

UNITED STATES  
DEPARTMENT OF THE INTERIOR

BUREAU OF LAND MANAGEMENT NT 2-039-25279

APPLICATION FOR PERMIT TO DRILL, DEEPEN, OR PLUG BACK

1a. TYPE OF WORK

DRILL ☒

DEEPEN ☐

PLUG BACK ☐

b. TYPE OF WELL

OIL  
WELL ☐

GAS  
WELL ☒

OTHER

SINGLE  
ZONE ☒

MULTIPLE  
ZONE ☐

2. NAME OF OPERATOR

Phillips Petroleum Company 17654

3. ADDRESS OF OPERATOR

5525 Hwy 64 NBU 3004, Farmington, NM 87401

4. LOCATION OF WELL (Report location clearly and in accordance with any State requirements.)\*

At surface Unit F, 1812' FNL & 1512' FWL

At proposed prod. zone Same as above

14. DISTANCE IN MILES AND DIRECTION FROM NEAREST TOWN OR POST OFFICE\*

25 Miles East From Blanco

10. DISTANCE FROM PROPOSED\*

LOCATION TO NEAREST  
PROPERTY OR LEASE LINE, FT.  
(Also to nearest drig. unit line, if any)

16. NO. OF ACRES IN LEASE

2560 Acres

17. NO. OF ACRES ASSIGNED  
TO THIS WELL

320/W/2

18. DISTANCE FROM PROPOSED LOCATION\*  
TO NEAREST WELL, DRILLING, COMPLETED,  
OR APPLIED FOR, ON THIS LEASE, FT.

19. PROPOSED DEPTH

8150'

20. ROTARY OR CABLE TOOLS

Rotary

21. ELEVATIONS (Show whether DF, RT, GR, etc.)

6415' (GL Unprepared)

22. APPROX. DATE WORK WILL START\*

Upon Approval

23. PROPOSED CASING AND CEMENTING PROGRAM

SIZE OF HOLE	SIZE OF CASING	WEIGHT PER FOOT	SETTING DEPTH	QUANTITY OF CEMENT
12-1/4"	9-5/8"	36#, J-55	400'	220 Sx, Circ to Surface
8-3/4"	7"	23#, J-55	3750'	500 Sx, Circ to Surface
6-1/4"	4-1/2"	11.6#, N-80	8150'	470 Sx, First Stage
				350 Sx, Second Stage, Circ to Surf

RECEIVED

JUN 28 1993

OIL CON. DIV.  
DIST. 3

IN ABOVE SPACE DESCRIBE PROPOSED PROGRAM: If proposal is to deepen or plug back, give data on present productive zone and proposed new productive zone. If proposal is to drill or deepen directionally, give pertinent data on subsurface locations and measured and true vertical depths. Give blowout preventer program, if any.

24.

SIGNED

L. E. Robinson

TITLE

Sr. Drlg. & Prod. Engr.

DATE

7-22-92

(This space for Federal or State office use)

PERMIT NO.

APPROVAL DATE

APPROVED BY

TITLE

CONDITIONS OF APPROVAL, IF ANY:

APPROVED  
AS AMENDED

JUN 25 1993

DISTRICT MANAGER

\*See Instructions On Reverse Side

NMOCD

Submit to Appropriate  
District Office  
State Lease - 4 copies  
Fee Lease - 3 copies

State of New Mexico  
Energy, Minerals and Natural Resources Department

Form C-102  
Revised 1-1-89

OIL CONSERVATION DIVISION

P.O. Box 2088  
Santa Fe, New Mexico 87504-2088

DISTRICT I  
P.O. Box 1980, Hobbs, NM 88240

DISTRICT II  
P.O. Drawer DD, Artesia, NM 88210

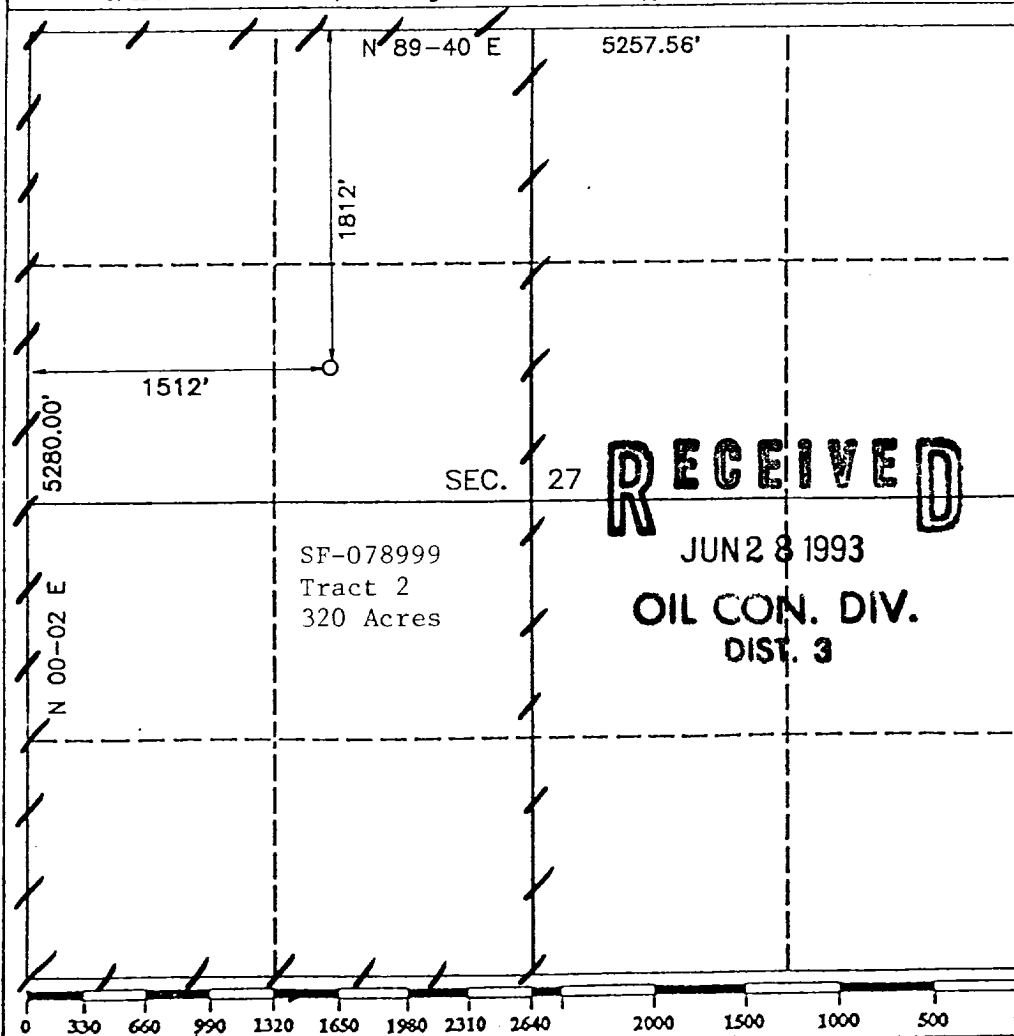
DISTRICT III  
1000 Rio Brazos Rd., Aztec, NM 87410

WELL LOCATION AND ACREAGE DEDICATION PLAT

All Distances must be from the outer boundaries of the section

Operator <b>PHILLIPS PETROLEUM</b>		Lease <b>SAN JUAN 31-6 UNIT</b>		Well No. <b>24E</b>
Unit Letter <b>F</b>	Section <b>27</b>	Township <b>T. 31 N.</b>	Range <b>R. 6 W.</b>	County <b>RIO ARRIBA</b>
Actual Footage Location of Well: <b>1812</b> feet from the <b>NORTH</b> line and <b>1512</b> feet from the <b>WEST</b> line				
Ground level Elev. <b>6415</b>	Producing Formation <b>Dakota</b>	Pool <b>Basin Dakota</b>	Dedicated Acreage: <b>320</b> Acres	

- Outline the acreage dedicated to the subject well by colored pencil or hatchure marks on the plat below.
- If more than one lease is dedicated to the well, outline each and identify the ownership thereof (both as to working interest and royalty).
- If more than one lease of different ownership is dedicated to the well, have the interest of all owners been consolidated by communitization, unitization, force-pooling, etc.?  
☒ Yes ☐ No If answer is "yes" type of consolidation Unitization  
If answer is "no" list the owners and tract descriptions which have actually been consolidated. (Use reverse side of this form if necessary.)  
No allowable will be assigned to the well until all interests have been consolidated (by communitization, unitization, forced-pooling, or otherwise) or until a non-standard unit, eliminating such interest, has been approved by the Division.



OPERATOR CERTIFICATION

I hereby certify that the information contained herein is true and complete to the best of my knowledge and belief.

Signature  
*L. E. Robinson*  
Printed Name  
**L. E. Robinson**  
Position  
**Sr. Drlg. & Prod. Engr.**  
Company  
**Phillips Petroleum Company**  
Date  
**7-22-92**

SURVEYOR CERTIFICATION

I hereby certify that the well location shown on this plat was plotted from field notes of actual surveys made by me or under my supervision, and that the same is true and correct to the best of my knowledge and belief.

Date Surveyed  
**APRIL 23 1992**  
Signature of Surveyor  
*ROBERT A. RUSH*  
Professional Surveyor  
**8894**  
Certificate No.  
**8894**

DEPARTMENT OF THE INTERIOR  
GEOLOGICAL SURVEY

San Juan 31-6 Unit

