

Submit to Appropriate  
District Office  
State Lease - 6 copies  
Fee Lease - 5 copies

DISTRICT I  
P.O. Box 1980, Hobbs, NM 88240

DISTRICT II  
P.O. Drawer DD, Artesia, NM 88210

DISTRICT III  
1000 Rio Brazos Rd., Aztec, NM 87410

State of New Mexico

Energy, Minerals and Natural Resources Department

Form C-101  
Revised 1-1-89

RECEIVED  
OIL CONSERVATION DIV.  
MAR 31 1994  
Santa Fe, New Mexico 87504-2088  
APR 12 1994  
OIL CON. DIV.  
DIST. 3

API NO. (assigned by OCD on New Wells)

30-139-25373 ✓

5. Indicate Type of Lease

STATE ☐

FEE ☒

6. State Oil & Gas Lease No.

APPLICATION FOR PERMIT TO DRILL, DEEPEN, OR PLUG BACK

1a. Type of Work:

DRILL ☒

RE-ENTER ☐

DEEPEN ☐

PLUG BACK ☐

b. Type of Well:

OIL  
WELL ☒

GAS  
WELL ☐

OTHER ☐

SINGLE  
ZONE ☒

MULTIPLE  
ZONE ☐

7. Lease Name or Unit Agreement Name

Caranta 2

8. Well No.

2-1

9. Pool name or Wildcat

96163

Wildcat; CHARACTERRA

4. Well Location

Unit Letter

D

870

Feet From The

North

Line and

545

Feet From The

West

Line

Section

2

Township

31N

Range

1W

NMPM

Rio Arriba

County

10. Proposed Depth

2500'

11. Formation

Niobrara

12. Rotary or C.T.

Rotary

13. Elevations (Show whether DF, RT, GR, etc.)

6900' Gr.

14. Kind & Status Plug. Bond

Blanket

15. Drilling Contractor

Undecided

16. Approx. Date Work will start

May 15, 1994

17. PROPOSED CASING AND CEMENT PROGRAM

SIZE OF HOLE	SIZE OF CASING	WEIGHT PER FOOT	SETTING DEPTH	SACKS OF CEMENT	EST. TOP
12-1/4"	9-7/8"	36#	550'	290 sx	Surface
8-3/4"	7-5/8"	26.4#	1675'	150 sx	Surface
6-3/4"	5-1/2" Liner	15.5#	2500'	Uncemented	TOT. 1575'

SUMMARY DRILLING PROGRAM

- 1) Drlg 12-1/4" hole to 550' through Mesa Verde. Run & cement 9-5/8" casing back to surface.
- 2) Drlg 8-3/4" hole to +1675' to top of Niobrara. Run & cement 7-5/8" casing to surface.
- 3) Air drilling 6-3/4" hole through Niobrara. Run slotted liner. Stimulate.

A 10", 3000# BOP will be in operation for all drilling below surface casing.

IN ABOVE SPACE DESCRIBE PROPOSED PROGRAM: IF PROPOSAL IS TO DEEPEN OR PLUG BACK, GIVE DATA ON PRESENT PRODUCTIVE ZONE AND PROPOSED NEW PRODUCTIVE ZONE. GIVE BLOWOUT PREVENTER PROGRAM, IF ANY.

I hereby certify that the information above is true and complete to the best of my knowledge and belief.

SIGNATURE

Wendy G. DesOrmeaux

TITLE

Regulatory Coordinator

DATE 3/30/94

TYPE OR PRINT NAME

Wendy G. DesOrmeaux

(713) 871-3482

TELEPHONE NO.

(This space for State Use)

APPROVED BY

Emilio Busch

TITLE

DEPUTY OIL & GAS INSPECTOR, DIST. #3

DATE

APR 12 1994

CONDITIONS OF APPROVAL, IF ANY:

Submit to Appropriate  
District Office  
State Lease - 4 copies  
Fee Lease - 3 copies

State of New Mexico  
Energy, Minerals and Natural Resources Department

Form C-102  
Revised 1-1-89

OIL CONSERVATION DIVISION

P.O. Box 2088  
Santa Fe, New Mexico 87504-2088

DISTRICT I  
P.O. Box 1980, Hobbs, NM 88240

DISTRICT II  
P.O. Drawer DD, Artesia, NM 88210

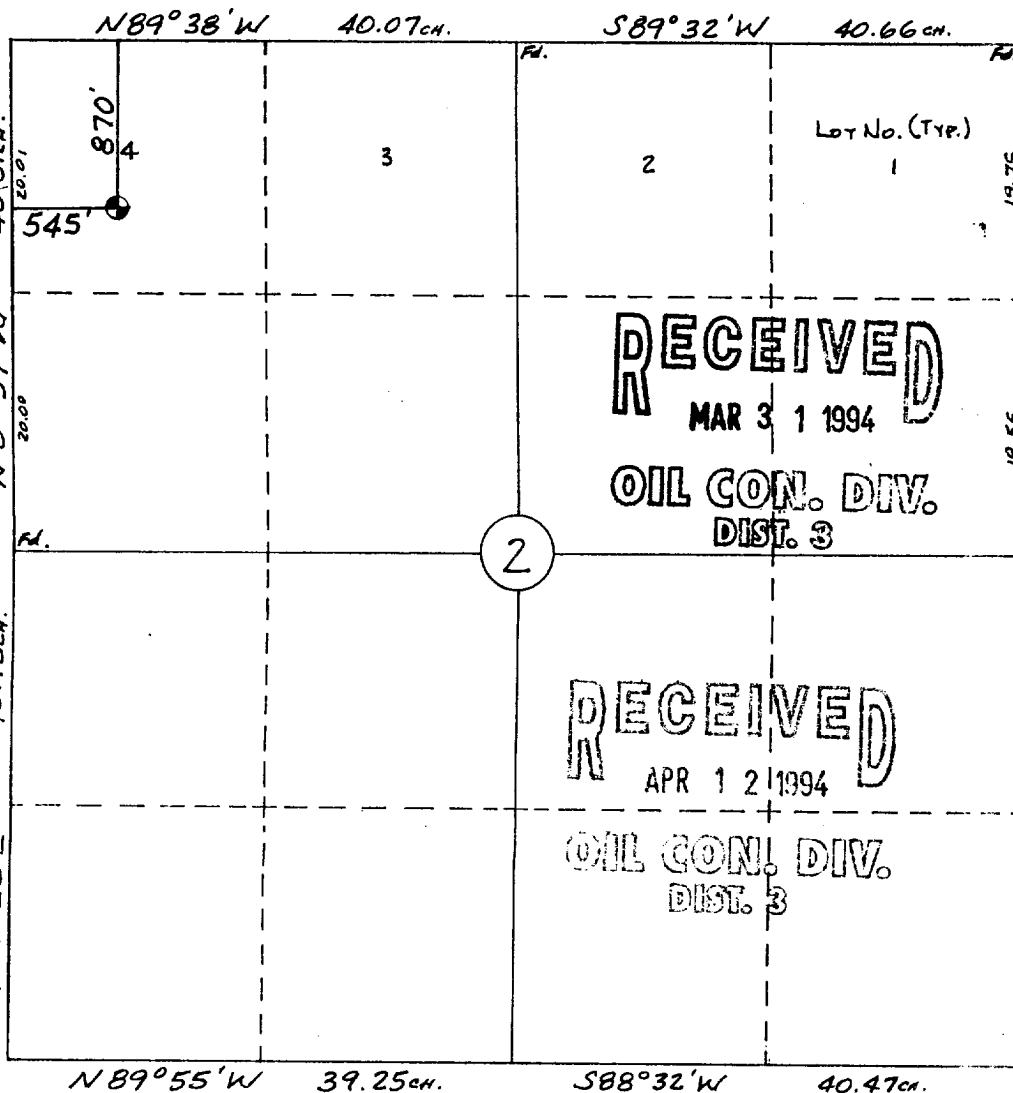
DISTRICT III  
1000 Rio Brazos Rd., Aztec, NM 87410

WELL LOCATION AND ACREAGE DEDICATION PLAT

All Distances must be from the outer boundaries of the section

Operator <b>COLUMBIA GAS DEVELOPMENT CORP.</b>		Lease <b>CARANTA 2</b>		Well No. <b>2-1</b>
Unit Letter <b>D</b>	Section <b>2</b>	Township <b>31 N</b>	Range <b>1 W</b>	County <b>Rio Arriba</b>
Actual Footage Location of Well: <b>870</b> feet from the <b>North</b> line and <b>545</b> feet from the <b>West</b> line				
Ground level Elev. <b>6900</b>	Producing Formation <b>Niobrara</b>	Pool <b>Wildcat; CHARRA-NIOBRARA</b>	Dedicated Acreage: <b>40.08</b> Acres	
<p>1. Outline the acreage dedicated to the subject well by colored pencil or hatchure marks on the plat below.</p> <p>2. If more than one lease is dedicated to the well, outline each and identify the ownership thereof (both as to working interest and royalty).</p> <p>3. If more than one lease of different ownership is dedicated to the well, have the interest of all owners been consolidated by communitization, unitization, force-pooling, etc.? <input type="checkbox"/> Yes <input type="checkbox"/> No If answer is "yes" type of consolidation _____</p> <p>If answer is "no" list the owners and tract descriptions which have actually been consolidated. (Use reverse side of this form if necessary.) _____</p> <p>No allowable will be assigned to the well until all interests have been consolidated (by communitization, unitization, forced-pooling, or otherwise) or until a non-standard unit, eliminating such interest, has been approved by the Division.</p>				

0 330 660 990 1320 1650 1980 2310 2640 2000 1500 1000 500 0



OPERATOR CERTIFICATION

I hereby certify that the information contained herein in true and complete to the best of my knowledge and belief.

Signature  
*Wendy G. DesOrmeaux*  
Printed Name  
**Wendy G. DesOrmeaux**  
Position  
**Regulatory Coordinator**  
Company  
**Columbia Gas Development**  
Date  
**3-30-94**

SURVEYOR CERTIFICATION

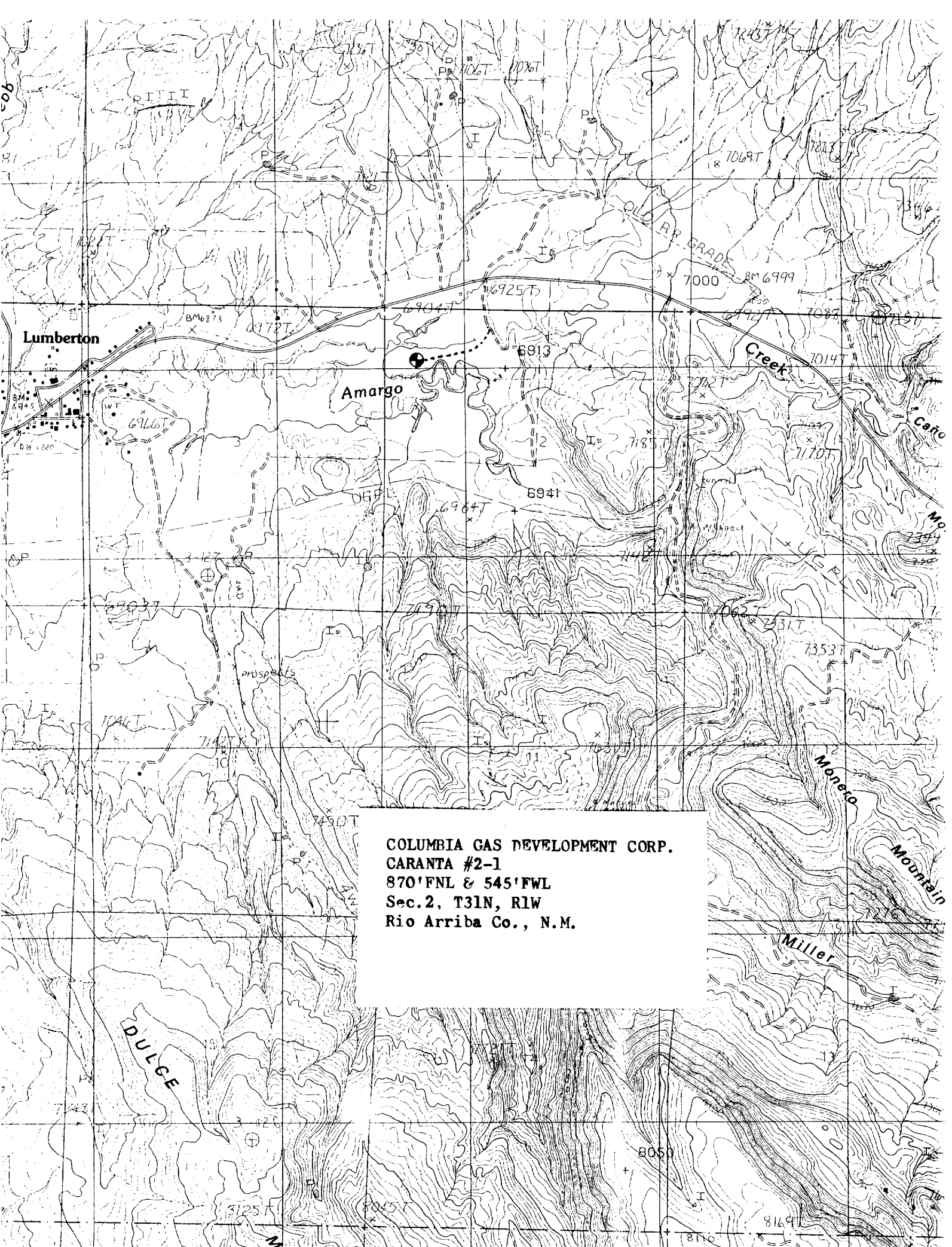
I hereby certify that the well location shown on this plat was plotted from field notes of actual surveys made by me or under my supervision, and that the same is true and correct to the best of my knowledge and belief.

11 Jan., 1994

Date Surveyed  
**William E. Mahnke II**

Signature  
*William E. Mahnke II*  
Professional Surveyor

**NEW MEXICO**  
**#8466**  
Certificate No. **8466**  
PROFESSIONAL LAND SURVEYOR



COLUMBIA GAS DEVELOPMENT CORP.  
CARANTA #2-1  
870'FNL & 545'FWL  
Sec.2, T31N, R1W  
Rio Arriba Co., N.M.