

UNITED STATES
DEPARTMENT OF THE INTERIOR
BUREAU OF LAND MANAGEMENT

SUBMIT IN TRIPLICATE*

(Other instructions on
reverse side)

BLM

FORM APPROVED
OMB NO. 1004-0136
Expires: February 28, 1995

APPLICATION FOR PERMIT TO DRILL OR DEEPEN

1a. TYPE OF WORK

DRILL ☒DEEPEN ☐

070 FARMINGTON, NM

b. TYPE OF WELL

OIL
WELL ☐GAS
WELL ☒

OTHER

SINGLE
ZONE ☒MULTIPLE
ZONE ☐

2. NAME OF OPERATOR

WILLIAMS PRODUCTION COMPANY

OGRID 120782

3. ADDRESS AND TELEPHONE NO.

c/o Walsh Engr. & Prod. Corp.

7415 E. Main Farmington, NM 87402

(505) 327-4892

4. LOCATION OF WELL (Report location clearly and in accordance with any State requirements.)

At surface

1695'FSL & 1840'FEL

At proposed prod. zone Same

14. DISTANCE IN MILES AND DIRECTION FROM NEAREST TOWN OR POST OFFICE*

25 miles NE of Blanco, New Mexico

10. DISTANCE FROM PROPOSED*
LOCATION TO NEAREST
PROPERTY OR LEASE LINE, FT.
(Also to nearest drlg. unit line, if any)

800'

16. NO. OF ACRES IN LEASE*

2460.23

17. NO. OF ACRES ASSIGNED
TO THIS WELL

320

18. DISTANCE FROM PROPOSED LOCATION*
TO NEAREST WELL, DRILLING, COMPLETED,
OR APPLIED FOR, ON THIS LEASE, FT.

2500'

19. PROPOSED DEPTH

6065'

20. ROTARY OR CABLE TOOLS

Rotary

21. ELEVATIONS (Show whether DF, RT, GR, etc.)

6331' GR

22. APPROX. DATE WORK WILL START*

May 1998

23.

PROPOSED CASING AND CEMENTING PROGRAM

SIZE OF HOLE	GRADE SIZE OF CASING	WEIGHT PER FOOT	SETTING DEPTH	QUANTITY OF CEMENT
12 1/4"	9 5/8"	36#	250	157 cuft Cl "B" w/3% CaCl2
8 3/4"	7"	20#	3580	597 cuft 65/35 Poz 187cuft Cl "B"
6 1/4"	4 1/2"	10.5#	3480 -6205	424 cuft Cl "B" w/4% gel & additives

WILLIAMS PRODUCTION COMPANY proposes to drill a vertical well to develop the Mesa Verde Formation at the above described site in accordance with the attached drilling and surface use programs.

This location has been archaeologically surveyed by Southwest Archaeological Services. Copies of the report will be submitted directly to your office.

This APD also is serving as an application to obtain BLM road and pipeline ROW. The location will be accessed by a new road which crosses NW/SE, NE/SE, E/2 NE of Section 15, where it joins an existing road that crosses the N/2 N/2 of Section 14, all of T31N, R6W, where it connects with the main Rosa Road. The Rosa Road continues SW 15 miles where it joins the Sims Mesa Highway. The pipeline route is described on Plat #4.

IN ABOVE SPACE DESCRIBE PROPOSED PROGRAM: If proposal is to deepen, give data on present productive zone and proposed new productive zone. If proposal is to drill or deepen directionally, give pertinent data on subsurface locations and measured and true vertical depths. Give blowout preventer program, if any.

24.

SIGNED

Paul C. Thompson

TITLE Paul C. Thompson, Agent

DATE 3/10/98

(This space for Federal or State office use)

PERMIT NO.

APPROVAL DATE

Application approval does not warrant or certify that the applicant holds legal or equitable title to those rights in the subject lease which would entitle the applicant to conduct operations thereon.

CONDITIONS OF APPROVAL, IF ANY:

APPROVED BY

Chavada

TITLE

Geologist

DATE

6/24/98

*See Instructions On Reverse Side

District I
PO Box 1980, Hobbs, NM 88241-1980

District II
PO Drawer DD, Artesia, NM 88211-0719

District III
1000 Rio Brazos Rd., Aztec, NM 87410

District IV
PO Box 2088, Santa Fe, NM 87504-2088

State of New Mexico
Energy, Minerals & Natural Resources Department

OIL CONSERVATION DIVISION
PO Box 2088
Santa Fe, NM 87504-2088

Form C-102
Revised February 21, 1994
Instructions on back
Submit to Appropriate District Office
State Lease - 4 Copies
Fee Lease - 3 Copies

3567
BLM
MAR 12 PM 1:31
AMENDED REPORT

070 FATHINGTON, NM

WELL LOCATION AND ACREAGE DEDICATION PLAT

*API Number 30-039-25900	*Pool Code 72319	*Pool Name Blanco Mesa Verde
*Property Code 008480 17033	*Property Name ROSA UNIT	*Well Number 12A
*OGRID No. 120782	*Operator Name WILLIAMS PRODUCTION COMPANY	*Elevation 6331'

10 Surface Location

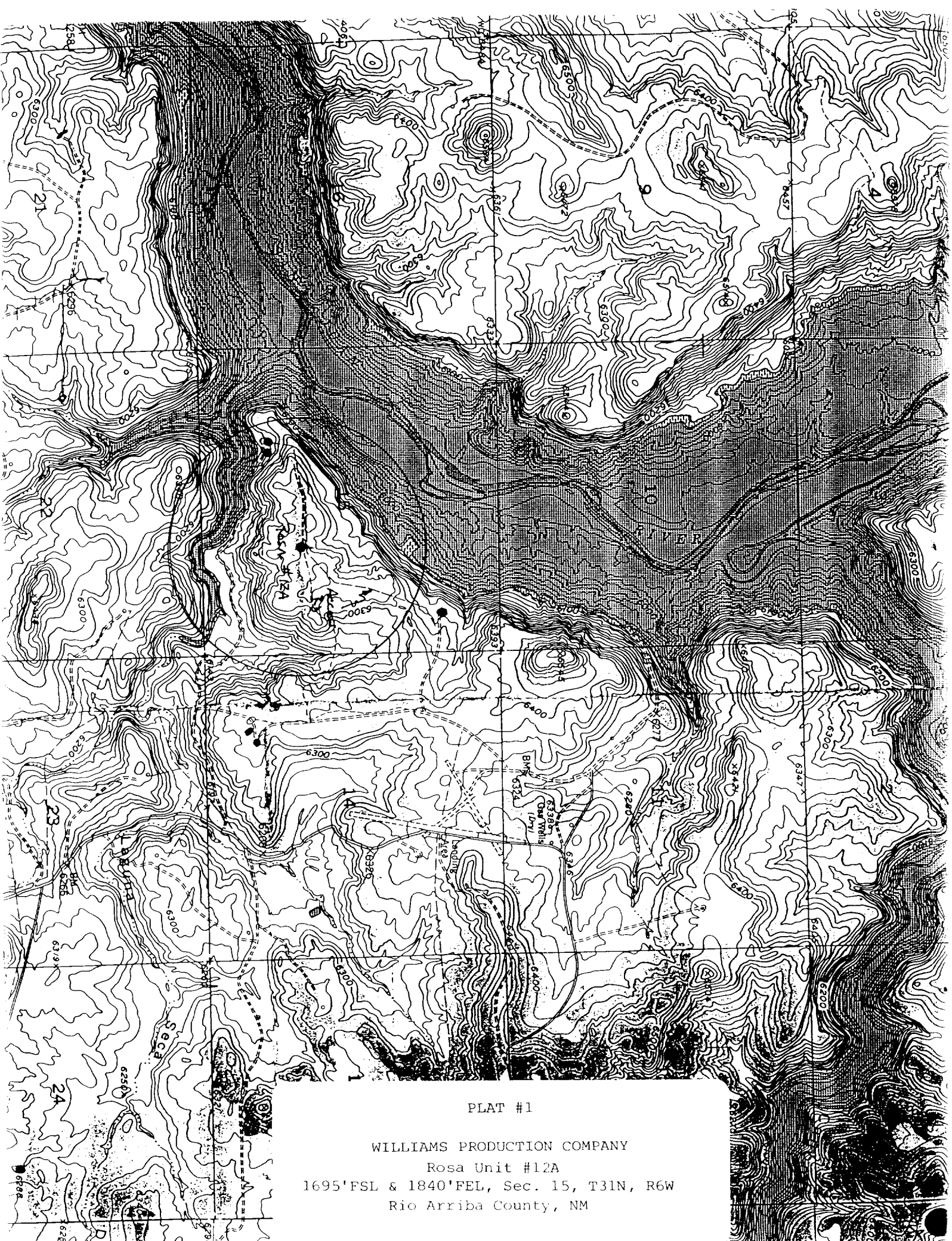
UL or lot no. J	Section 15	Township 31N	Range 6W	Lot Idn	Feet from the 1695'	North/South line SOUTH	Feet from the 1840'	East/West line EAST	County RIO ARriba
--------------------	---------------	-----------------	-------------	---------	------------------------	---------------------------	------------------------	------------------------	----------------------

11 Bottom Hole Location If Different From Surface

UL or lot no.	Section	Township	Range	Lot Idn	Feet from the	North/South line	Feet from the	East/West line	County
12 Dedicated Acres 320		13 Joint or Infill I		14 Consolidation Code U		15 Order No.			

NO ALLOWABLE WILL BE ASSIGNED TO THIS COMPLETION UNTIL ALL INTERESTS HAVE BEEN CONSOLIDATED OR A NON-STANDARD UNIT HAS BEEN APPROVED BY THE DIVISION

15	5253.60'	17 OPERATOR CERTIFICATION I hereby certify that the information contained herein is true and complete to the best of my knowledge and belief Paul C. Thompson Signature Paul C. Thompson Printed Name Agent Title Date
5280.00'	15	18 SURVEYOR CERTIFICATION I hereby certify that the well location shown on this plat was plotted from field notes of actual surveys made by me or under my supervision, and that the same is true and correct to the best of my belief. FEBRUARY 23 1998 Date of Survey Signature of Registered Professional Surveyor NEW MEXICO 6857 REGISTERED PROFESSIONAL SURVEYOR Certificate Number
5280.00'	1695'	
	1840'	
	5258.88'	



PLAT #1

WILLIAMS PRODUCTION COMPANY

Rosa Unit #12A

1695'FSL & 1840'FEL, Sec. 15, T31N, R6W

Rio Arriba County, NM