

District I
1625 N. French Dr., Hobbs, NM 88240
District II
811 South First, Artesia, NM 88210
District III
1000 Rio Brazos Road, Aztec, NM 87410
District IV
2040 South Pacheco, Santa Fe, NM 87505

State of New Mexico
Energy Minerals and Natural Resources
Oil Conservation Division
2040 South Pacheco
Santa Fe, NM 87505

Form C-107
Revised March 17, 1999

Filing Instructions
At Bottom of Page

APPLICATION FOR MULTIPLE COMPLETION

WILLIAMS PRODUCTION COMPANY		PO BOX 3102, MS 37-2		TULSA, OK 74101	
Operator		Address			
ROSA UNIT	12A	J	15	31N	6W
Lease	Well No.	Unit Ltr.	- Sec	- Twp	- Rge
					RIO ARRIBA
					County

All applicants for multiple completion must complete Items 1 and 2 below.

1. The following facts are submitted:	Upper Zone	Intermediate Zone	Lower Zone
a. Name of Pool and Formation	ROSA PICTURED CLIFFS		BLANCO MV
b. Top and Bottom of Pay Section (Perforations)	3195' - 3290'		4436' - 5955'
c. Type of production (Oil or Gas)	GAS		GAS
d. Method of Production (Flowing or Artificial Lift)	FLOWING		FLOWING
e. Daily Production <input type="checkbox"/> Actual <input checked="" type="checkbox"/> Estimated Oil Bbls. Gas MCF Water Bbls.	100 MCFD		200 MCFD

RECEIVED
JUL 16 1999
OIL CON. DIV.
DIST. 3

2. The following must be attached:

- Diagrammatic Sketch of the Multiple Completion, showing all casing strings, including diameters and setting depths, centralizers and/or turbolizers and location thereof, quantities used and top of cement, perforated intervals, tubing strings, including diameters and setting depth, location and type of packers and side door chokes, and such other information as may be pertinent.
- Plat showing the location of all wells on applicant's lease, all offset wells on offset leases, and the names and addresses of operators of all leases offsetting applicant's lease.
- Electrical log of the well or other acceptable log with tops and bottoms of producing zones and intervals of perforation indicated thereon. (If such log is not available at the time application is filed it shall be submitted as provided by Rule 112-A.)

OPERATOR:

I hereby certify above information is true and complete to best of my knowledge, and belief.

Signature

Tracy Ross

Printed Name & Title: Tracy Ross, Production Analyst

Date: JULY 14, 1999

Telephone: (918) 573-6254

OIL CONSERVATION DIVISION

Approved by

27.8
SUPERVISOR DISTRICT #3

Title

Date

JUL 16 1999

NOTE: If the proposed multiple completion will result in an unorthodox well location and/or a non-standard proration unit in one or more of the producing zones, then separate application for approval of the same should be filed simultaneously with this application.

FILING INSTRUCTIONS:

- District Approval -- See rule 112-A-B -- Submit 4 copies of Form C-107 with attachments to appropriate district office.
- Division Director Administrative Approval -- See Rule 112-C -- Submit 2 copies of Form C-107 with attachments to Division office in Santa Fe and 2 copies of Form C-107 with attachments to appropriate district office.
- Multiple completions not qualifying for District or Division Director approval may be set for hearing as outlined in Rule 112-A-E.

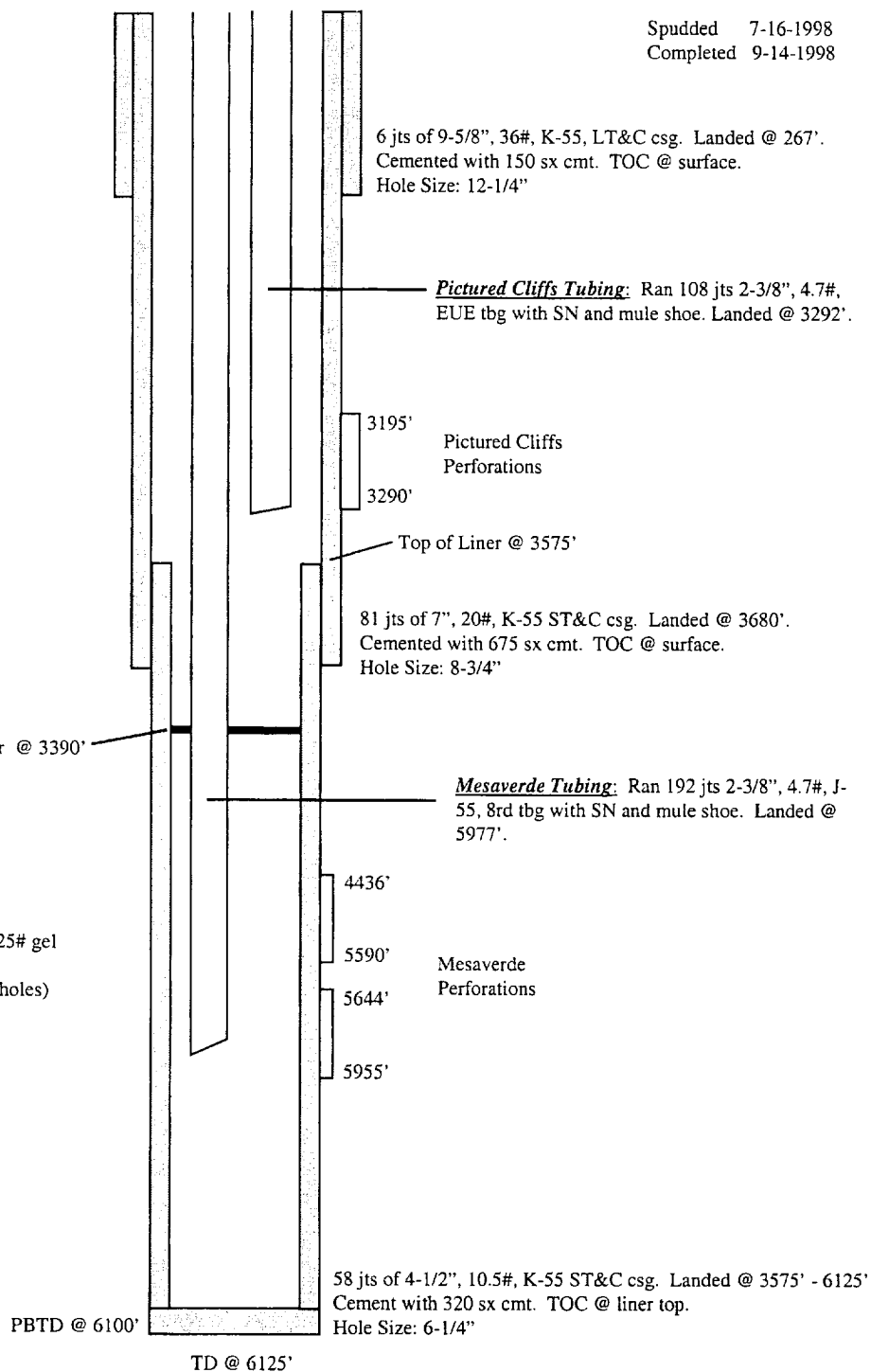
ROSA UNIT #12A *BLANCO PC/MV*

Location: 1695' FSL, 1840' FEL
NW/4 SE/4 Section 15, T31N, R6W
Rio Arriba Co., NM

Elevation: 6331' GR
KB = 12'

Spudded 7-16-1998
Completed 9-14-1998

<i>Tops</i>	<i>Depth</i>
Ojo Alamo	2380'
Fruitland	2983'
Pictured Cliffs	3168'
Lewis	3540'
Cliff House	5364'
Menefee	5410'
Point Lookout	5642'
Mancos	6090'



STIMULATION

Pictured Cliffs 3195' - 3290' (20 holes)
101,108# of 20/40 sand in 70 Quality foam in 25# gel

Lewis/CliffHouse/Menefee 4436' - 5590' (38 holes)
80,000# of 20/40 sand in 2160 bbls slick water

Point Lookout 5644' - 5955' (40 holes)
80,000# of 20/40 sand in 2240 bbls slick water

District I
PO Box 1980, Hobbs, NM 88241-1980

District II
PO Drawer DD, Artesia, NM 88211-0719

District III
1000 Rio Brazos Rd., Aztec, NM 87410

District IV
PO Box 2088, Santa Fe, NM 87504-2088

State of New Mexico
Energy, Minerals & Natural Resources Department

OIL CONSERVATION DIVISION
PO Box 2088
Santa Fe, NM 87504-2088

Form C-102
Revised February 21, 1994
Instructions on back
Submit to Appropriate District Office
State Lease - 4 Copies
Fee Lease - 3 Copies

☐ AMENDED REPORT

WELL LOCATION AND ACREAGE DEDICATION PLAT

*API Number 30-039-25900		*Pool Code 96175	*Pool Name ROSA PICTURED CLIFFS	
*Property Code 008480	*Property Name ROSA UNIT			*Well Number 12A
*OGRID No. 120782	*Operator Name WILLIAMS PRODUCTION COMPANY			*Elevation 6331'

¹⁰ Surface Location

U. or lot no. J	Section 15	Township 31N	Range 6W	Lot Idn	Feet from the 1695'	North/South line SOUTH	Feet from the 1840'	East/West line EAST	County RIO ARriba
--------------------	---------------	-----------------	-------------	---------	------------------------	---------------------------	------------------------	------------------------	----------------------

¹¹ Bottom Hole Location If Different From Surface

U. or lot no.	Section	Township	Range	Lot Idn	Feet from the	North/South line	Feet from the	East/West line	County
*Dedicated Acres 320		*Joint or Infill I		*Consolidation Code U		*Order No.			

NO ALLOWABLE WILL BE ASSIGNED TO THIS COMPLETION UNTIL ALL INTERESTS HAVE BEEN CONSOLIDATED
OR A NON-STANDARD UNIT HAS BEEN APPROVED BY THE DIVISION

15	5253.60'	5280.00'	15	5280.00'	1840'	1695'	5258.88'	¹⁷ OPERATOR CERTIFICATION	
								I hereby certify that the information contained herein is true and complete to the best of my knowledge and belief.	
								Signature <i>Paul C. Thompson</i>	
								Printed Name Paul C. Thompson	
								Agent	
								Title	
								Date	
								¹⁸ SURVEYOR CERTIFICATION	
								I hereby certify that the well location shown on this plat was plotted from field notes of actual surveys made by me or under my supervision, and that the same is true and correct to the best of my belief.	
								FEBRUARY 23 1998	
								Date of Survey	
								Signature <i>NEALE C. EDWARDS</i>	
								6857	
								REGISTERED PROFESSIONAL SURVEYOR	
								Certificate Number	