

SUBMIT IN TRIPLICATE\*  
(Other instructions on  
reverse side)

Form approved.  
Budget Bureau No. 1004-0136  
Expires December 31, 1991

**UNITED STATES  
DEPARTMENT OF THE INTERIOR  
BUREAU OF LAND MANAGEMENT**

**APPLICATION FOR PERMIT TO DRILL, DEEPEN, OR PLUG BACK**

5. LEASE DESIGNATION AND SERIAL NO. <b>SF- 078772</b>
6. IF INDIAN, ALLOTTEE OR TRIBE NAME
7. UNIT AGREEMENT NAME <b>Rosa Unit</b>
8. FARM OR LEASE NAME <b>API # 30-039-26080</b>
9. WELL NO. <b>164A</b>
10. FIELD AND POOL OR WILDCAT <b>Blanco Mesa Verde</b>
11. SEC., T., R., M., OR BLK. AND SURVEY OR AREA <b>J Sec. 1, T31N, R6W</b>
12. COUNTY OR PARISH <b>Rio Arriba</b>
13. STATE <b>NM</b>
14. DISTANCE IN MILES AND DIRECTION FROM NEAREST TOWN OR POST OFFICE* <b>28 miles NE of Blanco, NM</b>
15. DISTANCE FROM PROPOSED* LOCATION TO NEAREST PROPERTY OR LEASE LINE, FT. (Also to nearest drlg. unit line, if any) <b>1190'</b>
16. NO. OF ACRES IN LEASE <b>2561.86</b>
17. NO. OF ACRES ASSIGNED TO THIS WELL <b>303.88 ALL</b>
18. DISTANCE FROM PROPOSED LOCATION* TO NEAREST WELL, DRILLING, COMPLETED, OR APPLIED FOR ON THIS LEASE, FT. <b>700'</b>
19. PROPOSED DEPTH <b>6060'</b>
20. ROTARY OR CABLE TOOLS <b>Rotary</b>
21. ELEVATIONS (Show whether DF, RT, GR, etc.) <b>6312' GR</b>
22. APPROX. DATE WORK WILL START* <b>April 1999</b>

1a. TYPE OF WORK **DRILL** ☒ **DEEPEN** ☐

1b. TYPE OF WELL  
OIL WELL ☐ GAS WELL ☒ OTHER ☐ SINGLE ZONE ☒ MULTIPLE ZONE ☐

2. NAME OF OPERATOR  
**Williams Production Company**

3. ADDRESS OF OPERATOR  
**c/o Walsh Engineering 7415 E. Main St., Farmington, NM 87402 (505) 327-4892**

4. LOCATION OF WELL (Report location clearly and in accordance with any State requirements\*)  
At Surface **1480' FSL and 1190' FEL**  
At proposed Prod. Zone

14. DISTANCE IN MILES AND DIRECTION FROM NEAREST TOWN OR POST OFFICE\*  
**28 miles NE of Blanco, NM**

15. DISTANCE FROM PROPOSED\* LOCATION TO NEAREST PROPERTY OR LEASE LINE, FT. (Also to nearest drlg. unit line, if any)  
**1190'**

18. DISTANCE FROM PROPOSED LOCATION\* TO NEAREST WELL, DRILLING, COMPLETED, OR APPLIED FOR ON THIS LEASE, FT.  
**700'**

21. ELEVATIONS (Show whether DF, RT, GR, etc.)  
**6312' GR**

23. PROPOSED CASING AND CEMENTING PROGRAM				
SIZE OF HOLE	SIZE OF CASING	WEIGHT/FOOT	SETTING DEPTH	QUANTITY OF CEMENT
12-1/4"	9-5/8"	36#	500'	313 cu.ft. Cl "H" with 2% CaCl <sub>2</sub>
8-3/4"	7"	20#	3605'	849cu.ft. 65/35 poz & 205cu.ft. 50/50 poz
6-1/4"	4-1/2"	10.5#	3505' - 6060'	111cu.ft. 50/50 poz & 335cu.ft. 50/50 poz

This action is subject to technical and procedural review pursuant to 43 CFR 3165.3 and appeal pursuant to 43 CFR 3165.4.

*Williams Production Company proposes to drill a vertical well to develop the Mesa Verde formation at the above described location in accordance with the attached drilling and surface use plans.*

*This location has been archaeologically surveyed by Moore Anthropological Research. Copies of their report have been submitted directly to your office.*

*This APD also is serving as an application to obtain BLM road and pipeline right-of-ways. This well will be accessed by a new access road which will be 300' long and 20' wide. It will cross the E2NE of Sec. 26, T31N, R6W where it joins the main Rosa Road. The Rosa Road continues SE for 12 miles where it joins the Sims Mesa Highway.*

IN ABOVE SPACE DESCRIBE PROPOSED PROGRAM : If proposal is to deepen or plug back, give data on present productive zone and proposed new productive zone. If proposal is to drill or deepen directionally, give pertinent data on subsurface locations and measured and true vertical depth. Give blowout preventer program, if any.

24. SIGNED Paul C. Thompson TITLE Paul C. Thompson, Ager DATE 1/19/99

(This space for Federal or State office use)

PERMIT NO. \_\_\_\_\_ APPROVAL DATE \_\_\_\_\_

Application approval does not warrant or certify that the applicant holds legal or equitable title to those rights in the subject lease which would entitle the applicant to conduct operations thereon.

CONDITIONS OF APPROVAL, IF ANY:

APPROVED BY Chip Haraden TITLE Acting Team Lead DATE 4/9/99

**\*See Instructions On Reverse Side**

Title 18 U.S.C. Section 1001, makes it a crime for any person knowingly and willfully to make to any department or agency of the United States any false, fictitious or fraudulent statements or representations as to any matter within its jurisdiction.

HOLD C104 FOR NSEP

**NMOCD**

District I  
PO Box 1980, Hobbs, NM 88241-1980

District II  
PO Drawer DD, Artesia, NM 88211-0719

District III  
1000 Rio Brazos Rd., Aztec, NM 87410

District IV  
PO Box 2088, Santa Fe, NM 87504-2088

State of New Mexico  
Energy, Minerals & Natural Resources Dept

Form C-102  
Revised February 21, 1994

Submit to Appropriate District Office  
State Lease - 4 Copies  
Fee Lease - 3 Copies

OIL CONSERVATION DIVISION  
PO Box 2088  
Santa Fe, NM 87504-2088

99 JUN 25 PM 1:21

☐ AMENDED REPORT

WELL LOCATION AND ACREAGE DEDICATION PLAT

*API Number 30-039-26080		*Pool Code 72319	*Pool Name Blanco Mesa Verde
*Property Code 008480	*Property Name ROSA UNIT		*Well Number 164A
*OGRID No. 120782	*Operator Name WILLIAMS PRODUCTION COMPANY		*Elevation 6312'

<sup>10</sup> Surface Location

UL or lot no. J	Section 1	Township 31N	Range 6W	Lot Idn	Feet from the 1480	North/South line South	Feet from the 1190	East/West line East	County RIO ARriba
--------------------	--------------	-----------------	-------------	---------	-----------------------	---------------------------	-----------------------	------------------------	----------------------

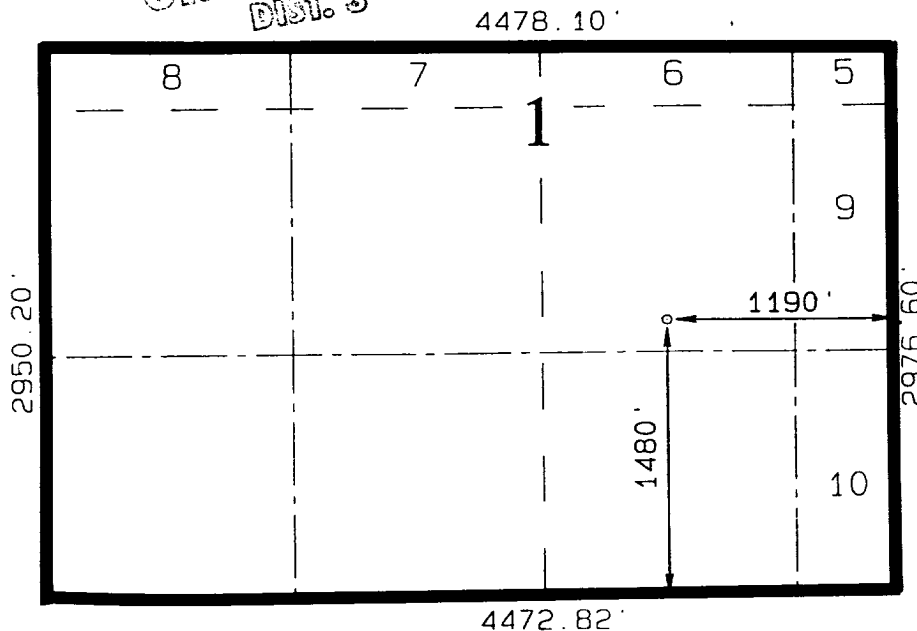
<sup>11</sup> Bottom Hole Location If Different From Surface

UL or lot no.	Section	Township	Range	Lot Idn	Feet from the	North/South line	Feet from the	East/West line	County
<sup>12</sup> Dedicated Acres 303.88		<sup>13</sup> Joint or Infill I		<sup>14</sup> Consolidation Code U		<sup>15</sup> Order No.			

NO ALLOWABLE WILL BE ASSIGNED TO THIS COMPLETION UNTIL ALL INTERESTS HAVE BEEN CONSOLIDATED  
OR A NON-STANDARD UNIT HAS BEEN APPROVED BY THE DIVISION

16

APR 12 1999  
OIL CON. DIV.  
DIST. 3



<sup>17</sup> OPERATOR CERTIFICATION

I hereby certify that the information contained herein is true and complete to the best of my knowledge and belief

*Paul C. Thompson*  
Signature

Paul C. Thompson  
Printed Name  
Agent

Title  
1/21/99

Date

<sup>18</sup> SURVEYOR CERTIFICATION

I hereby certify that the well location shown on this plat was plotted from field notes of actual surveys made by me or under my supervision, and that the same is true and correct to the best of my belief.

NOVEMBER 21 1997  
Date of Survey

Signature and Seal of Professional Surveyor

NEALE C. EDWARDS  
NEW MEXICO  
6857  
REGISTERED PROFESSIONAL SURVEYOR  
Certificate Number

