



**NEW MEXICO ENERGY, MINERALS
& NATURAL RESOURCES DEPARTMENT**

OIL CONSERVATION DIVISION
2040 South Pacheco Street
Santa Fe, New Mexico 87505
(505) 827-7131

August 4, 1999

RECEIVED
AUG 09 1999

OIL CON. DIV.
DIST. 3

**Williams Production Company
c/o Walsh Engineering & Production Corporation
7415 East Main
Farmington, New Mexico 87402
Attention: Paul C. Thompson**

Rosa Unit 162A

Administrative Order NSP-1805

Dear Mr. Thompson:

Reference is made to the following: (i) your application dated July 26, 1999 on behalf of the operator, Williams Production Company ("Williams"); and (ii) the records of the New Mexico Oil Conservation Division in Santa Fe ("Division"): all concerning Williams' request for the formation of a non-standard 232.79-acre gas spacing and proration unit (being 73% the size of a regular 320-acre unit for this pool) consisting of the following acreage in the Blanco-Mesaverde Pool:

**RIO ARRIBA COUNTY, NEW MEXICO
TOWNSHIP 31 NORTH, RANGE 5 WEST, NMPM
Irregular Section 30: Lots 3 and 4 and the SE/4 (S/2 equivalent).**

Gas production from this pool is to be dedicated to Williams' proposed: (i) Rosa Unit Well No. 162 (API No. 30-039-26069) to be drilled at a standard gas well location 1850 feet from the South line and 790 feet from the West line (Lot 3/Unit K) of Section 30; and, (ii) Rosa Unit Well No. 162-A (API No. 30-039-26122) to be drilled as the initial infill well at a standard gas well location 1850 feet from the South line and 1610 feet from the East line (Unit J) of Section 30.

The application has been duly filed under the provisions of Division Rules 605.B and 104.D(2).

By the authority granted me under the provisions of Division Rule 104.D(2)(b), the above-described 232.79-acre non-standard gas spacing and proration unit in the Blanco-Mesaverde Pool is hereby approved.

Further, both of the aforementioned Rosa Unit Well Nos. 162 and 162-A and above-described 232.79-acre non-standard gas spacing unit will be subject to all existing rules, regulations, policies, and procedures applicable to prorated gas pools in Northwest, New Mexico.

Sincerely,

Lori Wrotenbery

Lori Wrotenbery
Director

LW/MES/kv

cc: New Mexico Oil Conservation Division - Aztec
U. S. Bureau of Land Management - Farmington

**WALSH**

ENGINEERING & PRODUCTION CORP.

Petroleum Engineering Consulting
Lease Management
Contract Pumping7415 East Main
Farmington, New Mexico 87402
(505) 327-4892

July 26, 1999

Ms. Lori Wrotenbery
New Mexico Oil Conservation Division
2040 S. Pacheco
Santa Fe, NM 87505

Re: Non-Standard Gas Unit
Williams Production Company
Rosa Unit #162A
1850' FSL, 1610' FEL
Section 30, T31N R5W
Rio Arriba, NM
Blanco Mesa Verde

Dear Ms. Wrotenbery,

This is a request on behalf of Williams Production Company for administrative approval for a non-standard gas unit in the Blanco Mesa Verde pool for the referenced well. The proposed spacing unit is the southeast quarter and lots 3 and 4 of Section 30, T31N, R5W, which is 232.79 acres due to a variation in the legal subdivision of the U.S. Public Land Surveys.

As the Unit Operator of the Rosa Unit, Williams Production is the offset operator in all directions except to the southwest (Section 36, T31N, R6W) where Phillips petroleum is the operator of the San Juan 31-6 Unit. A waiver from Phillips is attached.

Attached is a map showing the offset ownership and a plat indicating the well location and proposed spacing unit.

Thank you for your consideration and approval of this application. If you have any questions please do not hesitate to call upon me.

Sincerely,

Paul C. Thompson, P.E.
President, Walsh Engineering

cc: David Spitz, WPC
NMOCD Aztec NM
BLM Farmington NM

RECEIVED
JUL 28 1999
NMOCD DIV.
DIST. 3

District II
PO Drawer 00, Artesia, NM 88211-0719

District III
1000 Rio Brazos Rd., Aztec, NM 87410

OIL CONSERVATION DIVISION
PO Box 2088
Santa Fe, NM 87504-2088

District IV
PO Box 2088, Santa Fe, NM 87504-2088

☐ AMENDED REPORT

WELL LOCATION AND ACREAGE DEDICATION PLAT

API Number		Pool Code	Pool Name	
		72319	Blanco Mesa Verde	
Property Code	Property Name			Well Number
008480	ROSA UNIT			162A
OGRID No.	Operator Name			Elevation
120782	WILLIAMS PRODUCTION COMPANY			6394

¹⁰ Surface Location

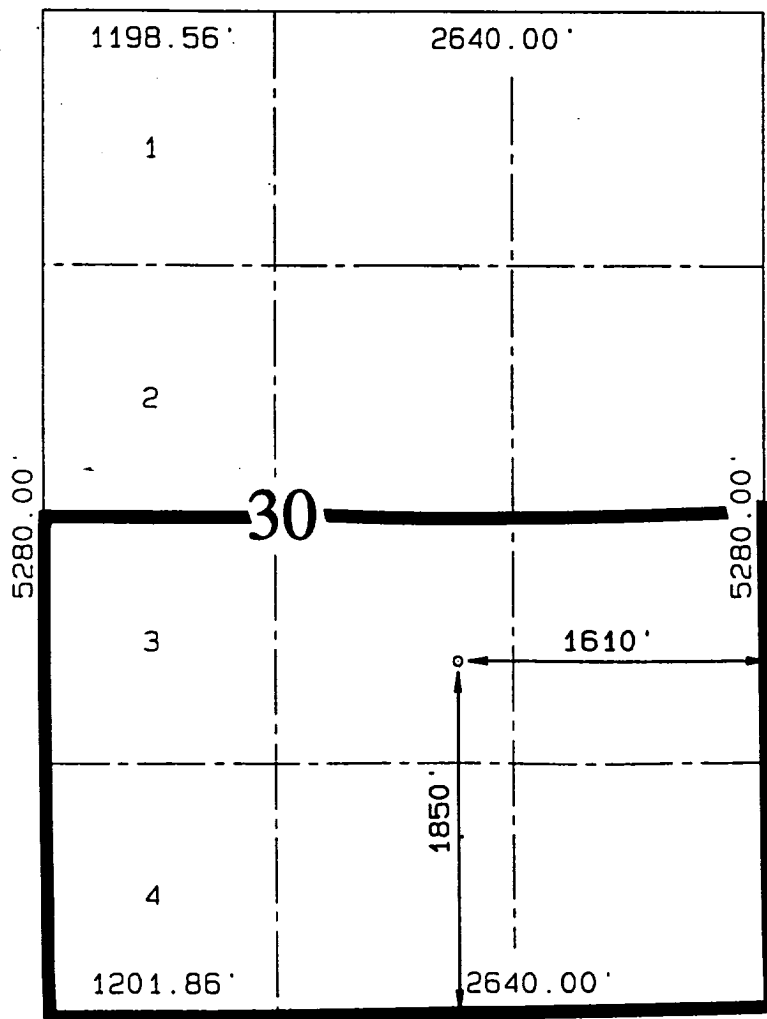
UL or lot no.	Section	Township	Range	Lot Idn	Feet from the	North/South line	Feet from the	East/West line	County
J	30	31N	5W		1850	SOUTH	1610	EAST	RIO ARRIBA

¹¹Bottom Hole Location If Different From Surface

UL or lot no.	Section	Township	Range	Lot Idn	Feet from the	North/South line	Feet from the	East/West line	County
---------------	---------	----------	-------	---------	---------------	------------------	---------------	----------------	--------

¹² Dedicated Acres	¹³ Joint or Infill	¹⁴ Consolidation Code	¹⁵ Order No.
232.79	I	U	

NO ALLOWABLE WILL BE ASSIGNED TO THIS COMPLETION UNTIL ALL INTERESTS HAVE BEEN CONSOLIDATED
OR A NON-STANDARD UNIT HAS BEEN APPROVED BY THE DIVISION



¹⁷ OPERATOR CERTIFICATION

I hereby certify that the information contained herein is true and complete to the best of my knowledge and belief.

Paul C. Thompson
Signature

Paul C. Thompson

Printed Name

Agent

Title

2/11/99

Date _____

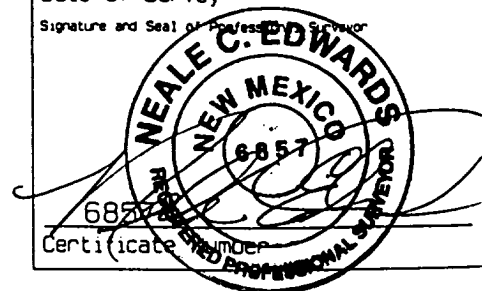
¹⁸ SURVEYOR CERTIFICATION

I hereby certify that the well location shown on this plat was plotted from field notes of actual surveys made by me or under my supervision, and that the same is true and correct to the best of my belief.

MARCH 26. 1998

Date of Survey

Signature and Seal of Professional Supervisor



WILLIAMS PRODUCTION COMPANY
NONSTANDARD PRORATION UNIT APPLICATION

<p align="center">ROSA UNIT</p> <p align="center">24</p>	<p align="center">ROSA UNIT</p> <p align="center">19</p>	<p align="center">ROSA UNIT</p> <p align="center">20</p>
<p align="center">WILLIAMS</p>	<p align="center">WILLIAMS</p>	<p align="center">WILLIAMS</p>
<p align="center">ROSA UNIT</p> <p align="center">25</p>	<p align="center">ROSA UNIT</p> <p align="center">30</p> <p>Rosa Unit #162 #162A x x</p>	<p align="center">ROSA UNIT</p> <p align="center">29</p>
<p align="center">WILLIAMS</p>	<p align="center">WILLIAMS</p>	<p align="center">WILLIAMS</p>
<p align="center">SAN JUAN 31-6 UNIT</p> <p align="center">36</p>	<p align="center">ROSA UNIT</p> <p align="center">31</p>	<p align="center">ROSA UNIT</p> <p align="center">32</p>
<p align="center">PHILLIPS PETROLEUM</p>	<p align="center">WILLIAMS</p>	<p align="center">WILLIAMS</p>
<p>T31N T30N</p>		
	<p align="center">R5W R6W</p>	

**WALSH**

ENGINEERING & PRODUCTION CORP.

Petroleum Engineering Consulting
Lease Management
Contract Pumping7415 East Main
Farmington, New Mexico 87402
(505) 327-4892

July 26, 1999

Phillips Petroleum Company
5525 Highway 64
Farmington, NM 87401Re: Williams Production Company
Non-standard Proration Unit Application
Rosa Unit #162 and #162A
Section 30, T31N, R5W
Rio Arriba Co., NM

Land Manager,

Williams Production Company has applied to the New Mexico Oil and Gas Conservation Division for administrative approval for a non-standard proration unit in the Blanco Mesa Verde pool for the referenced wells. Section 30 is not a full 640 acres due to a variation in the legal subdivision of the U. S. Public Land Surveys.

As an offset operator (Section 36, T31N, R6W) you are being notified of this application pursuant to NMOCD rules. If you object to this application, please notify the NMOCD within 20 days of receipt of this letter. If you don't object to this application, Williams would appreciate your signing the waiver below.

Sincerely,

Paul C. Thompson, PE

Phillips Petroleum has no objection to Williams Production Company's application for a non-standard proration unit for Section 30, T31N, R5W.

By:

PHILLIPS PETROLEUM COMPANY

Date: 7/27/99