

District III
1000 Rio Brazos Rd., Aztec, NM 87410

District IV
PO Box 2088, Santa Fe, NM 87504-2088

OIL CONSERVATION DIVISION
PO Box 2088
Santa Fe, NM 87504-2088

State Lease - 4 Copies
Fee Lease - 3 Copies

☒ AMENDED REPORT

WELL LOCATION AND ACREAGE DEDICATION PLAT

API Number 30-039-26130		Pool Code 72319	Pool Name Blanco Mesa Verde
Property Code	Property Name ROSA UNIT CCM		Well Number 169
GRID No. 120782	Operator Name WILLIAMS PRODUCTION COMPANY		Elevation 6358'

¹⁰ Surface Location

UL or lot no.	Section	Township	Range	Lot Ion	Feet from the	North/South line	Feet from the	East/West line	County
J	3	31N	6W		2460	SOUTH	1695	EAST	RIO ARriba

¹¹ Bottom Hole Location If Different From Surface

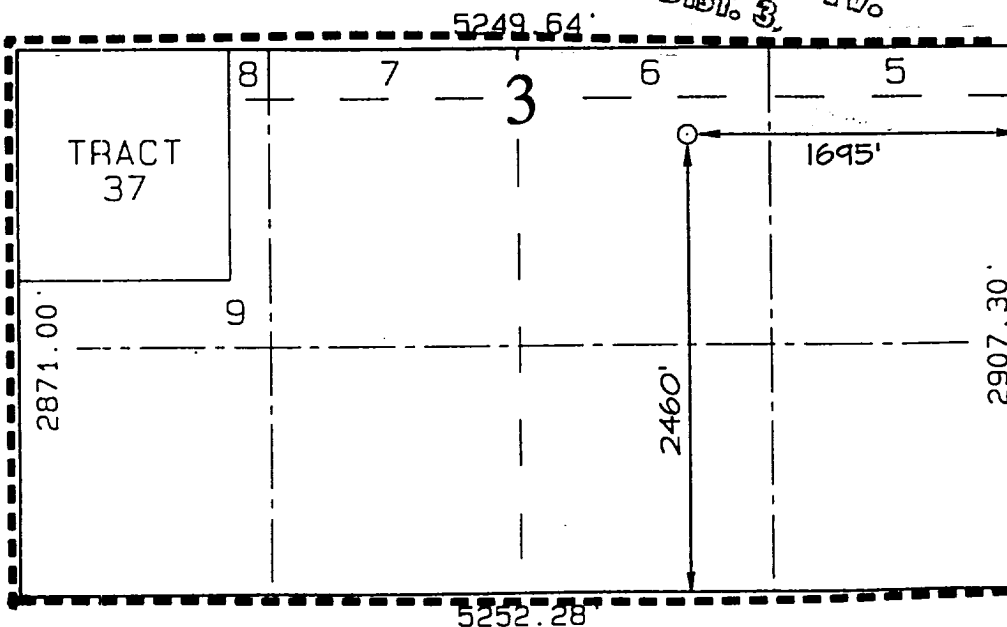
UL or lot no.	Section	Township	Range	Lot Ion	Feet from the	North/South line	Feet from the	East/West line	County

¹² Dedicated Acres 352.87	¹³ Joint or Infill Y	¹⁴ Consolidation Code U	¹⁵ Order No.
---	------------------------------------	---------------------------------------	-------------------------

NO ALLOWABLE WILL BE ASSIGNED TO THIS DEDICATION UNTIL ALL INTERESTS HAVE BEEN CONSOLIDATED OR A NON-STANDARD UNIT HAS BEEN APPROVED BY THE DIVISION

16

RECEIVED
AUG 13 1999
OIL CON. DIV.
DIST. 3.



¹⁷ OPERATOR CERTIFICATION

I hereby certify that the information contained herein is true and complete to the best of my knowledge and belief.

Paul C. Thompson
Signature

Paul C. Thompson
Printed Name
Agent

Title
8/12/99

Date

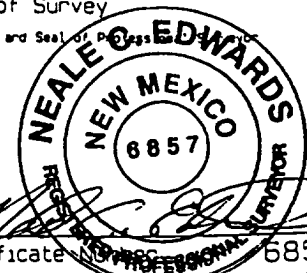
¹⁸ SURVEYOR CERTIFICATION

I hereby certify that the well location shown on this plat was plotted from field notes of actual surveys made by me or under my supervision and that the same is true and correct to the best of my belief.

FEBRUARY 3, 1999

Date of Survey

Signature and Seal of Professional Surveyor



OK