

UNITED STATES  
DEPARTMENT OF THE INTERIOR  
BUREAU OF LAND MANAGEMENT

ROW/APD

FORM APPROVED  
Budget Bureau No. 1004-0136  
Expires: February 28, 1995

APPLICATION FOR PERMIT TO DRILL OR DEEPEN

1a. Type of Work

DRILL ☒

DEEPEN ☐

b. Type of Well

Oil Well ☐

Gas Well ☒

Other ☐

Single Well ☒

Multiple Zone ☐

2. Name of Operator

Williams Exploration & Production

3. Address and Telephone No

P.O. Box 3102, MS 37-2, Tulsa, OK. 74101

4. Location of Well (Footages)

At Surface

1025 FSL 850 FEL (SESE)

At proposed prod. zone

Same

14. Distance in Miles and Directions from Nearest Town or Post Office

18.5 miles NE Navajo Dam Post Office (straight line)

15. Distance from Proposed Location to Nearest

Property or Lease Line, Ft 850'

16. No. of Acres in Lease

2560

17. No. of Acres Assigned to This Well

320 acres

18. Distance from Proposed Location to Nearest Well Drilling, Completed, or Applied for, on this Lease, FT

2000'

19. Proposed Depth

6020'

20. Rotary or Cable Tools

Rotary

21. Elevations (Show whether DF, RT, GR, etc)

6273' GR

22. Approximate Date Work will Start

April 1, 2000

5. Lease Designation and Serial No.  
SF-078771

6. If Indian, Allottee or Tribe Name

7. If Unit or CA, Agreement Designation

Rosa Unit

8. Well Name and No.  
RU-# 14A

9. API Well No.

30-039-26280

10. Field and Pool, or Exploratory Area  
Blanco - MV

11. Sec., T., R., M., or BLK.  
and Survey or Area

Section 23, T31N, R6W

12. County or Parish  
Rio Arriba

13. State  
NM

PROPOSED CASING AND CEMENTING PROGRAM

| SIZE OF HOLE | SIZE & GRADE OF CASING | WEIGHT PER FOOT | SETTING DEPTH | QUANTITY OF CEMENT            |
|--------------|------------------------|-----------------|---------------|-------------------------------|
| 12-1/4"      | 9-5/8"                 | 36#             | 250'          | 130 sx-176 cu ft Type III     |
| 8-3/4"       | 7"                     | 20#             | 3585'         | 400 sx-830 cu ft Lite 65/35   |
| 6-1/4"       | 4-1/2"                 | 10.5#           | 3485' - 6020' | 70 sx-150-cuft 110 sx-240cuft |

Williams Exploration & Production proposes to drill a vertical well to develop the Mesa Verde Formation at the above described location, in accordance with the attached Operation and Surface Use plans. The location has been surveyed for Cultural Resources by Moore Anthropological Research. Copies have been submitted to your office for review.

This APD also is serving as an application to obtain BLM road and pipeline rights-of-way. This well will be accessed by a new 42-foot access road, which will then tie into an existing road (see plat #4). The pipeline will tie into the RU # 219 which is 984 feet NW of the proposed location (see the attached Plat Map # 4).

DRILLING OPERATIONS AUTHORIZED ARE  
SUBJECT TO COMPLIANCE WITH ATTACHED  
"GENERAL REQUIREMENTS"

IN ABOVE SPACE DESCRIBE PROPOSED PROGRAM: If proposal to deepen, give present productive zone and proposed new productive zone.

COPIES: BLM+4, WELL FILE+1

24. I hereby certify that the foregoing is true and correct

Signed

*Steve Nelson*

Steve Nelson

Title Agent

Date December 14, 1999

(This space for Federal or State office use)

Permit No

Approval Date

Application approval does not warrant or certify that applicant holds legal or equitable title to those rights in the subject lease which would entitle the applicant to conduct operations thereon.

Conditions of approval, if any:

APPROVED BY

TITLE

Team Lead, Permit

DATE

MAR 6 2000

NACD

Acting

District I  
PO Box 1980, Hobbs, NM 88241-1980  
District II  
PO Drawer DD, Artesia, NM 88211-0719  
District III  
1000 Rio Brazos Rd., Aztec, NM 87410  
District IV  
PO Box 2088, Santa Fe, NM 87504-2088

State of New Mexico  
Energy, Minerals & Natural Resources Department

Form C-102  
Revised February 21, 1994  
Instructions on back  
Submit to Appropriate District Office  
State Lease - 4 Copies  
Fee Lease - 3 Copies

OIL CONSERVATION DIVISION  
PO Box 2088  
Santa Fe, NM 87504-2088

RECEIVED  
BLM MAIL ROOM

56 FEB 25 PM 2:58

☐ AMENDED REPORT

WELL LOCATION AND ACREAGE DEDICATION PLAT, NM

|   |   |   |
|---|---|---|
| <sup>1</sup> API Number<br>30-039-26780 | <sup>1</sup> Pool Code<br>72319                       | <sup>1</sup> Pool Name<br>BLANCO MESA VERDE |
| <sup>4</sup> Property Code<br>008480    | <sup>4</sup> Property Name<br>Rosa Unit               | <sup>6</sup> Well Number<br>14A             |
| <sup>1</sup> OGRJD No.<br>120782        | <sup>1</sup> Operator Name<br>Williams Production Co. | <sup>6</sup> Elevation<br>.6273'            |

<sup>10</sup> Surface Location

|                    |               |                  |              |         |                       |                           |                      |                        |                |
|--------------------|---------------|------------------|--------------|---------|-----------------------|---------------------------|----------------------|------------------------|----------------|
| UL or lot no.<br>P | Section<br>23 | Township<br>31 N | Range<br>6 W | Lot Ida | Feet from the<br>1025 | North/South line<br>South | Feet from the<br>850 | East/West line<br>East | County<br>R.A. |
|--------------------|---------------|------------------|--------------|---------|-----------------------|---------------------------|----------------------|------------------------|----------------|

<sup>11</sup> Bottom Hole Location If Different From Surface

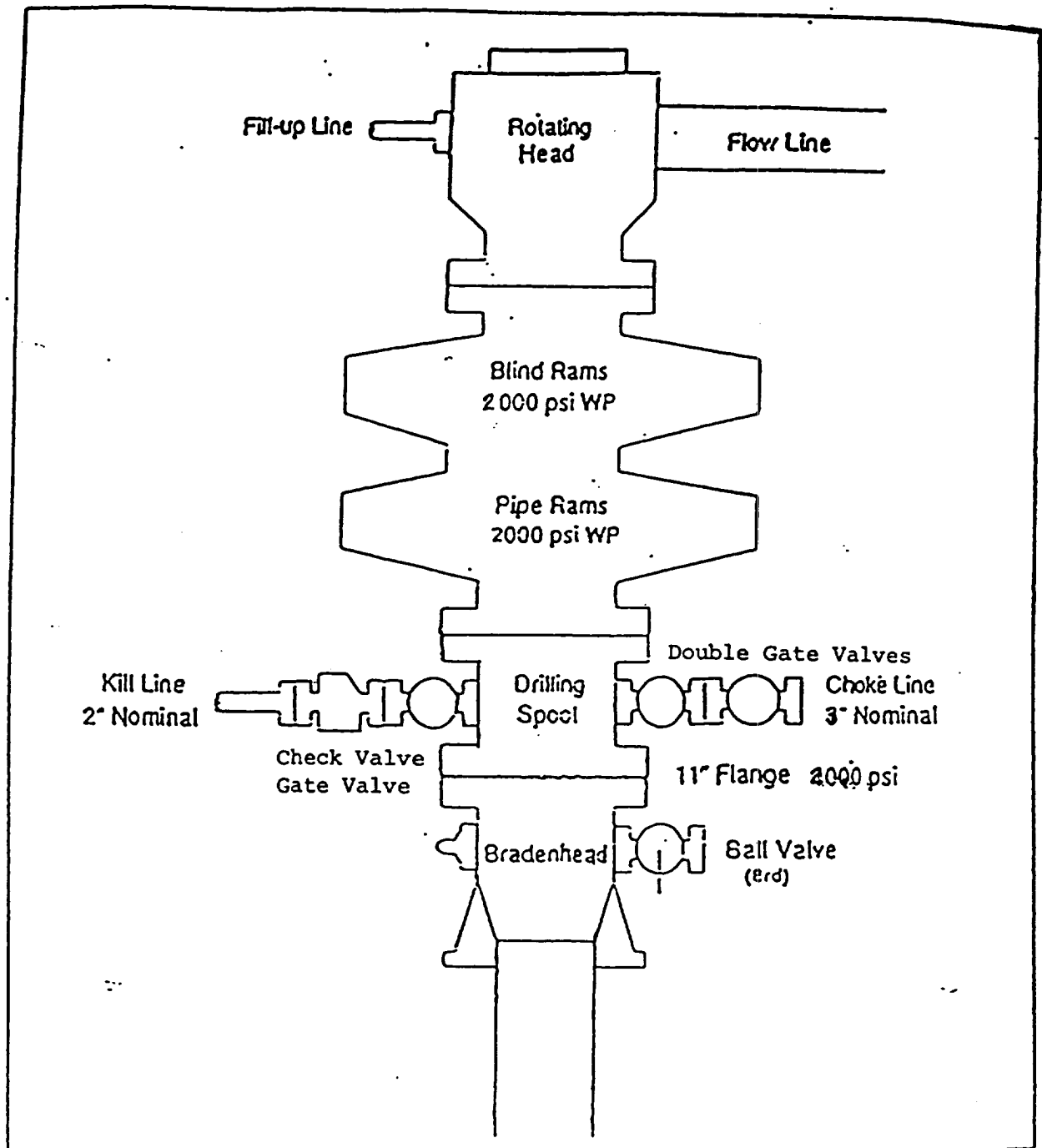
|                                      |                                    |                                       |                         |         |               |                  |               |                |        |
|--------------------------------------|------------------------------------|---------------------------------------|-------------------------|---------|---------------|------------------|---------------|----------------|--------|
| UL or lot no.                        | Section                            | Township                              | Range                   | Lot Ida | Feet from the | North/South line | Feet from the | East/West line | County |
| <sup>12</sup> Dedicated Acres<br>320 | <sup>13</sup> Joint or Infill<br>N | <sup>14</sup> Consolidation Code<br>U | <sup>15</sup> Order No. |         |               |                  |               |                |        |

NO ALLOWABLE WILL BE ASSIGNED TO THIS COMPLETION UNTIL ALL INTERESTS HAVE BEEN CONSOLIDATED  
OR A NON-STANDARD UNIT HAS BEEN APPROVED BY THE DIVISION

|          |          |   |
|----------|----------|---|
| 16       | 5280.00' | 17 OPERATOR CERTIFICATION<br>I hereby certify that the information contained herein is true and complete to the best of my knowledge and belief<br>Signature<br>Paul C. Thompson<br>Printed Name<br>Paul C. Thompson, Agent<br>Walsh Engr. & Prod. Corp.<br>Title<br>President<br>Date<br>2/21/96   |
| 23       | 5278.68' | 18 SURVEYOR CERTIFICATION<br>I hereby certify that the well location shown on this plat was plotted from field notes of actual surveys made by me or under my supervision, and that the same is true and correct to the best of my belief.<br>Date of Survey<br>12-5-95<br>Signature and Title of Professional Surveyor<br>NEALE C. EDWARDS<br>8831<br>6857<br>Certificate Number |
| 5280.00' | 850'     |   |

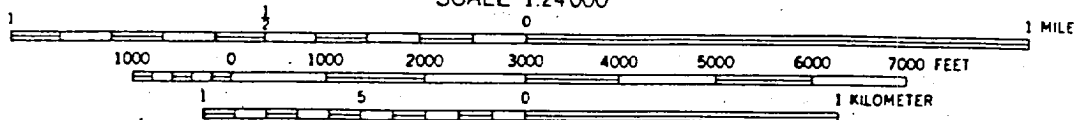
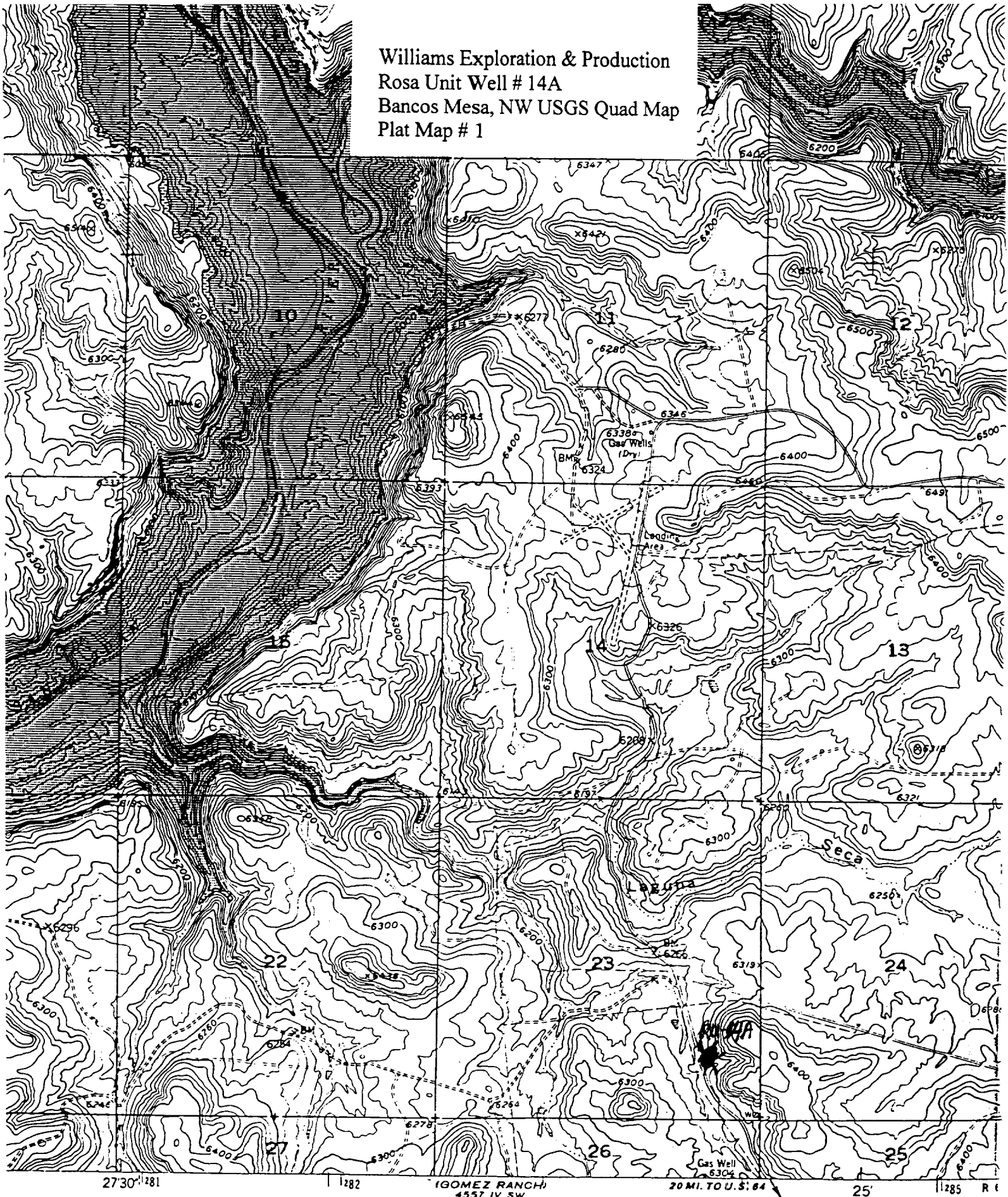
# EXHIBIT 1

## BOP STACK ARRANGEMENT



All ram type preventers and related equipment will be hydraulically tested at nipple-up and after any use under pressure to 1500 psi. The blind rams will be hydraulically activated and checked for operational readiness each time pipe is pulled out of the hole. All checks of the BOP stack and equipment will be noted on the daily drilling report. The BOP equipment will include a kelly cock with handle, floor safety valve with change overs for each tool joint in the string, and choke manifold all rated to 2000 psi.

Williams Exploration & Production  
Rosa Unit Well # 14A  
Bancos Mesa, NW USGS Quad Map  
Plat Map # 1



CONTOUR INTERVAL 20 FEET  
NATIONAL GEODETIC VERTICAL DATUM OF 1929