

UNITED STATES
DEPARTMENT OF THE INTERIOR
BUREAU OF LAND MANAGEMENT

ROW/APD

FORM APPROVED
Budget Bureau No. 1004-0136
Expires: February 28, 1995

APPLICATION FOR PERMIT TO DRILL OR DEEPEN

1a. Type of Work

DRILL ☒

DEEPEN ☐

b. Type of Well

Oil Well ☐ Gas Well ☒ Other ☐

Single Well ☒

Multiple Zone ☐

2. Name of Operator

Williams Exploration & Production

120782

3. Address and Telephone No

P.O. Box 3102, MS 37-2, Tulsa, OK. 74101

4. Location of Well (Footages)

At Surface

1085' FSL 790' FWL (SESW)

At proposed prod. zone

Same

14. Distance in Miles and Directions from Nearest Town or Post Office

20.2 miles East Navajo Dam Post Office (straight line)

15. Distance from Proposed Location to Nearest Property or Lease Line, Ft

790'

16. No. of Acres in Lease

2507.3 acres

17. No. of Acres Assigned to This Well

231.83 acres S/2

18. Distance from Proposed Location to Nearest Well Drilling, Completed, or Applied for, on this Lease, FT

200'

19. Proposed Depth

6107'

20. Rotary or Cable Tools

Rotary

21. Elevations (Show whether DF, RT, GR, etc)

6335' GR

22. Approximate Date Work will Start

April 1, 2000

PROPOSED CASING AND CEMENTING PROGRAM

SIZE OF HOLE	SIZE & GRADE OF CASING	WEIGHT PER FOOT	SETTING DEPTH	QUANTITY OF CEMENT
12-1/4"	9-5/8"	36#	250'	130 sx-176 cu ft Type III
8-3/4"	7"	20#	3672'	410 sx-862 cu ft Lite 175 sx-242 Cu ft-Type III
6-1/4"	4-1/2"	10.5#	3572' - 6107'	70 sx-150-cuft 110 sx-240cuft Lite HS 65/35

Williams Exploration & Production proposes to drill a vertical well to develop the Mesa Verde Formation at the above described location, in accordance with the attached Operation and Surface Use plans. The location has been surveyed for Cultural Resources by Moore Antropological Research. The report has been submitted to your office for review.

This APD also is serving as an application to obtain BLM road and pipeline rights-of-way. This well will be accessed by constructing approximately 150-feet of a new re-routed access road which ties into an existing road (see plat #4). The proposed 245-foot long pipeline would tie into the Williams Gathering System (see the attached Plat Map # 4).

This action is subject to technical and procedural review pursuant to 43 CFR 3165.3 and appeal pursuant to 43 CFR 3165.4.

DRILLING OPERATIONS AUTHORIZED ARE
SUBJECT TO COMPLIANCE WITH ATTACHED
"GENERAL REQUIREMENTS"

14. Approved by: Steve Nelson Title Agent

COPIES: BLM+4, WELL FILE+1
Date December 21, 1999

(This space for Federal or State office use)

Permit No.

Application approval does not warrant or certify that applicant holds legal or equitable title to those rights in the subject lease which would entitle the applicant to conduct operations thereon. Conditions of approval, if any

APPROVED BY:

/s/ Charles Beacham

TITLE
NMCD

DATE

MAR 3 2000

District I
PO Box 1980, Hobbs, NM 88241-1980

State of New Mexico
Energy, Minerals & Natural Resources Department

Form C-102
Revised February 21, 1994
Instructions on back
Submit to Appropriate District Office
State Lease - 4 Copies
Fee Lease - 3 Copies

District II
PO Box 100, Artesia, NM 88211-0719

OIL CONSERVATION DIVISION
PO Box 2088
Santa Fe, NM 87504-2088

District III
PO Box 2088, Aztec, NM 87410

☐ AMENDED REPORT

District IV
PO Box 2088, Santa Fe, NM 87504-2088

WELL LOCATION AND ACREAGE DEDICATION PLAT

API Number 30039-26283		Pool Code	Pool Name Blanco MW	
Property Code 17033	Property Name ROSA UNIT			Well Number 182
Order No. 120782	Operator Name WILLIAMS PRODUCTION COMPANY			Elevation 6335

10 Surface Location

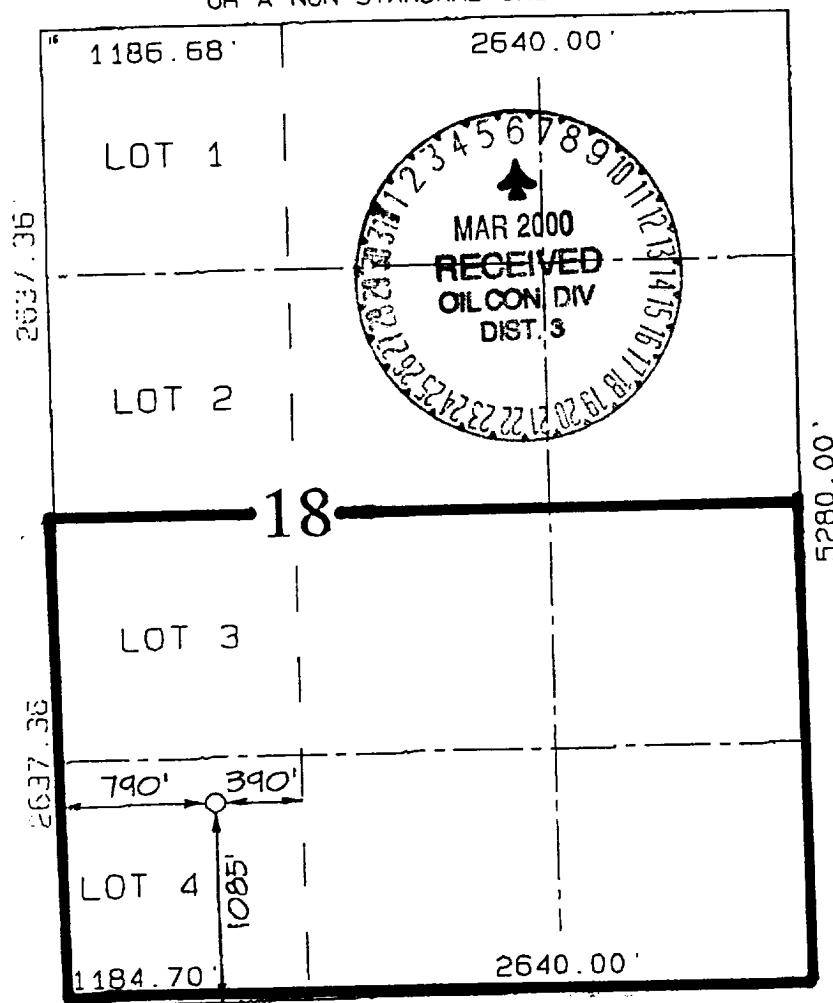
Section	Township	Range	Lot Idn	Feet from the	North/South line	Feet from the	East/West line	County
18	31N	5W		1085	SOUTH	790	WEST	RIO ARriba

11 Bottom Hole Location If Different From Surface

Section	Township	Range	Lot Idn	Feet from the	North/South line	Feet from the	East/West line	County

Decedent Acres 231.83	Joint or Infill	Consolidation Code	Order No.
---------------------------------	-----------------	--------------------	-----------

ALLOWABLE WILL BE ASSIGNED TO THIS COMPLETION UNTIL ALL INTERESTS HAVE BEEN CONSOLIDATED OR A NON-STANDARD UNIT HAS BEEN APPROVED BY THE DIVISION



17 OPERATOR CERTIFICATION

I hereby certify that the information contained herein is true and complete to the best of my knowledge and belief.

Steve Nelson
Signature

Steve Nelson
Printed Name

Agent, Nelson Consulting
Title

December 22, 1999
Date

18 SURVEYOR CERTIFICATION

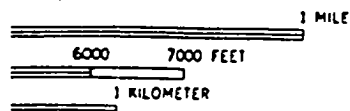
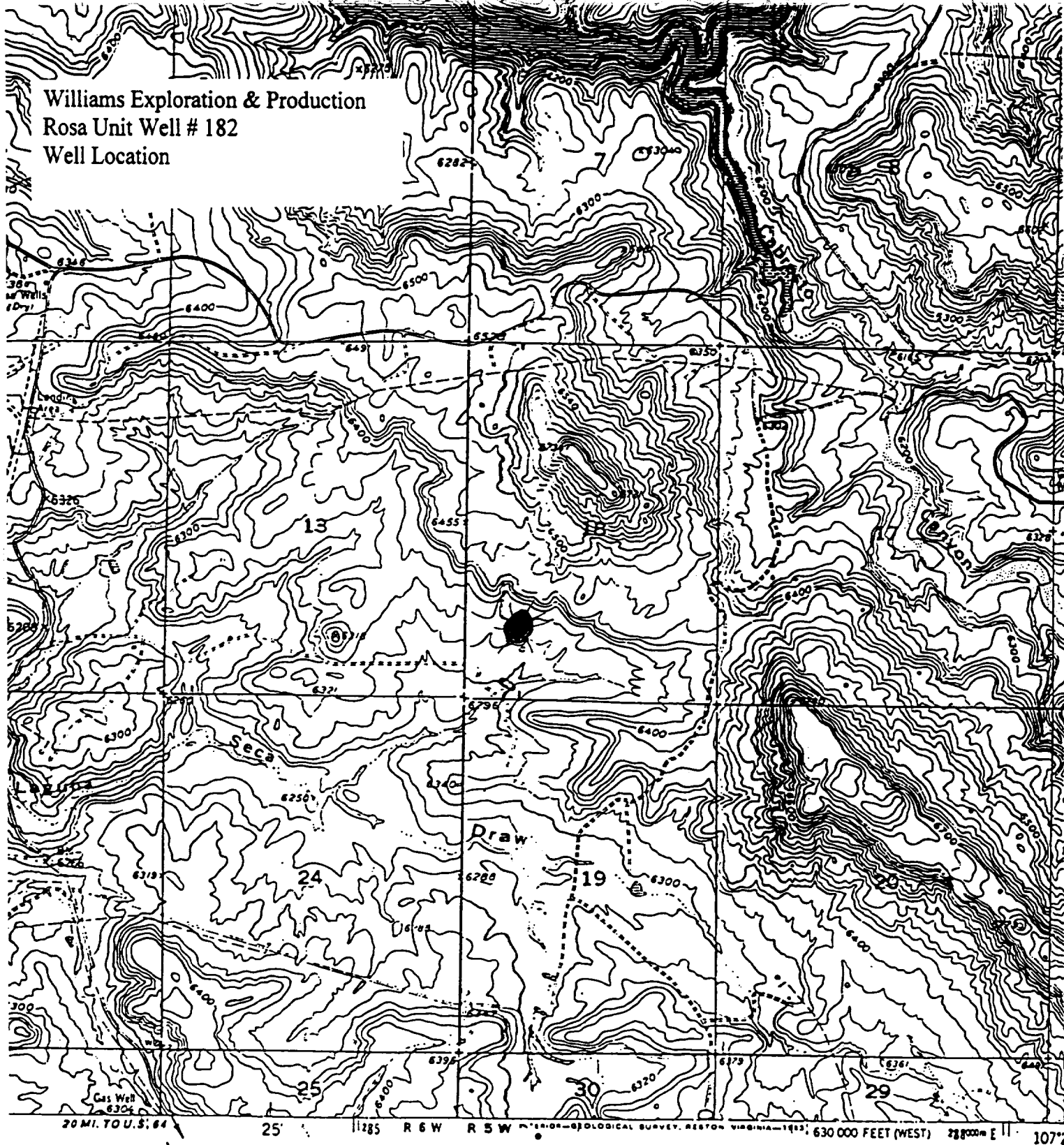
I hereby certify that the well location shown on this plat was plotted from field notes of actual surveys made by me or under my supervision, and that the same is true and correct to the best of my belief.

SEPTEMBER 1, 1999

Date of Survey
Signature and Seal of Professional Surveyor

Neale G. Edwards
NEALE G. EDWARDS
NEW MEXICO
6857
Professional Surveyor
Certificate Number 6857

Williams Exploration & Production
Rosa Unit Well # 182
Well Location



QUADRANGLE LOCATION

ROAD CLASSIFICATION
Light-duty ————— Unimproved dirt

STANDARDS
OR RESTON, VIRGINIA 22092
AVAILABLE ON REQUEST

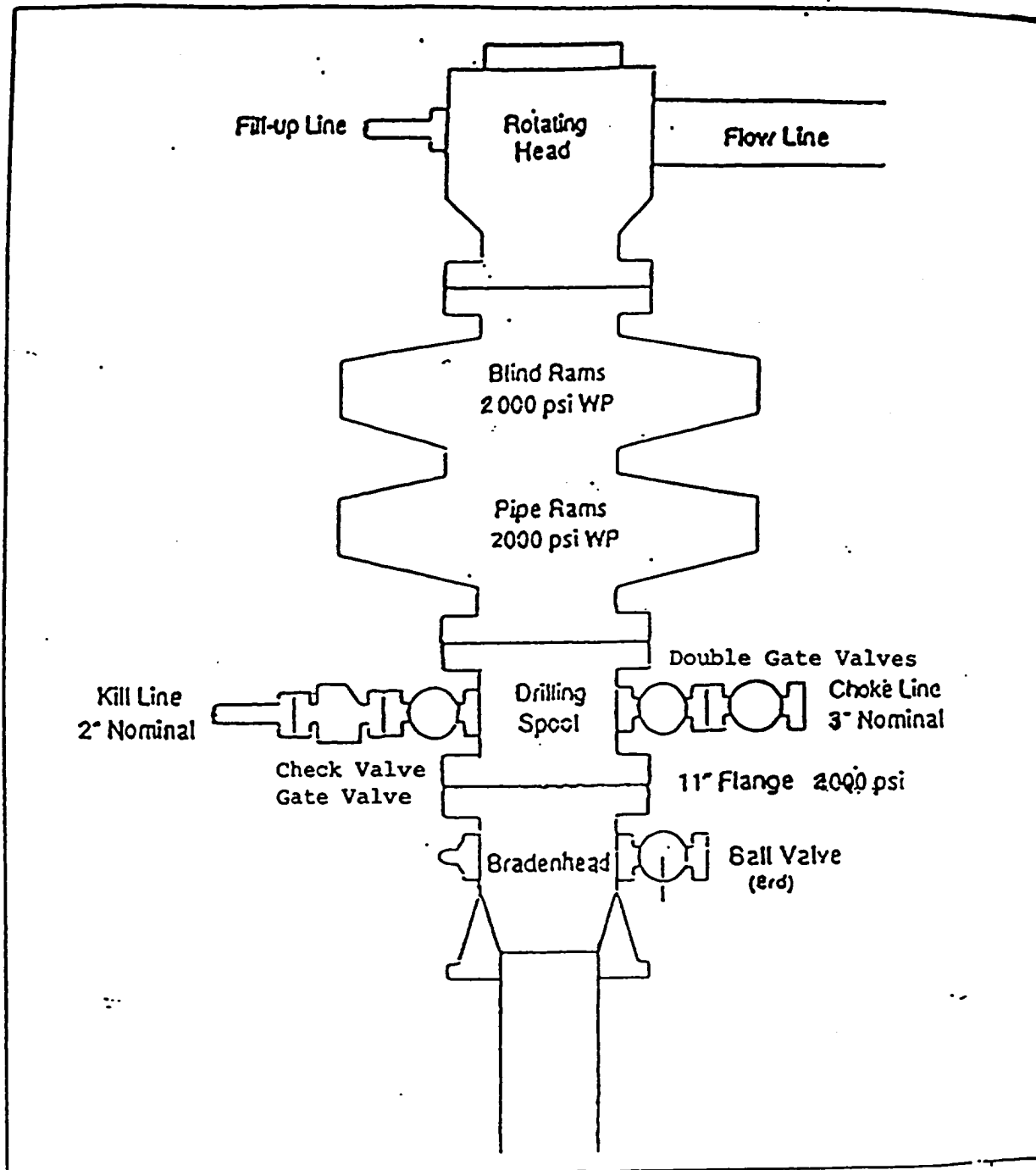
Revisions shown in purple and woodland compiled from
aerial photographs taken 1981 and other source data
Partial field check by U.S. Forest Service. Map edited 1982

BANCOS MESA -N.W., N. MEX.
(FORMERLY ROSA)
N3652.5-W10722.5/7.5

1954
PHOTOREVISED 1982
DMA 4557 IV NW-SERIES V881

EXHIBIT 1

BOP STACK ARRANGEMENT



All ram type preventers and related equipment will be hydraulically tested at nipple-up and after any use under pressure to 1500 psi. The blind rams will be hydraulically activated and checked for operational readiness each time pipe is pulled out of the hole. All checks of the BOP stack and equipment will be noted on the daily drilling report. The BOP equipment will include a kelly cock with handle, floor safety valve with change overs for each tool joint in the string, and choke manifold all rated to 2000 psi.