

UNITED STATES
DEPARTMENT OF THE INTERIOR
BUREAU OF LAND MANAGEMENT

ROW/APD

FORM APPROVED
Budget Bureau No. 1004-0136
Expires: February 28, 1995

APPLICATION FOR PERMIT TO DRILL OR DEEPEN

1a. Type of Work

DRILL ☒DEEPEN ☐

b. Type of Well

Oil Well ☐Gas Well ☒Other ☐Single Well ☒Multiple Zone ☐

2. Name of Operator

Williams Production Company

3. Address and Telephone No

P.O. Box 3102, MS 37-2, Tulsa, OK. 74101

4. Location of Well (Footages)

At Surface

1185' FNL 1845' FEL, NWNE of Sec. 20, T31N, R5W

819' 1778'
proposed prod. zone 1300' FNL 1340' FWL, NENW of Sec. 20, T31N, R5W

14. Distance in Miles and Directions from Nearest Town or Post Office

20.7 miles northeast Navajo Dam Post Office (straight line)

15. Distance from Proposed Location to Nearest Property or Lease Line, Ft

1185' and 1300'

16. No. of Acres in Lease

2507.3 acres

17. No. of Acres Assigned to This Well

320 acres N/2

18. Distance from Proposed Location to Nearest Well Drilling, Completed, or Applied for, on this Lease, FT

150' This action is subject to technical and

19. Proposed Depth

6351' KB

20. Rotary or Cable Tools

Rotary

21. Elevations (Show whether DF, RT, GR, etc.)
6564' GR
This action is subject to technical and procedural review pursuant to 43 CFR 3165.3 and appeal pursuant to 43 CFR 3165.4.

22. Approximate Date Work will Start

April 1, 2000

PROPOSED CASING AND CEMENTING PROGRAM

SIZE OF HOLE	SIZE & GRADE OF CASING	WEIGHT PER FOOT	SETTING DEPTH	QUANTITY OF CEMENT
12-1/4"	9-5/8"	36#	250'	125 sx-176 cu ft Type III
8-3/4"	7"	20#	4383'	500 sx-1041 cu ft Lite 200 sx-276 Cu ft-Type III
6-1/4"	4-1/2"	10.5#	4283' - 6886'	80 sx-114-cuft 230 sx-340cuft Poz/Class H, 50/50

Williams Exploration & Production proposes to drill a directional well to develop the Mesa Verde Formation at the above described location, in accordance with the attached Operation and Surface Use plans. The location has been surveyed for Cultural Resources by Moore Anthropological Research of Aztec, NM. The report has been submitted to your office for review.

This APD also is serving as an application to obtain BLM road and pipeline rights-of-way. This well will be twinned and accessed by the Rosa Unit Well # 321 access road (see plats #3). The proposed 111-foot long pipeline would tie into the Williams Gathering System on the Rosa Unit Well #321 (see the attached Plat Map # 4).

DRILLING OPERATIONS AUTHORIZED ARE
SUBJECT TO COMPLIANCE WITH ATTACHED
"GENERAL REQUIREMENTS"

I, Steve Nelson, propose to deepen, give present productive zone and proposed new productive zone.

Signed

Steve Nelson

Title Agent

COPIES: BLM+4, WELL FILE+1

Date January 19, 2000

(This space for Federal or State office use)

Permit No

Application approval does not warrant or certify that applicant holds legal or equitable title to those rights in the subject lease which would entitle the applicant to conduct operations thereon.

Conditions of approval, if any:

APPROVED BY

NMOCD Team Lead, Petroleum Management

TITLE

Approval Date

MAR 6 2000

DEC-21-99 TUE 10:54 AM NCE.SURVEYS, INC.

325 2654

P.04

Dist: 1
PO Box 140, Hobbs, NM 88241-1960State of New Mexico
Energy, Minerals & Natural Resources DepartmentForm C-102
Revised February 21, 1994Dist: 1
PO Box 140, Artesia, NM 88211-0719OIL CONSERVATION DIVISION
PO Box 2088
Santa Fe, NM 87504-2088Submit to Appropriate District Office
State Lease - 4 Copies
Fee Lease - 3 CopiesDist: 1
PO Box 140, Aztec, NM 87410Dist: 1
PO Box 140, Santa Fe, NM 87504-2088☐ AMENDED REPORT

WELL LOCATION AND ACREAGE DEDICATION PLAT

API Number 30-039-26314		Pool Code 72319	Pool Name Blanco - Mesa Verde
Property Code 17033	Property Name ROSA UNIT		Well Number 85A
Well No. 120782	Operator Name WILLIAMS PRODUCTION COMPANY		Elevation 6564'

10 Surface Location

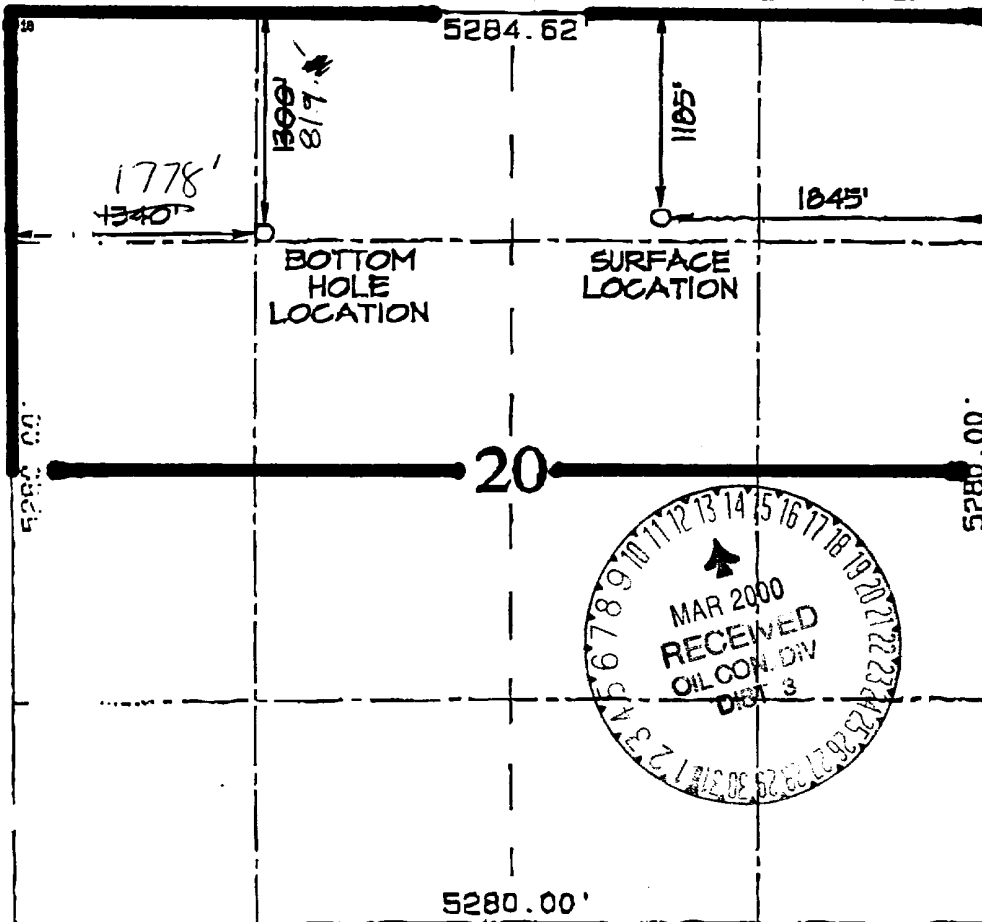
Section	Township	Range	Lot	Feet from the	North/South Line	Feet from the	East/West Line	County
20	31N	5W		1185	NORTH	1845	EAST	ARIZONA

11 Bottom Hole Location If Different From Surface

Section	Township	Range	Lot	Feet from the	North/South Line	Feet from the	East/West Line	County
20	31N	5W		1340	NORTH	1778'	WEST	ARIZONA

Block or Well	Consolidation Code	Order No.
320 N/2	I	U

1. A WELL OILABLE WILL BE ASSIGNED TO THIS COMPLETION UNTIL ALL INTERESTS HAVE BEEN CONSOLIDATED OR A NON-STANDARD UNIT HAS BEEN APPROVED BY THE DIVISION



12 OPERATOR CERTIFICATION

I hereby certify that the information contained herein is true and correct to the best of my knowledge and belief.

Steve Nelson
Signature

Steve Nelson
Printed Name

Agent, Nelson Consulting
Title

January 19, 2000
Date

13 SURVEYOR CERTIFICATION

I hereby certify that the well location shown on this plat was obtained from field notes of (a) survey made by me or under my supervision, and that this plat is true and correct to the best of my belief.

DECEMBER 4, 1999
Date of Survey

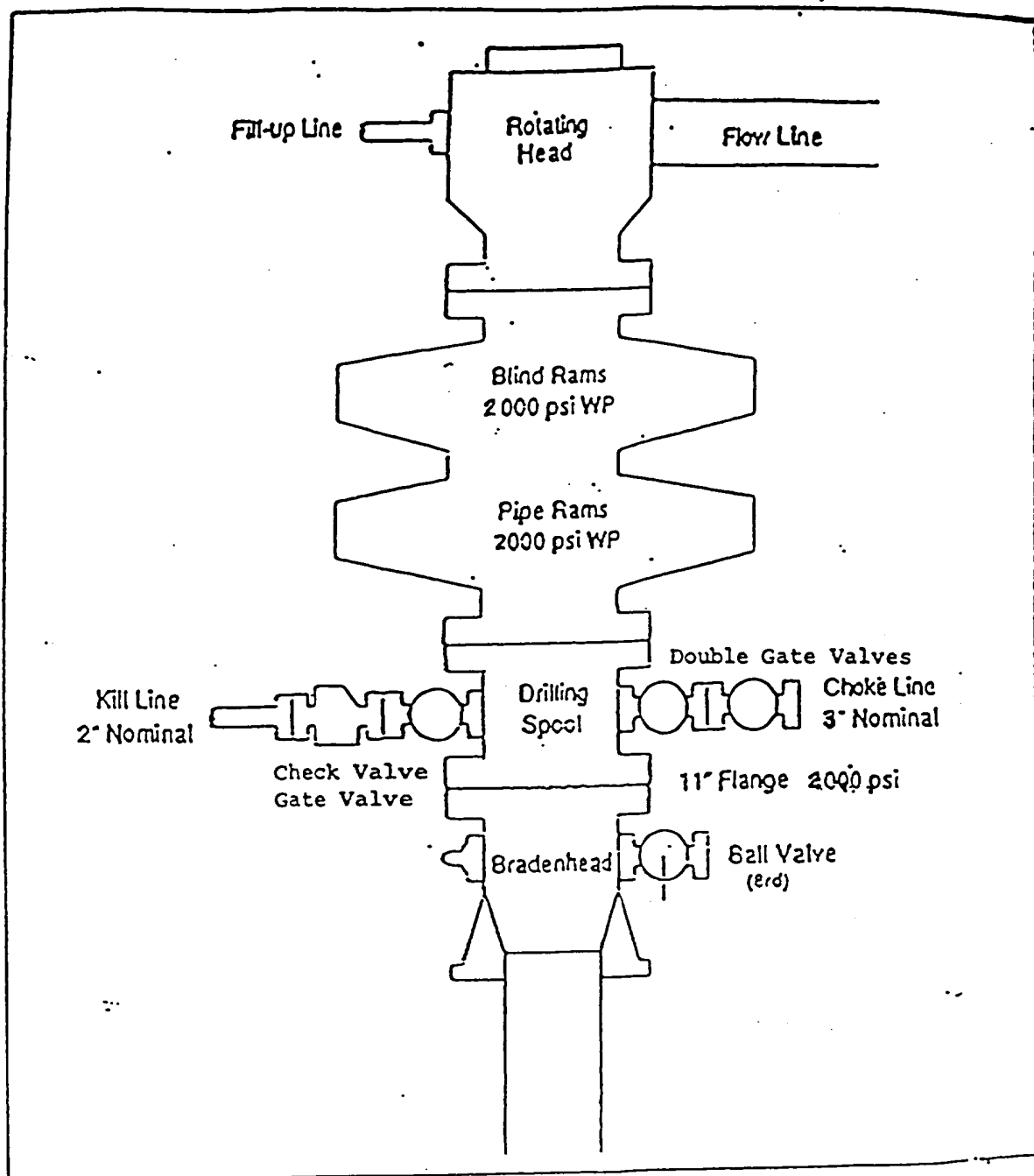
Signature and Seal of Surveyor

NEALE G. EDWARDS
NEW MEXICO
6857

Certificate Number 6857

EXHIBIT 1

BOP STACK ARRANGEMENT



All ram type preventers and related equipment will be hydraulically tested at nipple-up and after any use under pressure to 1500 psi. The blind rams will be hydraulically activated and checked for operational readiness each time pipe is pulled out of the hole. All checks of the BOP stack and equipment will be noted on the daily drilling report. The BOP equipment will include a kelly cock with handle, floor safety valve with change overs for each tool joint in the string, and choke manifold all rated to 2000 psi.

1185' FNL & 1845' FEL, SECTION 20, T31N, R5W, N.M.P.M.
RIO ARriba COUNTY, NEW MEXICO

