



ENERGY SERVICES  
One Williams Center  
P.O. Box 3102  
Tulsa, Oklahoma 74101  
918/573-4592

April 25, 2000

Ms. Lori Wrotenbery  
New Mexico Oil Conservation Division  
2040 S. Pacheco  
Santa Fe, NM 87505

Re: Non-Standard Gas Proration Unit  
Rosa Unit #163 (API# 30-039-26345)  
1740' FNL, 985' FEL  
Section 24(G)-T31N-R6W  
Rio Arriba County, NM  
Blanco Mesa Verde



Dear Ms. Wrotenbery,

According to rule 605.B(2)(a) Williams Production Company hereby requests administrative approval for a non-standard gas proration unit in the Blanco Mesa Verde pool for the referenced well. The proposed spacing unit is east half of Section 24, T31N, R6W, which is 223.92 acres due to a variation in the legal subdivision of the U.S. Public Land Surveys.

As the Unit Operator of the Rosa Unit, Williams Production is the only offset operator. Attached is a plat indicating the well location and proposed spacing unit.

Thank you for your consideration and approval of this application. If you have any questions, please do not hesitate to call me at (918) 573-6254.

Sincerely,

Ms. Tracy Ross  
Production Analyst

CC: BLM Farmington NM  
NMOCD Aztec NM

PAGE 02

Form C-102  
Revised February 21, 1994  
Instructions on back  
Appropriate District Office  
State Lease - 4 Copies  
Fee Lease - 3 Copies

OIL CONSERVATION DIVISION  
PO Box 2088  
Santa Fe, NM 87504-2088

☐ AMENDED REPORT

District IV  
PO Box 2088, Santa Fe, NM 87504-2088

## WELL LOCATION AND ACREAGE DEDICATION PLAT

'API Number'	'Pool Code'	'Pool Name'
	72319	Blanco - MV
'Property Code'	'Property Name'	'Well Number'
17033	ROSA UNIT	163
'OGRID No.'	'Operator Name'	'Elevation'
120782	WILLIAMS PRODUCTION COMPANY	6248

### 10 Surface Location

U. or lot no.	Section	Township	Range	Loc. 1st	Feet from the	North/South line	Feet from the	East/West line	County
G	24	31N	6W		1740	NORTH	985	EAST	RIO ARriba

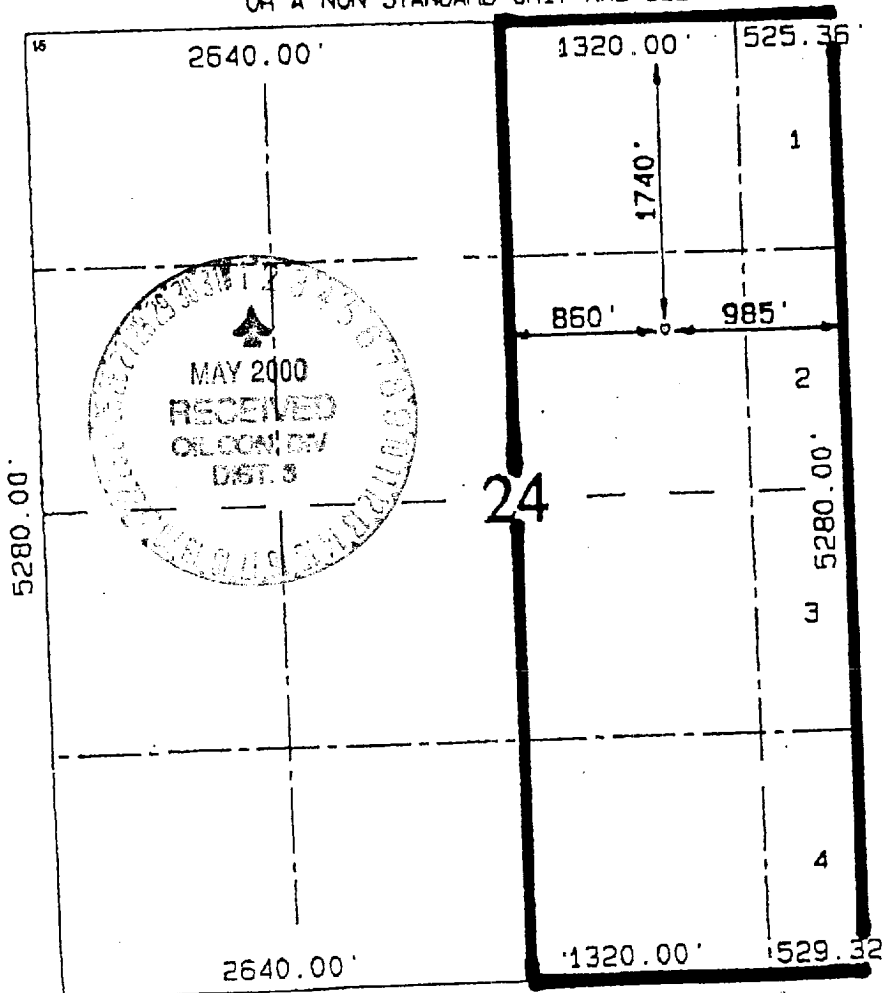
## "Bottom Hole Location If Different From Surface

LA or Int no.	Section	Township	Range	Lot Ion	Feet from the North/South Line	Feet from the East/West Line	County
<sup>a</sup> Dedicated Acres	<sup>b</sup> Joint or Infill	<sup>c</sup> Consideration Code	<sup>d</sup> Order No.				
223.92 E/2	I	II					

ALL INTERESTS HAVE BEEN CONSOLIDATED

23.92 E/2

NO ALLOWABLE WILL BE ASSIGNED TO THIS COMPLETION UNTIL ALL INTERESTS HAVE BEEN CONSOLIDATED  
OR A NON-STANDARD UNIT HAS BEEN APPROVED BY THE DIVISION



47 OPERATOR CERTIFICATION

I hereby certify that the information contained herein is true and complete to the best of my knowledge and belief.

Signature Steve Yedon

Signature \_\_\_\_\_

Steve Nelson

Printed Name \_\_\_\_\_

Agent, Nelson Consulting

Title

February 4, 2000

Date \_\_\_\_\_

**SURVEYOR CERTIFICATION**

I hereby certify that the well location shown on this map was plotted from field notes of actual surveys made by or under my supervision and that the same is true and correct to the best of my belief.

MARCH 31, 1998

Date of Survey

Signature and Seal of \_\_\_\_\_



ALBANY, N.Y.

NEW YORK

2007



*[Handwritten signature]*

*[Handwritten signature]*

Certificate Number

