

District I
PO Box 1980, Hobbs, NM 88241-1980
District II
811 South First, Artesia, NM 88210
District III
1000 Rio Brazos Rd., Aztec, NM 87410
District IV
2040 South Pacheco, Santa Fe, NM 87505

State of New Mexico
Energy, Minerals & Natural Resources Department

OIL CONSERVATION DIVISION
2040 South Pacheco
Santa Fe, NM 87505

Form C-101
Revised October 18, 1994
Instructions on back
Submit to Appropriate District Office
State Lease - 6 Copies
Fee Lease - 5 Copies

AMENDED REPORT

APPLICATION FOR PERMIT TO DRILL, RE-ENTER, DEEPEN, PLUG BACK, OR ADD A ZONE

| | | |
|---|---|---|
| ¹ Operator Name and Address. Williams Production Company P.O. Box 3102, MS 37-2 Tulsa, OK 74101 | | ² OGRID Number 120782 |
| ⁴ Property Code 17033 | ⁵ Property Name Rosa Unit | ³ API Number 30-039-26387 |
| | | ⁶ Well No. 183 |

| ⁷ Surface Location | | | | | | | | | |
|-------------------------------|---------|----------|-------|---------|---------------|------------------|---------------|----------------|------------|
| UL or lot no. | Section | Township | Range | Lot Idn | Feet from the | North/South line | Feet from the | East/West line | County |
| G | 19 | 31N | 5W | | 1555' | North | 1520' | East | Rio Arriba |

| ⁸ Proposed Bottom Hole Location If Different From Surface | | | | | | | | | |
|--|---------|----------|-------|---------|-------------------------------|------------------|---------------|----------------|--------|
| UL or lot no. | Section | Township | Range | Lot Idn | Feet from the | North/South line | Feet from the | East/West line | County |
| | | | | | | | | | |
| ⁹ Proposed Pool Blanco - Mesa Verde | | | | | ¹⁰ Proposed Pool 2 | | | | |

| | | | | |
|-----------------------------------|--|--|--|--|
| ¹¹ Work Type Code N | ¹² Well Type Code G | ¹³ Cable/Rotary Rotary | ¹⁴ Lease Type Code P | ¹⁵ Ground Level Elevation 6331' GR |
| ¹⁶ Multiple No | ¹⁷ Proposed Depth 6113' KB | ¹⁸ Formation Blanco - Mesa Verde | ¹⁹ Contractor Aztec Well Service | ²⁰ Spud Date April 1, 2000 |

| ²¹ Proposed Casing and Cement Program | | | | | |
|--|-------------|--------------------|------------------|-------------------|---------------|
| Hole Size | Casing Size | Casing weight/foot | Setting Depth | Sacks of Cement | Estimated TOC |
| 12-1/4" | 9-5/8" K-55 | 36# | 250' KB | 130 sx (176 cuft) | Surface |
| 8-3/4" | 7" K-55 | 20# | 3678' KB | 590 sx (1106cuft) | Surface |
| 6-1/4" | 4-1/2" | 10.5# | 3578' - 6113' KB | 180 sx (389 cuft) | Top of Liner |
| | | | | | |
| | | | | | |

²² Describe the proposed program. If this application is to DEEPEN or PLUG BACK give the data on the present productive zone and proposed new productive zone. Describe the blowout prevention program, if any. Use additional sheets if necessary.

Williams Exploration & Production proposes to drill a vertical well with an 12-1/4" hole with water & benex to approx. 250' KB and set 9-5/8" 36# K55 surface casing, cement to surface with 130 sx of Class Type III, 2% CaCl2 (176 cu ft). Then drill 8-3/4" hole to 3678' KB, set 7" K-55 casing. Cement Lead with 415 sx (854 cu ft) of Premium Lite 65/35 Poz/Type III, with 8% gel, 1% CaCl2; Cement Tail with 175 sx (242 cuft) of class Type III with 1% CaCl2. Drill 6-1/4" hole to 6113'KB, set 4-1/2" K-55 casing, set production liner, cement Lead with 70 sx (150 Cuft) of Prem.Lite HS 65/35, cement Tail with 110 sx (239 cu ft) of Prem. Lite HS, 65/35.. Run cased hole log (TMDL). While drill pipe in use run not less than one BOP test per day. Set 9-5/8" 36# K-55 production casing from 250'KB to surface, set 7", 20# K-55 casing from 250'KB to 3678'KB, and set 4-1/2" 10.5# K-55 casing from 3578'KB to 6113'KB. Top of cement should circulate to surface (will adjust volumes based upon caliper log). A cement bond log will be run across all intervals to be perforated & find top of cement behind all casing strings. Pressure test 7" & 4-1/2" casing to 3300# for 15 minutes. Run 2-3/8", 4.7#, J-55 EUE tubing with a SN (1.91" ID) on top of bottom joint. Land tubing 50' above bottom Point Lookout perforations. Will test Mesa Verde through perforated casing. Will fracture stimulate and put on for production test. Surface ownership is Federal (BLM). Will obtain surface ROW. Formation tops: Ojo Alamo- 2453', Kirtland-2583', Fruitland-2973', Pictured Cliffs 3203', Lewis 3493', Cliff House 5393', Menefee 5438', Point Lookout 5663', Mancos 5983', TD 6113', all KB.

²³ I hereby certify that the information given above is true and complete to the best of my knowledge and belief.

Signature:

Printed name: Steve Nelson

Title: Agent, Nelson Consulting, Inc.

Date: February 22, 2000

Phone: 505-327-6331

OIL CONSERVATION DIVISION

Approved by:

Title:

Approval Date:

Conditions of Approval :
Attached ☐

SUPERVISOR DISTRICT # 3

FEB 25 2000

Expiration Date:

FEB 25 2001

District I
PO Box 1980, Hobbs, NM 88241-1980

District II
PO Drawer 00, Artesia, NM 88211-0719

District III
1000 Rio Brazos Rd., Aztec, NM 87410

District IV
PO Box 2088, Santa Fe, NM 87504-2088

State of New Mexico
Energy, Minerals & Natural Resources Department

OIL CONSERVATION DIVISION
PO Box 2088
Santa Fe, NM 87504-2088

Form C-102
Revised February 21, 1994
Instructions on back
Submit to Appropriate District Office
State Lease - 4 Copies
Fee Lease - 3 Copies

☐ AMENDED REPORT

WELL LOCATION AND ACREAGE DEDICATION PLAT

| | | | |
|------------------------------------|--|----------------------------|----------------------------------|
| *API Number 30-039-26387 | | *Pool Code 72319 | *Pool Name Blanco - MV |
| *Property Code 17033 | *Property Name ROSA UNIT | | *Well Number 183 |
| *GRID No 120782 | *Operator Name WILLIAMS PRODUCTION COMPANY | | *Elevation 6331' |

10 Surface Location

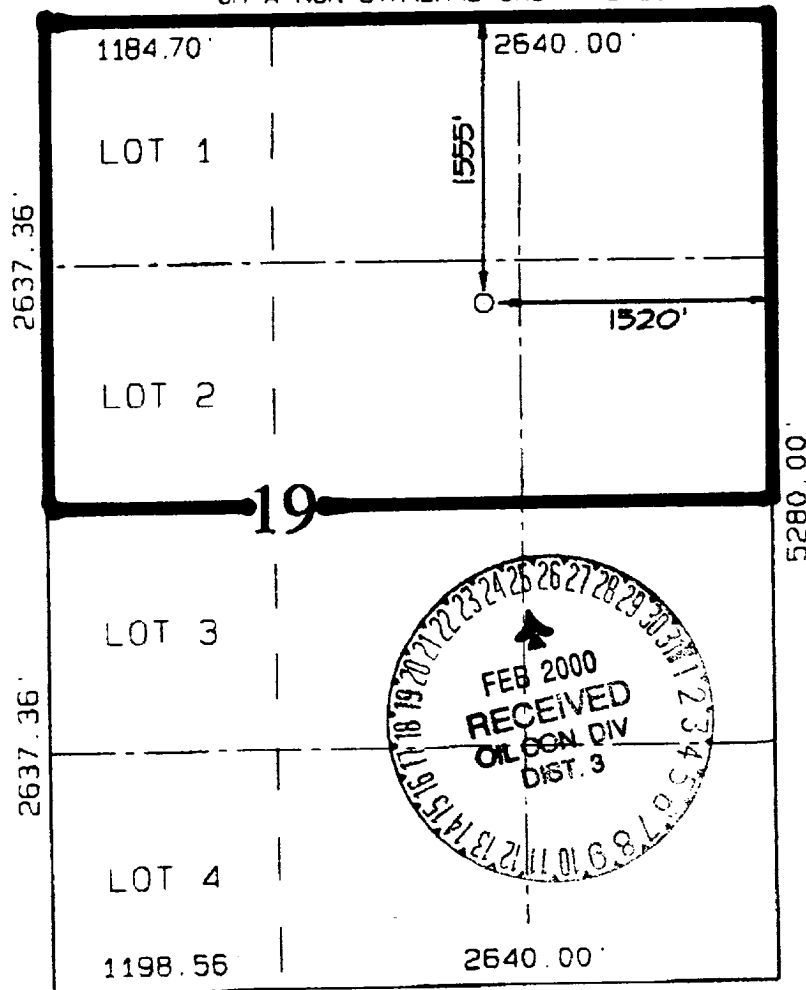
| UL or lot no | Section | Township | Range | Lot 1st | Feet from the | North/South line | Feet from the | East/West line | County |
|--------------|-----------|------------|-----------|---------|---------------|------------------|---------------|----------------|-------------------|
| G | 19 | 31N | 5W | | 1555 | NORTH | 1520 | EAST | RIO ARriba |

11 Bottom Hole Location If Different From Surface

| UL or lot no | Section | Township | Range | Lot 1st | Feet from the | North/South line | Feet from the | East/West line | County |
|--------------|---------|----------|-------|---------|---------------|------------------|---------------|----------------|--------|
| | | | | | | | | | |

| *Dedicated Acres | *Joint or Infill | *Consolidation Code | *Order No. |
|-------------------|------------------|---------------------|------------|
| 232.01 N/2 | I | U | |

NO ALLOWABLE WILL BE ASSIGNED TO THIS COMPLETION UNTIL ALL INTERESTS HAVE BEEN CONSOLIDATED OR A NON-STANDARD UNIT HAS BEEN APPROVED BY THE DIVISION



17 OPERATOR CERTIFICATION

I hereby certify that the information contained herein is true and complete to the best of my knowledge and belief.

Signature

Steve Nelson

Printed Name

Agent, Nelson Consulting
Title

February 22, 2000

Date

18 SURVEYOR CERTIFICATION

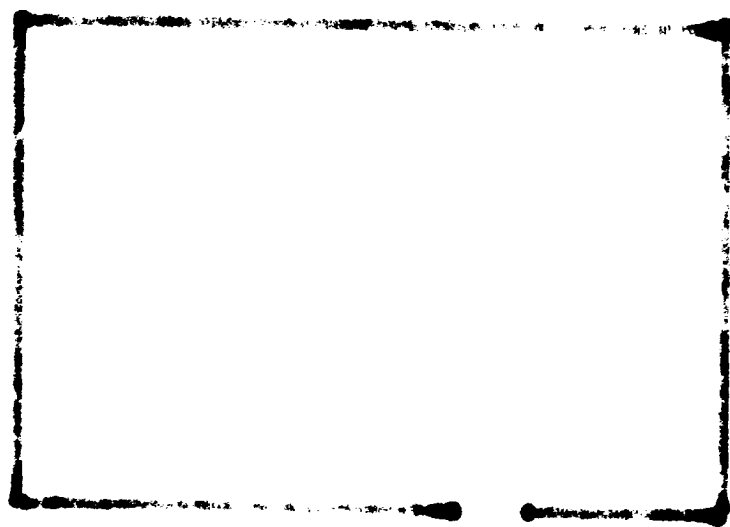
I hereby certify that the well location shown on this plat was plotted from field notes of actual surveys made by me or under my supervision, and that the same is true and correct to the best of my belief.

SEPTEMBER 3, 1999

Date of Survey

Signature and Seal

NEALE C. EDWARDS
NEW MEXICO
6857
Certificate No. 6857



WILLIAMS PRODUCTION COMPANY ROSA UNIT #183

1555' FNL & 1520' FEL, SECTION 19, T31N, R5W, N.M.P.M.
RIO ARriba COUNTY, NEW MEXICO

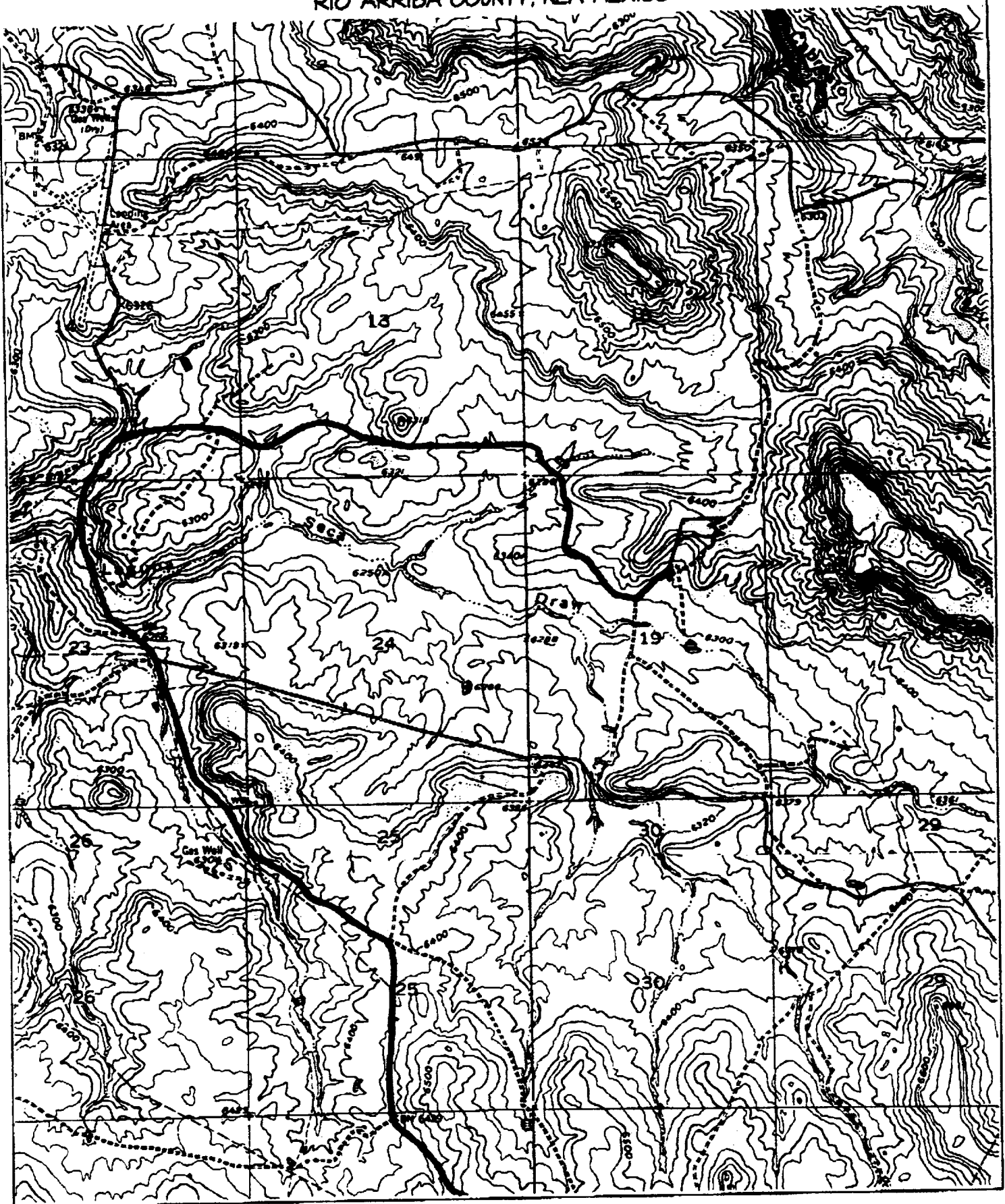
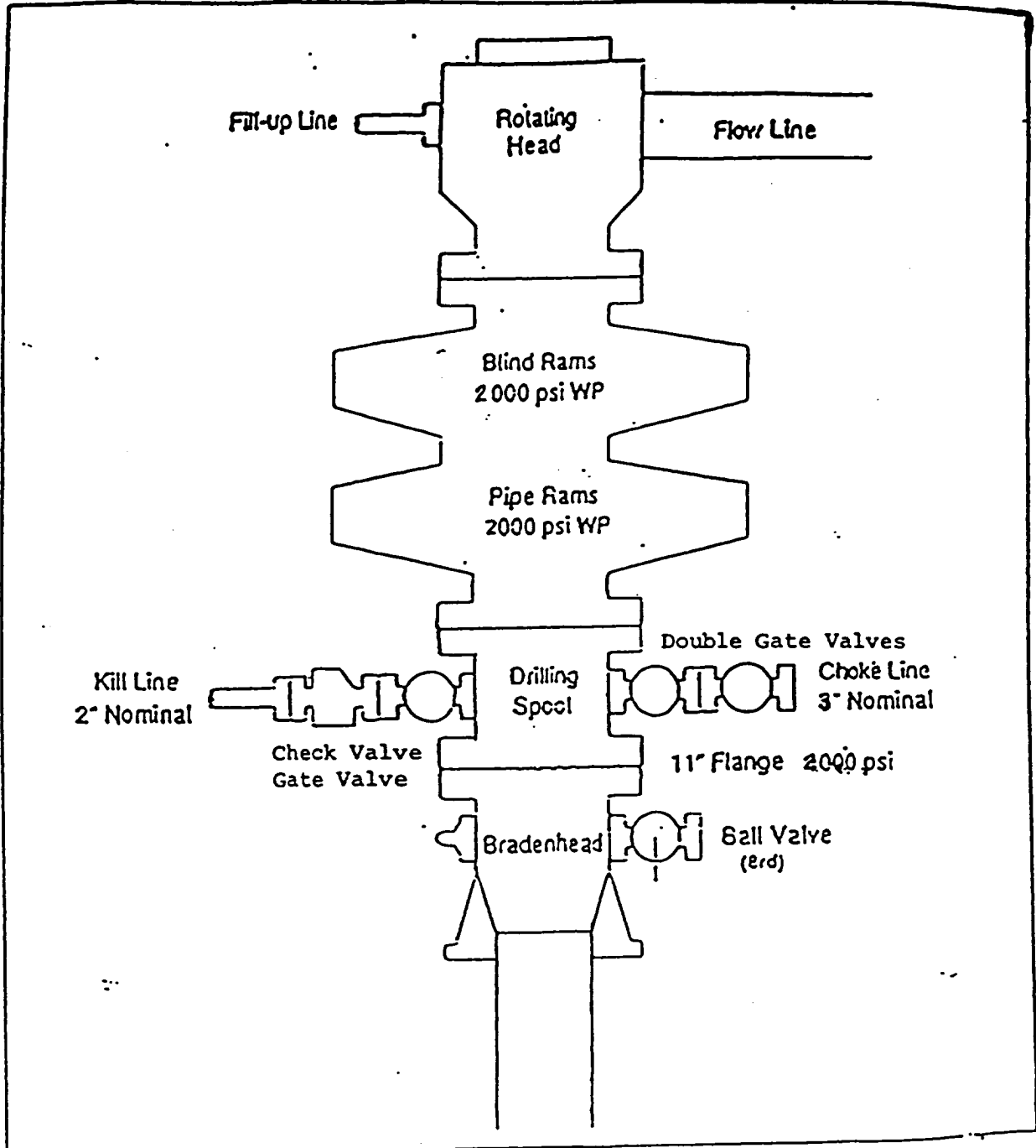


EXHIBIT 1

BOP STACK ARRANGEMENT



All ram type preventers and related equipment will be hydraulically tested at nipple-up and after any use under pressure to 1500 psi. The blind rams will be hydraulically activated and checked for operational readiness each time pipe is pulled out of the hole. All checks of the BOP stack and equipment will be noted on the daily drilling report. The BOP equipment will include a kelly cock with handle, floor safety valve with change overs for each tool joint in the string, and choke manifold all rated to 2000 psi.

EXHIBIT 2

Choke Manifold & Accumulator Schematic

