

UNITED STATES
DEPARTMENT OF THE INTERIOR
BUREAU OF LAND MANAGEMENT

ROW/APD

FORM APPROVED
Budget Bureau No. 1004-0136
Expires: February 28, 1995

APPLICATION FOR PERMIT TO DRILL OR DEEPEN

1a. Type of Work

DRILL ☒DEEPEN ☐

b. Type of Well

Oil Well ☐ Gas Well ☒ Other ☐Single Well ☒ Multiple Zone ☐

2. Name of Operator

Williams Production Company

3. Address and Telephone No.

P.O. Box 3102, MS 37-2, Tulsa, OK. 74101

4. Location of Well (Footages)

At Surface

2035' FSL 1725' FWL

proposed prod. zone

14. Distance in Miles and Directions from Nearest Town or Post Office

Approximately 22.3 miles east of Navajo Dam Post Office (straight line)

15. Distance from Proposed (Also to nearest drlg. unit line, if any)
Location to Nearest

Property or Lease Line, Ft 1725'

16. No. of Acres in Lease

1920. acres

17. No. of Acres Assigned to This Well

320 acres, W/2

18. Distance from Proposed Location
to Nearest Well Drilling, Completed,
or Applied for, on this Lease, FT 225'

19. Proposed Depth

6476' KB -

20. Rotary or Cable Tools

Rotary

21. Elevations (Show whether DF, RT, GR, etc)

6734' GR -

22. Approximate Date Work will Start

April 1, 2000

PROPOSED CASING AND CEMENTING PROGRAM

SIZE OF HOLE	SIZE & GRADE OF CASING	WEIGHT PER FOOT	SETTING DEPTH	QUANTITY OF CEMENT
12-1/4"	9-5/8"	36#	250'	130 sx-176 cu ft Type III
8-3/4"	7"	20#	4111'	475 sx-994 cu ft Lite 65/35 175 sx-242 Cu ft-Type III
6-1/4"	4-1/2"	10.5#	4011' - 6476' -	80 sx-116-cuft 180 sx-263cuft Poz/Class H 50/50

Williams Exploration & Production proposes to drill a vertical well to develop the Blanco - Mesa Verde Formation in the described location above, and in accordance with the attached Operation and Surface Use plans. **The surface is under the jurisdiction of the U.S. Forest Service, Carson National Forest.** Independent Contract Archaeology has surveyed the proposed location for Cultural Resources, and the report has been submitted to the Forest Service for review.

This APD also is serving as an application to obtain an on-lease right-of-way from the Forest Service for the road and pipeline. This well would utilize an existing access road for the Rosa Unit Well #270 and would not require a new access road (see Pipeline & Well Plats #3 and #4). The proposed 225-foot long pipeline would tie into Williams Gathering System on the Rosa Unit Well #270 (see the attached Pipeline Plat Map # 4).

This action is subject to technical and procedural review pursuant to 43 CFR 3165.3 and appeal pursuant to 43 CFR 3165.4.

DRILLING OPERATIONS AUTHORIZED ARE
SUBJECT TO COMPLIANCE WITH ATTACHED
"GENERAL REQUIREMENTS"

24. I hereby certify that the information contained in this proposal to deepen, give present productive zone and proposed new productive zone.
Signed Steve Nelson Title Agent

COPIES: BLM+4, WELL FILE+1
Date March 6, 2000

(This space for Federal or State office use)

Permit No.

Approval Date

Application approval does not warrant or certify that applicant holds legal or equitable title to those rights in the subject lease which would entitle the applicant to conduct operations thereon.
Conditions of approval, if any

/s/ Jim Lovato

NMOC

JUN 21 2000

APPROVED BY

TITLE

DATE

District I
PO Box 1980, Hobbs, NM 88241-1980

District II
PO Drawer DD, Artesia, NM 88211-0719

District III
1000 Rio Brazos Rd., Aztec, NM 87410

District IV
PO Box 2088, Santa Fe, NM 87504-2088

State of New Mexico
Energy, Minerals & Natural Resources Department

OIL CONSERVATION DIVISION
PO Box 2088
Santa Fe, NM 87504-2088

Form C-102
Revised February 21, 1994
Instructions on back
Submit to Appropriate District Office
State Lease - 4 Copies
Fee Lease - 3 Copies

☐ AMENDED REPORT

WELL LOCATION AND ACREAGE DEDICATION PLAT

*API Number 30-039-26397		*Pool Code 72319 -	*Pool Name Blanco - MV -
*Property Code 17033	*Property Name ROSA UNIT		*Well Number 188
*GRID No. 120782	*Operator Name WILLIAMS PRODUCTION COMPANY		*Elevation 6734'

¹⁰ Surface Location

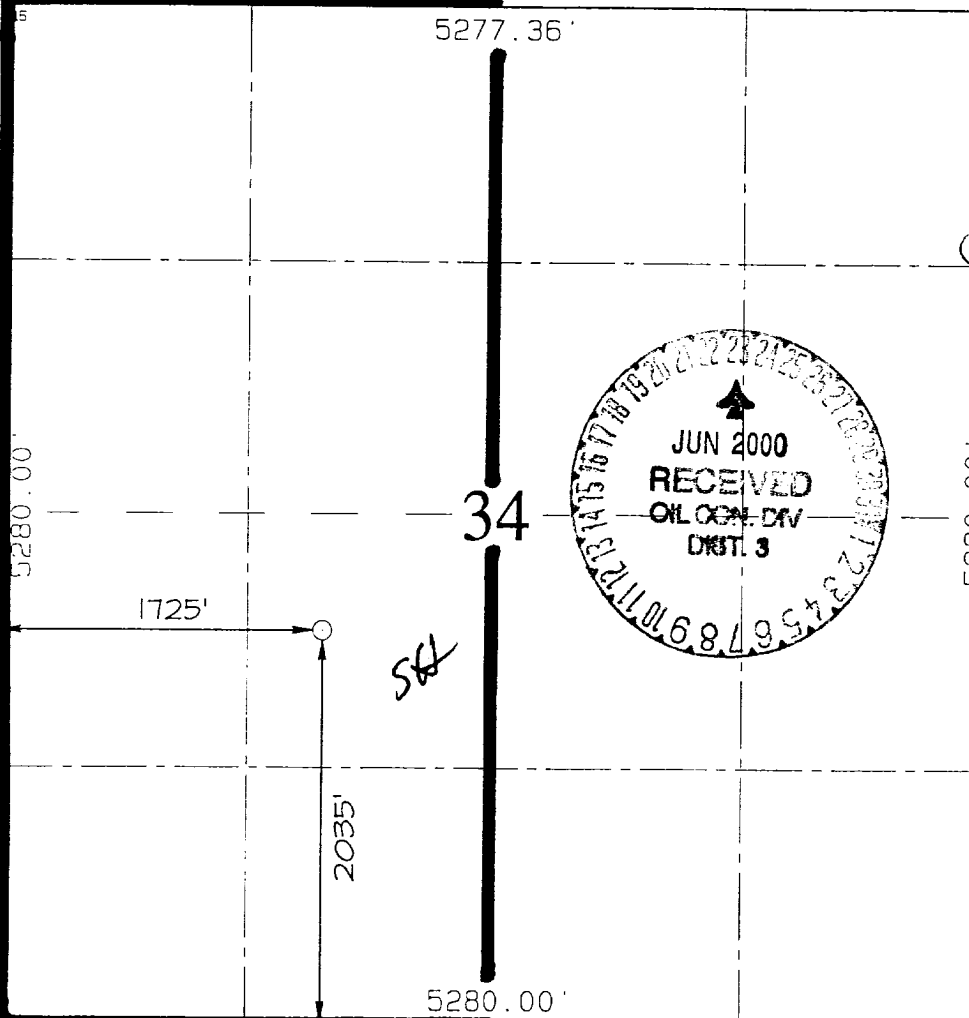
UL or lot no. K	Section 34	Township 31N	Range 5W	Lot Idn	Feet from the 2035	North/South line SOUTH	Feet from the 1725	East/West line WEST	County RIO ARriba
---------------------------	----------------------	------------------------	--------------------	---------	------------------------------	----------------------------------	------------------------------	-------------------------------	-----------------------------

¹¹ Bottom Hole Location If Different From Surface

UL or lot no.	Section	Township	Range	Lot Idn	Feet from the	North/South line	Feet from the	East/West line	County
---------------	---------	----------	-------	---------	---------------	------------------	---------------	----------------	--------

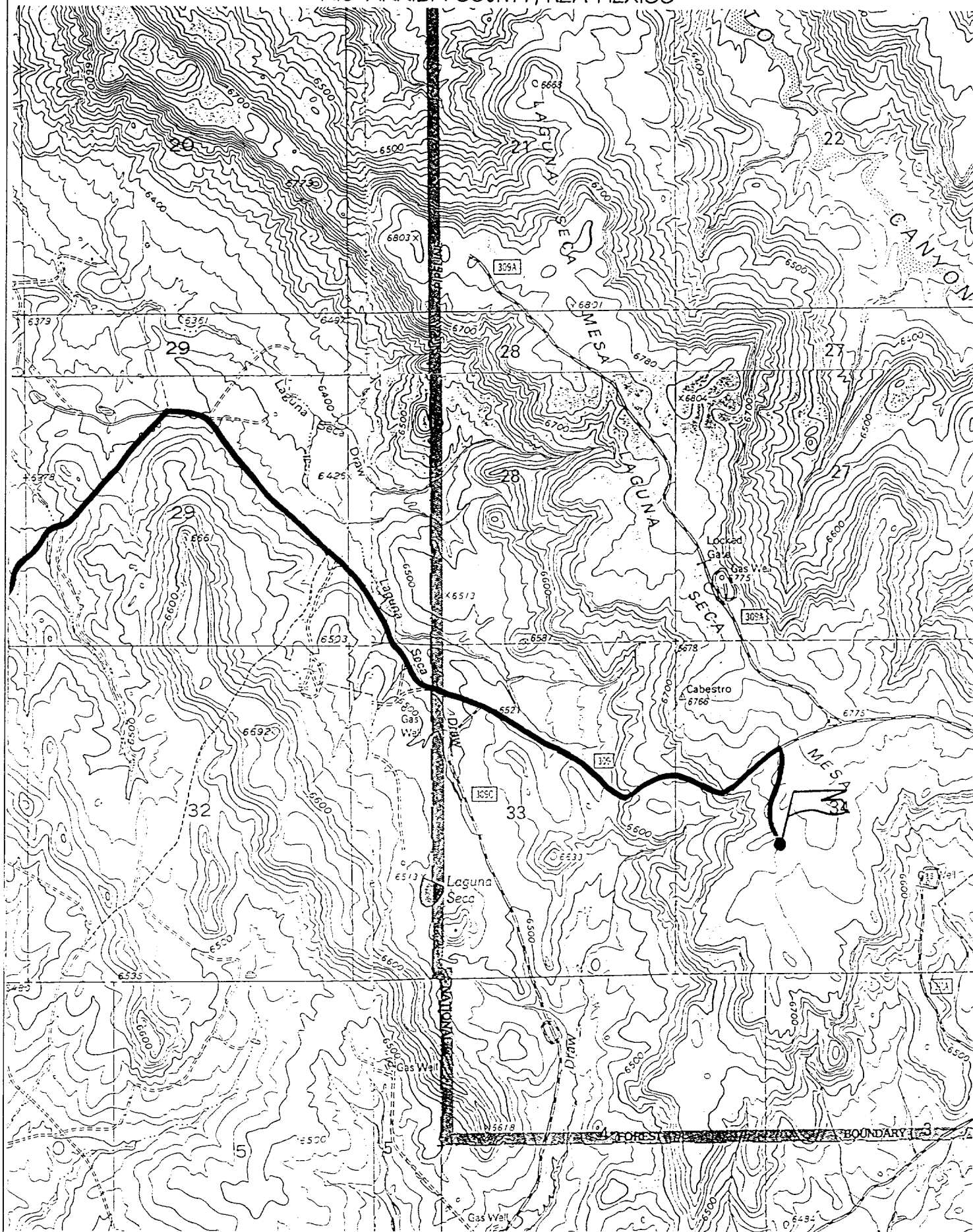
¹² Dedicated Acres 320 - W/2	¹³ Joint or Infill I	¹⁴ Consolidation Code U	¹⁵ Order No.
---	---	--	-------------------------

NO ALLOWABLE WILL BE ASSIGNED TO THIS COMPLETION UNTIL ALL INTERESTS HAVE BEEN CONSOLIDATED
OR A NON-STANDARD UNIT HAS BEEN APPROVED BY THE DIVISION

	<p>¹⁷ OPERATOR CERTIFICATION I hereby certify that the information contained herein is true and complete to the best of my knowledge and belief.</p> <p><i>Steve Nelson</i> Signature Steve Nelson Printed Name Agent, Nelson Consulting Title March 6, 2000 Date</p>
	<p>¹⁸ SURVEYOR CERTIFICATION I hereby certify that the well location shown on this plat was plotted from field notes of actual surveys made by me or under my supervision, and that the same is true and correct to the best of my belief.</p> <p>FEBRUARY 2, 2000 Date of Survey <i>Neale C. Edwards</i> Signature and Seal NEALE C. EDWARDS NEW MEXICO REGISTERED PROFESSIONAL SURVEYOR 6857 Certificate No. 6857</p>

WILLIAMS PRODUCTION COMPANY ROSA UNIT #188

2035' FSL & 1725' FWL, SECTION 34, T31N, R5W, N.M.P.M.
RIO ARriba COUNTY, NEW MEXICO





Exploration & Production
Operations Plan

DATE: 2/22/00

<u>WELLNAME:</u>	ROSA UNIT #188	<u>FIELD:</u>	Blanco MV
<u>LOCATION:</u>	NESW Sec.34, T31N, R5W Rio Arriba Co., NM	<u>SURFACE:</u>	Forest
<u>ELEVATION:</u>	6734' GR	<u>MINERALS:</u>	Federal
<u>TOTAL DEPTH:</u>	6476'	<u>LEASE #</u>	SF-078773

I. GEOLOGY: Surface formation - San Jose

A. FORMATION TOPS:

Ojo Alamo	2866'	Cliff House	5761'
Kirkland	3001'	Menefee	5816'
Fruitland	3406'	Point Lookout	6026'
Pictured Cliffs	3636'	Mancos	6331'
Lewis	3881'	Total Depth	6476'

B. LOGGING PROGRAM: 8-3/4" IND/GR/Temp log from TD to surface. CDL interval selected by onsite geologist. 6-1/4" IND/GR/Temp log from TD to Intermediate TD. CDL interval selected by onsite geologist.

C. NATURAL GAUGES: Gauge any noticeable increases in gas flow. Record all gauges in Tour book and on morning reports.

II. DRILLING

A. MUD PROGRAM: Clear water with benex to 7" casing point. LSND to log and run pipe.

B. BOP TESTING: While drill pipe is in use, the pipe rams will be tested not less than once each day. The blind rams will be tested once each trip. The drum brakes will inspected and tested each tour. All tests and inspections will be recorded in the tour book as to time and results.

III. MATERIALS

A. CASING PROGRAM:

<u>CASING TYPE</u>	<u>HOLE SIZE</u>	<u>DEPTH</u>	<u>CASING SIZE</u>	<u>WT. & GRADE</u>
Surface	12-1/4"	250'	9-5/8"	36# K-55
Intermediate	8-3/4"	4111'	7"	20# K-55
Prod. Liner	6-1/4"	4011'-6476'	4-1/2"	10.5# K-55

B. FLOAT EQUIPMENT:

1. SURFACE CASING: 9-5/8" notched regular pattern guide shoe.