

District I
PO Box 1980, Hobbs, NM 88241-1980
District II
811 S. 1st Street, Artesia, NM 88210-2834
District III
1000 Rio Brazos Rd., Aztec, NM 87410
District IV
2040 South Pacheco, Santa Fe, NM 87505

State of New Mexico
Energy, Minerals & Natural Resources Department

OIL CONSERVATION DIVISION
2040 South Pacheco
Santa Fe, NM 87505

Form C-101

Revised October 18, 1994

Instructions on back

Submit to Appropriate District Office

State Lease - 6 Copies

Fee Lease - 5 Copies

☐ AMENDED REPORT

APPLICATION FOR PERMIT TO DRILL, RE-ENTER, DEEPEN, PLUGBACK, OR ADD A ZONE

¹ Operator name and Address Phillips Petroleum Company 5525 Highway 64, NBU 3004 Farmington, NM 87401		² OGRID Number 017654
⁴ Property Code 009259	⁵ Property Name San Juan 31-6 Unit	³ API Number 39-26433
		⁶ Well No. 42M

⁷ Surface Location									
UL or lot no.	Section	Township	Range	Lot. Idn	Feet from the	North/South Line	Feet from the	East/West line	County
C	36	31N	6W		1090'	North	1870'	West	Rio Arriba

⁸ Proposed Bottom Hole Location If Different From Surface									
UL or lot no.	Section	Township	Range	Lot. Idn	Feet from the	North/South Line	Feet from the	East/West line	County
C									
⁹ Proposed Pool 1 Basin Dakota 71599					¹⁰ Proposed Pool 2 Blanco Mesaverde 72319				

¹¹ Work Type Code N	¹² Well Type Code M	¹³ Cable/Rotary R	¹⁴ Lease Type Code S	¹⁵ Ground Level Elevation 6438'
¹⁶ Multiple M	¹⁷ Proposed Depth 8035'	¹⁸ Formation Dakota	¹⁹ Contractor 4CAT - Key Energy	²⁰ Spud Date 4th Qtr 2000

²¹ Proposed Casing and Cement Program					
Hole Size	Casing Size	Casing weight/foot	Setting Depth	Sacks of Cement	Estimated TOC
12-1/4"	9-5/8"	36#, J/K-55	320'	159 sx Type 3	Surface
8-3/4"	7"	20#, J/K-55	3835'	L-461 sx Type 3	Surface
				T-50 sx Type 3	
6-1/4"	4-1/2"	11.6#, I-80	8035'	330 sx C1 H	**

²² Describe the proposed program. If this application is to DEEPEN or PLUG BACK give the data on the present productive zone and proposed new productive zone. Describe the blowout prevention program, if any. Use additional sheets if necessary.

* The surface casing will be set at a minimum of 322, but could be set deeper if required to maintain hole stability.

** The production casing cement is calculated to cover the openhole interval with 60% excess and annular volume 100' within intermediate casing shoe. Depending on hole conditions, the well may be cemented in a single stage or two staged.

See attached for details on the BOP equipment and Cathodic Protection.

²³ I hereby certify that the information given above is true and complete to the best of my knowledge and belief. Signature: <u>Monica D. Rodahl</u> Printed name: Monica D. Rodahl Title: Regulatory Assistant	Date: 04/04/00 Phone: 599-3480	OIL CONSERVATION DIVISION Approved by: <u>Charlie T. Lerner</u> Title: DEPUTY OIL & GAS INSPECTOR, DIST. IV Approval Date: <u>APR 10 2000</u> Expiration Date: <u>APR 10 2001</u>
---	-----------------------------------	---

District I
PO Box 1980, Hobbs, NM 88241-1980
District II
811 South First, Artesia, NM 88210
District III
1000 Rio Brazos Rd., Aztec, NM 87410
District IV
2040 South Pacheco, Santa Fe, NM 87505

State of New Mexico
Energy, Minerals & Natural Resources Department

OIL CONSERVATION DIVISION
2040 South Pacheco
Santa Fe, NM 87505

Form C-102
Revised October 18, 1994
Instructions on back
Submit to Appropriate District Office
State Lease - 4 Copies
Fee Lease - 3 Copies

☐ AMENDED REPORT

WELL LOCATION AND ACREAGE DEDICATION PLAT

¹ APN Number 30-039-26433		² Pool Code 71599	³ Pool Name Basin Dakota
⁴ Property Code 009259	⁵ Property Name SAN JUAN 31-6 UNIT		⁶ Well Number 42M
⁷ OGRID No. 017654	⁸ Operator Name PHILLIPS PETROLEUM COMPANY		⁹ Elevation 6438'

¹⁰ Surface Location

UL or lot no.	Section	Township	Range	Lot Idn	Feet from the	North/South line	Feet from the	East/West line	County
C	36	31N	6W		1090'	NORTH	1870'	WEST	RIO ARRIBA

¹¹ Bottom Hole Location If Different From Surface

UL or lot no.	Section	Township	Range	Lot Idn	Feet from the	North/South line	Feet from the	East/West line	County
C									

¹² Dedicated Acres	¹³ Joint or Infill	¹⁴ Consolidation Code	¹⁵ Order No.
272.56 N/2	I	U	

NO ALLOWABLE WILL BE ASSIGNED TO THIS COMPLETION UNTIL ALL INTERESTS HAVE BEEN CONSOLIDATED OR A NON-STANDARD UNIT HAS BEEN APPROVED BY THE DIVISION

¹⁶		¹⁷ OPERATOR CERTIFICATION I hereby certify that the information contained herein is true and complete to the best of my knowledge and belief <i>Monica D. Rodahl</i> Signature Monica D. Rodahl Printed Name Regulatory Assistant Title March 31, 2000 Date
¹⁸ SURVEYOR CERTIFICATION I hereby certify that the well location shown on this plat was plotted from field notes of actual surveys made by me or under my supervision, and that the same is true and correct to the best of my belief. 12/14/99 Date of Survey Signature and Seal of Professional Surveyer: 		Certificate Number

WEST

District I
PO Box 1980, Hobbs, NM 88241-1980
District II
811 South First, Artesia, NM 88210
District III
1000 Rio Brazos Rd., Aztec, NM 87410
District IV
2040 South Pacheco, Santa Fe, NM 87505

State of New Mexico
Energy, Minerals & Natural Resources Department

OIL CONSERVATION DIVISION
2040 South Pacheco
Santa Fe, NM 87505

Form C-102
Revised October 18, 1994
Instructions on back
Submit to Appropriate District Office
State Lease - 4 Copies
Fee Lease - 3 Copies

☐ AMENDED REPORT

WELL LOCATION AND ACREAGE DEDICATION PLAT

¹ APN Number 30-039-264-33		¹ Pool Code 72319	¹ Pool Name Blanco Mesaverde
⁴ Property Code 009259	⁵ Property Name SAN JUAN 31-6 UNIT		⁸ Well Number 42M
⁷ OGRID No. 017654	⁶ Operator Name PHILLIPS PETROLEUM COMPANY		⁹ Elevation 6438'

¹⁰ Surface Location

UL or lot no. C	Section 36	Township 31N	Range 6W	Lot Idn	Feet from the 1090'	North/South line NORTH	Feet from the 1870'	East/West line WEST	County RIO ARriba
--------------------	---------------	-----------------	-------------	---------	------------------------	---------------------------	------------------------	------------------------	----------------------

¹¹ Bottom Hole Location If Different From Surface

UL or lot no. C	Section	Township	Range	Lot Idn	Feet from the	North/South line	Feet from the	East/West line	County
--------------------	---------	----------	-------	---------	---------------	------------------	---------------	----------------	--------

¹² Dedicated Acres 320 W/2	¹³ Joint or Infill I	¹⁴ Consolidation Code U	¹⁵ Order No.
--	------------------------------------	---------------------------------------	-------------------------

NO ALLOWABLE WILL BE ASSIGNED TO THIS COMPLETION UNTIL ALL INTERESTS HAVE BEEN CONSOLIDATED OR A NON-STANDARD UNIT HAS BEEN APPROVED BY THE DIVISION

				<p>¹⁷ OPERATOR CERTIFICATION</p> <p>I hereby certify that the information contained herein is true and complete to the best of my knowledge and belief</p> <p>Signature Monica D. Rodahl</p> <p>Printed Name Monica D. Rodahl</p> <p>Title Regulatory Assistant</p> <p>Date March 31, 2000</p>	
<p>Section 36</p>				<p>¹⁸ SURVEYOR CERTIFICATION</p> <p>I hereby certify that the well location shown on this plat was plotted from field notes of actual surveys made by me or under my supervision, and that the same is true and correct to the best of my belief.</p> <p>12/14/99</p> <p>Date of Survey</p> <p>Signature and Seal of Professional Surveyor:</p> <p>Certificate Number</p>	

PHILLIPS PETROLEUM COMPANY

SAN JUAN 31-6 UNIT No. 42M

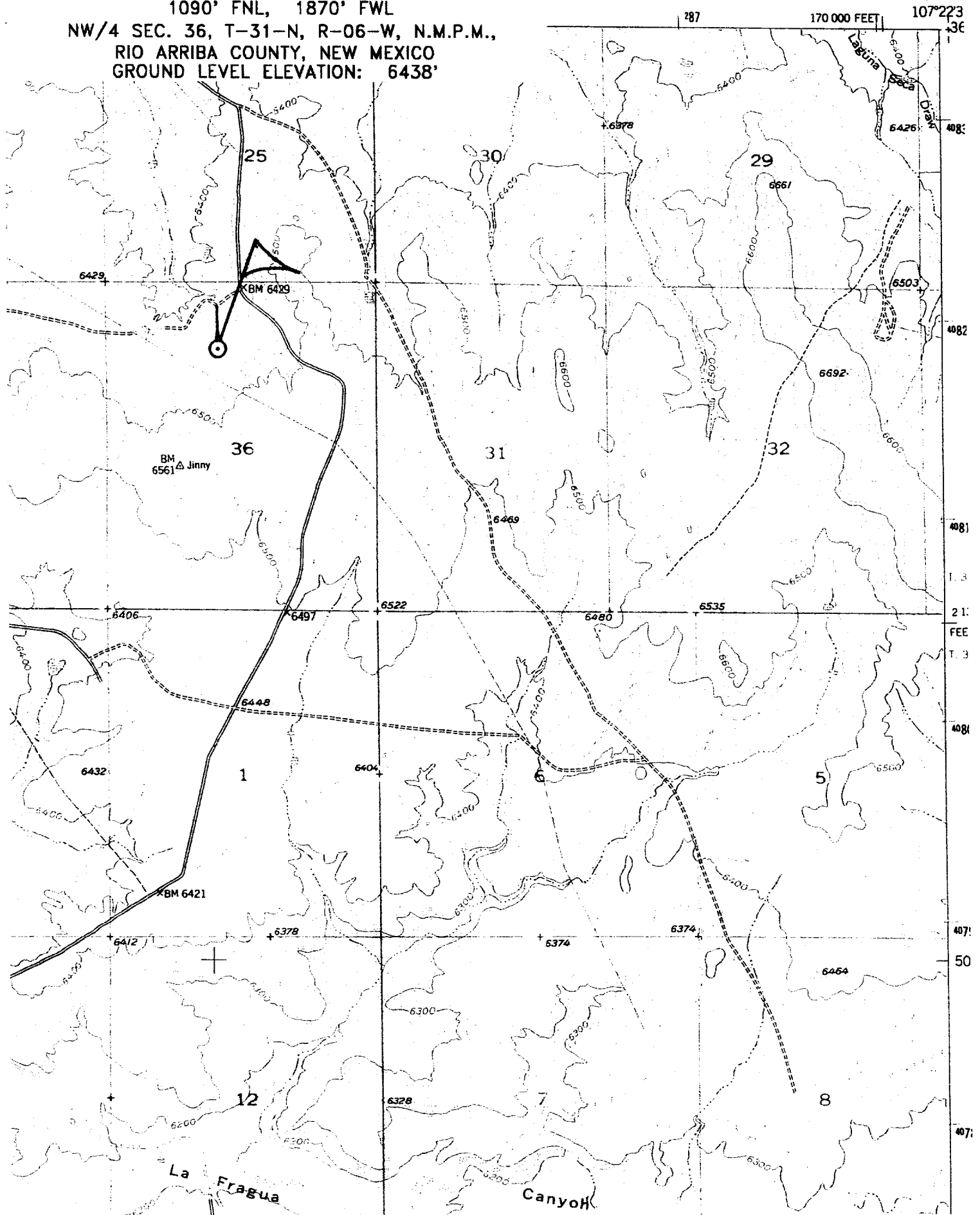
1090' FNL, 1870' FWL

NW/4 SEC. 36, T-31-N, R-06-W, N.M.P.M.,
RIO ARriba COUNTY, NEW MEXICO
GROUND LEVEL ELEVATION: 6438'

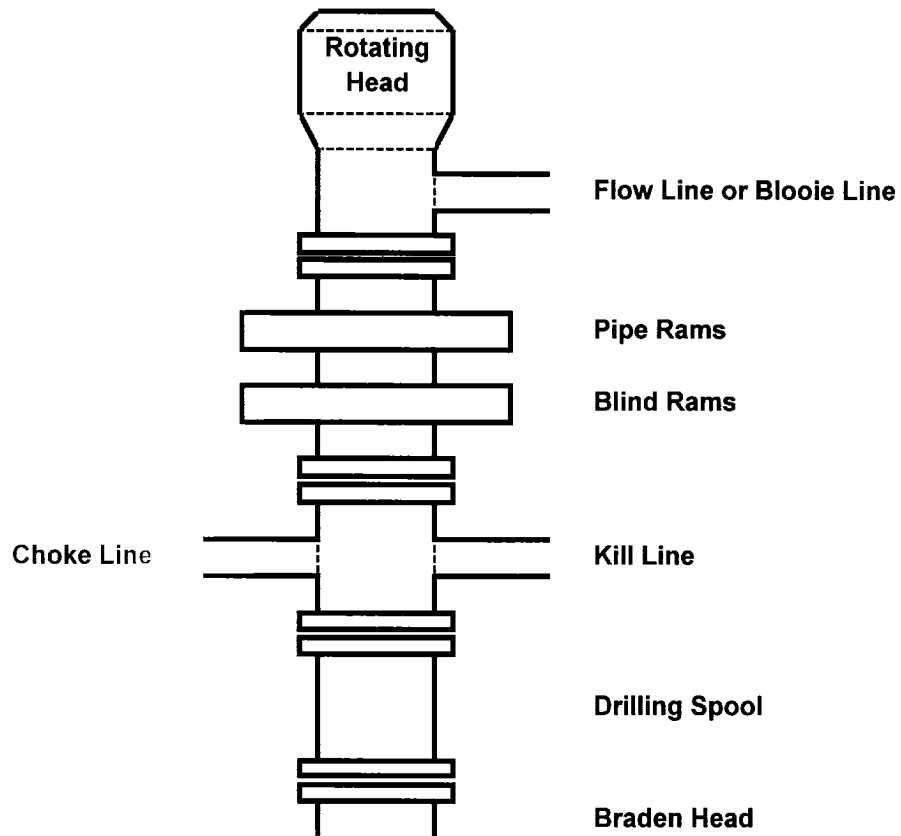
GOMEZ RANCH QUADRANGLE

NEW MEXICO-RIO ARriba CO.

7.5 MINUTE SERIES (TOPOGRAPHIC)



10" 3000 Psi BOP Stack for Gas Drilling



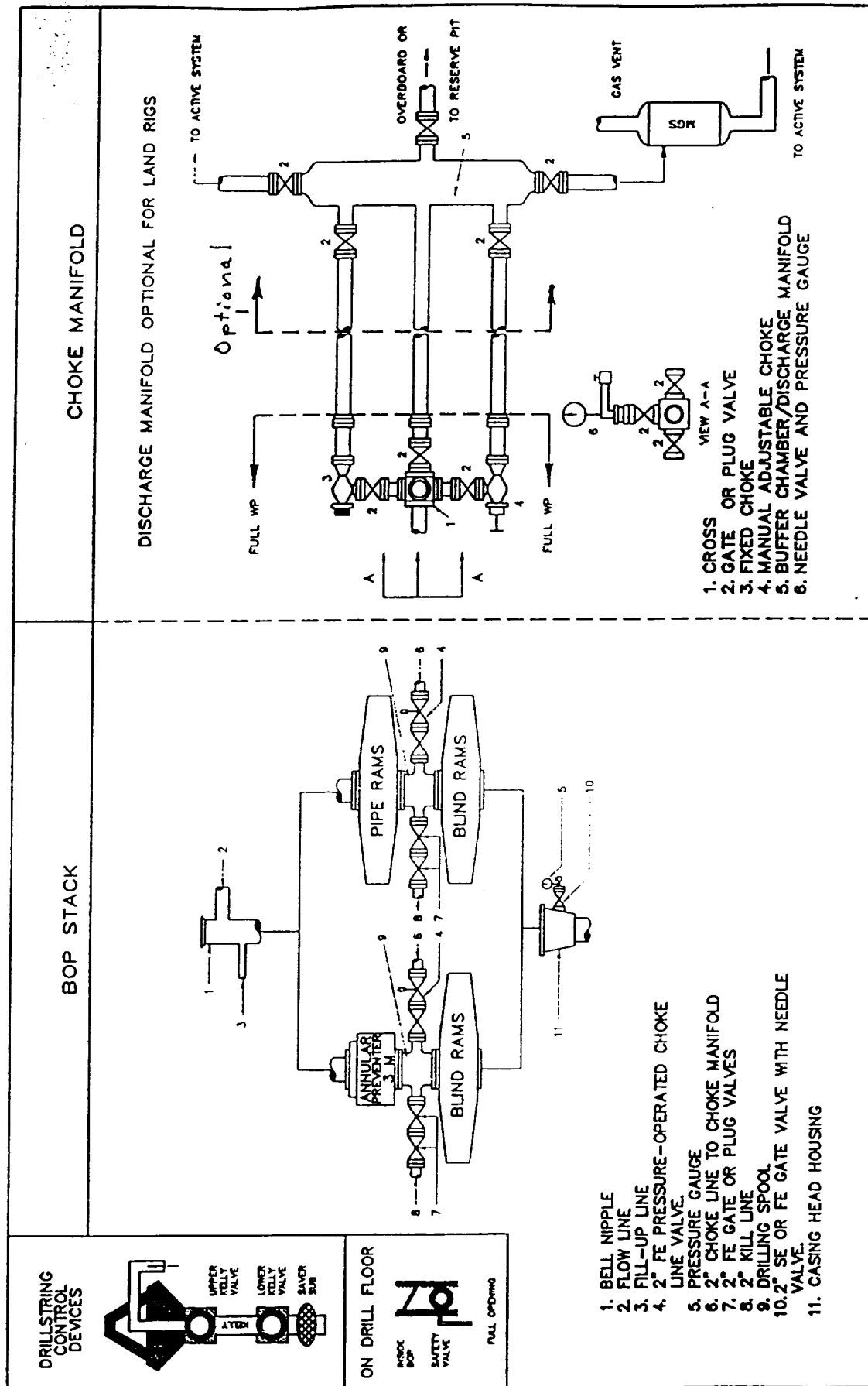


Fig. 2.4. Class 2 BOP and Choke Manifold.

San Juan 31-6 Unit #42M
E-347-40; Unit C, 1090' FNL & 1870' FWL
Section 36, T31N, R6W; Rio Arriba County, NM

Cathodic Protection

Phillips proposes to drill a cathodic protection deep well groundbed for the subject well. Will drill a 6-7/8" hole to an anticipated minimum depth of 300' (maximum depth of 500'). Cement plugs will not be used unless more than one water zone is encountered. Prior drilling history for the area indicates only one zone to that depth. If more than one water zone is encountered, notification will be made and details of cement and casing will be provided.

All drilling activity will remain on existing well pad and a Farmington based company will be doing the drilling for Phillips.