

District I  
PO Box 1980, Hobbs, NM 88241-1980  
District II  
811 S. 1st Street, Artesia, NM 88210-2834  
District III  
1000 Rio Brazos Rd., Aztec, NM 87410  
District IV  
2040 South Pacheco, Santa Fe, NM 87505

State of New Mexico  
Energy, Minerals & Natural Resources Department

OIL CONSERVATION DIVISION  
2040 South Pacheco  
Santa Fe, NM 87505

Form C-101

Revised October 18, 1994

Instructions on back

Submit to Appropriate District Office

State Lease - 6 Copies

Fee Lease - 5 Copies

☐ AMENDED REPORT

APPLICATION FOR PERMIT TO DRILL, RE-ENTER, DEEPEN, PLUGBACK, OR ADD A ZONE

<sup>1</sup> Operator name and Address Phillips Petroleum Company 5525 Highway 64, NBU 3004 Farmington, NM 87401		<sup>2</sup> OGRID Number 017654
<sup>4</sup> Property Code 009259	<sup>5</sup> Property Name San Juan 31-6 Unit	<sup>3</sup> API Number 30-0 39-26434
		<sup>6</sup> Well No. 37M

<sup>7</sup> Surface Location									
UL or lot no. M	Section 36	Township 31N	Range 6W	Lot. Idn	Feet from the 242'	North/South Line South	Feet from the 1175'	East/West line West	County Rio Arriba

<sup>8</sup> Proposed Bottom Hole Location If Different From Surface

UL or lot no. M	Section	Township	Range	Lot. Idn	Feet from the	North/South Line	Feet from the	East/West line	County
<sup>9</sup> Proposed Pool 1 Basin Dakota 71599					<sup>10</sup> Proposed Pool 2 Blanco Mesaverde 72319				

<sup>11</sup> Work Type Code N	<sup>12</sup> Well Type Code M	<sup>13</sup> Cable/Rotary R	<sup>14</sup> Lease Type Code S	<sup>15</sup> Ground Level Elevation 6430'
<sup>16</sup> Multiple Y	<sup>17</sup> Proposed Depth 7972'	<sup>18</sup> Formation Dakota	<sup>19</sup> Contractor 4CAT - Key Energy	<sup>20</sup> Spud Date 4th Qtr 2000

<sup>21</sup> Proposed Casing and Cement Program

Hole Size	Casing Size	Casing weight/foot	Setting Depth	Sacks of Cement	Estimated TOC
12-1/4"	9-5/8"	36#, J/K-55	320'*	159 sx Type 3	Surface
8-3/4"	7"	20#, J/K-55	3777'	L-453 sx Type 3	Surface
				T-50 sx Type 3	
6-1/4"	4-1/2"	11.6#, I-80	7972'	330 sx C1 H	**

<sup>22</sup> Describe the proposed program. If this application is to DEEPEN or PLUG BACK give the data on the present productive zone and proposed new productive zone. Describe the blowout prevention program, if any. Use additional sheets if necessary

- \* The surface casing will be set at a minimum of 320', but could be set deeper if required to maintain hole stability.
- \*\* The production casing cement is calculated to cover the openhole interval with 60% excess and annular volume 100' within intermediate casing shoe. Depending on hole conditions, the well may be cemented in a single stage or two staged.

See attached for details on the BOP equipment and Cathodic Protection.

<sup>23</sup> I hereby certify that the information given above is true and complete to the best of my knowledge and belief.

Signature: Monica D. Rodahl  
Printed name: Monica D. Rodahl Date: 04/04/00  
Title: Regulatory Assistant Phone: 599-3480

OIL CONSERVATION DIVISION

Approved by: Charlie T. Lewis  
Title: DEPUTY OIL & GAS INSPECTOR, DIST. 43  
Approval Date: APR 10 2000 Expiration Date: APR 10 2001

Hold C104 for NSL

District I  
PO Box 1980, Hobbs, NM 88241-1980  
District II  
PO Drawer DD, Artesia, NM 88211-0719  
District III  
1000 Rio Brazos Rd., Aztec, NM 87410  
District IV  
PO Box 2088, Santa Fe, NM 87504-2088

State of New Mexico  
Energy, Minerals & Natural Resources Department

OIL CONSERVATION DIVISION  
PO Box 2088  
Santa Fe, NM 87504-2088

Form C-102  
Revised February 21, 1994  
Instructions on back  
Submit to Appropriate District Office  
State Lease - 4 Copies  
Fee Lease - 3 Copies

☐ AMENDED REPORT

WELL LOCATION AND/ACREAGE DEDICATION PLAT

API Number 30-039-26431		Pool Code 71599	Pool Name Basin Dakota
Property Code 009259	Property Name SAN JUAN 31-6 UNIT		Well Number 37M
OGRID No. 017654	Operator Name PHILLIPS PETROLEUM COMPANY		Elevation 6430'

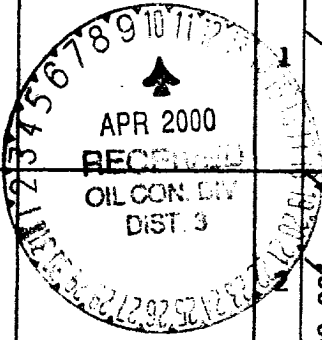
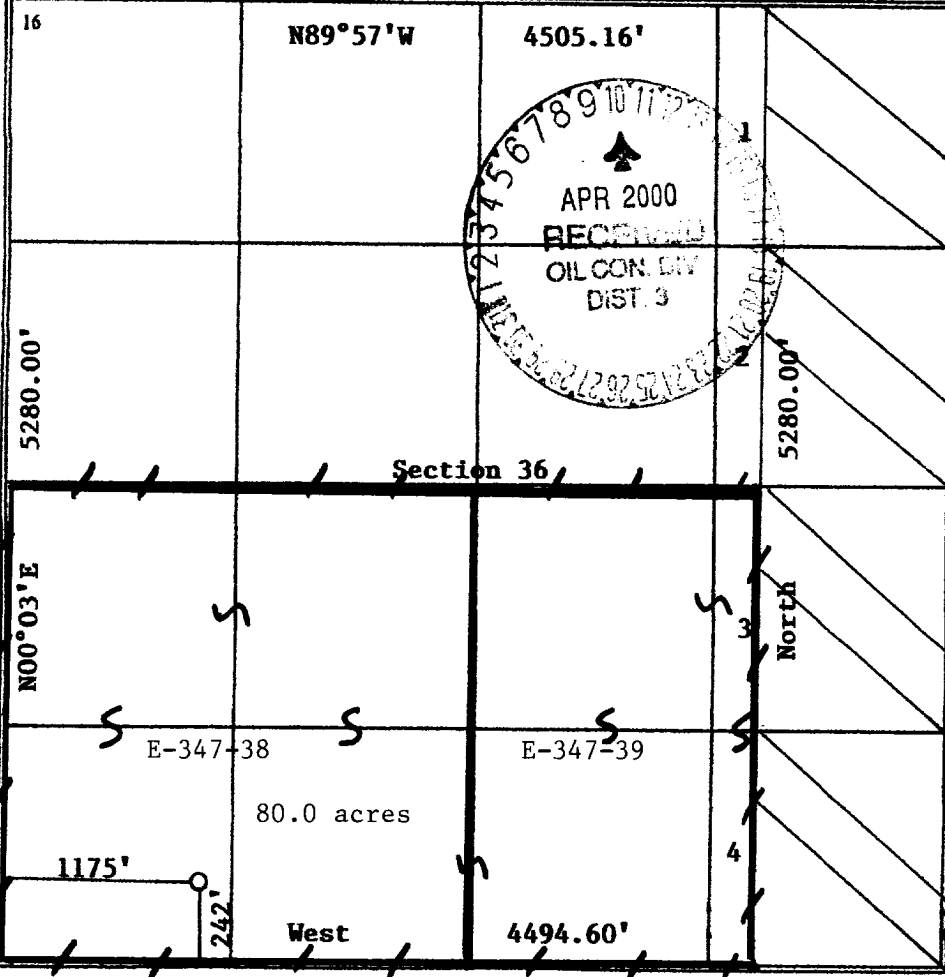
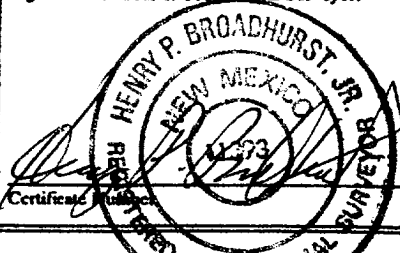
<sup>10</sup> Surface Location

UL or lot no.	Section	Township	Range	Lot Idn	Feet from the	North/South line	Feet from the	East/West line	County
M	36	31N	6W		242'	SOUTH	1175'	WEST	RIO ARriba

<sup>11</sup> Bottom Hole Location If Different From Surface

UL or lot no.	Section	Township	Range	Lot Idn	Feet from the	North/South line	Feet from the	East/West line	County
M									
<sup>12</sup> Dedicated Acres 272.48 S/2		<sup>13</sup> Joint or Infill I	<sup>14</sup> Consolidation Code U		<sup>15</sup> Order No.				

NO ALLOWABLE WILL BE ASSIGNED TO THIS COMPLETION UNTIL ALL INTERESTS HAVE BEEN CONSOLIDATED  
OR A NON-STANDARD UNIT HAS BEEN APPROVED BY THE DIVISION

16	N89°57'W	4505.16'			<b><sup>17</sup> OPERATOR CERTIFICATION</b> I hereby certify that the information contained herein is true and complete to the best of my knowledge and belief.  Monica D. Rodahl Signature Monica D. Rodahl Printed Name Regulatory Assistant Title March 31, 2000 Date
					<b><sup>18</sup> SURVEYOR CERTIFICATION</b> I hereby certify that the well location shown on this plat was plotted from field notes of actual surveys made by me or under my supervision, and that the same is true and correct to the best of my belief.  02/18/2000 Date of Survey Signature and Seal of Professional Surveyor: 

District I  
PO Box 1980, Hobbs, NM 88241-1980  
District II  
PO Drawer DD, Artesia, NM 88211-0719  
District III  
1000 Rio Brazos Rd., Aztec, NM 87410  
District IV  
PO Box 2088, Santa Fe, NM 87504-2088

State of New Mexico  
Energy, Minerals & Natural Resources Department

OIL CONSERVATION DIVISION  
PO Box 2088  
Santa Fe, NM 87504-2088

Form C-102  
Revised February 21, 1994  
Instructions on back  
Submit to Appropriate District Office  
State Lease - 4 Copies  
Fee Lease - 3 Copies

☐ AMENDED REPORT

WELL LOCATION AND/ACREAGE DEDICATION PLAT

API Number 30-039-26434		Pool Code 72319	Pool Name Blanco Mesaverde
Property Code 009259	Property Name SAN JUAN 31-6 UNIT		Well Number 37M
GRID No. 017654	Operator Name PHILLIPS PETROLEUM COMPANY		Elevation 6430'

10 Surface Location

UL or lot no.	Section	Township	Range	Lot Idn	Feet from the	North/South line	Feet from the	East/West line	County
M	36	31N	6W		242'	SOUTH	1175'	WEST	RIO ARriba

11 Bottom Hole Location If Different From Surface

UL or lot no.	Section	Township	Range	Lot Idn	Feet from the	North/South line	Feet from the	East/West line	County
M									

Dedicated Acres 320 W/2	Joint or Infill I	Consolidation Code U	Order No.
----------------------------	----------------------	-------------------------	-----------

NO ALLOWABLE WILL BE ASSIGNED TO THIS COMPLETION UNTIL ALL INTERESTS HAVE BEEN CONSOLIDATED  
OR A NON-STANDARD UNIT HAS BEEN APPROVED BY THE DIVISION

<p>Section 36</p> <p>80.0 acres</p> <p>West</p> <p>4494.60'</p>	<b>17 OPERATOR CERTIFICATION</b> I hereby certify that the information contained herein is true and complete to the best of my knowledge and belief.  Monica D. Rodahl Signature Monica D. Rodahl Printed Name Regulatory Assistant Title March 31, 2000 Date	
	<b>18 SURVEYOR CERTIFICATION</b> I hereby certify that the well location shown on this plat was plotted from field notes of actual surveys made by me or under my supervision, and that the same is true and correct to the best of my belief.  02/18/2000 Date of Survey Signature and Seal of Professional Surveyer:  HENRY P. BROADHURST, JR. NEW MEXICO REGISTERED SURVEYOR 14293	

# PHILLIPS PETROLEUM COMPANY

SAN JUAN 31-6 UNIT No. 37M

242' FSL, 1175' FWL

SW/4 SEC. 36, T-31-N, R-06-W, N.M.P.M.,

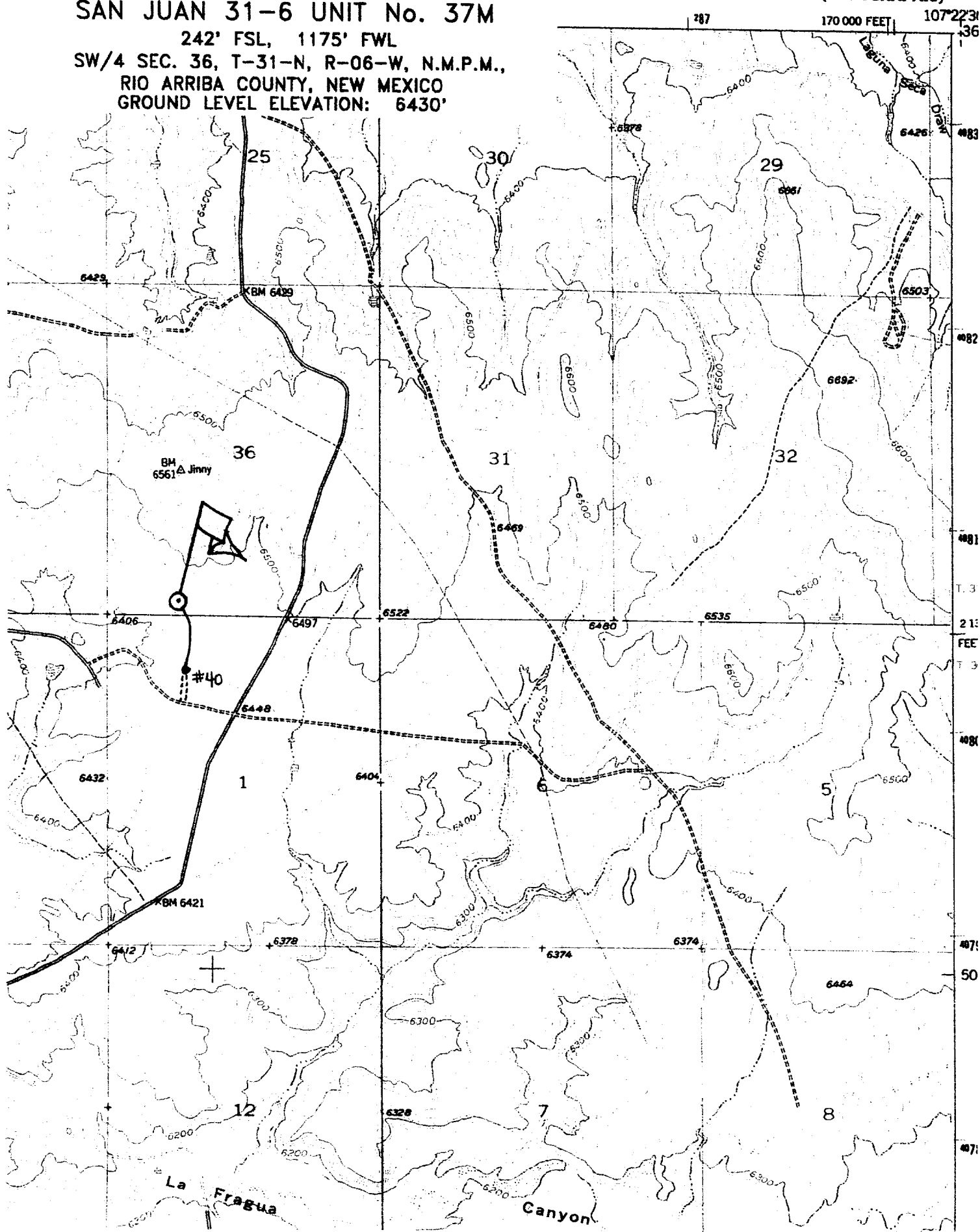
RIO ARRIBA COUNTY, NEW MEXICO

GROUND LEVEL ELEVATION: 6430'

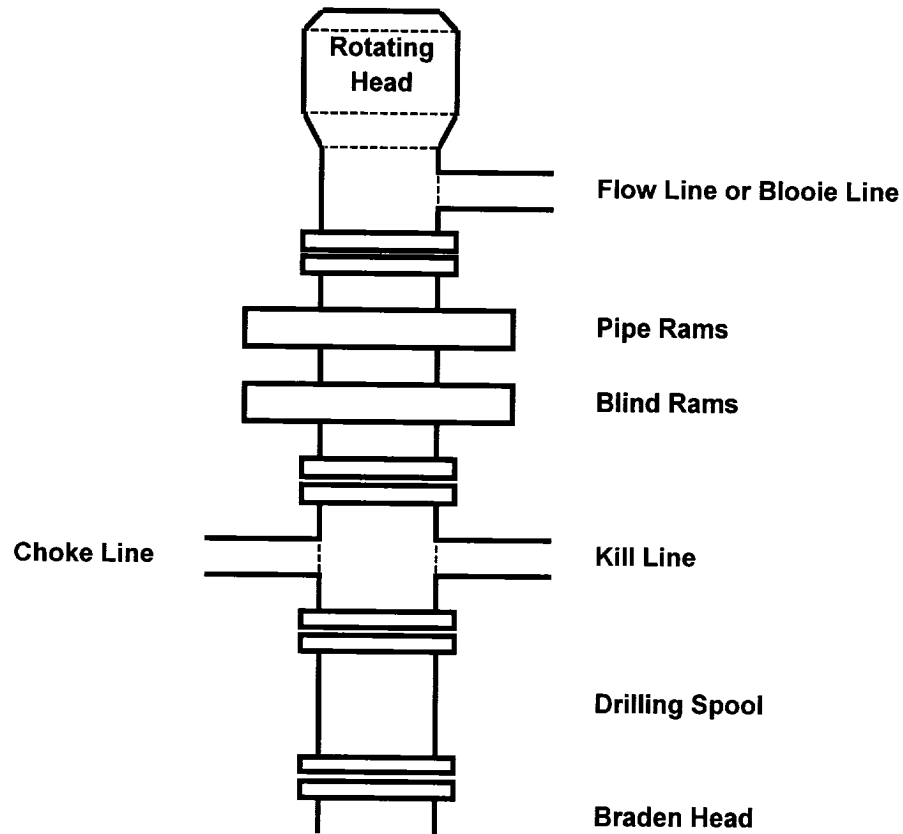
GOMEZ RANCH QUADRANGLE

NEW MEXICO-RIO ARRIBA CO.

7.5 MINUTE SERIES (TOPOGRAPHIC)



**10" 3000 Psi BOP Stack for Gas Drilling**



# ATTACHMENT 1

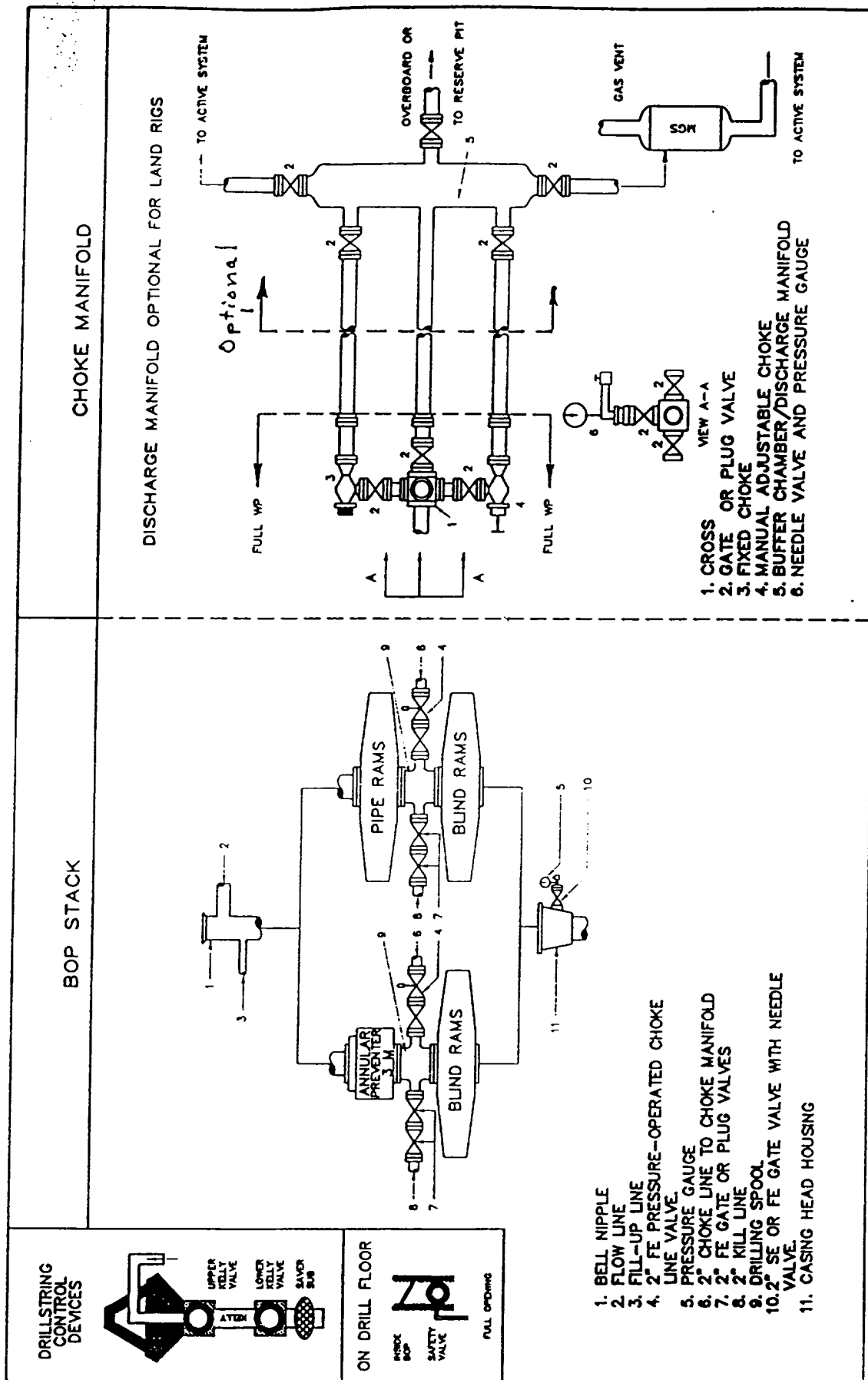


Fig. 2.4. Class 2 BOP and Choke Manifold.

**San Juan 31-6 Unit #37M  
E-347-40; Unit M, 242' FSL & 1175' FWL  
Section 36, T31N, R6W; Rio Arriba County, NM**

**Cathodic Protection**

Phillips proposes to drill a cathodic protection deep well groundbed for the subject well. Will drill a 6-7/8" hole to an anticipated minimum depth of 300' (maximum depth of 500'). Cement plugs will not be used unless more than one water zone is encountered. Prior drilling history for the area indicates only one zone to that depth. If more than one water zone is encountered, notification will be made and details of cement and casing will be provided.

All drilling activity will remain on existing well pad and a Farmington based company will be doing the drilling for Phillips.