

In Lieu of
Form 3160-5
(June 1990)

UNITED STATES
DEPARTMENT OF THE INTERIOR
BUREAU OF LAND MANAGEMENT

FORM APPROVED
Budget Bureau No. 1004-0135
Expires: March 31, 1993

SUNDRY NOTICES AND REPORTS ON WELLS

Do not use this form for proposals to drill or to deepen or reentry to a different reservoir. Use "APPLICATION FOR PERMIT--" for such proposals

5. Lease Designation and Serial No.
SF-078765

6. If Indian, Allottee or Tribe Name

SUBMIT IN TRIPLICATE

7. If Unit or CA, Agreement Designation
Rosa Unit

1. Type of Well
☐ Oil Well ☒ Gas Well ☐ Other

8. Well Name and No.
Rosa Unit No. 12B

2. Name of Operator
Williams Production Company LLC

9. API Well No.

3. Address and Telephone No. **C/O Walsh Engineering & Production Corp.**
7415 East Main, Farmington, NM 87402 505-327-4892

10. Field and Pool, or Exploratory Area
Blanco Mesaverde/Basin Dakota

4. Location of Well (Footage, Sec., T., R., M., or Survey Description)
485' FSL & 1125' FEL Sec 15, T31N, R6W

11. County or Parish, State
Rio Arriba, NM

CHECK APPROPRIATE BOX(s) TO INDICATE NATURE OF NOTICE, REPORT, OR OTHER DATA

TYPE OF SUBMISSION

- ☒ Notice of Intent
☐ Subsequent Report
☐ Final Abandonment

TYPE OF ACTION

- ☐ Abandonment
☐ Recompletion
☐ Plugging Back
☐ Casing Repair
☐ Altering Casing
☐ Other See Below

- ☒ Change of Plans
☐ New Construction
☐ Non-Routine Fracturing
☐ Water Shut-Off
☐ Conversion to Injection
☐ Dispose Water
(Note: Report results of multiple completion on Well Completion or Recompletion Report and Log form.)

13. Describe Proposed or Completed Operations (Clearly state all pertinent details, and give pertinent dates, including estimated date of starting any proposed work. If well is directionally drilled, give subsurface locations and measured and true vertical depths for all markers and zones pertinent to this work.)*

Williams Production Company LLC proposes to drill and complete the Rosa Unit 12B as a Mesaverde/Dakota dual well as per the attached drilling and completion procedure. The well is currently permitted as a stand alone Mesaverde well. No changes on the surface will occur from this proposed change of plans.

Attached: New plat showing Mesaverde/Dakota and new drilling & completion procedure.

NSL#4637

14. I hereby certify that the foregoing is true and correct

Signed John C. Thompson (John C. Thompson) Title Agent/Engineer Date 08/20/01

(This space for Federal or State office use)

Approved by _____ Title _____ Date 8/29/01
Conditions of approval, if any: _____

Title 18 U.S.C. Section 1001, makes it a crime for any person knowingly and willfully to make to any department or agency of the United States any false, fictitious or fraudulent statements or representations as to any matter within its jurisdiction.

*See Instruction on Reverse Side

District I
PO Box 1980, Hobbs, NM 88241-1980

State of New Mexico
Energy, Minerals & Natural Resources Department

Form C-102
Revised February 21, 1994
Instructions on back
Submit to Appropriate District Office
State Lease - 4 Copies
Fee Lease - 3 Copies

District II
PO Drawer 00, Artesia, NM 88211-0719

OIL CONSERVATION DIVISION
PO Box 2088
Santa Fe, NM 87504-2088

District III
1000 Rio Brazos Rd., Aztec, NM 87410

District IV
PO Box 2088, Santa Fe, NM 87504-2088

☐ AMENDED REPORT

WELL LOCATION AND ACREAGE DEDICATION PLAT

*API Number		*Pool Code 72319 / 71599		*Pool Name Blanco Mesaverde / Basin Dakota	
*Property Code 17033		*Property Name ROSA UNIT			*Well Number 128
*OGRID No. 120782		*Operator Name WILLIAMS PRODUCTION COMPANY			*Elevation 6144'

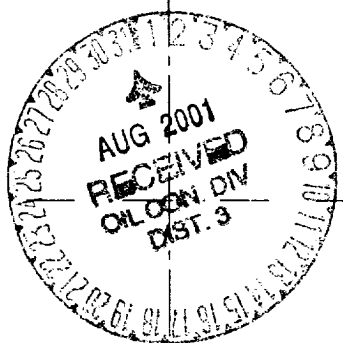

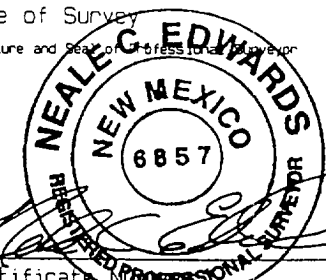
¹⁰ Surface Location

UL or lot no.	Section	Township	Range	Lot Idn	Feet from the	North/South line	Feet from the	East/West line	County
P	15	31N	6W		485	SOUTH	1125	EAST	RIO ARriba

¹¹ Bottom Hole Location If Different From Surface

UL or lot no.	Section	Township	Range	Lot Idn	Feet from the	North/South line	Feet from the	East/West line	County
¹² Dedicated Acres E/2 320					¹³ Joint or Infill I	¹⁴ Consolidation Code U	¹⁵ Order No.		

NO ALLOWABLE WILL BE ASSIGNED TO THIS COMPLETION UNTIL ALL INTERESTS HAVE BEEN CONSOLIDATED
OR A NON-STANDARD UNIT HAS BEEN APPROVED BY THE DIVISION

¹⁶ LOT 1 TRACT 38 5253.60'				¹⁷ OPERATOR CERTIFICATION I hereby certify that the information contained herein is true and complete to the best of my knowledge and belief.  Signature John C. Thompson Printed Name Agent Title 8/23/01 Date	
LOT 2 TRACT 39 5280.00'				¹⁸ SURVEYOR CERTIFICATION I hereby certify that the well location shown on this plat was plotted from field notes of actual surveys made by me or under my supervision and that the same is true and correct to the best of my belief. REVISED: AUGUST 20, 2001 SEPTEMBER 25, 2000 Date of Survey Signature and Seal of Professional Surveyor  Certificate No. 6857	
TRACT 40 5258.88'					
5280.00'					

1125'
485'



WILLIAMS PRODUCTION COMPANY

Operations Plan

(Note: This procedure will be adjusted on site based upon actual conditions)

<u>DATE:</u>	8/20/2001	<u>FIELD:</u>	Blanco MV/DK
<u>WELL NAME:</u>	Rosa Unit #12B	<u>SURFACE:</u>	BOR
<u>LOCATION:</u>	SE/4 SE/4 Sec 15-31N-6W Rio Arriba, NM	<u>MINERALS:</u>	Federal
<u>ELEVATION:</u>	6144' GR	<u>LEASE #</u>	SF-078765
<u>MEASURED DEPTH:</u>	5891'		

I. GEOLOGY: Surface formation - San Jose

A. FORMATION TOPS: (KB)

	<u>MD</u>		<u>MD</u>
Ojo Alamo	2191'	Mancos sh	5736'
Kirtland sh	2301'	Gallup ss	6761'
Fruitland cl	2796'	Greenhorn ls	7476'
Pictured Cliffs ss	2976'	Graneros sh	7531'
Lewis sh	3261'	Dakota ss	7661'
Cliff House ss	5161'		
Menefee	5211'		
Point Lookout ss	5441'	Total Depth	7911'

B. LOGGING PROGRAM: IND/GR/TEMP from TD to the Intermediate Casing Shoe. DEN/Neutron/GR (selected intervals by on-site Geologist). *Subject to change as wellbore conditions dictate.*

C. NATURAL GAUGES: Gauge any noticeable increases in gas flow. Gauge well @ 5800' and before TOH for logs @ 7911'. Record all gauges in Tour book and on morning reports.

II. DRILLING

A. MUD PROGRAM: Clear water with benex to 7 5/8" casing point. LSND to log and run pipe. Treat for lost circulation as necessary. Obtain 100% returns prior to cementing. Notify Engineering of any mud losses.

B. BOP TESTING: While drill pipe is in use, the pipe rams will be function tested not less than once each day. The blind rams will be function tested once each trip. The anticipated reservoir is expected to be less than 1300 psi, so the rams will be tested to 1500 psi. The drum brakes will be inspected and tested each tour. All tests, inspections and SPR's will be recorded in the tour book as to time and results.

III. MATERIALS

A. CASING PROGRAM:

<u>CASING TYPE</u>	<u>HOLE SIZE</u>	<u>DEPTH</u>	<u>CASING SIZE</u>	<u>WT. & GRADE</u>
Surface	14-3/4"	+/- 500'	10-3/4"	32.75# H-40
Intermediate	9-7/8"	+/-3451'	7-5/8"	26.4# K-55
Prod. Casing	6-3/4"	+/- 7911'	5-1/2"	17.0# N-80

B. FLOAT EQUIPMENT:

1. SURFACE CASING: 10-3/4" notched regular pattern guide shoe. Run (1) Standard centralizer on each of the bottom (3) Joints.
2. INTERMEDIATE CASING: 7-5/8" cement nose guide shoe with a self- fill insert float. Place float one (1) joint above the shoe and five (5) centralizers, spaced every other joint, starting with the float collar. Place turbulent centralizers, at 120' intervals, starting at 1500' to the surface. Total centralizers (5 regular and 13 turbulent).
3. PRODUCTION CASING: 5-1/2" whirler type cement nose guide shoe with a latch collar on top of 20' bottom joint. Place 20' marker joint on top of 10 th joint and one above 5100'.

C. CEMENTING:

(Note: Volumes may be adjusted onsite due to actual conditions)

1. SURFACE: Use 450sx (626cu.ft.) of class "Type III" with 2% CaCl₂ and 1/4# of cello-flake/sk (Yield = 1.39 cu.ft./sk, Weight = 14.5 #/gal.). 100% excess to circulate the surface. WOC 12 hours. Test to 1500#.
2. INTERMEDIATE: Lead: 555sx (1159cu.ft.) of class "Premium Lite" 65/35, Type III/Poz with 8% gel and 1/4# cello-flake/sk (Yield = 2.09 cu.ft./sk, Weight = 12.1 #/gal.). Tail: 235sx (324cu.ft.) of class "Type III" with 1/4# cello-flake/sk (Yield = 1.39 cu.ft./sk, Weight = 14.5#/gal.). 100% excess in lead and tail to circulate to surface. Total volume = 1483 cu.ft. WOC 12 hours. Run a temperature survey after 8 hours if cement is not circulated.
3. PRODUCTION CASING: 290 sx (572 ft³) of Premium Light HS + 1% FL-52 + .2% CD-32 + .25 #/sk Celloflake + 4% Phenoseal – .3% R3. (Yield = 1.99 ft³/sk, Weight = 12.5 #/gal.). Displace cement at a minimum of 8 BPM. Use 50% excess in calculation to raise cement 150' into intermediate casing. Total volume 572ft³. WOC 12 hours.

IV COMPLETION

A. CBL

1. Run Cement Bond Log across all intervals to be perforated and find Top of Cement behind all casing strings if cement not circulated to surface..

B. PRESSURE TEST

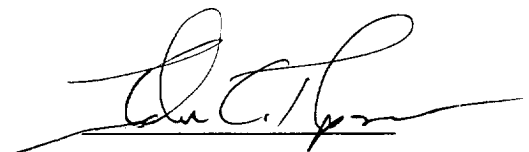
1. Pressure test 7 5/8" & 5-1/2" casing to 3300# for 15 minutes.

C. STIMULATION

1. Stimulate Dakota with approximately 70,000# of 20/40 sand in x-link foam.
2. Isolate Dakota with a RBP.
3. Stimulate Point Lookout with approximately 80,000# of 20/40 sand in slick water.
4. Isolate Point Lookout with a RBP.
5. Perforate the Menefee/Cliff House as determined from the open hole logs.
6. Stimulate with approximately 80,000# of 20/40 sand in slick water.
7. Test each zone before removing bridge plugs.

D. RUNNING TUBING

1. Dakota: Run 2-1/16", 3.25#, J-55, IJ tubing with 1/2 mule shoe on bottom, SN with pump-out plug on top of bottom joint. Use production packer (w/ 5 Seal Units) to isolate Dakota from Mesaverde. Land tubing approximately 100' below top Dakota perf.
2. Mesa Verde: Run 2-3/8", 2.9#, J-55, EUE tubing with a SN (1.91" ID) on top of bottom joint. Land tubing approximately 25' above the bottom Point Lookout perforations.



John C. Thompson
Engineer

Williams Production Company LLC Well Bore Schematic

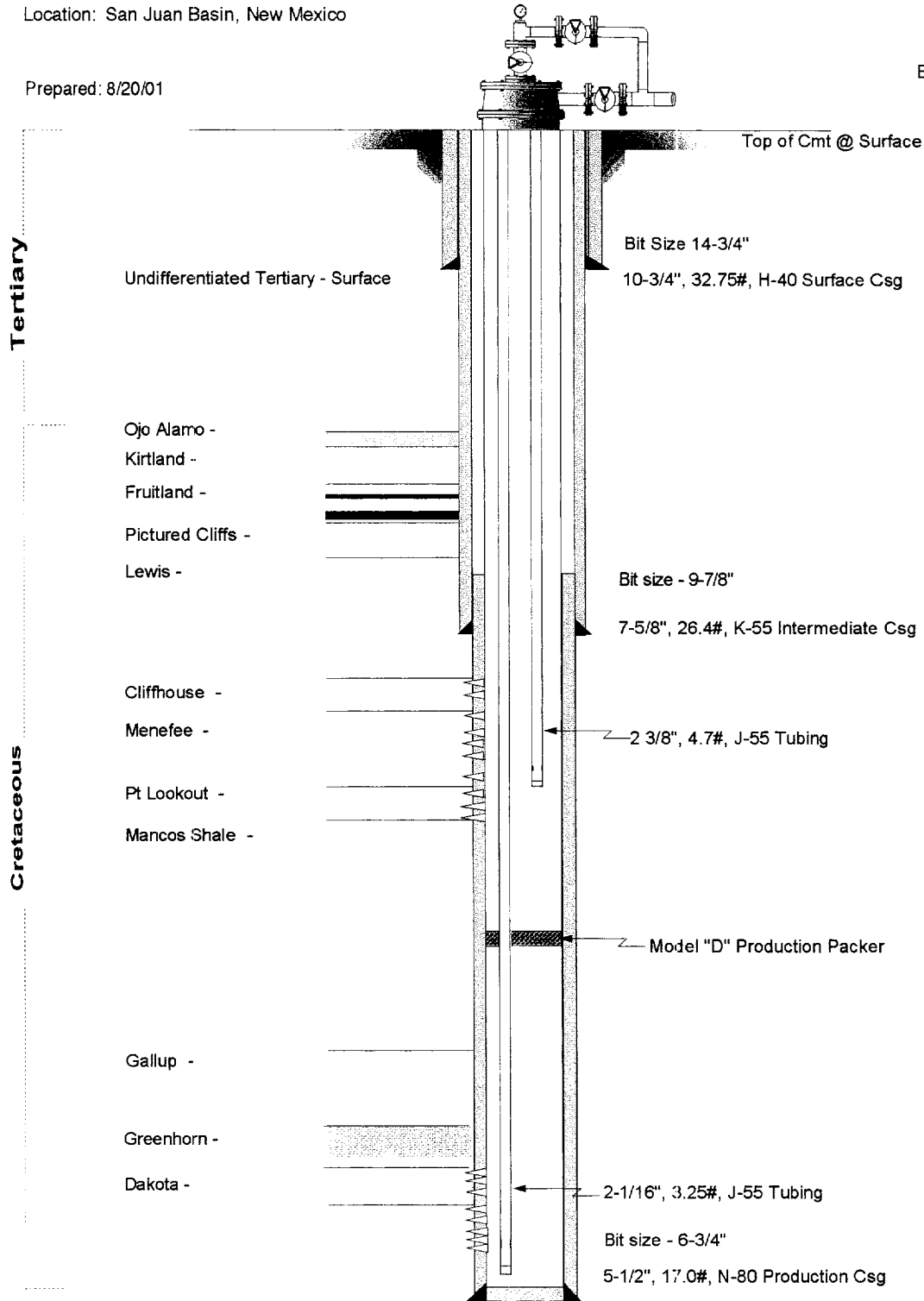
Mesaverde - Dakota Dual Well

Typical Wellbore Configuration

Location: San Juan Basin, New Mexico

Prepared: 8/20/01

By: John C. Thompson



WELL DATA:

Walsh Engineering & Production

Well Control Equipment Schematic for 2M Service

Attachment to Drilling Technical Program

Typical Mesaverde/Dakota BOP setup

Location: San Juan Basin, New Mexico

Date: August 20, 2001

By: John Thompson

