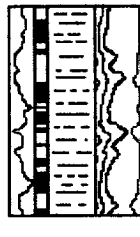
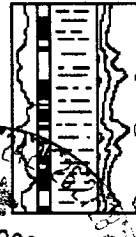


SOFTROCK GEOLOGICAL SERVICES, INC.



591 County Rd. 233 Durango, CO 81301

(970) 247- 8868 fax 247- 5108



Scale 1:240 (5"=100') Imperial

Well Name: San Juan 31-6 Unit No. 231R (Kfc)
Location: NESW Sec. 27 T31N-R06W
Licence Number:
Spud Date: 10/29/01
Surface Coordinates: 2149' FSL
1754' FWL
Bottom Hole
Coordinates:
Ground Elevation (ft): 6440' K.B. Elevation (ft): 6456'
Logged Interval (ft): 3133' To: 3325' Total Depth (ft): 3325'
Formation: Fruitland Formation
Type of Drilling Fluid: Air/Mist
Printed by MUD.LOG from WellSight Systems Inc. 1-800-447-1534 www.wellsight.com

OPERATOR

Company: Phillips Petroleum Company
Address: 5525 Highway 64
Farmington, NM 87401

GEOLOGIST

Name: Ron Horton, Steve Amstutz
Company: Softrock Geological Services
Address: 591 CR 233
Durango, CO 81301
(970) 247-8868 247-5108 fax

Hole Data:

13 3/4" to 228'
8 3/4" to 3133'
6-1/4" to 3325' (TD)

Casing Data:

Surface 9-5/8" set at 224'
Intermediate 7" set at 3128'

Comments:

Key Energy Services Rig #53
Company Representative David Green

ROCK TYPES

Anhy	Dol	Shale	Clyst
Bent	Gyp	Shcol	Fracture
Brec	Igne	Shgy	Shale
Cht	Lmst	Siltst	Siltst
Clyst	Meta	Ss	Carb sh
Coal	Mrst	Till	
Congl	Salt	Blank	

ACCESSORIES

MINERAL		FOSSIL		TEXTURE
Anhy	Marl	Algae	Dol	Boundst
Arggm	Minxl	Amph	Gyp	Chalky
Arg	Nodule	Belm	Ls	Cryxln
Bent	Phos	Bioclst	Mrst	Earthy
Bit	Pyr	Brach	Siltst	Finexln
Brecfrag	Salt	Bryozoa	Ssstrg	Grainst
Calc	Sandy	Cephal	Lithogr	Microxln
Carb	Silt		Mudst	Packst
Chtdk	Sulphur		Wackest	
Chtlt	Tuff			
Dol				
Feldspar				
Ferrpel				
Ferr				
Glau				
Gyp				
Hvymn				
Kaol				

OTHER SYMBOLS

POROSITY TYPE	Well	Spotted	Sidewall
Earthy	Moderate	Ques	Bit trip
Fenest	Poor	Dead	Csg shoe
Fracture	ROUNDING	INTERVALS	Fracture
Inter	Rounded	None	Gas show
Moldic	Subrnd	Core	Midnight
Organic	Subang	Dst	Ops
Pinpoint	Angular	Sliding	Carbide
Vuggy	OIL SHOWS	EVENTS	Survey
SORTING	Even	Rft	

