

DISTRICT I  
P.O. Box 1980, Hobbs, NM 88240

DISTRICT I  
P.O. Drawer DD, Artesia, NM 88210

DISTRICT I  
1000 Rio Brazos Rd., Aztec, NM 87410

OIL CONSERVATION DIVISION

2040 Pacheco St.  
Santa Fe, New Mexico 87505

WELL API NO. 30-037-26962

5. Indicate Type of Lease

STATE ☐

FEE ☐

6. State Oil & Gas Lease No.

SUNDRY NOTICES AND REPORTS ON WELLS

(DO NOT USE THIS FORM FOR PROPOSALS TO DRILL OR TO DEEPEN OR PLUG BACK TO A  
DIFFERENT RESERVOIR. USE "APPLICATION FOR PERMIT"  
(FORM C-101) FOR SUCH PROPOSALS)

1. Type of Well:

OIL

GAS

WELL ☐

WELL ☒

OTHER

2. Name of Operator

*Williams Production Company, LLC*

3. Address of Operator

*c/o Walsh Engineering, 7415 East Main Street, Farmington, NM 87402*

4. Well Location

Unit Letter \_\_\_\_\_ Feet From The \_\_\_\_\_ Line and \_\_\_\_\_ Feet From The \_\_\_\_\_ Line

Section 25 Township 31N Range 6W NMPM County \_\_\_\_\_

10. Elevation (Show whether DF, RKB, RT, GR, etc.)

7. Lease Name or Unit Agreement Name

*Rosa Unit*

8. Well No.

*59, 160B, 165B, 165C*

9. Pool name or Wildcat

*Dakota*

Check Appropriate Box to Indicate Nature of Notice, Report, or Other Data

11. NOTICE OF INTENTION TO:

PERFORM REMEDIAL WORK ☐

PLUG AND ABANDON ☐

TEMPORARILY ABANDON ☐

CHANGE PLANS ☐

PULL OR ALTER CASING ☐

OTHER: Proaction Unit Change ☒

SUBSEQUENT REPORT OF:

REMEDIAL WORK ☐

ALTERING CASING ☐

COMMENCE DRILLING OPNS. ☐

PLUG & ABANDONMENT ☐

CASING TEST AND CEMENT JOB ☐

OTHER: \_\_\_\_\_ ☒

12. Describe Proposed or Completed Operations (Clearly state all pertinent details, and give pertinent date, including estimated date of starting any proposed work).  
SEE RULE 1103.

*Williams Production Company, LLC proposes a north half - south half proaction unit in section 25, 31N, R6W in order to comply with NMOCD hearing order R20-46. The following wells would be affected by the proaction unit change: Rosa Unit #59 (south half), Rosa Unit 160B-proposed (south half), Rosa Unit 165B (north half), Rosa Unit 165C (north half).*

*Attached: New plats showing correct Dakota proaction unit.*

I hereby certify that the information above is true and complete to the best of my knowledge and belief.

SIGNATURE

*[Signature]*

TITLE Agent/Engineer

DATE 05/06/02

TYPE OR PRINT NAME

John C. Thompson

TELEPHONE NO. 327-4892

(This space for State Use)

APPROVED BY

Original Signed by STEVEN N. HAYDEN

TITLE

DEPUTY OIL & GAS INSPECTOR, DIST. 1

DATE

MAY - 6 2002

CONDITIONS OF APPROVAL, IF ANY:

District I  
PO Box 1980, Hobbs, NM 88241-1980

District II  
PO Drawer DD, Artesia, NM 88211-0719

District III  
1000 Rio Brazos Rd., Aztec, NM 87410

District IV  
PO Box 2088, Santa Fe, NM 87504-2088

State of New Mexico  
Energy, Minerals & Natural Resources Department

OIL CONSERVATION DIVISION  
PO Box 2088  
Santa Fe, NM 87504-2088

Form C-102  
Revised February 21, 1994  
Instructions on back  
Submit to Appropriate District Office  
State Lease - 4 Copies  
Fee Lease - 3 Copies

☐ AMENDED REPORT

WELL LOCATION AND ACREAGE DEDICATION PLAT

*API Number	*Pool Code 79870 / 71599	*Pool Name Laguna Seca Gallup / Basin Dakota
*Property Code 17033	*Property Name ROSA UNIT	*Well Number 59
*GRID No. 120782	*Operator Name WILLIAMS PRODUCTION COMPANY	*Elevation 6400'

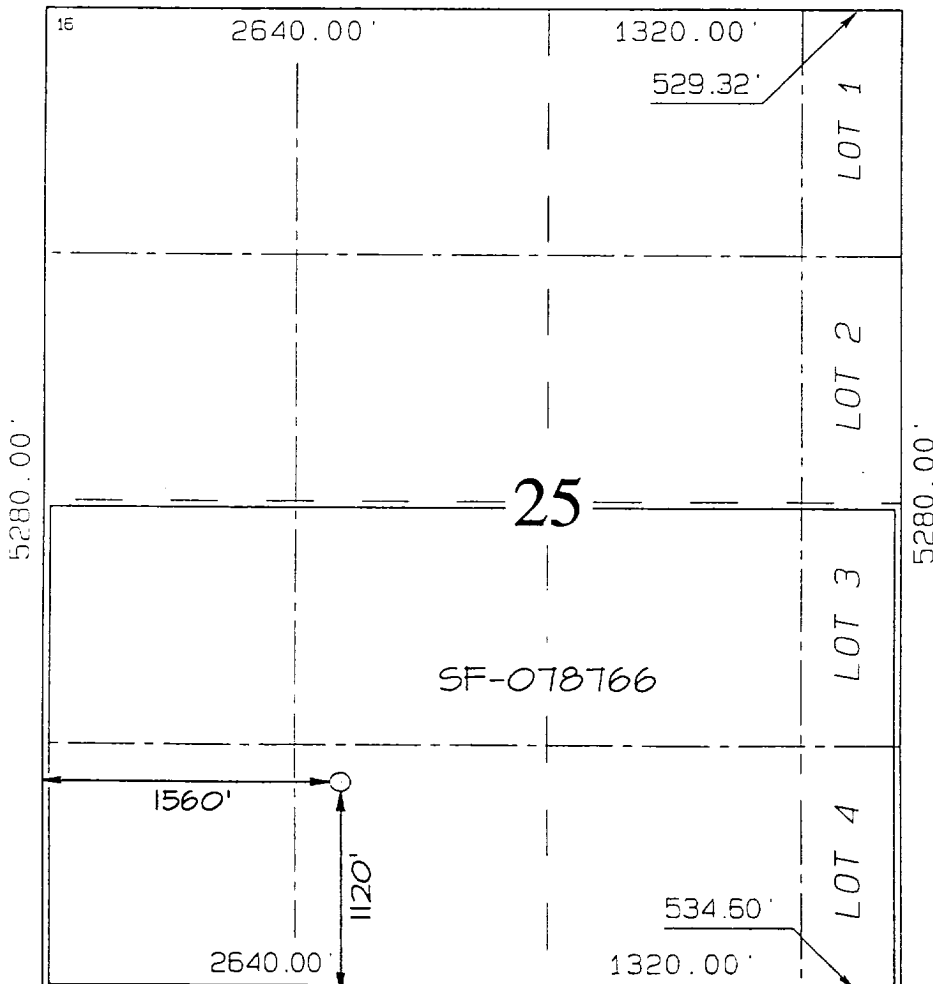
10 Surface Location

UL or lot no.	Section	Township	Range	Lot Idn	Feet from the	North/South line	Feet from the	East/West line	County
N	25	31N	6W		1120	SOUTH	1560	WEST	RIO ARriba

11 Bottom Hole Location If Different From Surface

UL or lot no.	Section	Township	Range	Lot Idn	Feet from the	North/South line	Feet from the	East/West line	County
12 Dedicated Acres 272.32 Acres - S/2					13 Joint or Infill	14 Consolidation Code	15 Order No. R-2046 A		

NO ALLOWABLE WILL BE ASSIGNED TO THIS COMPLETION UNTIL ALL INTERESTS HAVE BEEN CONSOLIDATED OR A NON-STANDARD UNIT HAS BEEN APPROVED BY THE DIVISION



17 OPERATOR CERTIFICATION

I hereby certify that the information contained herein is true and complete to the best of my knowledge and belief

Signature

John C. Thompson

Printed Name

Agent/Engineer

Title

5/6/02

Date

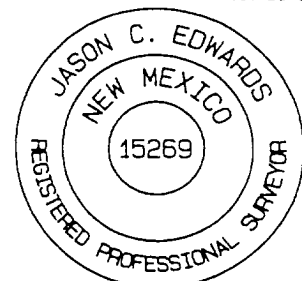
18 SURVEYOR CERTIFICATION

I hereby certify that the well location shown on this plat was plotted from field notes of actual surveys made by me or under my supervision, and that the same is true and correct to the best of my belief

INFORMATION OF RECORD

Date Plat Drawn: MAY 1, 2002

Signature and Seal of Professional Surveyor



JASON C. EDWARDS  
Certificate Number 15269

District I  
PO Box 1980, Hobbs, NM 88241-1980

District II  
PO Drawer 00, Artesia, NM 88211-0719

District III  
1000 Rio Brazos Rd., Aztec, NM 87410

District IV  
PO Box 2088, Santa Fe, NM 87504-2088

State of New Mexico  
Energy, Minerals & Natural Resources Department

OIL CONSERVATION DIVISION  
PO Box 2088  
Santa Fe, NM 87504-2088

Form C-102  
Revised February 21, 1994  
Instructions on back  
Submit to Appropriate District Office  
State Lease - 4 Copies  
Fee Lease - 3 Copies

☐ AMENDED REPORT

WELL LOCATION AND ACREAGE DEDICATION PLAT

*API Number		*Pool Code	*Pool Name
		72319 - 71599	Blanco Mesavende - Basin Dakota
*Property Code	*Property Name		*Well Number
17033	ROSA UNIT		1608
*GRID No.	*Operator Name		*Elevation
120782	WILLIAMS PRODUCTION COMPANY		6410'

<sup>10</sup> Surface Location

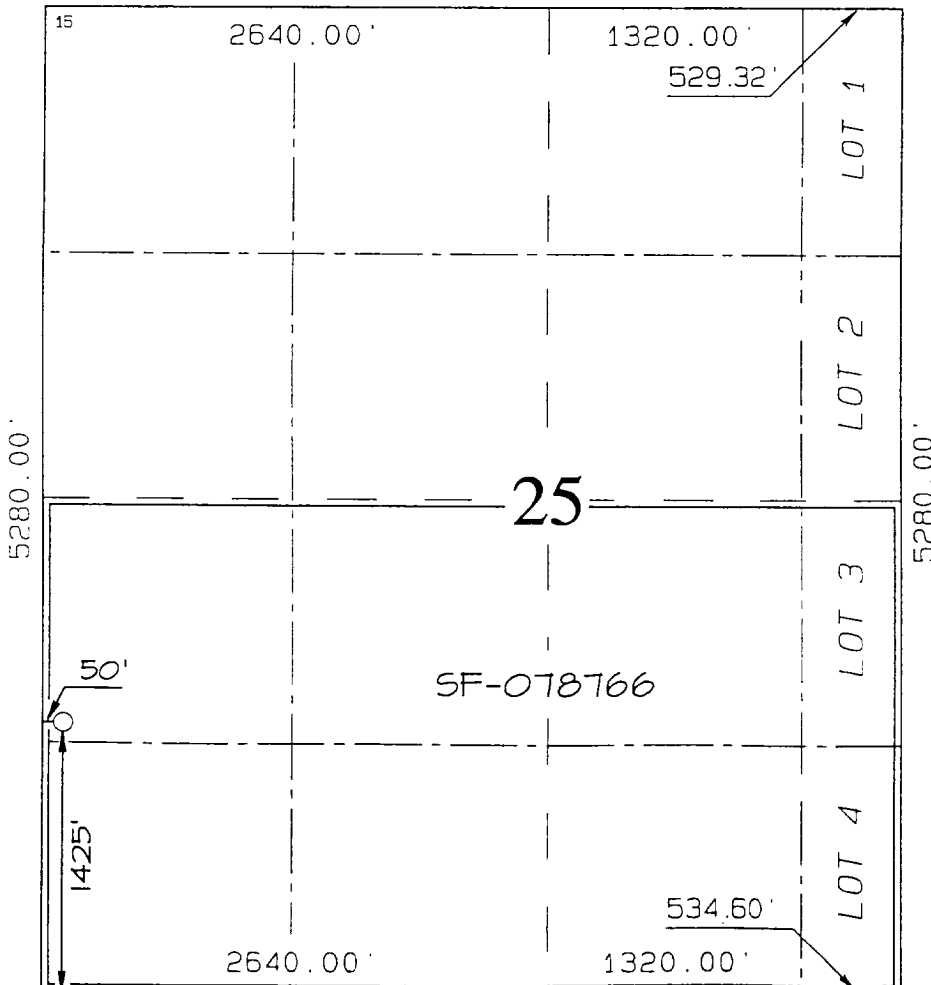
UL or lot no	Section	Township	Range	Lot Idn	Feet from the	North/South line	Feet from the	East/West line	County
L	25	31N	6W		1425	SOUTH	50	WEST	RIO ARriba

<sup>11</sup> Bottom Hole Location If Different From Surface

UL or lot no	Section	Township	Range	Lot Idn	Feet from the	North/South line	Feet from the	East/West line	County

<sup>12</sup> Dedicated Acres	<sup>13</sup> Joint or Infill	<sup>14</sup> Consolidation Code	<sup>15</sup> Order No.
272.32 Acres - S/2			R-2046A

NO ALLOWABLE WILL BE ASSIGNED TO THIS COMPLETION UNTIL ALL INTERESTS HAVE BEEN CONSOLIDATED  
OR A NON-STANDARD UNIT HAS BEEN APPROVED BY THE DIVISION



<sup>17</sup> OPERATOR CERTIFICATION

I hereby certify that the information contained herein is true and complete to the best of my knowledge and belief.

Signature

John C. Thompson

Printed Name

Agent/Engineer

Title

5/6/02

Date

<sup>18</sup> SURVEYOR CERTIFICATION

I hereby certify that the well location shown on this plat was plotted from field notes of actual surveys made by me or under my supervision, and that the same is true and correct to the best of my belief.

REVISED: MAY 2, 2002

Survey Date: FEBRUARY 14, 2002

Signature and Seal of Professional Surveyor



JASON C. EDWARDS

Certificate Number

15269

District I  
PO Box 1980, Hobbs, NM 88241-1980

State of New Mexico  
Energy, Minerals & Natural Resources Department

Form C-102  
Revised February 21, 1994

District II  
PO Drawer DD, Artesia, NM 88211-0719

OIL CONSERVATION DIVISION  
PO Box 2088  
Santa Fe, NM 87504-2088

Instructions on back  
Submit to Appropriate District Office  
State Lease - 4 Copies  
Fee Lease - 3 Copies

District III  
1000 Rio Brazos Rd., Aztec, NM 87410

District IV  
PO Box 2088, Santa Fe, NM 87504-2088

☐ AMENDED REPORT

### WELL LOCATION AND ACREAGE DEDICATION PLAT

*API Number		*Pool Code	*Pool Name
		72319 / 71599	Blanco Mesaverde / Basin Dakota
*Property Code	*Property Name		*Well Number
17033	ROSA UNIT		165B
*GRID No.	*Operator Name		*Elevation
120782	WILLIAMS PRODUCTION COMPANY		6311'

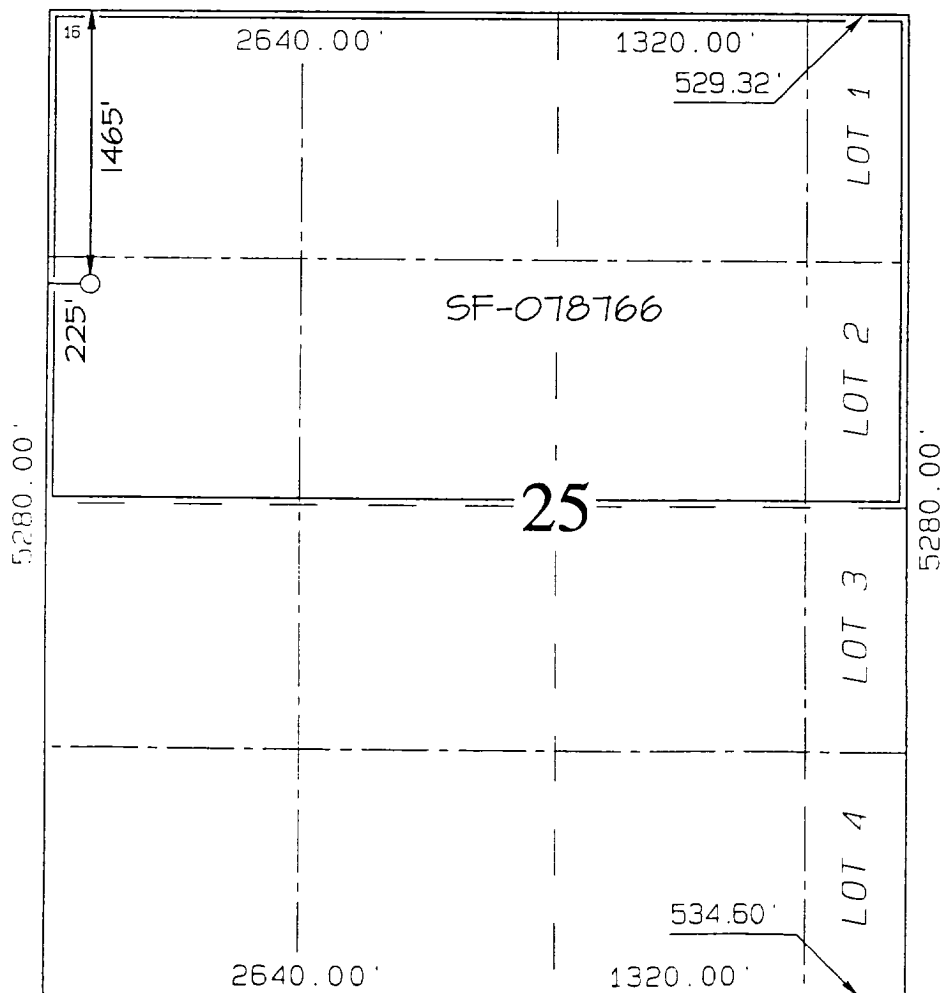
#### <sup>10</sup> Surface Location

UL or lot no.	Section	Township	Range	Lot Idn	Feet from the	North/South line	Feet from the	East/West line	County
E	25	31N	6W		1465	NORTH	225	WEST	RIO ARriba

#### <sup>11</sup> Bottom Hole Location If Different From Surface

UL or lot no.	Section	Township	Range	Lot Idn	Feet from the	North/South line	Feet from the	East/West line	County
<sup>12</sup> Dedicated Acres					<sup>13</sup> Joint or Infill	<sup>14</sup> Consolidation Code	<sup>15</sup> Order No.		
272.16 Acres - N/2							R-2046A		

NO ALLOWABLE WILL BE ASSIGNED TO THIS COMPLETION UNTIL ALL INTERESTS HAVE BEEN CONSOLIDATED  
OR A NON-STANDARD UNIT HAS BEEN APPROVED BY THE DIVISION



<sup>17</sup> OPERATOR CERTIFICATION I hereby certify that the information contained herein is true and complete to the best of my knowledge and belief.  Signature John C. Thompson Printed Name Agent/Engineer Title 5/6/02 Date
<sup>18</sup> SURVEYOR CERTIFICATION I hereby certify that the well location shown on this plat was plotted from field notes of actual surveys made by me or under my supervision, and that the same is true and correct to the best of my belief. REVISED: MAY 1, 2002 Survey Date: AUGUST 29, 2000 Signature and Seal of Professional Surveyor  JASON C. EDWARDS Certificate Number 15269