

submitted in lieu of Form 3160-5

UNITED STATES  
DEPARTMENT OF THE INTERIOR  
BUREAU OF LAND MANAGEMENT

Sundry Notices and Reports on Wells

- |  |   |
|--|---|
| 1. Type of Well<br>GAS   | 5. Lease Number<br>SF-077922  |
| 2. Name of Operator<br><b>MERIDIAN OIL</b>   | 6. If Indian, All. or<br>Tribe Name                                   |
| 3. Address & Phone No. of Operator<br>PO Box 4289, Farmington, NM 87499 (505) 326-9700           | 7. Unit Agreement Name  |
| 4. Location of Well, Footage, Sec., T, R, M<br>990' FSL, 330' FEL, Sec. 34, T-30-N, R-12-W, NMPM | 8. Well Name & Number<br>Hudson #2                                    |
|  | 9. API Well No.<br>30-045-08950                                       |
|  | 10. Field and Pool<br>Basin Fruitland Coal/<br>Fulcher Kutz Pic. Clfs |
|  | 11. County and State<br>San Juan Co, NM                               |

12. CHECK APPROPRIATE BOX TO INDICATE NATURE OF NOTICE, REPORT, OTHER DATA

Type of Submission

- ☒ Notice of Intent  
☐ Subsequent Report  
☐ Final Abandonment

Type of Action

- |  |  |
|--|--|
| <input type="checkbox"/> Abandonment             | <input type="checkbox"/> Change of Plans         |
| <input checked="" type="checkbox"/> Recompletion | <input type="checkbox"/> New Construction        |
| <input type="checkbox"/> Plugging Back           | <input type="checkbox"/> Non-Routine Fracturing  |
| <input type="checkbox"/> Casing Repair           | <input type="checkbox"/> Water Shut off          |
| <input type="checkbox"/> Altering Casing         | <input type="checkbox"/> Conversion to Injection |
| <input type="checkbox"/> Other -                 |  |

13. Describe Proposed or Completed Operations

It is intended to complete the Fruitland Coal zone in this Pictured Cliffs well and produce it as a commingled well according to the attached procedure and well-bore diagram. The request for commingling was heard before the New Mexico Oil Conservation Division September 16, 1994.

RECEIVED  
NOV 17 1994  
OIL CON. DIV.  
DIST. 3

NOV 17 1994  
OIL CON. DIV.  
DIST. 3

14. I hereby certify that the foregoing is true and correct.

Signed *John Bradfield* (LB2) Title Regulatory Affairs Date 11/1/94

(This space for Federal or State Office use)

APPROVED BY \_\_\_\_\_ Title \_\_\_\_\_ Date \_\_\_\_\_

CONDITION OF APPROVAL, if any:

APPROVED

NOV 17 1994

DISTRICT MANAGER

HUDSON #2  
Recommend Completion Procedure  
SE/4 Section 34 T30N R12W

1. Test rig anchors and repair if necessary. Install 1-400 bbl frac tanks on location and fill with 2% KCL water. Filter all water to 25 microns. Heat water as required by weather.
2. MOL and RU. Comply to all NMOC, BLM and MOI rules & regulations. Hold safety meeting. ND wellhead. NU BOP. Test operation of rams. NU two relief lines.
3. TOOH w/ 1940' of 1-1/2" IJ 2.7# tbg, tally and inspect.
4. TIH w/ 2-1/4" bit on 1 1/4" drill pipe and 3-1/2" casing scraper and clean out to PBTD @ 2085'. Records indicate that the 3 1/2" casing is set deeper than the total depth of the hole. TOOH. Load hole w/ 11 bbls 2% KCL water. TOOH.
5. RU & RIH w/ CNL-CCL-GR and log from PBTD @ 2085' to 1500'.
6. RIH and wireline set 3-1/2" CIBP @ 1954'. Correlate w/ GR-CCL-CNL to ensure CIBP is set between PC and basal FTC. Load hole w/ water. TOOH.
7. Run CBL from PBTD @ 1954' to surface. If CBL appears inadequate, re-run log with 500 psi surface pressure. If bond still appears unacceptable, contact production engineering. Send copy of CBL to production engineering and drilling.

**\*\*\* LOWER COAL \*\*\***

8. RU hydraulic tree saver. Pressure test casing and bridge plug to 4000 psi for 15 minutes.
9. RU wireline and perf the following coal interval w/ 2-1/2" RTG w/ 11.0 gram charges, 0.33 holes @ 4 SPF (correlate depths to CNL-CCL-GR log).

**1914'-1938'**

Total: 24 feet: 96 holes

10. RU hydraulic tree saver.
11. RU treatment company for frac. Hold safety meeting with all personnel. Pressure test surface lines to 5000 psi. Pump 200 gals. of 15% HCL ahead of frac. Fracture treat lower coal according to attached schedule w/ 70Q foam at 20 BPM with 110,000 lbs of 20/40 mesh Arizona sand and 10,000 lbs of 12/20 mesh Arizona sand. Flush with 14 bbls 2% KCl water. Estimated treating pressure is 2100 psi. **MAXIMUM PRESSURE IS LIMITED TO 4000 PSI** Monitor backside and braden head pressures during frac. Monitor bottomhole and surface treating pressure, rate, foam quality and sand concentration with computer van. Frac during daylight only.
12. SI well for 2 hours for gel break.
13. After gel break, open well through choke manifold & monitor flow. Flow @ 20 bbls/hr, or less if sand is observed.

HUDSON #2  
Recommend Completion Procedure  
SE/4 Section 34 T30N R12W  
Page 2

14. When well ceases to flow, TIH w/ 1-1/4" drill pipe to 1954' to check for fill. CO. TOOH. TIH and set 3-1/2" RBP @ 1900' with wireline.
15. Refill 400 bbl frac tanks with 2% KCl water and filter to 25 microns. Heat water as required by weather.

**\*\*\* UPPER COAL \*\*\***

16. RU hydraulic tree saver. Pressure test casing and bridge plug to 4000 psi for 15 minutes.
17. RU wireline and perf the following coal interval w/ 2-1/2" RTG w/ 11.0 gram charges, 0.33 hole @ 4 SPF (correlate depths to CNL-CCL-GR log).

**1834' - 1844'    1784' - 1794'**

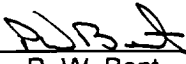
Total: 20 feet: 80 holes

18. RU hydraulic tree saver.
19. RU treatment company for frac. Hold safety meeting with all personnel. Pressure test surface lines to 5000 psi. Pump 200 gals. of 15% HCL ahead of frac. Fracture treat upper coal according to attached schedule w/ 70Q foam at 30 BPM with 90,000 lbs of 20/40 mesh Arizona sand and 10,000 lbs of 12/20 mesh Arizona sand. Flush with 13 bbls 2% KCl water. Estimated treating pressure is 2200 psi. **MAXIMUM PRESSURE IS LIMITED TO 4000 PSII** Monitor backside and braden head pressures during frac. Monitor bottomhole and surface treating pressure, rate, foam quality and sand concentration with computer van. Frac during daylight only.
20. SI well for 2 hours for gel break.
21. After gel break, open well through choke manifold & monitor flow. Flow @ 20 bbls/hr, or less if sand is observed.
22. When well ceases to flow, TIH w/ retrieving head on 1-1/4" drill pipe and clean out upper zone until sand flow stops. **Take Pitot gauge before releasing BP.** Release RBP set @ 1900' and TOOH.
23. TIH w/ 1-1/4" drill pipe and clean out lower coal until sand stops. After clean up, flow test the Coal for 24 hrs, taking pitot gauges every 6 hrs. **Take final Pitot gauge and gas & water samples.** TOOH

HUDSON #2  
Recommend Completion Procedure  
SE/4 Section 34 T30N R12W  
Page 3

24. TIH w/ 1930' of 1-1/4" IJ tbg w/ standard seating nipple one jt off bottom and pump-off plug on bottom. Land tbg string.
25. ND BOP and NU independent wellhead. Pump off plug. Take final Pitot gauge. Rig down & release rig.
26. Will move back on location and drill CIBP set at 1954' when appropriate regulatory approval are received.

Approve:

  
P. W. Bent

VENDORS:

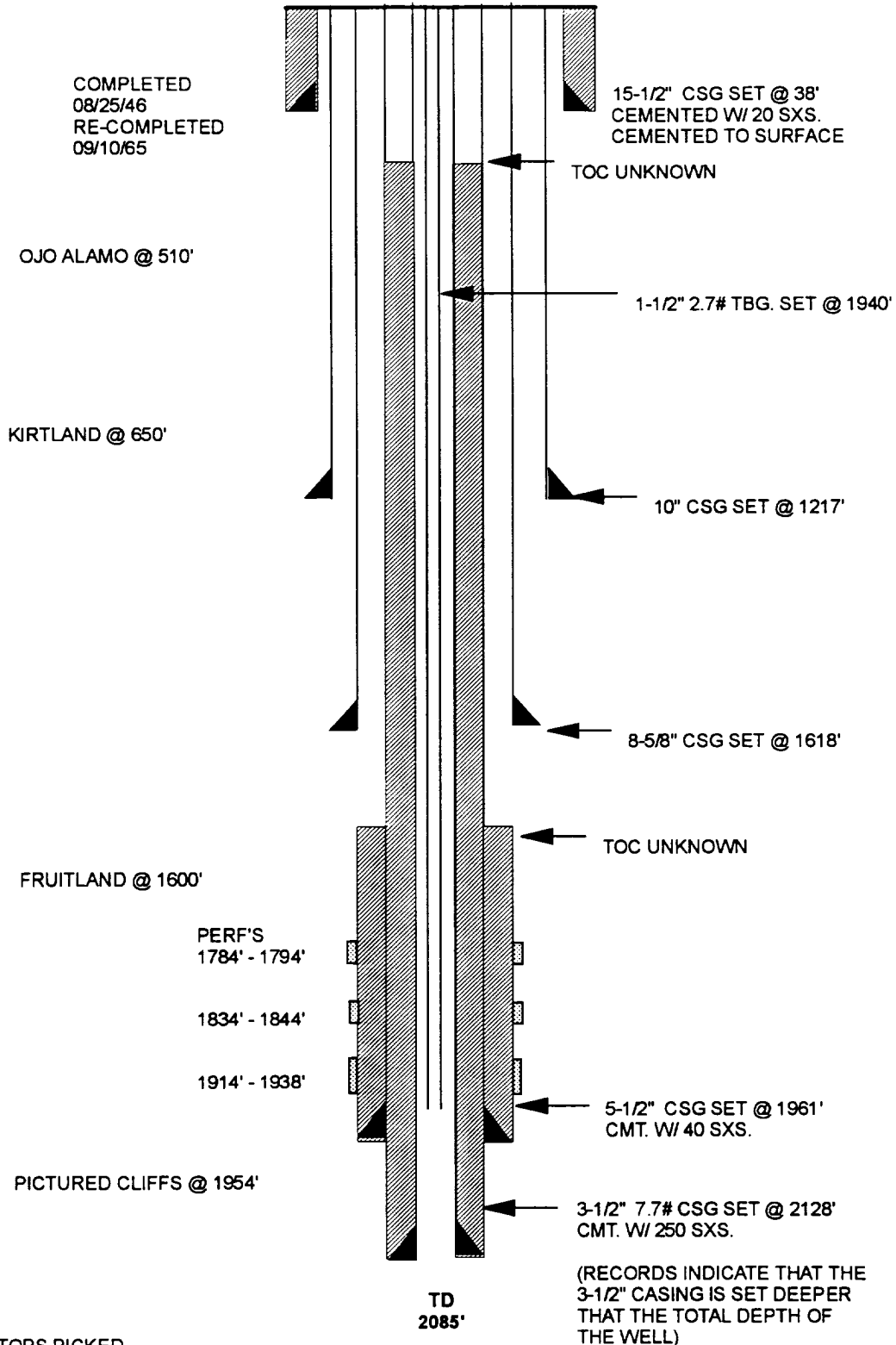
Wireline:	Petro	325-6669
Fracturing:	Western	327-6222

LJB

## HUDSON #2

PROPOSED  
FULCHER KUTZ PICTURE CLIFFS

UNIT P, SEC 34, T30N, R12W, SAN JUAN COUNTY, NM

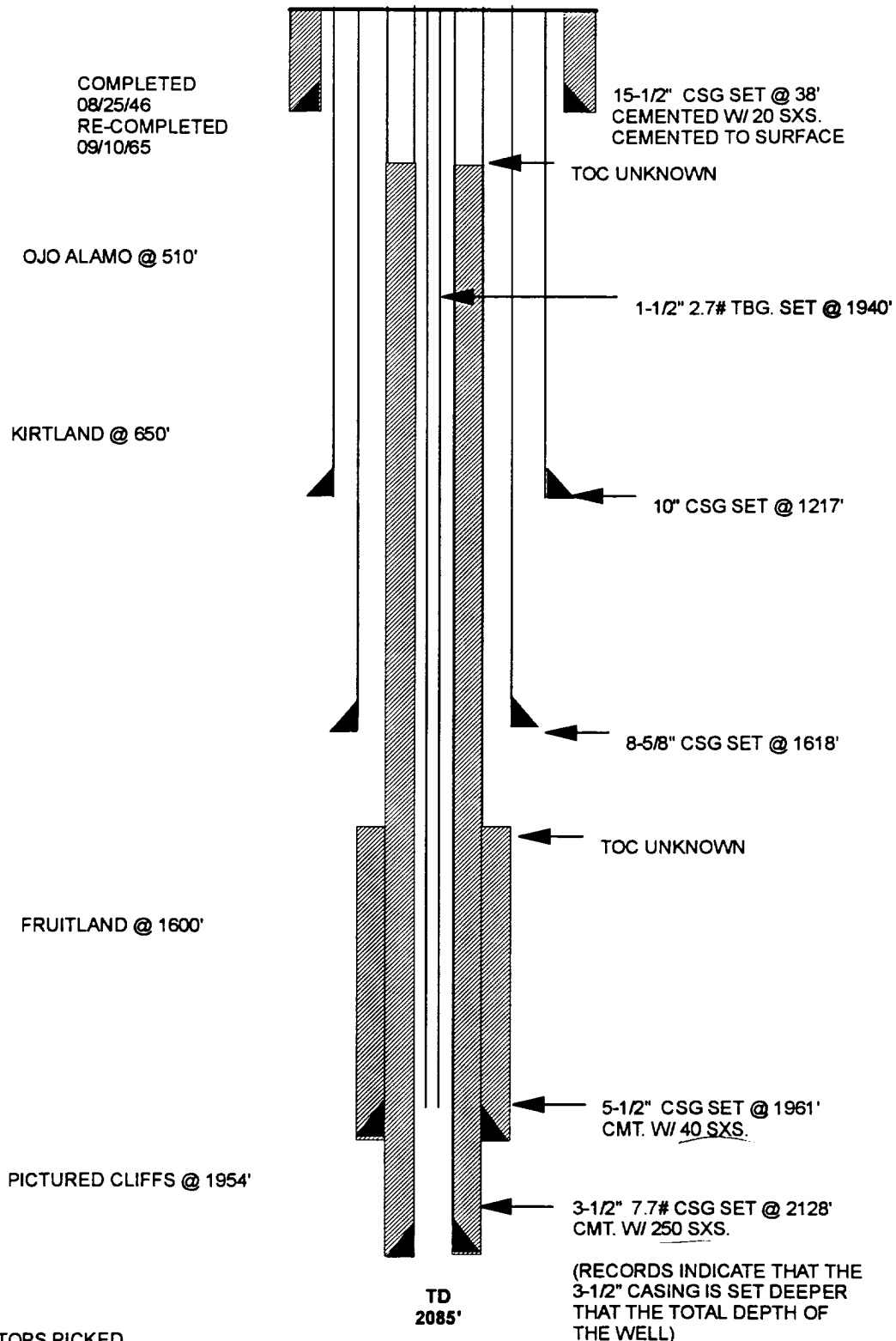


FORMATION TOPS PICKED  
FROM OFF SET LOG  
McGRATH #1C

# HUDSON #2

CURRENT  
FULCHER KUTZ PICTURE CLIFFS

UNIT P, SEC 34, T30N, R12W, SAN JUAN COUNTY, NM



FORMATION TOPS PICKED  
FROM OFF SET LOG  
McGRATH #1C