

NUMBER OF COPIES RECEIVED	
DISTRIBUTION	
SANTA FE	1
FILE	1
U.S.G.S.	2
LAND OFFICE	
TRANSPORTER	
OIL GAS	
PRORATOR OFFICE	
OPERATOR	

NEW MEXICO OIL CONSERVATION COMMISSION

Santa Fe, New Mexico

Form C-101
Revised (12/1/55)

1 Pan Am.

5 INOCC

1 File

1 Redfern & Hard

1 Christman

1 Artec Oil & Gas

NOTICE OF INTENTION TO DRILL

Notice must be given to the District Office of the Oil Conservation Commission and approval obtained before drilling or recompletion begins. If changes in the proposed plan are considered advisable, a copy of this notice showing such changes will be returned to the sender. Submit this notice in QUINTUPPLICATE. One copy will be returned following approval. See additional instructions in Rules and Regulations of the Commission. If State Land submit 6 Copies Attach Form C- 128 in triplicate to first 3 copies of form C-101

Farmington, New Mexico

(Place)

May 31, 1962

(Date)

OIL CONSERVATION COMMISSION
SANTA FE, NEW MEXICO

Gentlemen:

You are hereby notified that it is our intention to commence the Drilling of a well to be known as

Redfern and Hard, Inc.

(Company or Operator)

Ellsworth

(Lease)

Well No. 1, in N (Unit)

located 300 feet from the South line and 2140 feet from the

West

line of Section 29, T. 30N, R. 12W, NMPM.

(GIVE LOCATION FROM SECTION LINE) Basin - Dakota Pool, San Juan County

If State Land the Oil and Gas Lease is No.

If patented land the owner is Vaughn T. Drinen

Address Farmington, New Mexico

We propose to drill well with drilling equipment as follows: Rotary Tools

Surface to 6360'

The status of plugging bond is State Wide

Drilling Contractor Aspen Drilling Co., Farmington, New Mexico

We intend to complete this well in the Dakota Formation

formation at an approximate depth of 6360

CASING PROGRAM

We propose to use the following strings of Casing and to cement them as indicated:

Size of Hole	Size of Casing	Weight per Foot	New or Second Hand	Depth	Sacks Cement
12 1/4"	8 5/8"	24#	New	300'	160 sk
7 7/8"	4 1/2"	10.5#	New	6360'	300 sk

If changes in the above plans become advisable we will notify you immediately.

ADDITIONAL INFORMATION (If recompletion give full details of proposed plan of work.)

The 4 1/2" Csg. will be cemented in two stages, the first to cover the Gallup Formation and the second through a two stage tool below the Pictured Cliff Formation to protect same.

Approved.....
Except as follows:

5-31, 1962

Sincerely yours,

Redfern and Hard, Inc.

(Company or Operator)

By Original signed by T. A. Dugan

Position Consulting Engineer

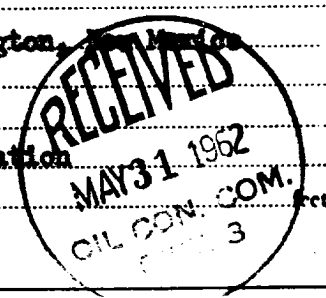
Send Communications regarding well to

Name T. A. Dugan

Address 1007 N. Dustin. Farmington. New Mex.

OIL CONSERVATION COMMISSION

By [Signature]



NEW MEXICO OIL CONSERVATION COMMISSION

Well Location and Acreage Dedication Plat

Section A.

Date May 11, 1962

Operator REDFERN AND HERD Lease Ellsworth
 Well No. 1 Unit Letter N Section 29 Township 30 NORTH Range 12 WEST, NMPM
 Located 300 Feet From the SOUTH Line 2140 Feet From the WEST Line
 County SAN JUAN G. L. Elevation 5488.0 Dedicated Acreage 320 Acres
 Name of Producing Formation Dakota Pool Basin - Dakota

1. Is the Operator the only owner in the dedicated acreage outlined on the plat below?
 Yes _____ No X
2. If the answer to question one is "no", have the interests of all the owners been consolidated by communitization agreement or otherwise? Yes X No _____. If answer is "yes", Type of Consolidation.
Communitization
3. If the answer to question two is "no", list all the owners and their respective interests below:

Owner

Land Description

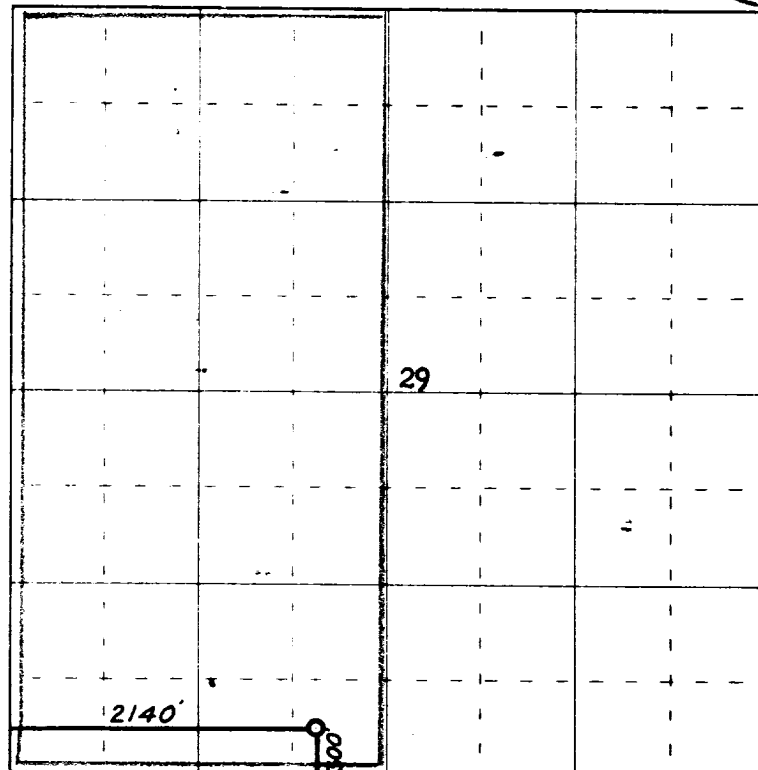
Section B.

This is to certify that the information in Section A above is true and complete to the best of my knowledge and belief.

Redfern and Herd, Inc.
 (Operator)
 Original signed by T. A. Dugan
 (Representative)
1007 N. Durkin
 (Address)
Farmington, New Mexico

Ref: GLO plat dated 7 April 1881

Note: All distances must be from outer boundaries of section.



0 330 660 990 1320 1650 1980 2310 2640 2000 1500 1000 500 0

Scale 4 inches equal 1 mile



(Seal)

Farmington, New Mexico

This is to certify that the above plat was prepared from field notes of actual surveys made by me or under my supervision and that the same are true and correct to the best of my knowledge and belief.

Date Surveyed 5 January 1962

James P. Lease
 Registered Professional Engineer and/or Land Surveyor
 James P. Lease N. Mex. Reg. No. 1163

