

PXA Procedures
Federal B # 1
O28-30N-11W

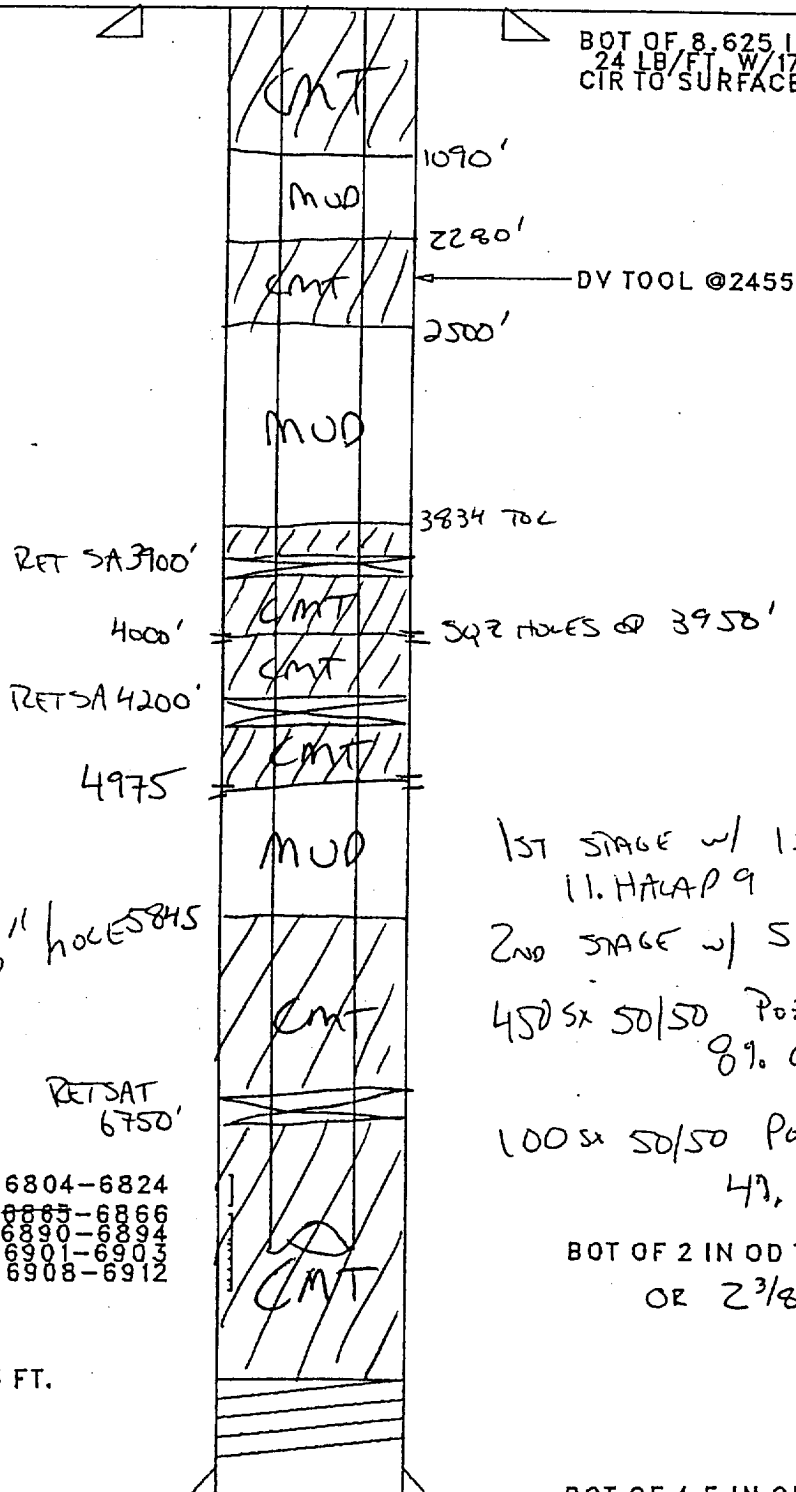
1. RIH with tbg and cement retainer. Set retainer at 6750'. Squeeze Dakota perfs from 6804' to 6912' with 24 sx class B cement. Pull out of retainer and set a cement plug to 5845' with 103 sx class B cement. WOC. Tag top of cement.
2. Load hole with 9ppg mud/POZ water to 4975'. RIH with perforating gun and shoot squeeze holes at 4975'. RIH with tbg and retainer and set retainer at 4200'. Block squeeze perf with 120 sx class B cement. Pull out of retainer and spot cement to 4000 with 23 sx class B cement.
3. RIH with perforating gun and shoot squeeze holes at 3950'. RIH with tbg and retainer and set retainer at 3900'. Block squeeze perfs with 12 sx class B cement. Pull out of retainer and spot 5 sx class B cement on top.
4. Load hole with 9ppg mud/POZ water to 2500'.
5. Spot cement plug from 2500' to 2280' with 25 sx class B cement.
6. Load hole with 9ppg mud/POZ water to 1090'. Spot a cement plug from 1090' to surface with 124 sx class B cement.
7. Tie on to backside and establish rate and pressure thru bradenhead. Pump 144 sx class B cement.
7. NUBOPE. Cut off casing and wellhead. Install PXA maker according to BLM or State requirements.
8. Turn over to John Schwartz for reclamation.
9. Rehabilitate location according to BLM and State requirements.

FEDERAL B #1
 LOCATION -280 30N 11W
 SINGLE DK
 ORIG.COMPLETION - 1/64
 LAST FILE UPDATE - 1/92 BY CSW

RECOMMENDED
PxA

PL 2332
 CH 4000'
 MN 4085'
 PL 4679'
 MANCOS 4925'
 GALLUP - 5896'
 GREENTERN - 6630'
 DAKOTA - 6800'

BOT OF 8.625 IN OD CSA 293
 24 LB/FT. W/175 SKS
 CIR TO SURFACE



1ST STAGE w/ 150 SX 21.6EL
 11. HALAP 9
 2ND STAGE w/ 550 SX
 450 SX 50/50 Pozmix CI C +
 89.6EL
 100 SX 50/50 Pozmix CI C +
 49.6EL

BOT OF 2 IN OD TBG AT 6891
 OR 2 3/8"

DK-2JSPF PERF 6804-6824
 6856 6865-6866
 6890-6894
 6901-6903
 6908-6912

BOT OF 4.5 IN OD CSA 7016
 10.5 LB/FT. W/700 SKS
 CSA 7016 11.6 LB/FT
 JSS

FILENAME:
 3144

LOGS: IES - 6500' - SURF - 1/3/64