

FROM :

FAX NO. :

May. 04 2000 04:33PM P1

Date: May 28, 2002
To: Charlie Perrin
Company: N.M. OCD
Fax: 505-334-6170
Voice: 505-334-6178
From: Ron Sansoni
Company: BP
Voice: 970-946-0621

Subject: Pressure test chart for MIT on Ludwick ALS #1

Charlie,

Here is a copy of the pressure test chart for MIT on the subject well.

30-045-09205
E-29-30-10W

TA
J

Thank you,

Ron Sansoni

8. Ancillary Facilities

To the best of our knowledge, no ancillary facilities will be needed at this time.

9. Well Site Layout

A - C Cross-sections etc. See Exhibit D. Exact location of rig related equipment will be determined when Amoco contracts a drilling rig; however, all this equipment will be contained on location. The location diagram reflects actual area of well pad. Total disturbed area will vary due to cut and fill slopes.

D. Reserve Pit(s):

Unlined _____

Lined X (8-10 mil reinforced plastic, size sufficient to cover pit area and fit underneath a rig tank.)

10. Plans for Restoration of Surfaces

Restoration of the surface will be conducted after the reserve pit has dried. The pit will then be cleaned up and back filled and the entire disturbed area will be re-contoured. The topsoil stockpile will then be uniformly placed over this area and reseeding of the site will be carried out as instructed by the appropriate management agency. Methods to protect against erosion will be employed. After final abandonment, additional restoration efforts will be applied.

11. Surface Ownership:

Bureau of Land Management

12. Other Information

A. General Description

1. Archaeological clearance, topography, soil character, and flora and fauna are detained in the archeologist's report forwarded by an approved contact archaeologist to the appropriate management agency.
2. Land uses include recreation, grazing and oil and gas development.

13. Operator's Representative and Certification

Amoco Production Company
Lori Tomberlin, Resource Manager
P. O. Box 3092
Houston, TX 77253

I hereby certify that I, or persons under my direct supervision, have inspected the proposed drill site and access route; that I am familiar with the conditions which presently exist; that the statements made in this plan area, to the best of my knowledge, are true and correct; and, that the work associated with the operations proposed herein will be performed by AMOCO PRODUCTION COMPANY and its contractors and sub-contractors in conformity with this plan and the terms and conditions under which it is approved.

Date: 03/11/2002

By Mary Corley

For Lori Tomberlin, Resource Manager

FAX NO. :

FROM :

5:27
Dan Bards

5:34:00
Santa Hernandez
Key 2 66

Boat 3000
Circuit 24 400

Pressure 1000
HMA 30 minutes

For 1000
500 24 2 30N
30 045 0920

Apr 30 045 0920

TEJAS

TEJAS Clock Instruments, Inc.

METER NUMBER

TIME PUT ON
6:05 PM
DATE PUT ON

MAY 2 2000

LUBWICK LS 1

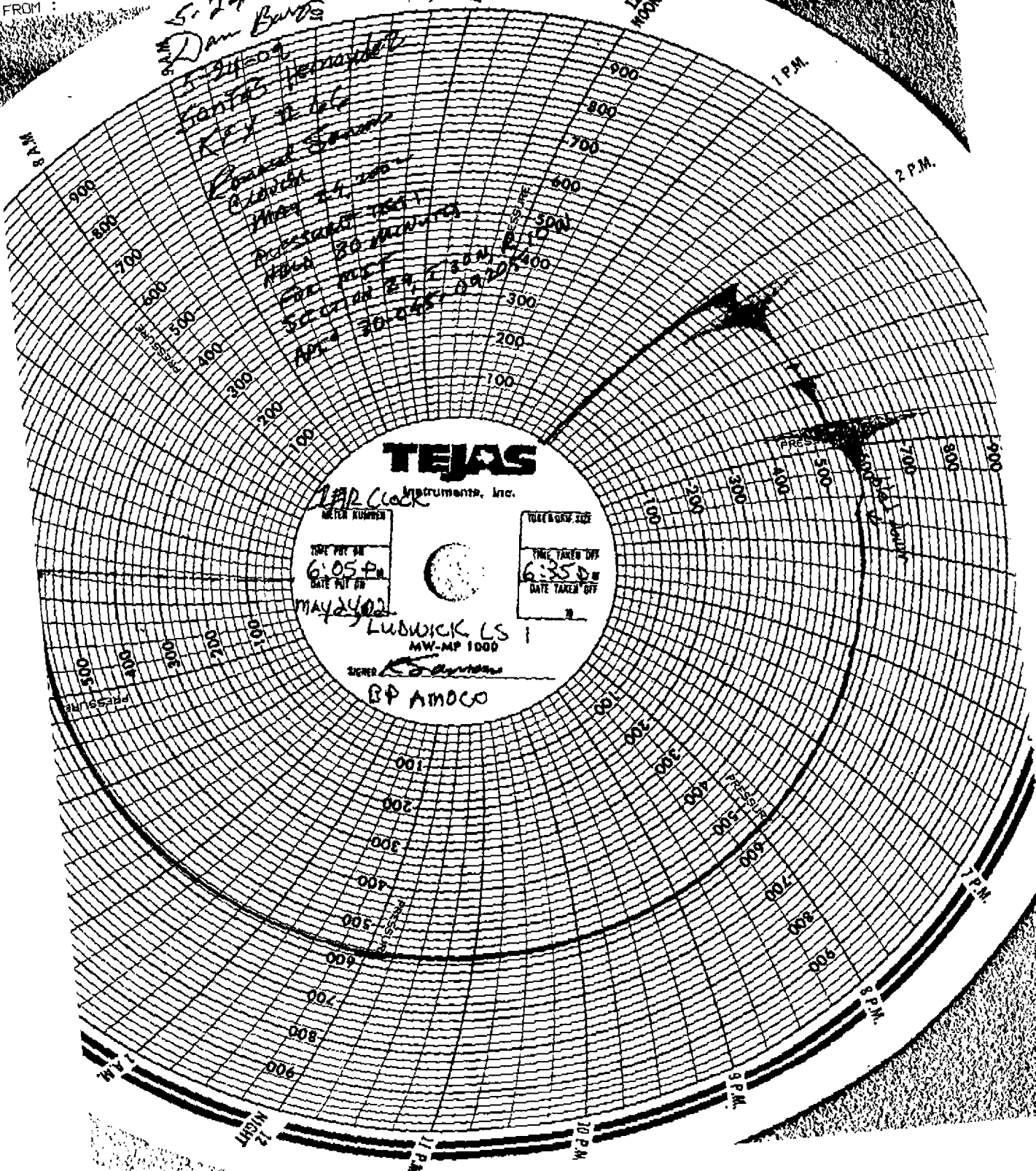
MW-MP 1000

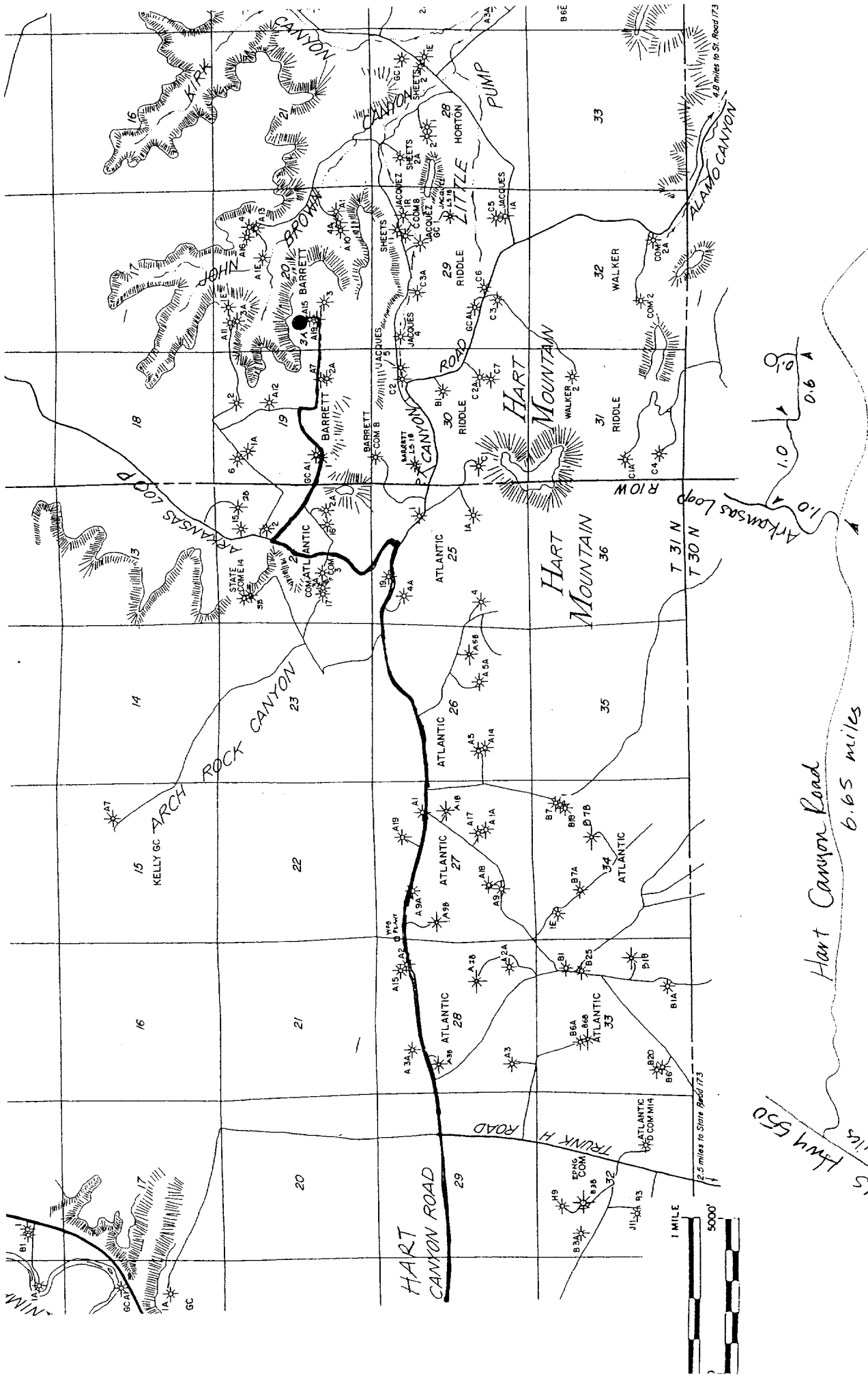
SIGNED *[Signature]*

BP AMOCO

TIME TAKEN OFF

6:35 PM
DATE TAKEN OFF





LAT: 36°53.0'

LONG: 107°48.5'

BP AMERICA PRODUCTION COMPANY

Barrett LS #3B

SW 1/4 Sec. 20, T31N, R9W, NMPM

RAIL POINT:

MUD POINT:

CEMENT POINT:

Hart Canyon Road 6.65 miles

US Hwy 550 4.1 miles

