

NEW MEXICO OIL CONSERVATION COMMISSION  
Santa Fe, New Mexico

NOTICE OF INTENTION TO DRILL OR RECOMPLETE

Notice must be given to the District Office of the Oil Conservation Commission and approval obtained before drilling or recompletion begins. If changes in the proposed plan are considered advisable, a copy of this notice showing such changes will be returned to the sender. Submit this notice in QUINTUPLICATE. One copy will be returned following approval. See additional instructions in Rules and Regulations of the Commission.

Farmington, New Mexico  
(Place)

November 12, 1953  
(Date)

OIL CONSERVATION COMMISSION  
SANTA FE, NEW MEXICO

Gentlemen:

You are hereby notified that it is our intention to commence the (Drilling) (Recompletion) of a well to be known as

El Paso Natural Gas Company  
(Company or Operator)

Hartman Pool Unit  
(Lease)

Well No. 1, in NW (Unit)

located 940 feet from the North line and 990 feet from the West line of Section 26, T. 30N, R. 11W, NMPM.  
(GIVE LOCATION FROM SECTION LINE) Aztec Pool, San Juan County

<b>E</b>	C	B	A
E	F	G	H
L	K	J	I
M	N	O	P

If State Land the Oil and Gas Lease is No.

If patented land the owner is Joseph Hartman

Address

We propose to drill well with drilling equipment as follows: Rotary tools to the top of the Pictured Cliffs formation, completing the well with cable tools.

The status of plugging bond is Statewide

Drilling Contractor Company Tools

We intend to complete this well in the Pictured Cliffs formation at an approximate depth of 2350 feet.

CASING PROGRAM

We propose to use the following strings of Casing and to cement them as indicated:

Size of Hole	Size of Casing	Weight per Foot	New or Second Hand	Depth	Sacks Cement
<u>13-3/8"</u>	<u>9-5/8"</u>	<u>25.4</u>	<u>New</u>	<u>120'</u>	<u>100</u>
<u>7-7/8</u>	<u>5-1/2</u>	<u>15.5</u>	<u>New</u>	<u>2286</u>	<u>200</u>

If changes in the above plans become advisable we will notify you immediately.

ADDITIONAL INFORMATION (If recompletion give full details of proposed plan of work.) It is intended to shoot the Pictured Cliffs with two quarts of S.N.G. per foot.

The NW/4 of Section 26 is dedicated to this well.

Commititization will be filed with the State.

(OVER)

Sincerely yours,

Approved 11-16, 19 53  
Except as follows:

EL PASO NATURAL GAS COMPANY  
(Company or Operator)

By [Signature]

Position Petroleum Engineer  
Send Communications regarding well to

Name E. J. Coel

Address Box 997 Farmington, New Mexico

OIL CONSERVATION COMMISSION  
By [Signature]  
Title Asst. Dir. #3

<b>OIL CONSERVATION COMMISSION</b>		
<b>AZTEC DISTRICT OFFICE</b>		
<b>No. Copies Received</b>		<b>7</b>
<b>DISTRIBUTION</b>		
	<b>NO. FURNISHED</b>	
Operator	<b>2</b>	
Santa Fe	<b>1</b>	
Proration Office		
State Land Office	<b>1</b>	
U. S. G. S.	<b>2</b>	
Transporter		
File	<b>1</b>	<b>✓</b>

G. F. Burlington SM/4 MW/4 Murphy et al.  
 Joseph Hartman N/2 MW, SE/4 MW/4 Murphy et al.

COMPANY El Paso Natural Gas Company

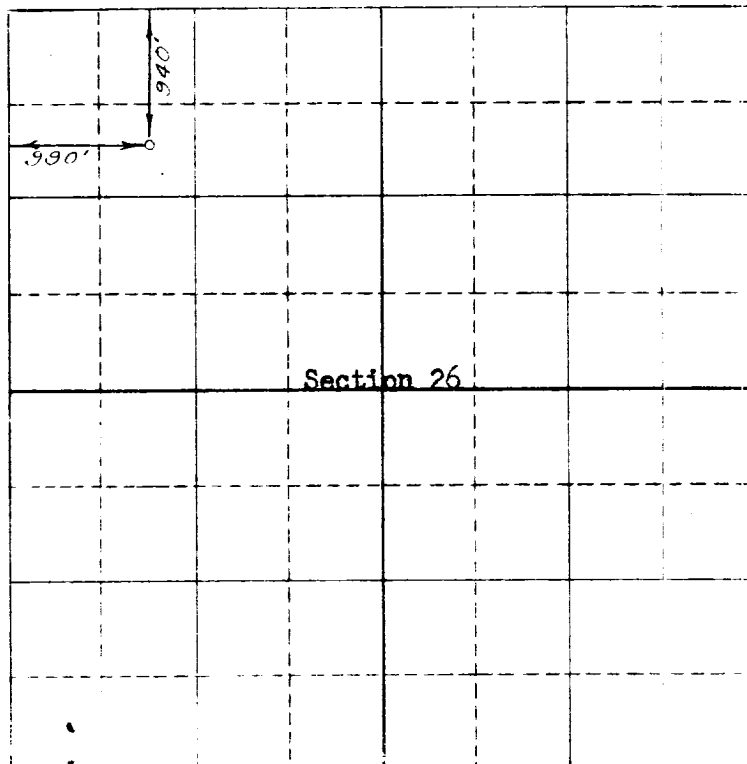
Well Name & No. Hartman Pool Unit No. 1 Lease No. EE3

Location 940 ft. from the north line, 990 ft. from the west line

Being in NW $\frac{1}{4}$  of the NW $\frac{1}{4}$

Sec. 26, T. 30 N., R. 11 W., N.M.P.M., San Juan County, New Mexico

Ground Elevation 5894.02



Scale -- 4 inches equals 1 mile

Dated this October 31, 1953

This is to certify that the above plat was prepared from field notes of actual surveys made by me or under my supervision and that the same are true and correct to the best of my knowledge and belief.

E. O. Walker

Registered Professional  
Engineer and Land Surveyor.

Seal

Farmington, New Mexico

<b>OIL CONSERVATION COMMISSION</b>		
<b>AZTEC DISTRICT OFFICE</b>		
No. Copies Received <u>3</u>		
<b>DISTRIBUTION</b>		
	<b>NO. FURNISHED</b>	
Operator		
Santa Fe	<u>1</u>	
Exploration Office		
State Land Office		
U. S. G. S.	<u>1</u>	
Transporter		
File	<u>1</u>	<u>1</u>