

NEW MEXICO OIL CONSERVATION COMMISSION  
Santa Fe, New Mexico

NOTICE OF INTENTION TO DRILL OR RECOMPLETE

Notice must be given to the District Office of the Oil Conservation Commission and approval obtained before drilling or recompletion begins. If changes in the proposed plan are considered advisable, a copy of this notice showing such changes will be returned to the sender. Submit this notice in QUINTUPPLICATE. One copy will be returned following approval. See additional instructions in Rules and Regulations of the Commission.

Farmington, New Mexico  
(Place)

March 30, 1953  
(Date)

OIL CONSERVATION COMMISSION  
SANTA FE, NEW MEXICO

Gentlemen:

You are hereby notified that it is our intention to commence the (Drilling) (Recompletion) of a well to be known as  
**El Paso Natural Gas Company**

(Company or Operator)

Bruington Pool Unit, Well No. 1, in SE The well is  
(Lease) (Unit)  
located 990 feet from the South line and 1650 feet from the  
East line of Section 20, T. 30N, R. 11W, NMPM.  
(GIVE LOCATION FROM SECTION LINE) Astec Pool, San Juan County

If State Land the Oil and Gas Lease is No. Free

If patented land the owner is G. Bruington

Address: Astec, New Mexico (W 1/2 SE 1/4)

We propose to drill well with drilling equipment as follows: Rotary tools to top of Pictured Cliffs formation, completing well with cable tools.

The status of plugging bond is State Wide Bond

Drilling Contractor El Paso Natural Gas Company

We intend to complete this well in the Pictured Cliffs formation at an approximate depth of 2205 feet.

Elev. 5787' Gr., 5797' IF.

Total depth 2205'

CASING PROGRAM

We propose to use the following strings of Casing and to cement them as indicated:

Size of Hole	Size of Casing	Weight per Foot	New or Second Hand	Depth	Sacks Cement
12-3/4	9-5/8	25.4	New	100	75
7-7/8	5-1/2	15.5	New	2138	150

If changes in the above plans become advisable we will notify you immediately.

ADDITIONAL INFORMATION (If recompletion give full details of proposed plan of work.)

It is intended to shoot the well with two quarts S.N.G. per foot.

The SE 1/4 of Section 20 is dedicated to this well.

(E 1/2 of SE 1/4 Federal land SF 078138 - Murphy Corporation, El Dorado, Arkansas)

Communitization will be filed as soon as possible.

Approved 4-2, 19 53

Except as follows:

Sincerely yours,

**EL PASO NATURAL GAS COMPANY**  
(Company or Operator)

By [Signature]

Position Petroleum Engineer

Send Communications regarding well to

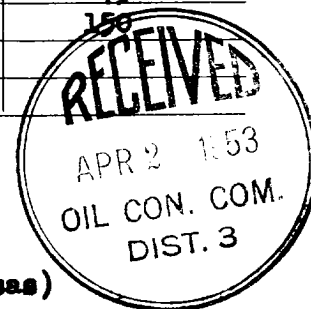
Name E. J. Coal

Address Box 997, Farmington, New Mexico

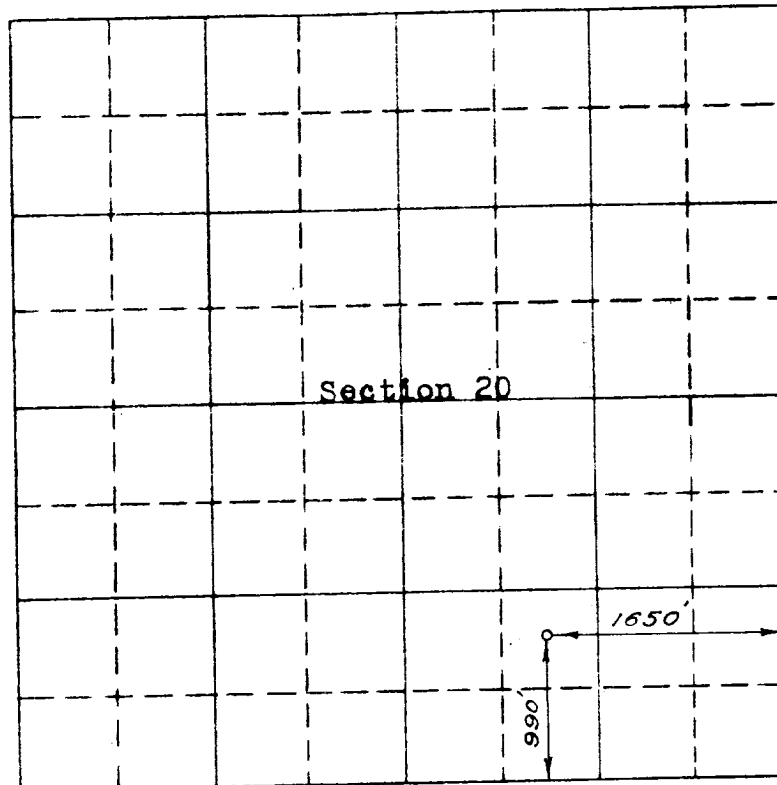
OIL CONSERVATION COMMISSION

By Emory C. Arnold

Title Oil and Gas Inspector Dist. #3.



COMPANY EL PASO NATURAL GAS COMPANY  
Well Name & No. Farmington Pool Unit #1 Lease No. Fee  
Location 990 feet from the South line. 1650 feet from the East line.  
Being in SW<sup>1</sup> of the SE<sup>1</sup>  
Sec. 20, T 30N., R 11W., N.M.P.M., San Juan County, New Mexico  
Ground Elevation 5787.14



N  
|  
|  
|  
|  
|  
|  
|  
|  
|  
|

Scale -- 4 inches equals 1 mile

Surveyed March 20, 19 53

This is to certify that the above plat was prepared from field notes of actual surveys made by me or under my supervision and that the same are true and correct to the best of my knowledge and belief.

E. O. Walker

Registered Professional  
Engineer and Land Surveyor.

Seal:

Farmington, New Mexico



<b>OIL CONSERVATION COMMISSION</b>		
<b>AZTEC DISTRICT OFFICE</b>		
No. Copies Received <u>6</u>		
<b>DISTRIBUTION</b>		
	<b>NO. FURNISHED</b>	
Operator	<u>1</u>	
Santa Fe	<u>1</u>	
Proration Office		
State Land Office	<u>1</u>	
U. S. G. S.	<u>2</u>	
Transporter		
File	<u>1</u>	<input checked="" type="checkbox"/>