

NEW MEXICO OIL CONSERVATION COMMISSION

Santa Fe, New Mexico

NOTICE OF INTENTION TO DRILL OR RECOMPLETE

Notice must be given to the District Office of the Oil Conservation Commission and approval obtained before drilling or recompletion begins. If changes in the proposed plan are considered advisable, a copy of this notice showing such changes will be returned to the sender. Submit this notice in **QUINTUPLICATE**. One copy will be returned following approval. See additional instructions in Rules and Regulations of the Commission. **If State Land submit 6 Copies**

Farmington, New Mexico
(Place)February 10, 1956
(Date)OIL CONSERVATION COMMISSION
SANTA FE, NEW MEXICO

Gentlemen:

You are hereby notified that it is our intention to commence the (Drilling) (~~Recompletion~~) of a well to be known as**El Paso Natural Gas Company**
(Company or Operator)**Morris**
(Lease)**6-A****L**
(Unit)The well is located **1550** feet from the **South** line and **990** feet from the **West** line of Section **21**, T. **30N**, R. **11W**, NMPM.

(GIVE LOCATION FROM SECTION LINE)

Astec P.C.

Pool,

San Juan

County

If State Land the Oil and Gas Lease is No. **Fee**If patented land the owner is **Myron F. Pifield**

Address

We propose to drill well with drilling equipment as follows: **Rotary tools to top of Pictured Cliff formation and cable tools thru formation.**The status of plugging bond is **Statewide**Drilling Contractor **Company tools**We intend to complete this well in the **Pictured Cliff** formation at an approximate depth of **2220** feet.

CASING PROGRAM

We propose to use the following strings of Casing and to cement them as indicated:

Size of Hole	Size of Casing	Weight per Foot	New or Second Hand	Depth	Sacks Cement
13 3/4"	9 5/8"	25.4#	New	120	125
8 3/4"	7"	20#	New	2147	150

If changes in the above plans become advisable we will notify you immediately.

ADDITIONAL INFORMATION (If recompletion give full details of proposed plan of work.) **It is proposed to water fracture the entire Pictured Cliff formation. The SW/4 of Section 21 is dedicated to this well. SW/4, SP 078138 (SESW), M. Sullivan (NWSW) Fee Myron F. Pifield (W/2SW) Fee.**

Approved
Except as follows:

2-13, 1956

Sincerely yours,

El Paso Natural Gas Company
(Company or Operator)

By

Petroleum Engineer

Position. Send Communications regarding well to

Name **E. J. Coal**Address **Box 997, Farmington, N.M.**

OIL CONSERVATION COMMISSION

By

E. J. Coal

OIL CONSERVATION COMMISSION		
AZTEC DISTRICT OFFICE		
No. Copies Received <u>6</u>		
DISTRIBUTION		
	NO. FURNISHED	
Operator	<u>2</u>	
Santa Fe	<u>1</u>	
Production Office		
State Land Office		
U. S. G. S.	<u>2</u>	
Transporter		
File	<u>1</u>	<input checked="" type="checkbox"/>

Handwritten signature or scribble

COMPANY EL PASO NATURAL GAS COMPANY

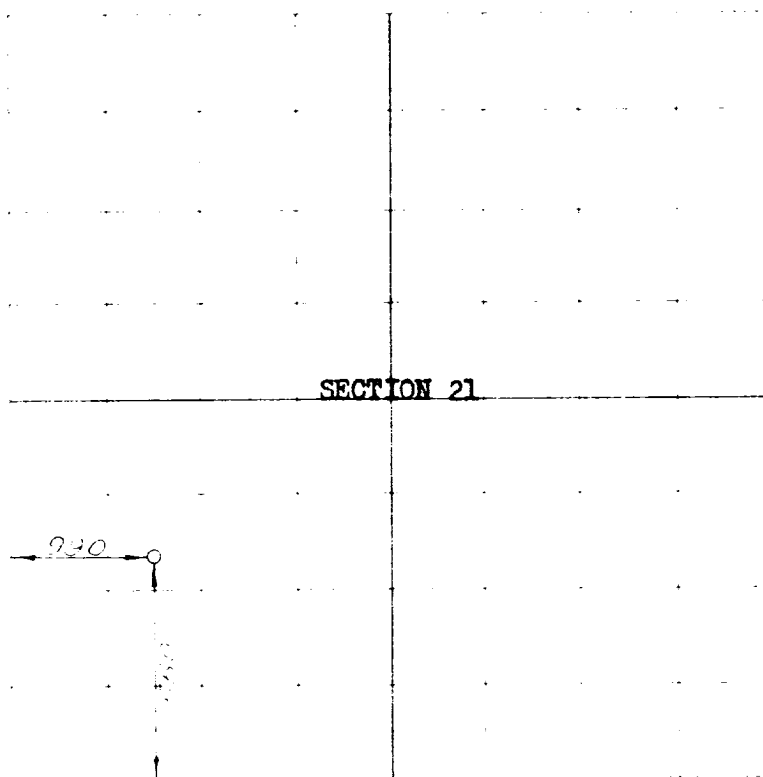
MORRIS NO. 6-4 FEE

1550 FEET FROM THE SOUTH LINE, 990 FEET FROM THE WEST LINE

NW/4 OF THE SW/4

21 301, 11 SAN JUAN COUNTY, NEW MEXICO

5790⁶⁴



FEBRUARY 2 56

The undersigned, being duly qualified, do hereby certify that the foregoing is a true and correct copy of the original record of the same as the same appears in the records of the County Clerk of San Juan County, New Mexico.

C. O. Walker
County Clerk, San Juan County, New Mexico

San Juan County, New Mexico

160 ACRES, SW/4 SECTION (PLAT)

RECREATION COMMISSION		
DISTRICT OFFICE		
District Number <u>6</u>		
RECREATION		
	NO FUNDING	
Deputy	2	
Secretary	1	
President Gilio		
Vice Pres Gilio		
U.S.G.S.	2	
Transporter	1	✓
File		