

NEW MEXICO OIL CONSERVATION COMMISSION  
Santa Fe, New Mexico

NOTICE OF INTENTION TO DRILL OR RECOMPLETE

Notice must be given to the District Office of the Oil Conservation Commission and approval obtained before drilling or recompletion begins. If changes in the proposed plan are considered advisable, a copy of this notice showing such changes will be returned to the sender. Submit this notice in QUINTUPLICATE. One copy will be returned following approval. See additional instructions in Rules and Regulations of the Commission.

AZTEC, NEW MEXICO  
(Place)

JULY 19, 1954  
(Date)

OIL CONSERVATION COMMISSION  
SANTA FE, NEW MEXICO

Gentlemen:

You are hereby notified that it is our intention to commence the (Drilling) (~~Recompletion~~) of a well to be known as

W. P. CARR

(Company or Operator)

SUTTON

(Lease)

Well No. 1, in (Unit) The well is

located 990 feet from the WEST line and 1090 feet from the

NORTH line of Section 18, T. 30 N., R. 11 W., NMPM.

(GIVE LOCATION FROM SECTION LINE) AZTEC PICTURED CLIFF Pool, SAN JUAN County

If State Land the Oil and Gas Lease is No.

If patented land the owner is.

Address.

We propose to drill well with drilling equipment as follows: WE WILL SET SURFACE CASING WITH CABLE TOOLS, ALL OTHER DRILLING WITH ROTARY

The status of plugging bond is APPROVED

Drilling Contractor GREER-SMITH DRILLING CORP.  
315 1/2 W. MAIN ST.,  
FARMINGTON, NEW MEXICO

We intend to complete this well in the PICTURED CLIFF FORMATION formation at an approximate depth of 1975 feet.

CASING PROGRAM

We propose to use the following strings of Casing and to cement them as indicated:

Size of Hole	Size of Casing	Weight per Foot	New or Second Hand	Depth	Sacks Cement
12-5/8	8- 5/8	24	NEW	80-150	CIRCULATE
7-7/8	5- 1/2	15.5	NEW	1975	50-150 sx.

If changes in the above plans become advisable we will notify you immediately.

ADDITIONAL INFORMATION (If recompletion give full details of proposed plan of work.)

WE WILL DRILL THROUGH THE PICTURED CLIFF FORMATION WITH ROTARY TOOLS. AFTER ELECTRIC LOGGING WE WILL SET 5 1/2 CASING ON TOP PRODUCING ZONE. WE WILL SHOOT THE INDICATED SECTION USING 2 1/2 TO 4 QTS. SOLID NITROGLYCERIN PER FOOT.

Approved.....  
Except as follows:

7-2, 1954

Sincerely yours,

W. P. CARR

(Company or Operator)

By C. R. Short

Position SUPT.

Send Communications regarding well to

Name W. P. CARR

Address 6700 FOREST LANE  
DALLAS 30, TEXAS

OIL CONSERVATION COMMISSION

By

Title Oil and Gas Inspector Dist. #3.

Company W. P. CARR

Lease SUTTON

Well No. 1

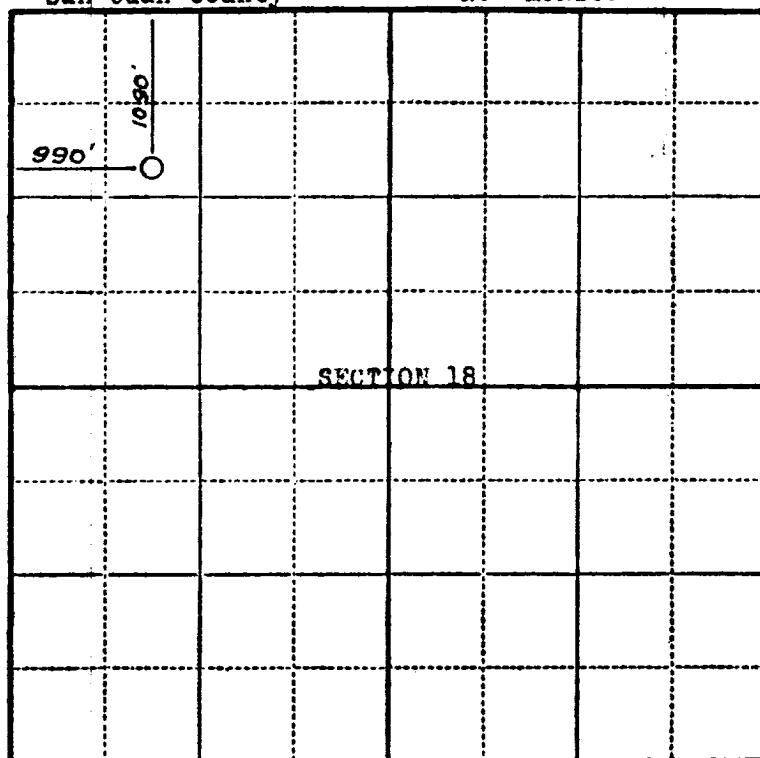
Sec. 18 T. 30 N R. 11 W N.M.P.M.

Location 1090 feet from north line; 990 feet  
from west line.

Elevation: 5583.1 GL.

San Juan County

New Mexico



Scale—4 inches equal 1 mile.

This is to certify that the above plat was prepared from field notes of actual surveys made by me or under my supervision and that the same are true and correct to the best of my knowledge and belief.

*Stephen H. Kinney*  
STEPHEN H. KINNEY  
Registered Professional  
Engineer and Land Surveyor

Surveyed July 9, 19 54

Seal:

NEW MEXICO  
OIL CONSERVATION COMMISSION

Gas Well Plat

Date July 19, 1934

W. P. Carr  
Operator

Sutton  
Lease

No. 1  
Well No.

Name of Producing Formation PICTURED CLIFF Pool APES PICTURED CLIFF

No. Acres Dedicated to the Well 160

Indicate land status and show ownership

SECTION 18 TOWNSHIP 30 N. RANGE 11 W.

A. J. AND NELL HALL	B. W. SUTTON	LOVIE GALLAWAY BILLISPIE		
JAMES F. SCOTT AND LELA SCOTT				

I hereby certify that the information given above is true and complete to the best of my knowledge.

Name C. R. Short  
Position Supt  
Representing W. P. Carr  
Address 6700 Forest Lane Dallas Tex

(over)

OIL CONSERVATION COMMISSION		
AZTEC DISTRICT OFFICE		
No. Copies Received <u>5</u>		
DISTRIBUTION		
	NO. FURNISHED	
Operator	<u>1</u>	
Santa Fe	<u>1</u>	
Protraction Office		
State Land Office		
U. S. G. S.	<u>2</u>	
Transporter		
File	<u>1</u>	<input checked="" type="checkbox"/>