

RECEIVED

MAR 13 1953

COMPANY BOLACK OIL COMPANY

GEOLOGICAL SURVEY

Well Name & No. Bolack No. 1

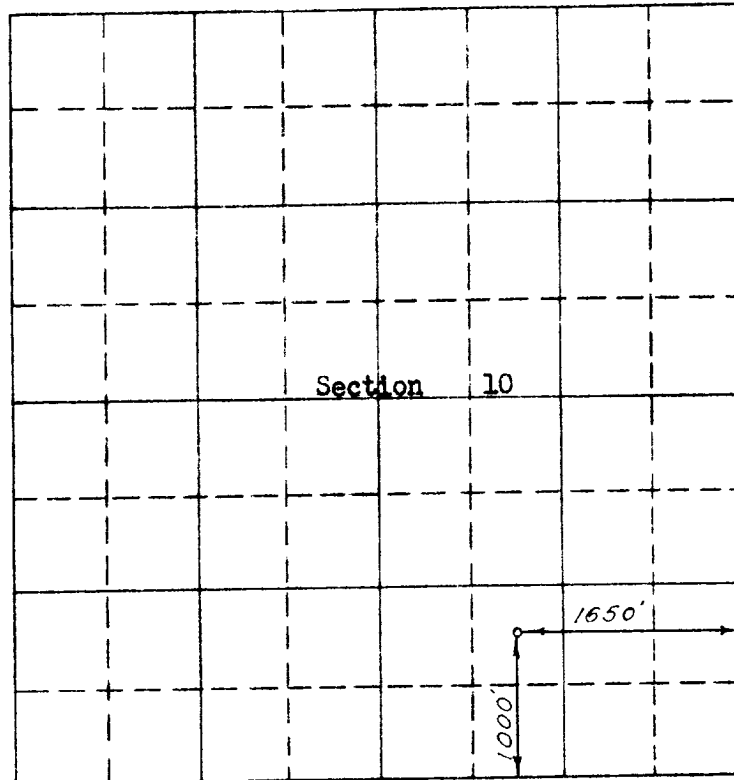
Lease No. SR078811

Location 1000 feet from the South line. 1650 feet from the East line.

Being in The SW $\frac{1}{4}$ of the SE $\frac{1}{4}$

Sec. 10, T 30N., R 11W., N.M.P.M., San Juan County, New Mexico

Ground Elevation 5799.24



Scale -- 4 inches equals 1 mile

Surveyed February 1, 19 53

This is to certify that the above plat was prepared from field notes of actual surveys made by me or under my supervision and that the same are true and correct to the best of my knowledge and belief.

C. O. Zalken

Registered Professional

Engineer and Land Surveyor

Seal:

Farmington, New Mexico

