

NEW MEXICO OIL CONSERVATION COMMISSION
Santa Fe, New Mexico

NOTICE OF INTENTION TO DRILL OR RECOMPLETE

Notice must be given to the District Office of the Oil Conservation Commission and approval obtained before drilling or recompletion begins. If changes in the proposed plan are considered advisable, a copy of this notice showing such changes will be returned to the sender. Submit this notice in QUINTUPLICATE. One copy will be returned following approval. See additional instructions in Rules and Regulations of the Commission.

Dallas, Texas

(Place)

May 5, 1954

(Date)

OIL CONSERVATION COMMISSION
SANTA FE, NEW MEXICO

Gentlemen:

You are hereby notified that it is our intention to commence the (Drilling) (~~RECOMPLETION~~) of a well to be known as

W. P. Carr

(Company or Operator)

Utten

(Lease)

, Well No. 1, in _____, The well is

(Unit)

located 1850 feet from the South line and 1059 feet from the

West

line of Section 7, T. 30N, R. 11W, NMPM.

(GIVE LOCATION FROM SECTION LINE) Aztec Pictured Cliffs Pool, San Juan County

If State Land the Oil and Gas Lease is No.

If patented land the owner is Clyde Utten

Address Aztec, New Mexico

We propose to drill well with drilling equipment as follows: Will set surface casing with cable tools; all other drilling with rotary.

The status of plugging bond is approved.

Drilling Contractor Greer-Smith Drilling Corp.

315 1/2 W. Main St.

Farmington, New Mexico

We intend to complete this well in the Pictured Cliffs formation

formation at an approximate depth of 2075 feet.

CASING PROGRAM

We propose to use the following strings of Casing and to cement them as indicated:

Size of Hole	Size of Casing	Weight per Foot	New or Second Hand	Depth	Sacks Cement
12-5/8"	8-5/8"	28#	New	80-150'	To circulate
7-7/8"	5-1/2"	14#	New	2000'	60-150 sacks

If changes in the above plans become advisable we will notify you immediately.

ADDITIONAL INFORMATION (If recompletion give full details of proposed plan of work.)

We will drill through the Pictured Cliffs formation with rotary tools. After electric logging we will set 5 1/2" casing on top of the producing zone. We will shoot the indicated sections using 2 1/2 to 4 qts. of solid nitroglycerin per foot.

Approved _____, 19____
Except as follows: MAY 11 1954

Sincerely yours,

W. P. Carr

(Company or Operator)

By _____

Position Operator

Send Communications regarding well to

Name W. P. Carr

Address 6700 Forest Lane

Dallas 30, Texas

OIL CONSERVATION COMMISSION

Original signed by

By John J. Abendschan

Title PETROLEUM ENGINEER DIST. NO. 3

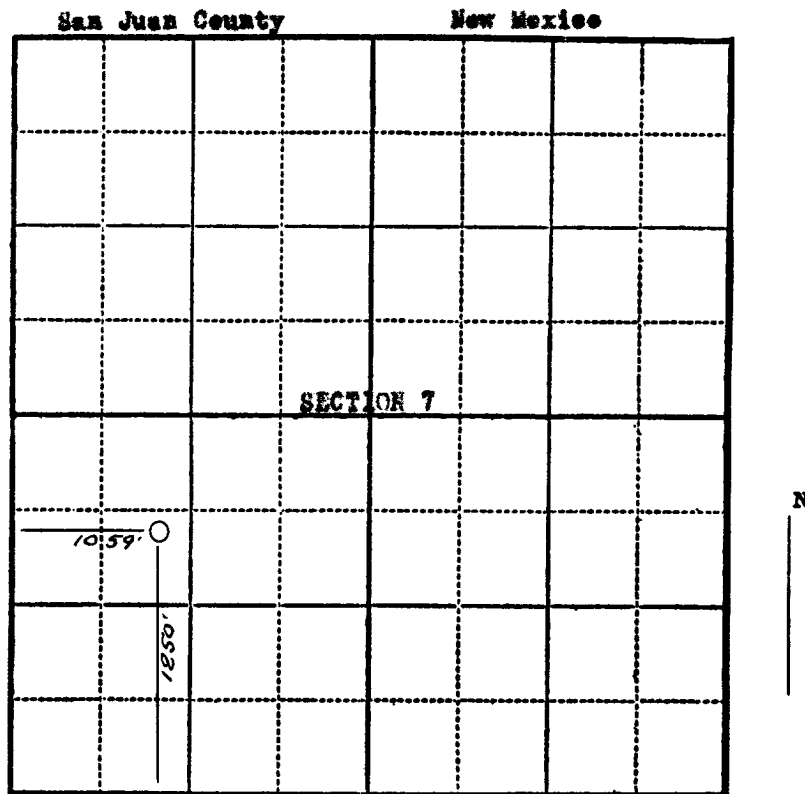
Company W.P.Carr

Lease Utten Well No. 1

Sec. 7, T. 40N, R. 11W

Location 1850 feet from south line; 1859 feet
from west line.

Elevation: 5640.2 OL



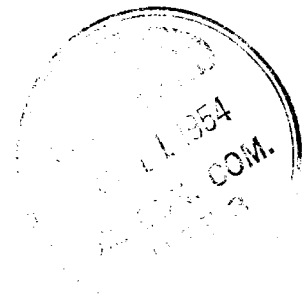
Scale—4 inches equal 1 mile.

This is to certify that the above plat was prepared from field notes of actual surveys made by me or under my supervision and that the same are true and correct to the best of my knowledge and belief.

Stephen H. Kinney

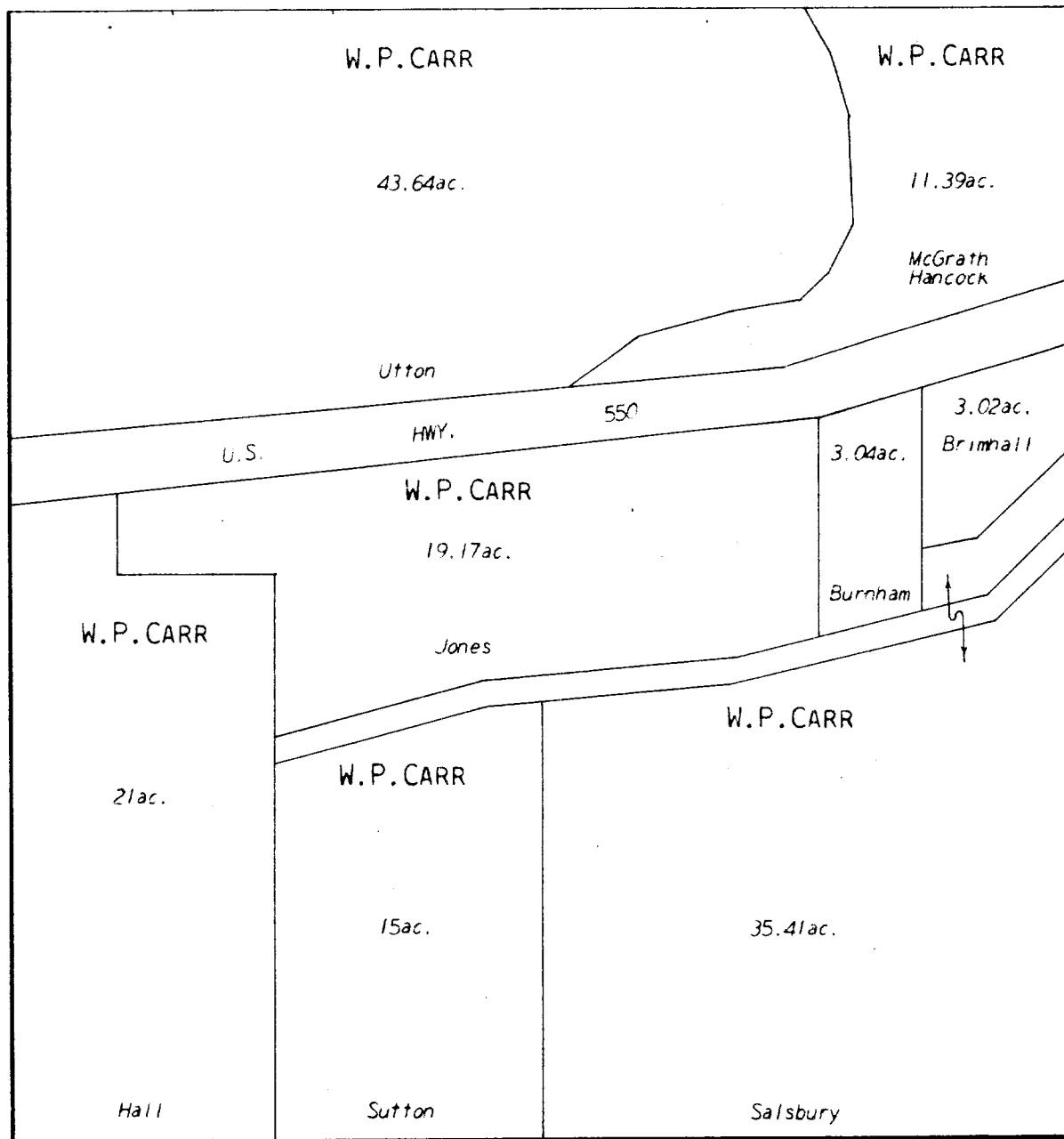
Seal:

Registered Professional
Engineer and Land Surveyor.

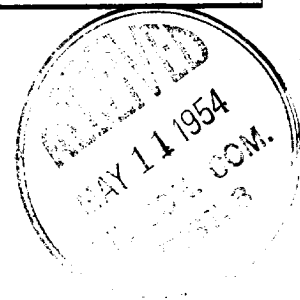


Surveyed April 9, 19 54

SW 1/4 SECTION 7
TWP 30 N R 11 W



Scale: 1 inch = 400 feet



OIL CONSERVATION COMMISSION		
AZTEC DISTRICT OFFICE		
No. Copies Received <u>5</u>		
DISTRIBUTION		
	NO. FURNISHED	
Operator	<u>1</u>	
Santa Fe	<u>1</u>	
Proration Office		
State Land Office		
U. S. G. S.	<u>2</u>	
Transporter		
File	<u>1</u>	<input checked="" type="checkbox"/>