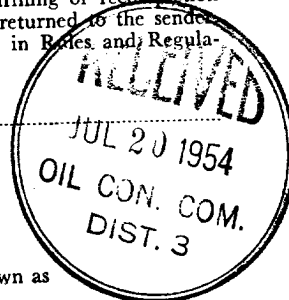


NEW MEXICO OIL CONSERVATION COMMISSION  
Santa Fe, New Mexico

NOTICE OF INTENTION TO DRILL OR RECOMPLETE

Notice must be given to the District Office of the Oil Conservation Commission and approval obtained before drilling or recompletion begins. If changes in the proposed plan are considered advisable, a copy of this notice showing such changes will be returned to the sender. Submit this notice in QUINTUPPLICATE. One copy will be returned following approval. See additional instructions in Rules and Regulations of the Commission.

JULY 19, 1954



ASTEEO, NEW MEXICO (Place)

OIL CONSERVATION COMMISSION  
SANTA FE, NEW MEXICO

Gentlemen:

You are hereby notified that it is our intention to commence the (Drilling) (Recompletion) of a well to be known as

W. P. CARR

(Company or Operator)

JENSEN

(Lease)

, Well No. 1, in (Unit) The well is

located 1827 feet from the SOUTH line and 790 feet from the

EAST line of Section 12, T. 30 N., R. 12 W., NMPM. County

(GIVE LOCATION FROM SECTION LINE)

ASTEEO PICTURE CLIFF

SAN JUAN

If State Land the Oil and Gas Lease is No.

If patented land the owner is JENSEN, ET AL.

Address ASTEEO, NEW MEXICO

We propose to drill well with drilling equipment as follows:

WILL SET SURFACE CASING

WITH CABLE TOOLS, ALL OTHER DRILLING WITH ROTARY.

The status of plugging bond is APPROVED

Drilling Contractor GREEN-SMITH DRILLING CORP.

315 1/2 W. MAIN ST.

FARMINGTON, NEW MEXICO

We intend to complete this well in the PICTURED CLIFFS FORMATION

formation at an approximate depth of 2000 feet.

CASING PROGRAM

We propose to use the following strings of Casing and to cement them as indicated:

Size of Hole	Size of Casing	Weight per Foot	New or Second Hand	Depth	Sacks Cement
12-5/8	8-5/8	24	NEW	80-150	CIRCULATE
7-7/8	5-1/2	15.5	NEW	2000	50 TO 100 8x.

If changes in the above plans become advisable we will notify you immediately.

ADDITIONAL INFORMATION (If recompletion give full details of proposed plan of work.)

WE WILL DRILL THROUGH THE PICTURED CLIFF FORMATION WITH ROTARY TOOLS.  
AFTER ELECTRIC LOGGING WE WILL SET 5 1/2" CASING ON TOP THE PRODUCING ZONE.  
WE WILL SHOOT THE INDICATED SECTIONS USING 2 1/2 TO 4 QUARTS OF SOLID NITROGLYCERIN  
PER FOOT.

Approved  
Except as follows:

Sincerely yours,

W. P. CARR (Company or Operator)

By

Position Supt. Communications regarding well to

Name

Address W. P. CARR  
6700 FOREST LANE  
DALLAS 30, TEXAS

By

Title

Oil and Gas Inspector Dist. #3.

DON Y. AND MARY MARGARET JENSEN, AZTEC, NEW MEXICO	88.24 ACRES
R. DEAN AND KATE BERNICE STANDAGE, AZTEC, NEW MEXICO	18.5 ACRES
HALD SMITH, AZTEC, NEW MEXICO	10.98 ACRES
T. C. BURRELL AND HAZEL BURRELL, SPRINGFIELD, MO.	4.65 ACRES
JAMES F. AND LELA SCOTT, AZTEC, NEW MEXICO	23.25 ACRES
SAMUEL A. AND MARIA PITTMAN, AZTEC, NEW MEXICO	4.5 ACRES
ARTHUR C. SCOTT, DECEASED.	6.77 ACRES
ETHEL VAN DUSEN, AZTEC, NEW MEXICO	1 ACRE

NEW MEXICO  
OIL CONSERVATION COMMISSION

Gas Well Plat

Date JULY 20, 1954

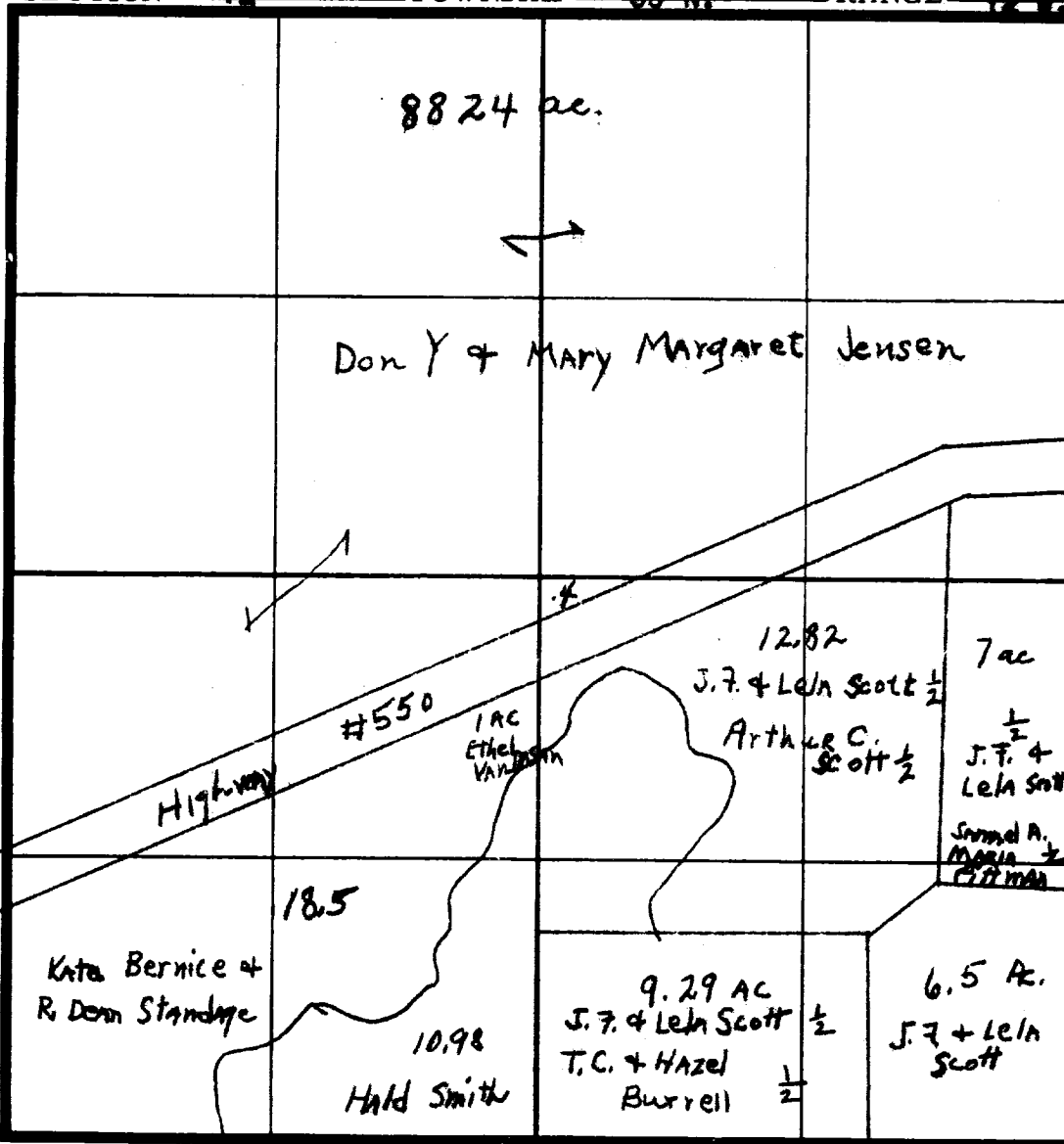
W. P. Carr JENSEN # 1  
Operator Lease Well No.

Name of Producing Formation PICTURED CLIFF Pool ARTES PICTURED CLIFF

No. Acres Dedicated to the Well 157.68

Indicate Land Ownership Status. (Federal, State, Patented)

SECTION 12 TOWNSHIP 30 N. RANGE 12 W.



I hereby certify that the information given above is true and complete to the best of my knowledge.

Name C. R. Short  
Position Supt  
Representing W. P. Carr  
Address Dallas Tex

(over)



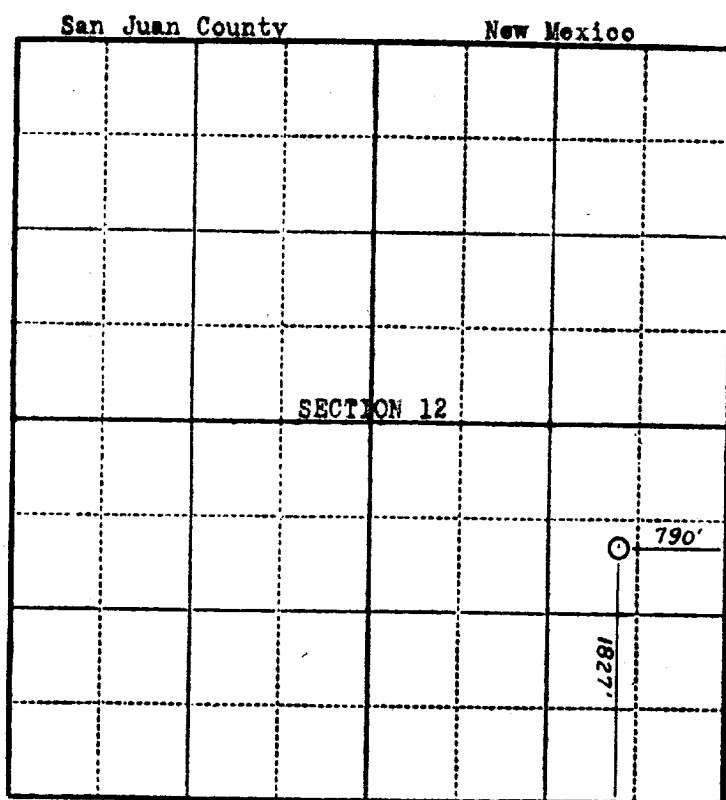
Company W. P. CARR

Lease JENSEN Well No. 1

Sec. 12 T. 30 N R. 12 W N.M.P.M.

Location 1827 feet from south line; 790 feet  
from east line.

Elevation: 5686.1 GL



Scale—4 inches equal 1 mlie.

This is to certify that the above plat was prepared from field notes of actual surveys made by me or under my supervision and that the same are true and correct to the best of my knowledge and belief.

*Stephen H. Kinney*

STEPHEN H. KINNEY  
Registered Professional  
Engineer and Land Surveyor

Surveyed July 6, 19 54

Seal:

OIL CONSERVATION COMMISSION

AZTEC DISTRICT OFFICE

No. Copies Received 5

DISTRIBUTION

	NO. FURNISHED	
Operator	1	
Santa Fe	1	
Proration Office		
State Land Office		
U. S. G. S.	2	
Transporter		
File	1	✓