

NEW MEXICO OIL CONSERVATION COMMISSION
Santa Fe, New Mexico

NOTICE OF INTENTION TO DRILL OR RECOMPLETE

Notice must be given to the District Office of the Oil Conservation Commission and approval obtained before drilling or recompletion begins. If changes in the proposed plan are considered advisable, a copy of this notice showing such changes will be returned to the sender. Submit this notice in QUINTUPLICATE. One copy will be returned following approval. See additional instructions in Rules and Regulations of the Commission.

Dallas, Texas

May 5, 1954

(Place)

(Date)

OIL CONSERVATION COMMISSION
SANTA FE, NEW MEXICO

Gentlemen:

You are hereby notified that it is our intention to commence the (Drilling) () of a well to be known as

(Company or Operator)

1

(Lease)

North

(Unit)

located feet from the line and feet from the

line of Section T, R. NMPM.

(GIVE LOCATION FROM SECTION LINE)

Pool, County

If State Land the Oil and Gas Lease is No.

If patented land the owner is

Address

We propose to drill with drilling equipment as follows

The status of plugging bond is

Drilling Contractor

We intend to complete this well in the

formation at an approximate depth of feet.

CASING PROGRAM

We propose to use the following strings of Casing and to cement them as indicated:

Size of Hole	Size of Casing	Weight per Foot	New or Second Hand	Depth	Sacks Cement
12-1/8"	12-1/8"	8	Ne	80-120'	to circulate
7-7/8"	6-1/2"	14	Ne	2075'	consider 2000

If changes in the above plans become advisable we will notify you immediately.

ADDITIONAL INFORMATION (If recompletion give full details of proposed plan of work.)

we will drill through the Pictured Cliffs formation with rotary tool.
After electric logging we will set 8 1/2" casing on top of the preceding zone.
We will shoot the indicated section using 2 1/2 to 4 lbs of solid nitroglycerin
per foot.

Approved
Except as follows:

Sincerely yours,

J. P. Carr

By

(Company or Operator)

Position

Send Communication regarding well to

Name

Address

OIL CONSERVATION COMMISSION

By

Title

Oil and Gas Inspector Dist. #3

OIL CONSERVATION COMMISSION		
AZTEC DISTRICT OFFICE		
No. Copies Received		5
DISTRIBUTION		
	NO. COPIES	
Operator	/	
Santa Fe	/	
Protective Office		
State Land Office	/	
U. S. G. B.	/	
Transporter		
File	/	✓

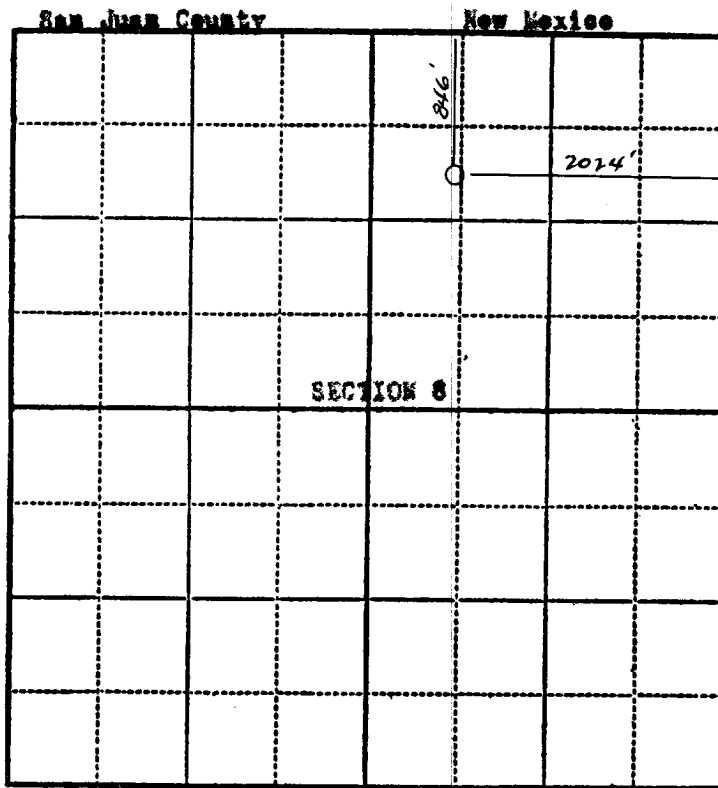
Company W.F.Carr

Lease Hartman Well No. 1

Sec. 8, T. 30N, R. 11E

Location 846 feet from north line; 2024 feet
from east line.

Elevation: 5662.7 GL



Scale—4 inches equal 1 mile.

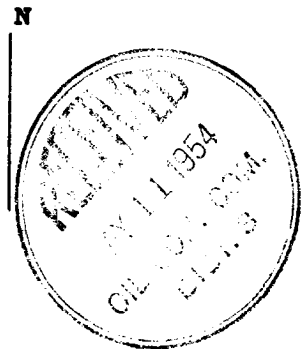
This is to certify that the above plat was prepared from field notes of actual surveys made by me or under my supervision and that the same are true and correct to the best of my knowledge and belief.

Stephen H. Lindsey

Seal:

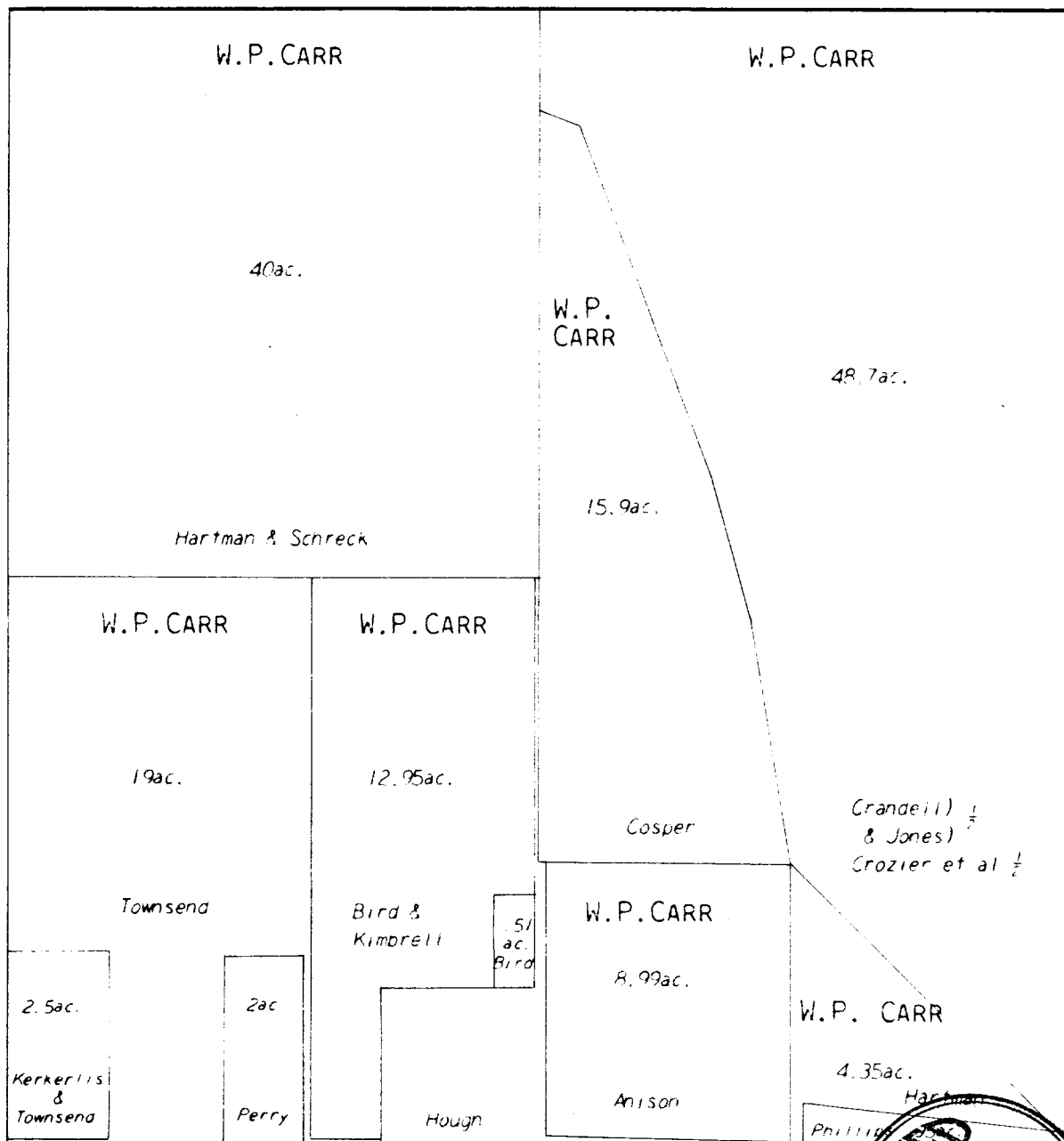
Registered Professional
Engineer and Land Surveyor.

Surveyed April 7, 19 54



NE 1/4 SECTION 8

TWP 30 N R 11 W



Scale: 1 inch = 400 feet

