

NEW MEXICO OIL CONSERVATION COMMISSION  
Santa Fe, New Mexico

NOTICE OF INTENTION TO DRILL OR RECOMPLETE

Notice must be given to the District Office of the Oil Conservation Commission and approval obtained before drilling or recompletion begins. If changes in the proposed plan are considered advisable, a copy of this notice showing such changes will be returned to the sender. Submit this notice in **QUINTUPPLICATE**. One copy will be returned following approval. See additional instructions in Rules and Regulations of the Commission.

Dallas, Texas

May 5, 1954

(Place)

(Date)

OIL CONSERVATION COMMISSION  
SANTA FE, NEW MEXICO

Gentlemen:

You are hereby notified that it is our intention to commence the (Drilling) ~~(Recompletion)~~ of a well to be known as

Abrams

(Company or Operator)

1

Well No. 1, in \_\_\_\_\_, The well is

1673

(Lease)

South

(Unit)

1831

located \_\_\_\_\_ feet from the \_\_\_\_\_ line and \_\_\_\_\_ feet from the

East

5

30N

11W

line of Section \_\_\_\_\_ T. \_\_\_\_\_ R. \_\_\_\_\_, NMPM.

(GIVE LOCATION FROM SECTION LINE)

Aztec Pictured Cliffs

Pool,

San Juan

County

If State Land the Oil and Gas Lease is No. \_\_\_\_\_

If patented land the owner is Rhoda Abrams

Address Aztec, New Mexico

We propose to drill well with drilling equipment as follows: Will set surface casing with cable tools; all other drilling with rotary. approved.

The status of plugging bond is \_\_\_\_\_

Drilling Contractor

Greer-Smith Drilling Corp.

315 1/2 W. Main St.

Farmington, N.M.

We intend to complete this well in the

Pictured Cliffs formation

2175

formation at an approximate depth of \_\_\_\_\_ feet.

CASING PROGRAM

We propose to use the following strings of Casing and to cement them as indicated:

Size of Hole	Size of Casing	Weight per Foot	New or Second Hand	Depth	Sacks Cement
12-5/8"	8-5/8"	28#	New	80-150'	To circulate
7-7/8"	5-1/2"	14#	New	2100'	60-150 sacks

If changes in the above plans become advisable we will notify you immediately.

ADDITIONAL INFORMATION (If recompletion give full details of proposed plan of work.)

We will drill through the Pictured Cliffs formation with rotary tools. After electric logging we will set 5 1/2" casing on top of the producing zone. We will shoot the indicated sections using 2 1/2 to 4 qts of solid nitroglycerin per foot.

MAY 11 1954

Approved \_\_\_\_\_, 19\_\_\_\_\_  
Except as follows:

Sincerely yours,

W. P. Carr

(Company or Operator)

By \_\_\_\_\_

Operator

Position \_\_\_\_\_

Send communications regarding well to

Name \_\_\_\_\_

3700 Forest Lane

Address \_\_\_\_\_

Dallas 30, Texas

OIL CONSERVATION COMMISSION

Original signed by

By \_\_\_\_\_ John J. Abendschan \_\_\_\_\_

Title \_\_\_\_\_ PETROLEUM ENGINEER DIST. NO. 3 \_\_\_\_\_

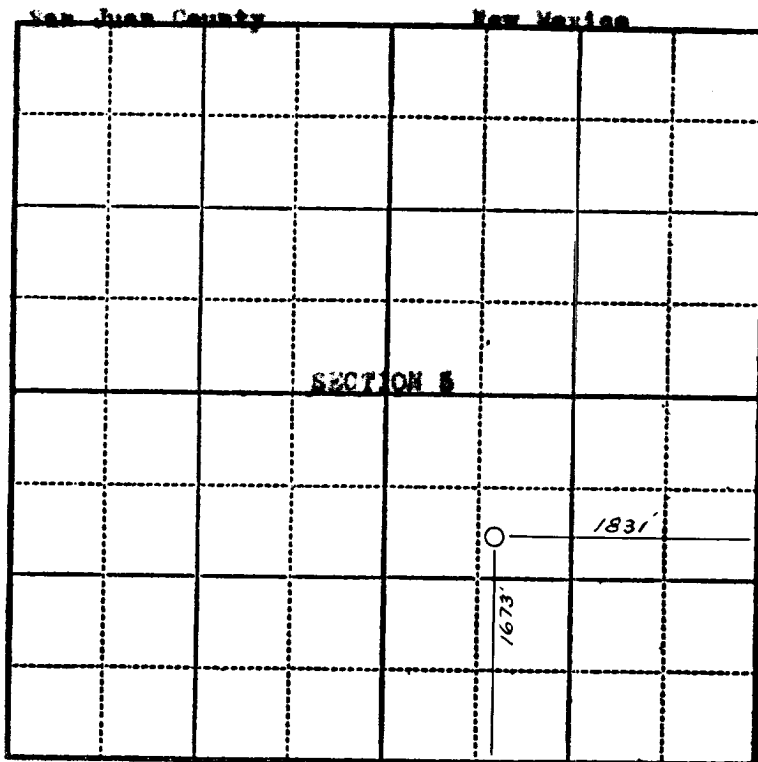
Company W.F. Carr

Lease Abrams Well No. 1

Sec. 5, T 30N, R 11E

Location 1673 feet from south line; 1831 feet from east line.

Elevation: 5666.6 GL.



N

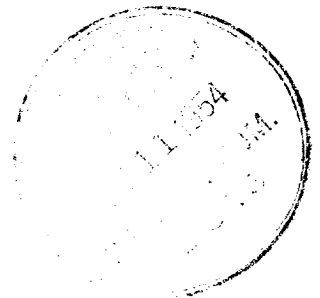
Scale—4 inches equal 1 mile.

This is to certify that the above plat was prepared from field notes of actual surveys made by me or under my supervision and that the same are true and correct to the best of my knowledge and belief.

*Stephen H. Kinney*

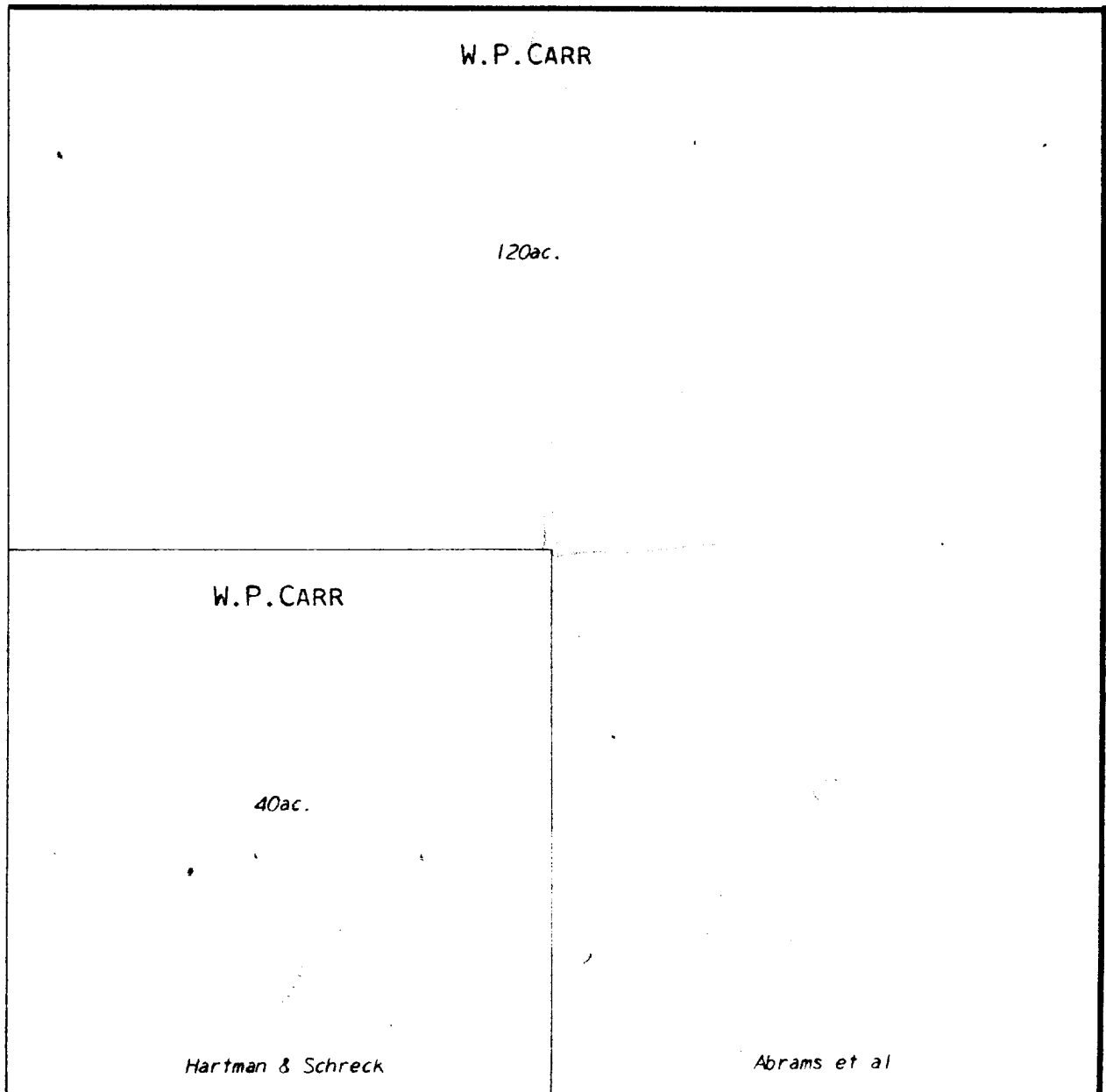
Seal:

Registered Professional  
Engineer and Land Surveyor.

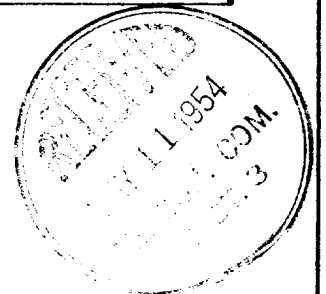


Surveyed April 7, 19 54

SE 1/4 SECTION 5  
TWP 30 N R 11 W.



Scale: 1 inch = 400 feet



OIL CONSERVATION COMMISSION		
AZTEC DISTRICT OFFICE		
No. Copies Received 5		
DISTRIBUTION		
	NO. FURNISHED	
Operator	1	
Santa Fe	1	
Recreation Office		
State Land Office		
U. S. G. S.	2	
Transporter		
File	1	✓