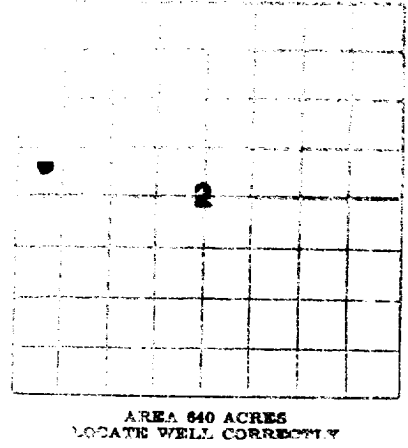


AREA OF FORMER SERVICE	
DATE OF SERVICE	
OPERATOR	

NEW MEXICO OIL CONSERVATION COMMISSION  
Santa Fe, New Mexico



WELL RECORD

Mail to District Office, Oil Conservation Commission, to which Form O-101 was sent not later than twenty days after completion of well. Follow instructions in Rules and Regulations of the Commission. Submit in QUINTUPLICATE If State Land submit 3 Copies

EPROC Associates

Monsanto-State "H"

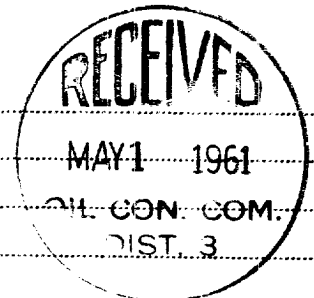
Well No. **1-X** in **SW**  $\frac{1}{4}$  of **NW**  $\frac{1}{4}$  of **2** T. **30N** R. **16W** NMPM.  
**Horseshoe-Gallup** Pool, **San Juan** County.  
 Well is **2191** feet from **north** line and **331** feet from **west** line  
 of Section **2**. If State Land the Oil and Gas Lease No. is **E-9896-3**  
 Drilling Commenced **June 16, 1960** Drilling was Completed **June 29, 1960**  
 Name of Drilling Contractor **Grossman Drilling Company**  
 Address **320 S. Mesa Verde, Aztec, New Mexico**  
 Elevation above sea level at Top of Tubing Head **5668'** The information given is to be kept confidential until \_\_\_\_\_, 19\_\_\_\_.

OIL SANDS OR ZONES

No. 1, from **1567** to **1582** No. 4, from **1602** to **1611**  
 No. 2, from **1582** to **1595** No. 5, from **1611** to **1622**  
 No. 3, from **1595** to **1602** No. 6, from **1712** to **1718 not perfed**

IMPORTANT WATER SANDS

Include data on rate of water inflow and elevation to which water rose in hole.  
 No. 1, from **none** feet.  
 No. 2, from \_\_\_\_\_ feet.  
 No. 3, from \_\_\_\_\_ feet.  
 No. 4, from \_\_\_\_\_ feet.



CASING RECORD

SIZE	WEIGHT PER FOOT	NEW OR USED	AMOUNT	KIND OF SHOES	CUT AND PULLED FROM	PERFORATIONS	PURPOSE
8 5/8"	32.00	used	214'	-	cemented	none	surface csq
4 1/2"	9.50	new	1728'	float	--	1567-1622	prod csq

MUDDING AND CEMENTING RECORD

SIZE OF HOLE	SIZE OF CASING	WHERE SET	NO. BAGS OF CEMENT	METHOD USED	MUD GRAVITY	AMOUNT OF MUD USED
10"	8 5/8"	215'	70 sx	pump & circ	-cable tools	--
8"	4 1/2"	1728'	85sx	pump & plug	" "	5 bbls wtr

RECORD OF PRODUCTION AND STIMULATION

(Record the Process used, No. of Qm. or Gals. used, interval treated or shot.)

SOF perms 1567-1622 w/28,560 gallons crude oil, 2394 gals breakdown & flush, 100,000# R/10-20 sand, 1500# mothballs in two stages. Breakdown 600 psi, Max tr pressure 1600 psi, minimum 1250 psi. IR 50.4 BPM.

Result of Production Stimulation **Increased from slight sho natural to approximately 2 BOPD pumping.**

Depth Cleaned Out \_\_\_\_\_