

Submit 3 Copies  
to Appropriate  
District Office

State of New Mexico  
Energy, Minerals and Natural Resources Department

Form C-103  
Revised 1-1-89

DISTRICT I  
P.O. Box 1980, Hobbs, NM 88240

OIL CONSERVATION DIVISION

P.O. Box 2088

DISTRICT II  
P.O. Drawer DD, Artesia, NM 88210

Santa Fe, New Mexico 87504-2088

DISTRICT III  
1000 Rio Brazos Rd., Aztec, NM 87410

WELL API NO.	3004509991
5. Indicate Type of Lease STATE <input type="checkbox"/> FEE <input checked="" type="checkbox"/>	
6. State Oil & Gas Lease No.	
7. Lease Name or Unit Agreement Name Scott Gas Com	
8. Well No. #1	
9. Pool name or Wildcat Basin Dakota/Mesaverde	
10. Elevation (Show whether DF, RKB, RT, GR, etc.)	

SUNDRY NOTICES AND REPORTS ON WELLS (DO NOT USE THIS FORM FOR PROPOSALS TO DRILL OR TO DEEPEN OR PLUG BACK TO A DIFFERENT RESERVOIR. USE "APPLICATION FOR PERMIT" (FORM C-101) FOR SUCH PROPOSALS.)	
1. Type of Well: OIL WELL <input type="checkbox"/> GAS WELL <input type="checkbox"/> OTHER <input type="checkbox"/>	
2. Name of Operator Amoco Production Company	Attention: Gail M. Jefferson, 1295C
3. Address of Operator P.O. Box 800 Denver Colorado 80201 (303) 830-6157	
4. Well Location Unit Letter <u>A</u> : <u>790</u> Feet From The <u>North</u> Line and <u>990</u> Feet From The <u>East</u> Line Section <u>1</u> Township <u>30N</u> Range <u>12W</u> NMPM San Juan County	
10. Elevation (Show whether DF, RKB, RT, GR, etc.)	

11. Check Appropriate Box to Indicate Nature of Notice, Report, or Other Data

NOTICE OF INTENTION TO:	SUBSEQUENT REPORT OF:
PERFORM REMEDIAL WORK <input type="checkbox"/>	REMEDIAL WORK <input type="checkbox"/>
TEMPORARILY ABANDON <input type="checkbox"/>	ALTERING CASING <input type="checkbox"/>
PULL OR ALTER CASING <input type="checkbox"/>	COMMENCE DRILLING OPNS. <input type="checkbox"/>
OTHER: Plug Dk/Recom Mesaverde <input checked="" type="checkbox"/>	PLUG AND ABANDONMENT <input type="checkbox"/>
	CASING TEST AND CEMENT JOB <input type="checkbox"/>
	OTHER: <input type="checkbox"/>

12. Describe Proposed or Completed Operations (Clearly state all pertinent details, and give pertinent dates, including estimated date of starting any proposed work) SEE RULE 1103.

Amoco Production Company request permission to plug the Dakota horizon and recomplete this well to the Mesaverde per the attached procedures.

If you have any technical questions please contact Khanh Vu at (303) 830-4920 or Gail Jefferson at (303) 830-6157 for any administrative concerns.

RECEIVED  
SEP 28 1995  
OIL CON. DIV.  
DIST. 3

I hereby certify that the information above is true and complete to the best of my knowledge and belief.

SIGNATURE Gail M. Jefferson TITLE Sr. Admin. Staff Asst. DATE 09-27-1995  
TYPE OR PRINT NAME Gail M. Jefferson, 1295C TELEPHONE NO. (303) 830-6157

(This space for State Use)

APPROVED BY ORIGINAL SIGNED BY ERNIE BUSCH TITLE STATE ENGINEER DATE SEP 29 1995  
CONDITIONS OF APPROVAL, IF ANY:

*2nd Version*

1. Record TP, SICP, and SIBHP
2. MIRUSU
3. TOH w/ 2 3/8" tbg (@ 6841')
4. TIH with retainer and set @ 6300'.
5. Plug DK by pumping 100 sacks of cement through the retainer. Cap retainer with 50' of cement to 6250'.
6. Pressure test casing to 3500 psi.
7. Run a GR/CCL/CBL from 4900' to surface and determine TOC for 4 1/2" tbg. Fax logs to Khanh Vu (303-830-4777) to determine TOC for squeeze work. If the MV is not isolated, then perform cement squeeze to isolate MV.
8. TIH with a 3 1/8" casing guns and perforate the following Mesaverde intervals with limited entry.

MV-Point Lookout

4518'	4522'	4524'	4533'	4536'
4541'	4552'	4556'	4560'	4582'
4600'	4611'	4649'	4718'	4721'

9. Fracture stimulate according to the attached frac schedule for the Mesaverde with tracer.
10. Flow back Mesaverde until sand entry ceased.
11. Cleanout
12. Run GR log to determine frac profile.
13. Reshoot MV intervals with 2 JSPF, 120 degree phasing, and 13 g.

MV-Point Lookout

4516-26'	4533-45'	4550-65'	4578-88'
4608-16'	4647-53'	4716-28'	

20. Cleanout with N2.
21. Continue to flow back load until well is capable of producing.
22. TIH with 2 3/8" tubing and land at 4722' with a seating nipple one joint off bottom.
23. Tie the Mesaverde string back into surface equipment and turn over to production.

If problems are encountered, please contact:

Khanh Vu

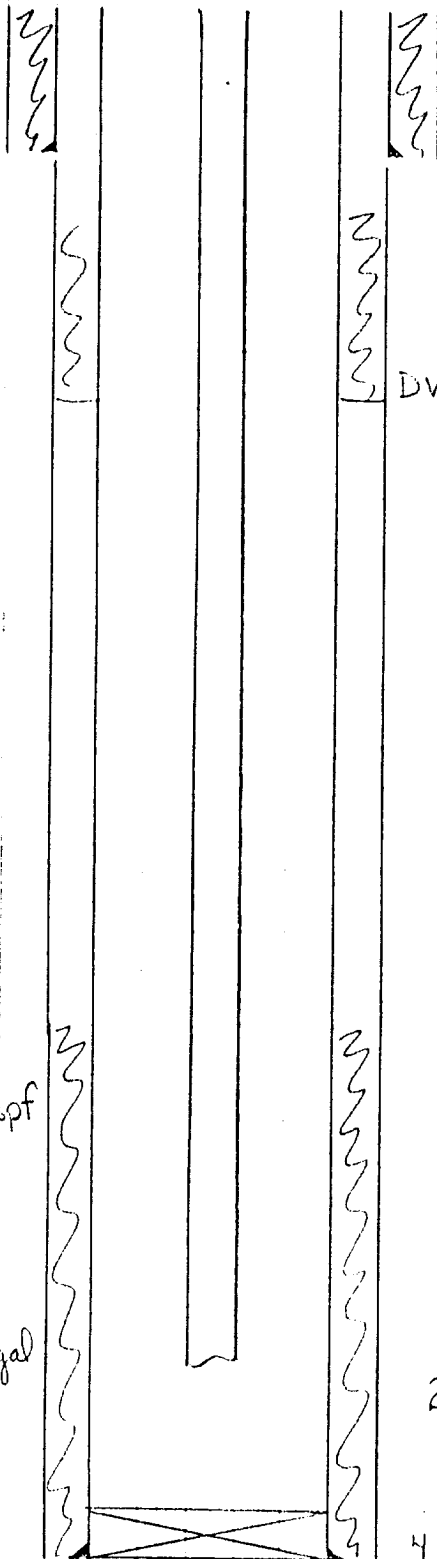
W - (303) 830-4920  
H - (303) 980-6324  
Fax - (303) 830-4777

# Amoco Production Company

## ENGINEERING CHART

Sheet No. \_\_\_\_\_ Or \_\_\_\_\_  
 File \_\_\_\_\_  
 Appn \_\_\_\_\_  
 Date \_\_\_\_\_  
 By \_\_\_\_\_

SUBJECT Scott Gas Com 1  
4/92 Ron



TOC - Surface (Circ.)

8 5/8", 22.7# @ 298'

TOC - 425' (TS 4/62)

DV Tool @ 2396

Fruitland - 1875'  
 Pictured Cliffs - 2211'

Cliff House - 3756'  
 Mene-fee - 3976'  
 Point Lookout - 4515'

TOC - ?

Dakota - 6634'

2 3/8" @ 6841'

4 1/2", 10.5# @ 6907'

'62 < Perf: 6712-18'  
 6746-52' 6 gsp  
 H<sub>2</sub>O Frac: 60 Mgal  
 60 Hlb 20/40

'85 < Perf: 6636-50'  
 6822-34'  
 Foam Frac: 100 Mgal  
 105 Hlb

PBTD - 6864'  
 TD - 6911'

District I  
PO Box 1980, Hobbs, NM 88241-1980  
District II  
811 South First, Artesia, NM 88210  
District III  
1000 Rio Brazos Rd., Aztec, NM 87410  
District IV  
2040 South Pacheco, Santa Fe, NM 87505

State of New Mexico  
Energy, Minerals & Natural Resources Department

OIL CONSERVATION DIVISION  
2040 South Pacheco  
Santa Fe, NM 87505

*[Signature]*

Form C-102  
Revised October 18, 1994  
Instructions on back  
Submit to Appropriate District Office  
State Lease - 4 Copies  
Fee Lease - 3 Copies

☐ AMENDED REPORT

WELL LOCATION AND ACREAGE DEDICATION PLAT

<sup>1</sup> API Number 3004509991		<sup>1</sup> Pool Code 72319		<sup>1</sup> Pool Name Blanco Mesaverde	
<sup>4</sup> Property Code 001037		<sup>3</sup> Property Name Scott Gas Com			<sup>6</sup> Well Number #1
<sup>7</sup> OGRID No. 000778		<sup>1</sup> Operator Name Amoco Production Company			<sup>9</sup> Elevation 5794'

<sup>10</sup> Surface Location

UL or lot no.	Section	Township	Range	Lot Idn	Feet from the	North/South line	Feet from the	East/West line	County
A	1	30N	12W		790	North	990	East	San Juan

<sup>11</sup> Bottom Hole Location If Different From Surface

UL or lot no.	Section	Township	Range	Lot Idn	Feet from the	North/South line	Feet from the	East/West line	County
<sup>12</sup> Dedicated Acres 319.20		<sup>13</sup> Joint or Infill		<sup>14</sup> Consolidation Code		<sup>15</sup> Order No.			

NO ALLOWABLE WILL BE ASSIGNED TO THIS COMPLETION UNTIL ALL INTERESTS HAVE BEEN CONSOLIDATED  
OR A NON-STANDARD UNIT HAS BEEN APPROVED BY THE DIVISION

<sup>16</sup>					790'	990'
<sup>17</sup> OPERATOR CERTIFICATION I hereby certify that the information contained herein is true and complete to the best of my knowledge and belief  <i>Gail M. Jefferson</i> Signature Gail M. Jefferson Printed Name Sr. Admin. Staff Asst. Title 9-27-1995 Date						
<sup>18</sup> SURVEYOR CERTIFICATION I hereby certify that the well location shown on this plat was plotted from field notes of actual surveys made by me or under my supervision, and that the same is true and correct to the best of my belief. December 11, 1961 Date of Survey Signature and Seal of Professional Surveyor:  1463 Certificate Number						