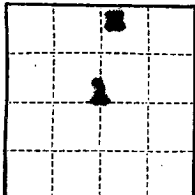


(SUBMIT IN TRIPLICATE)

UNITED STATES  
DEPARTMENT OF THE INTERIOR  
GEOLOGICAL SURVEY

Indian Agency Navajo

Allottee Mr. Louis Jahn  
Lease No. 14-00-600-1000



RECEIVED

SUNDRY NOTICES AND REPORTS ON WELLS MAY 26 1960

NOTICE OF INTENTION TO DRILL	SUBSEQUENT REPORT OF WATER SHUT-OFF	
NOTICE OF INTENTION TO CHANGE PLANS	SUBSEQUENT REPORT OF SHOOTING OR ACIDIZING	
NOTICE OF INTENTION TO TEST WATER SHUT-OFF	SUBSEQUENT REPORT OF ALTERING CASING	
NOTICE OF INTENTION TO REDRILL OR REPAIR WELL	SUBSEQUENT REPORT OF REDRILLING OR REPAIR	
NOTICE OF INTENTION TO SHOOT OR ACIDIZE	SUBSEQUENT REPORT OF ABANDONMENT	
NOTICE OF INTENTION TO PULL OR ALTER CASING	SUPPLEMENTARY WELL HISTORY	
NOTICE OF INTENTION TO ABANDON WELL		

OIL COM. COM.  
DIST. 3

(INDICATE ABOVE BY CHECK MARK NATURE OF REPORT, NOTICE, OR OTHER DATA)

May 13, 1960

Well No. 2 is located 660 ft. from N line and 2240 ft. from E line of sec. 1

SW/4 T25N R16W SW/4  
(1/4 Sec. and Sec. No.) (Twp.) (Range) (Meridian)  
Barro Colorado (Intention) San Juan New Mexico  
(Field) (County or Subdivision) (State or Territory)

RECEIVED

MAY 16 1960

The elevation of the derrick floor above sea level is 975 ft.

U. S. GEOLOGICAL SURVEY  
FARMINGTON, NEW MEXICO

DETAILS OF WORK

(State names of and expected depths to objective sands; show sizes, weights, and lengths of proposed casings; indicate mudding jobs, cementing points, and all other important proposed work)

We wish to report the running of casing and supplementary well history.

1. Drilled 12 1/8" hole to 120' with rotary tools and mud.
2. Run and cemented 9 5/8" OD 14 3/4 S-35 S&W casing out at 119'. Cemented with 75 cu cement 24 bags and circulated cement to surface. WAS 24 hrs and pressure tested casing at 600 psi for 30 minutes.
3. Drilled 7 7/8" hole with rotary tools and mud to 1407' and run electric logs. Drilled 7 7/8" hole from 1407' to 1506'.
4. Run and cemented 5 1/2" OD 14 3/4 S-35 S&W casing out at 1506'. Cemented with 100 cu of cement. Run temperature survey and located top of cement at 1550'. WAS 24 hrs and pressure tested casing at 1500 psi for 30 minutes.
5. Drilled 9 1/4" cable tool hole from 1506' to 1605'. Run Gamma Ray Sonic logs from 1506' to 1605'.
6. Sand-fill from open hole from 1506' to 1605' with 22,000 gals and 72,000# sand in (over)

I understand that this plan of work must receive approval in writing by the Geological Survey before operations may be commenced.

Company San Juan Gas Transmission Company

Address P. O. Box 1724  
Durango, Colorado

By R. E. Walker R. E. Walker  
Title District Production Superintendent