

Form 9-581a
(Feb. 1951)

3

X			

Carroll

(SUBMIT IN TRIPLICATE)

UNITED STATES
DEPARTMENT OF THE INTERIOR
GEOLOGICAL SURVEY

Budget Bureau No. 43-2584.
Form Approved.

Lead Office Santa Fe
Lease No. 076206-3
Unit W. Sec. 20

SUNDRY NOTICES AND REPORTS ON WELLS

NOTICE OF INTENTION TO DRILL	<input checked="" type="checkbox"/>	SUBSEQUENT REPORT OF WATER SHUT-OFF	
NOTICE OF INTENTION TO CHANGE PLANS		SUBSEQUENT REPORT OF SHOOTING OR ACIDIZING	
NOTICE OF INTENTION TO TEST WATER SHUT-OFF		SUBSEQUENT REPORT OF ALTERING CASING	
NOTICE OF INTENTION TO RE-DRILL OR REPAIR WELL		SUBSEQUENT REPORT OF RE-DRILLING OR REPAIR	
NOTICE OF INTENTION TO SHOOT OR ACIDIZE		SUBSEQUENT REPORT OF ABANDONMENT	
NOTICE OF INTENTION TO PULL OR ALTER CASING		SUPPLEMENTARY WELL HISTORY	
NOTICE OF INTENTION TO ABANDON WELL			

(INDICATE ABOVE BY CHECK MARK NATURE OF REPORT, NOTICE, OR OTHER DATA)

February 25, 1963

Barrett
Well No. 1 is located 1010 ft. from 1N line and 970 ft. from 1W line of sec. 20
SW/4 Sec. 20 (1/4 Sec. and Sec. No.) T-31-N (Twp.) R-9-W (Range) H.M.P.M. (Meridian)
Basin Dakota (Field) San Juan (County or Subdivision) New Mexico (State or Territory)

The elevation of the derrick floor above sea level is 6676 ft. G.L.

DETAILS OF WORK

(State names of and expected depths to objective sands; show sizes, weights, and lengths of proposed casings; indicate casing points, and all other important proposed work)

It is intended to drill a well w/ Rotary Tools thru the Dakota formation. Mud circulation will be used thru 100' of Lewis and set 7-5/8" intermediate casing. Gas circulation will be used thru the Dakota and set 4-1/2" casing. Possible productive Dakota intervals will be perf. and fractured. Estimated total depth 8100'.

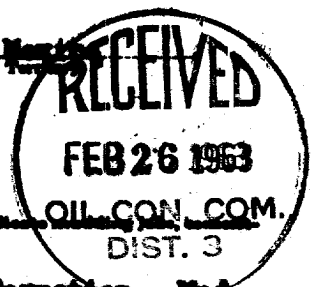
Casing Program:

- 10-3/4" - Surf. @ 150 w/120 sz. cement to surf.
- 7-5/8" @ 3700 w/300 sz. cement
- 4-1/2" @ 8200 w/300 sz. - 40% Diaseal "D" followed by 75 sz. 2% gel cement

The W1/2 of Sec. 20 is dedicated to this well.

I understand that this plan of work must receive approval in writing by the Geological Survey before operations may be commenced.

Company Delhi-Taylor Oil Corporation
Address P. O. Drawer 1190
Farmington, New Mexico
By A. R. Gibson
Title Dist. Superintendent



OK

1875
1876
1877

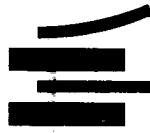
1878
1879
1880
1881
1882
1883
1884
1885
1886
1887
1888
1889
1890
1891
1892
1893
1894
1895
1896
1897
1898
1899
1900

1901
1902
1903
1904
1905
1906
1907
1908
1909
1910
1911
1912
1913
1914
1915
1916
1917
1918
1919
1920
1921
1922
1923
1924
1925
1926
1927
1928
1929
1930
1931
1932
1933
1934
1935
1936
1937
1938
1939
1940
1941
1942
1943
1944
1945
1946
1947
1948
1949
1950
1951
1952
1953
1954
1955
1956
1957
1958
1959
1960
1961
1962
1963
1964
1965
1966
1967
1968
1969
1970
1971
1972
1973
1974
1975
1976
1977
1978
1979
1980
1981
1982
1983
1984
1985
1986
1987
1988
1989
1990
1991
1992
1993
1994
1995
1996
1997
1998
1999
2000
2001
2002
2003
2004
2005
2006
2007
2008
2009
2010
2011
2012
2013
2014
2015
2016
2017
2018
2019
2020
2021
2022
2023
2024
2025
2026
2027
2028
2029
2030
2031
2032
2033
2034
2035
2036
2037
2038
2039
2040
2041
2042
2043
2044
2045
2046
2047
2048
2049
2050
2051
2052
2053
2054
2055
2056
2057
2058
2059
2060
2061
2062
2063
2064
2065
2066
2067
2068
2069
2070
2071
2072
2073
2074
2075
2076
2077
2078
2079
2080
2081
2082
2083
2084
2085
2086
2087
2088
2089
2090
2091
2092
2093
2094
2095
2096
2097
2098
2099
2100

1900
1901
1902
1903
1904
1905
1906
1907
1908
1909
1910
1911
1912
1913
1914
1915
1916
1917
1918
1919
1920
1921
1922
1923
1924
1925
1926
1927
1928
1929
1930
1931
1932
1933
1934
1935
1936
1937
1938
1939
1940
1941
1942
1943
1944
1945
1946
1947
1948
1949
1950
1951
1952
1953
1954
1955
1956
1957
1958
1959
1960
1961
1962
1963
1964
1965
1966
1967
1968
1969
1970
1971
1972
1973
1974
1975
1976
1977
1978
1979
1980
1981
1982
1983
1984
1985
1986
1987
1988
1989
1990
1991
1992
1993
1994
1995
1996
1997
1998
1999
2000
2001
2002
2003
2004
2005
2006
2007
2008
2009
2010
2011
2012
2013
2014
2015
2016
2017
2018
2019
2020
2021
2022
2023
2024
2025
2026
2027
2028
2029
2030
2031
2032
2033
2034
2035
2036
2037
2038
2039
2040
2041
2042
2043
2044
2045
2046
2047
2048
2049
2050
2051
2052
2053
2054
2055
2056
2057
2058
2059
2060
2061
2062
2063
2064
2065
2066
2067
2068
2069
2070
2071
2072
2073
2074
2075
2076
2077
2078
2079
2080
2081
2082
2083
2084
2085
2086
2087
2088
2089
2090
2091
2092
2093
2094
2095
2096
2097
2098
2099
2100



LTR



Job separation sheet

NEW MEXICO OIL CONSERVATION COMMISSION

Well Location and Acreage Dedication Plat

Section A.

Date February 25, 1963

Operator DELHI TAYLOR OIL CORPORATION Lease Barrett
 Well No. 1 Unit Letter L Section 20 Township 31 NORTH Range 9 WEST NMPM
 Located 1810 Feet From the SOUTH Line, 970 Feet From the WEST Line
 County SAN JUAN G. L. Elevation 6676.1 Dedicated Acreage 320 W 319.80 Acres
 Name of Producing Formation Dakota Pool Basin Dakota

1. Is the Operator the only owner in the dedicated acreage outlined on the plat below?
 Yes XX No _____
2. If the answer to question one is "no", have the interests of all the owners been consolidated by communitization agreement or otherwise? Yes _____ No _____. If answer is "yes", Type of Consolidation.
3. If the answer to question two is "no", list all the owners and their respective interests below:

Owner

Land Description

RECEIVED

FEB 25 1963

RECEIVED

FEB 26 1963

OIL CON. COM.

DIST. 3

U. S. GEOLOGICAL SURVEY
FARMINGTON, NEW MEXICO

Section B.

Note: All distances must be from outer boundaries of section.

This is to certify that the information in Section A above is true and complete to the best of my knowledge and belief.

Delhi Taylor Oil Corporation

(Operator)

Robert Gibson

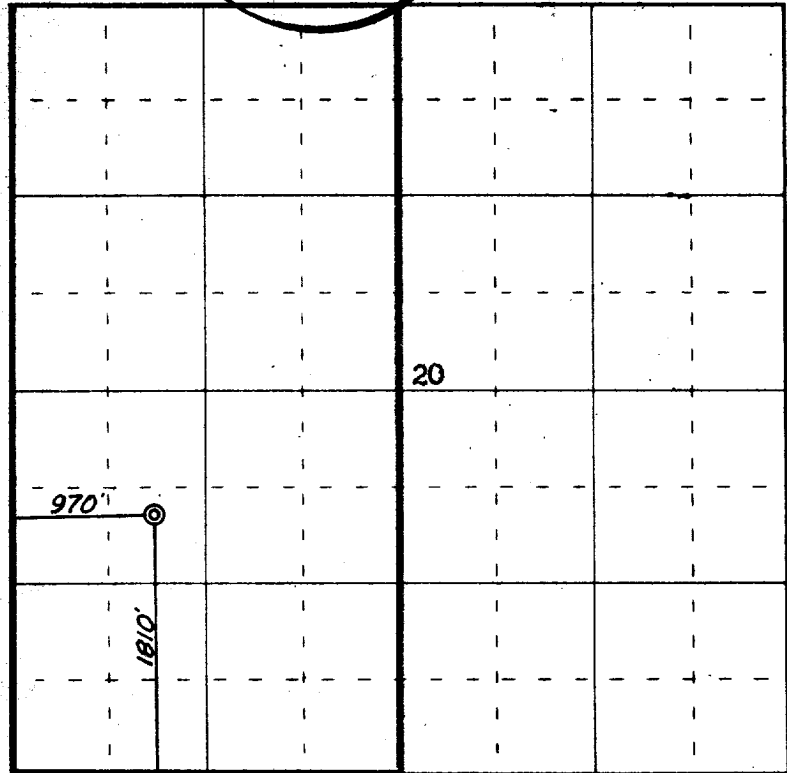
(Representative)

P. O. Drawer 1198

(Address)

Farmington, New Mexico

Ref: GLO plat dated 19 April 1881



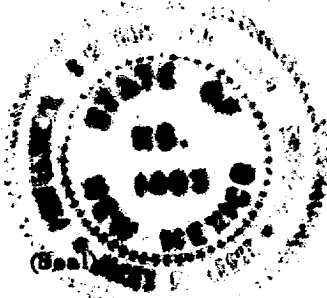
0 330 660 990 1320 1650 1980 2310 2640 2000 1500 1000 500 0

Scale 4 inches equal 1 mile

This is to certify that the above plat was prepared from field notes of actual surveys made by me or under my supervision and that the same are true and correct to the best of my knowledge and belief.

Date Surveyed 22 February 1963

James P. Lease
 Registered Professional Engineer and/or Land Surveyor
 James P. Lease, N. Mex. Reg. No. 1463



Farmington, New Mexico