

submitted in lieu of Form 3160-5

UNITED STATES
DEPARTMENT OF THE INTERIOR
BUREAU OF LAND MANAGEMENT

Sundry Notices and Reports on Wells

1. Type of Well
GAS

2. Name of Operator
BURLINGTON RESOURCES OIL & GAS COMPANY

3. Address & Phone No. of Operator
PO Box 4289, Farmington, NM 87499 (505) 326-9700

4. Location of Well, Footage, Sec., T, R, M
790' FSL, 1035' FWL
Sec. 14, T-31-N, R-9-W, NMPM

5. Lease Number
NMSF-078505

6. If Indian, All. or Tribe Name

7. Unit Agreement Name

8. Well Name & Number
Seymour #6

9. API Well No.
300451068400

10. Field and Pool
Blanco Mesaverde

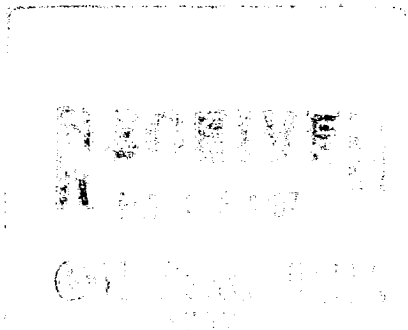
11. County and State
San Juan Co. NM

12. CHECK APPROPRIATE BOX TO INDICATE NATURE OF NOTICE, REPORT, OTHER DATA

Type of Submission	Type of Action	
<input checked="" type="checkbox"/> Notice of Intent	<input type="checkbox"/> Abandonment	<input type="checkbox"/> Change of Plans
<input type="checkbox"/> Subsequent Report	<input type="checkbox"/> Recompletion	<input type="checkbox"/> New Construction
<input type="checkbox"/> Final Abandonment	<input type="checkbox"/> Plugging Back	<input type="checkbox"/> Non-Routine Fracturing
	<input type="checkbox"/> Casing Repair	<input type="checkbox"/> Water Shut off
	<input type="checkbox"/> Altering Casing	<input type="checkbox"/> Conversion to Injection
	<input checked="" type="checkbox"/> Other - Install Pumping Equipment	

13. Describe Proposed or Completed Operations

It is intended to lower the tubing and install pumping equipment on the subject well according to the attached procedure.



14. I hereby certify that the foregoing is true and correct.

Signed [Signature] (klm) Title Regulatory Administrator Date 2/4/97

(This space for Federal or State Office use)

APPROVED BY AS/ Duane W. Spencer Title _____ Date **FEB 13 1997**

CONDITION OF APPROVAL, if any:

PUMPING EQUIPMENT INSTALLATION

Seymour No. 6
DPNO: 32291A
Mesa Verde
790' FSL, 1035' FWL
Sec. 14, T31N, R09W, San Juan County, NM

Project Summary: The Seymour No. 6 currently produces gas up the casing annulus. The well will not unload on it's own. We propose to lower the tubing and install pumping equipment. Please note that this well has been sidetracked at 723'. Therefore, rod guides will be utilized to minimize tubing wear.

1. Install used C160 pumping unit.
2. Test rig anchors, prepare blow pit. Comply to all NMOCD, BLM and BROGC safety regulations.
3. MIRU daylight PU with air package. Kill well with 2% KCl water. ND WH, NU BOP. Drop in with tubing to tag fill. POOH with tubing string. Remove standing valve, spring, and plunger from old plunger lift configuration.
4. If fill covers any perforations, then RIH with 4-1/4" bit and clean out to PBDT with air. Continue cleanout until sand production ceases. POOH.
5. RIH with 1 joint 2-3/8" tubing, 4' perforated sub, 1.78" ID SN, and 2-3/8" production tubing. Land the tubing at approximately 5630'. ND BOP, NU WH. RIH with 18' Johnson Sand Filter (mud anchor type with 12 mil slots), 2" X 1.5" insert pump, and 3/4" Grade D rods with spray metal couplings. Include rod guides on the rods from 500' to 2500'. Test pump action and hang on jack. RDMO PU. Turn well to production.

Approve: Kevin Midkiff 2/13/97
Operations Engineer

Approve: _____
Drilling Superintendent

Concur: _____
Production Superintendent

Contacts:	Operations Engineer	Kevin Midkiff	326-9807 (Office) 564-1653 (Pager)
	Production Foreman	Cliff Brock	326-9818 (Office) 326-8872 (Pager)

Seymour No. 6
Pumping Equipment Intallation
Recommended Vendors

<u>Service</u>	<u>Vendor</u>	<u>Telephone Number</u>
Johnson Sand Filter & Pump	Service Pumps (Doug)	326-5564

Spud: 10/2/53
 Completed: 2/16/53
 Elevation: 6265' GL
 6217' KB

Workovers:

5/9/80: Installed plunger lift.
 7/13/79: Trip tubing, left pump out.
 2/25/77: Trip pump.
 10/23/73: Trip tubing.
 3/9/76: Trip pump.
 7/8/75: Trip tubing. Ran pump and rods.
 9/23/63: Pull tubing, run CBL. Perf 4 holes @ 825'. Sqz. w/200 sxs to shut off brhd flow. TS showed TOC @ 515'. Re-sqz. w/100 sxs. Perf 4 holes @ 510'. Cmt. w/200 sxs. Pump 200 sxs down brhd. CO to 5657'.
 10/24/60: Run tapered mill. Sqz. hole @ 2692' w/500 sxs. TOC @ 1600' (TS). Re-sqz. w/100 sxs. Perf 3 shots @ 2369'-2370' (well had brhd flow). Cmt. holes w/ 7 sxs cmt. Perf 4 SPF @ 1499'-1500' and 999'-1000'. Pulled 1010' of 7" csg. Set 100 sxs plug on csg. stub. 9-5/8" csg. split @ 210'. Set calseal plug @ 300'. Sqz. 9-5/8" csg. w/100 sxs. Drill out. Set 125 sxs plug @ 868'. Sidetrack well @ 723' (8-3/4" bit). Ran 7" 20# J55 csg. to 3350'. cmt. w/250 sxs. TOC @ 2700'. Drilled 6-1/4" hole @ to 5690'. Ran 5" 15# J55 liner @ 3160'-5690'. Cmt. w/390 cf cmt. CO to 5656'. Perf Pt. Lookout frac w/54,000 gal. wtr. & 60,000# 20/40 sand. Perf Cliffhouse 3 frac w/45,000 gal. wtr. & 60,000# 20/40 sand. Gauged well @ 2.4 MMCFD. Ran 2-3/8" tbg. @ 5286'.

Seymour #6

Current -- 2/3/97

DPNO: 32291A

Mesa Verde

790' FSL, 1035' FWL

Sec. 14, T31N, R09W

Lat/Long: 36°53.58", 107.°42.27"

9/63: Perf 4 holes @ 825', sqz. w/200 sxs to shut off brhd flow. TOC @ 515' (TS). Resqz. w/100 sxs. Perf 4 holes @ 510'. Cmt. w/200 sxs. Pump 200 sxs down brhd

Kirtland @ 2012'

Fruitland @ 2718'

2-3/8", 4.7#, J55 tbg., 60' MA,
 4' perf sub, 1.78" ID SN, tbg. set @ 5561'. SN @ 5492'.
 Standing valve & spring in tbg.

Pictured Cliffs @ 3060'

7", 20#, J55 csg. set @ 3350'.
 Cmt. w/250 sxs. TOC @ 2700'

Cliffhouse @ 4888'

Menefee @ 4964'

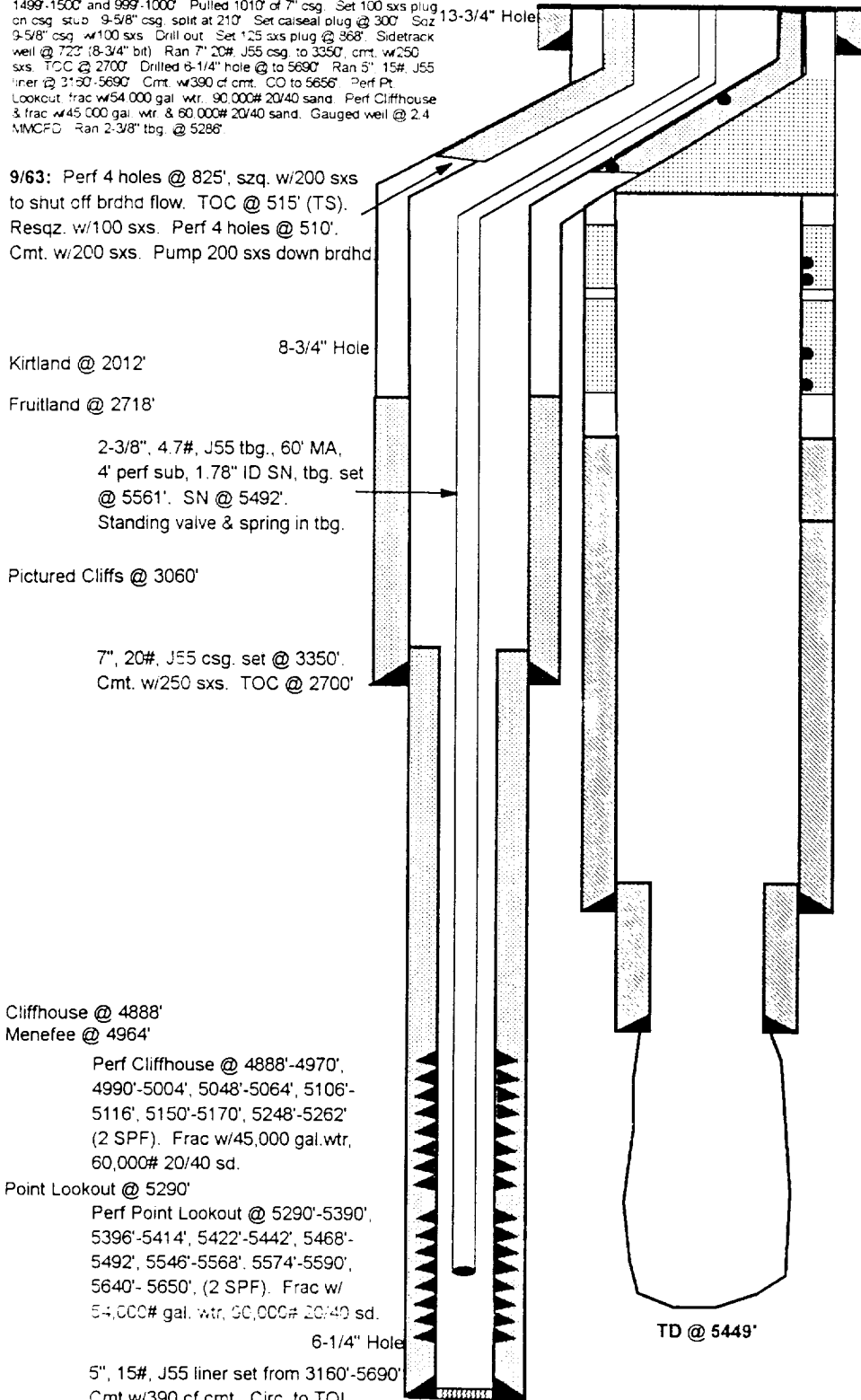
Perf Cliffhouse @ 4888'-4970',
 4990'-5004', 5048'-5064', 5106'-
 5116', 5150'-5170', 5248'-5262'
 (2 SPF). Frac w/45,000 gal. wtr,
 60,000# 20/40 sd.

Point Lookout @ 5290'

Perf Point Lookout @ 5290'-5390',
 5396'-5414', 5422'-5442', 5468'-
 5492', 5546'-5568', 5574'-5590',
 5640'-5650', (2 SPF). Frac w/
 54,000# gal. wtr, 60,000# 20/40 sd.

5", 15#, J55 liner set from 3160'-5690'
 Cmt w/390 cf cmt. Circ. to TOL.

COTD @ 5657'
 TD @ 5690'



9-5/8", 36#, J55 csg. set @ 245'.
 Cmt. w/175 sxs. Circulate to surface.

10/60: 9-5/8" csg. split @ 210'. Set calseal plug @ 300'.
 Sqz. 9-5/8" csg. w/100 sxs. Set 125' plug @ 868'.
 Sidetracked well @ 723' (8-3/4" bit).

10/60: Pulled 1010' of 7" csg. Set 100 sxs plug.

10/60: Perf 2 SPF @ 1499'-1500' and 999'-1000'.

10/60: Perf 3 shots @ 2369'-2370' cmt. w/unknown amount of cmt. Sqz. hole @ 2692' w/500 sxs. TOC @ 1600' (TS). Re-sqz. w/100 sxs.

TOC @ 2925' (TS)

7", 20# & 23#, J55 csg. set @ 4692'.
 Cmt. w/300 sxs cmt. w/3% gel.

5-12", 15.5#, J55 liner set from 4567'-4825'.
 Cmt. w/35 sxs cmt. Circulate to TOL.

Nitro shot w/1395 qts. in 4-3/4" hole.

TD @ 5449'