

UNITED STATES
DEPARTMENT OF THE INTERIOR
GEOLOGICAL SURVEY

APPLICATION FOR PERMIT TO DRILL, DEEPEN, OR PLUG BACK

1a. TYPE OF WORK

DRILL ☒DEEPEN ☐PLUG BACK ☐

b. TYPE OF WELL

OIL
WELL ☐GAS
WELL ☒

OTHER

SINGLE
ZONE ☐MULTIPLE
ZONE ☐

2. NAME OF OPERATOR

Tenneco Oil Company

3. ADDRESS OF OPERATOR

P. O. 1714, Durango, Colorado 81301

4. LOCATION OF WELL (Report location clearly and in accordance with any State requirements.)*

At surface

1190 FSL 825 FWL

At proposed prod. zone

Unit Letter "M"

14. DISTANCE IN MILES AND DIRECTION FROM NEAREST TOWN OR POST OFFICE*

16. DISTANCE FROM PROPOSED*

LOCATION TO NEAREST
PROPERTY OR LEASE LINE, FT.
(Also to nearest drlg. unit line, if any)

18. DISTANCE FROM PROPOSED LOCATION*

TO NEAREST WELL, DRILLING, COMPLETED,
OR APPLIED FOR, ON THIS LEASE, FT.

16. NO. OF ACRES IN LEASE

160

19. PROPOSED DEPTH

3000'

17. NO. OF ACRES ASSIGNED
TO THIS WELL

160 SW/4

20. ROTARY OR CABLE TOOLS

Rotary

21. ELEVATIONS (Show whether DF, RT, GR, etc.)

5828 GR

22. APPROX. DATE WORK WILL START*

June 11, 1966

23.

PROPOSED CASING AND CEMENTING PROGRAM

SIZE OF HOLE	SIZE OF CASING	WEIGHT PER FOOT	SETTING DEPTH	QUANTITY OF CEMENT
12-1/4	8-5/8	20#	150	Circulate to surface 100 sx
7-7/8	3-1/2	7.7#	3000	Circulate cement to surface

We plan to rig up, drill w/rotary to aprx. T.D. 3000'. Run csg. as shown above.
Log, perf. and frac. and install well head. Conduct deliverability tests.

RECEIVED

JUN 6 1966

U. S. GEOLOGICAL SURVEY
FARMINGTON, N. M.

RECEIVED

JUN 7 1966

OIL CON. COM.
DIST. 3

IN ABOVE SPACE DESCRIBE PROPOSED PROGRAM: If proposal is to deepen or plug back, give data on present productive zone and proposed new productive zone. If proposal is to drill or deepen directionally, give pertinent data on subsurface locations and measured and true vertical depths. Give blowout preventer program, if any.

24.

SIGNED

Harold C. Nichols

TITLE

Senior Production Clerk

DATE

June 3, 1966

(This space for Federal or State office use)

PERMIT NO.

APPROVAL DATE

APPROVED BY

TITLE

SUPERVISOR DIST. #3

DATE

JUN 7 1966

CONDITIONS OF APPROVAL, IF ANY:

5 USGS, Frmg., 1 Cont., 1 File

*See Instructions On Reverse Side

**NEW MEXICO OIL CONSERVATION COMMISSION
WELL LOCATION AND ACERAGE DEDICATION PLAT**

All distances must be from the outer boundaries of the Section

Operator TENNECO OIL COMPANY			Lease FLORENCE		Well No. 80
Unit Letter M	Section 13	Township 30N	Range 9W	County San Juan	
Actual Footage Location of Well: <div style="display: flex; justify-content: space-between;"> 1190 feet from the south line and 825 feet from the west line </div>					
Ground Level Elev. 5828 ungraded	Producing Formation Blanco Pictured Cliffs	Pool Blanco Pictured Cliffs	Dedicated Acreage: SW/4 160 Acres		

1. Outline the acreage dedicated to the subject well by colored pencil or hachure marks on the plat below.
 2. If more than one lease is dedicated to the well, outline each and identify the ownership thereof (both as to working interest and royalty),
 3. If more than one lease of different ownership is dedicated to the well, have the interests of all owners been consolidated by communitization, unitization, force-pooling, etc?
- () Yes () No If answer is "yes," type of consolidation

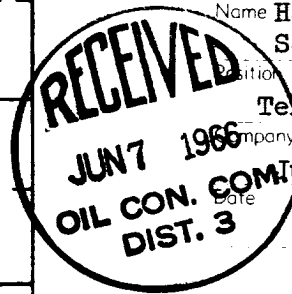
If answer is "no," list the owners and tract descriptions which have actually consolidated. (Use reverse side of this form if necessary.)

No allowable will be assigned to the well until all interests have been consolidated (by communitization, unitization, forced-pooling, or otherwise) or until a non standard unit, eliminating such interests, has been approved by the Commission.

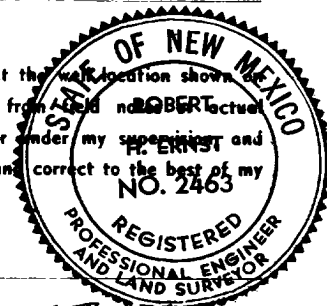
CERTIFICATION

I hereby certify that the information contained herein is true and complete to the best of my knowledge and belief.

Harold C. Nichols
 Name **Harold C. Nichols**
 Position **Senior Production Clerk**
 Company **Tenneco Oil Company**
 Date **June 3, 1966**



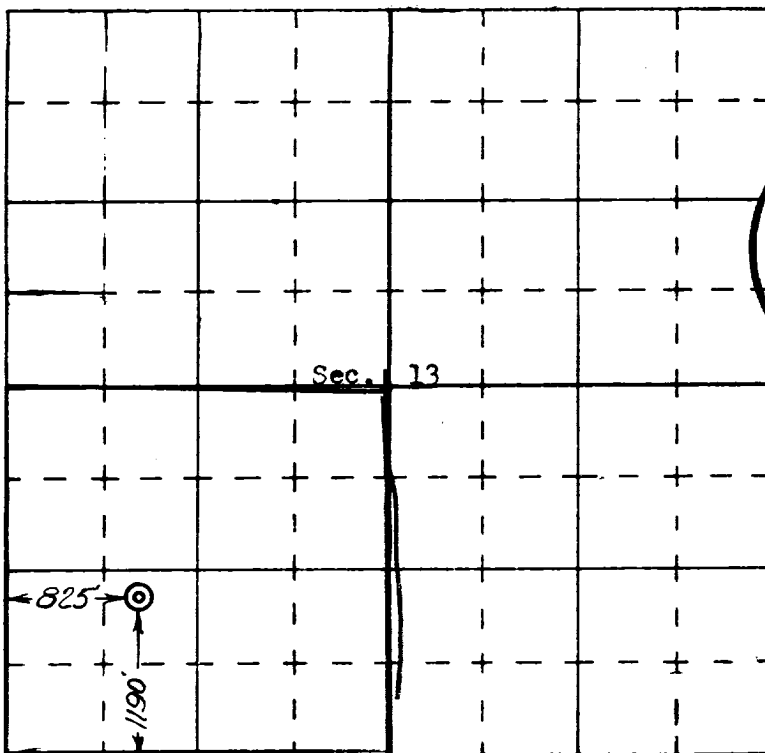
I hereby certify that the well location shown this plat was plotted from actual surveys made by me or under my supervision and that the same is true and correct to the best of my knowledge and belief.



7 April 1966
 Date Surveyed

Robert H. Ernst
 Registered Professional Engineer
 and/or Land Surveyor

Robert H. Ernst
N. Mex. P.E. & L.S. 2463
 Certificate No.



ERNST ENGINEERING CO.
DURANGO, COLORADO