

UNITED STATES  
DEPARTMENT OF THE INTERIOR  
GEOLOGICAL SURVEY

## APPLICATION FOR PERMIT TO DRILL, DEEPEN, OR PLUG BACK

## 1a. TYPE OF WORK

DRILL ☒DEEPEN ☐PLUG BACK ☐

## b. TYPE OF WELL

OIL  
WELL ☐GAS  
WELL ☒

OTHER

SINGLE  
ZONE ☒MULTIPLE  
ZONE ☐

## 2. NAME OF OPERATOR

Tenneco Oil Company

## 3. ADDRESS OF OPERATOR

P. O. Box 1714 - Durango, Colorado

## 4. LOCATION OF WELL (Report location clearly and in accordance with any State requirements.)\*

At surface

915' FSL, 1070' FEL

Unit "P"

At proposed prod. zone

## 14. DISTANCE IN MILES AND DIRECTION FROM NEAREST TOWN OR POST OFFICE\*

## 10. DISTANCE FROM PROPOSED\*

LOCATION TO NEAREST  
PROPERTY OR LEASE LINE, FT.  
(Also to nearest drlg. unit line, if any)

## 16. NO. OF ACRES IN LEASE

160

17. NO. OF ACRES ASSIGNED  
TO THIS WELL

160

18. DISTANCE FROM PROPOSED LOCATION\*  
TO NEAREST WELL, DRILLING, COMPLETED,  
OR APPLIED FOR, ON THIS LEASE, FT.

## 19. PROPOSED DEPTH

3000'

## 20. ROTARY OR CABLE TOOLS

Rotary

## 21. ELEVATIONS (Show whether DF, RT, GR, etc.)

5967' GR

## 22. APPROX. DATE WORK WILL START\*

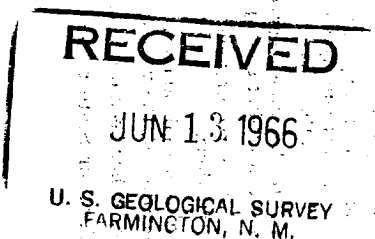
June 23, 1966

## 23.

## PROPOSED CASING AND CEMENTING PROGRAM

SIZE OF HOLE	SIZE OF CASING	WEIGHT PER FOOT	SETTING DEPTH	QUANTITY OF CEMENT
12-1/4"	8-5/8"	20#	150	Circulate to surface - 100 sacks
7-7/8"	3-1/2"	7.7#	3000	Circulate cement to surface

We plan to rig up, drill with Rotary to approximate T.D. 3000'. Run casing as shown above. Log, perforate and frac and install well head. Conduct deliverability tests.



IN ABOVE SPACE DESCRIBE PROPOSED PROGRAM: If proposal is to deepen or plug back, give data on present productive zone and proposed new productive zone. If proposal is to drill or deepen directionally, give pertinent data on subsurface locations and measured and true vertical depths. Give blowout preventer program, if any.

## 24.

SIGNED

Harold C. Nichols

TITLE

Senior Production Clerk

DATE

June 10, 1966

(This space for Federal or State office use)

PERMIT NO.

APPROVAL DATE

APPROVED BY

TITLE

SUPERVISOR DIST. #3

DATE

JUN 14 1966

CONDITIONS OF APPROVAL, IF ANY:

## Distribution

- 5 - USGS
- 1 - Continental
- 1 - File

\*See Instructions On Reverse Side

**NEW MEXICO OIL CONSERVATION COMMISSION  
WELL LOCATION AND ACERAGE DEDICATION PLAT**

All distances must be from the outer boundaries of the Section

Operator <b>TENNECO OIL COMPANY</b>		Lease <b>FLORENCE</b>		Well No. <b>92</b>	
Unit Letter <b>P</b>	Section <b>30</b>	Township <b>30 North</b>	Range <b>9 West</b>	County <b>San Juan</b>	

Actual Footage Location of Well

**915** feet from the **South** line and **1070** feet from the **East** line

Ground Level Elev. \_\_\_\_\_

**5967' ungraded** Blanco Pictured Cliffs \_\_\_\_\_ Blanco Pictured Cliffs \_\_\_\_\_ 160 Acres

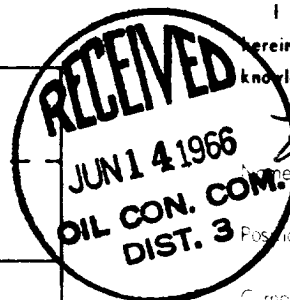
1. Outline the acreage dedicated to the subject well by colored pencil or hatchure marks on the plat below
  2. If more than one lease is dedicated to the well, outline each and identify the ownership thereof (both as to working interest and royalty).
  3. If more than one lease of different ownership is dedicated to the well, have the interests of all owners been consolidated by communitization, unitization, force-pooling, etc?
- ( ) Yes ( ) No If answer is "yes," type of consolidation \_\_\_\_\_

If answer is "no," list the owners and tract descriptions which have actually consolidated. (Use reverse side of this form if necessary.) \_\_\_\_\_

No allowable will be assigned to the well until all interests have been consolidated (by communitization, unitization, forced-pooling, or otherwise) or until a non standard unit, eliminating such interests, has been approved by the Commission.

**CERTIFICATION**

I hereby certify that the information contained herein is true and complete to the best of my knowledge and belief.

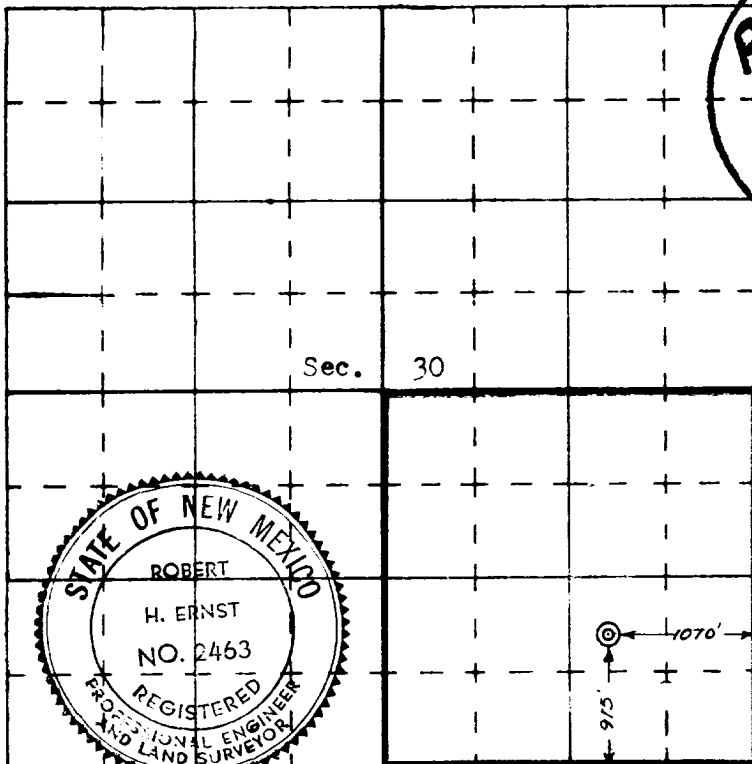


*Harold C. Nichols*  
Harold C. Nichols

Senior Production Clerk

Tenneco Oil Company

June 10, 1966



I hereby certify that the well location shown on this plat was plotted from field notes of actual surveys made by me or under my supervision, and that the same is true and correct to the best of my knowledge and belief.

11 April 1966

*Robert H. Ernst*  
Robert H. Ernst  
Registered Professional Engineer  
and/or Land Surveyor

M. Mex. E. & L.S. 2463

Certificate No. \_\_\_\_\_

ERNST ENGINEERING CO.  
Durango, Colorado