

UNITED STATES
DEPARTMENT OF THE INTERIOR
GEOLOGICAL SURVEY

APPLICATION FOR PERMIT TO DRILL, DEEPEN, OR PLUG BACK

1a. TYPE OF WORK

DRILL ☒

DEEPEN ☐

PLUG BACK ☐

b. TYPE OF WELL

OIL
WELL ☐

GAS
WELL ☒

OTHER

SINGLE
ZONE ☒

MULTIPLE
ZONE ☐

2. NAME OF OPERATOR

Tenneco Oil Company

3. ADDRESS OF OPERATOR

P. O. Box 1714 - Durango, Colorado

4. LOCATION OF WELL (Report location clearly and in accordance with any State requirements.)
At surface

1025' FSL, 1775' FEL

Unit "O"

At proposed prod. zone

14. DISTANCE IN MILES AND DIRECTION FROM NEAREST TOWN OR POST OFFICE*

15. DISTANCE FROM PROPOSED*
LOCATION TO NEAREST
PROPERTY OR LEASE LINE, FT.
(Also to nearest drlg. unit line, if any)

16. NO. OF ACRES IN LEASE

160

17. NO. OF ACRES ASSIGNED
TO THIS WELL

160 SE/4

18. DISTANCE FROM PROPOSED LOCATION*
TO NEAREST WELL, DRILLING, COMPLETED,
OR APPLIED FOR, ON THIS LEASE, FT.

19. PROPOSED DEPTH

3000'

20. ROTARY OR CABLE TOOLS

Rotary

21. ELEVATIONS (Show whether DF, RT, GR, etc.)

6260' GR

22. APPROX. DATE WORK WILL START*

July 19, 1966

23.

PROPOSED CASING AND CEMENTING PROGRAM

SIZE OF HOLE	SIZE OF CASING	WEIGHT PER FOOT	SETTING DEPTH	QUANTITY OF CEMENT
12-1/4	8-5/8	20#	150	Circulate to surface
7-7/8	3-1/2	9.2#	3000	Circulate to surface

We propose to drill with Rotary to approximate TD 3000'. Log, run casing as shown above. WOC. Perforate and frac and complete as single Blanco Pictured Cliffs gas well. Conduct deliverability tests.

RECEIVED

JUL 19 1966

U. S. GEOLOGICAL SURVEY
FARMINGTON, N. M.

RECEIVED

JUL 20 1966

OIL CON. COM.
DIST. 3

IN ABOVE SPACE DESCRIBE PROPOSED PROGRAM: If proposal is to deepen or plug back, give data on present productive zone and proposed new productive zone. If proposal is to drill or deepen directionally, give pertinent data on subsurface locations and measured and true vertical depths. Give blowout preventer program, if any.

24.

SIGNED

Harold C. Nichols

TITLE Senior Production Clerk

DATE 7-18-66

(This space for Federal or State office use)

PERMIT NO.

APPROVAL DATE

APPROVED BY

TITLE

CONDITIONS OF APPROVAL, IF ANY:

Distribution:

- 5 - USGS
- 1 - Continental
- 1 - Aztec Oil & Gas

*See Instructions On Reverse Side

**NEW MEXICO OIL CONSERVATION COMMISSION
WELL LOCATION AND ACERAGE DEDICATION PLAT**

All distances must be from the outer boundaries of the Section

Operator TENNECO OIL COMPANY Lease RIDDLE Well No 8
 Unit Letter 0 Section 7 Township 30 North Range 9 West County San Juan
 Actual Postage Location of Well 1025 feet from the South line and 1775 feet from the East line
 Proposed Well Elev. 6260 ungraded Producing Formation Blanco Pictured Cliffs Dedicated Acreage 160 SE/4 Acres

1. Outline the acreage dedicated to the subject well by colored pencil or hatchure marks on the plat below.
2. If more than one lease is dedicated to the well, outline each and identify the ownership thereof (both as to working interest and royalty).
3. If more than one lease of different ownership is dedicated to the well, have the interests of all owners been consolidated by communitization, unitization, forced-pooling, etc?
- Yes ☐ No ☐ If answer is "yes," type of consolidation _____

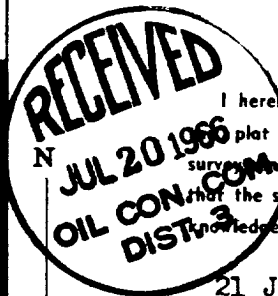
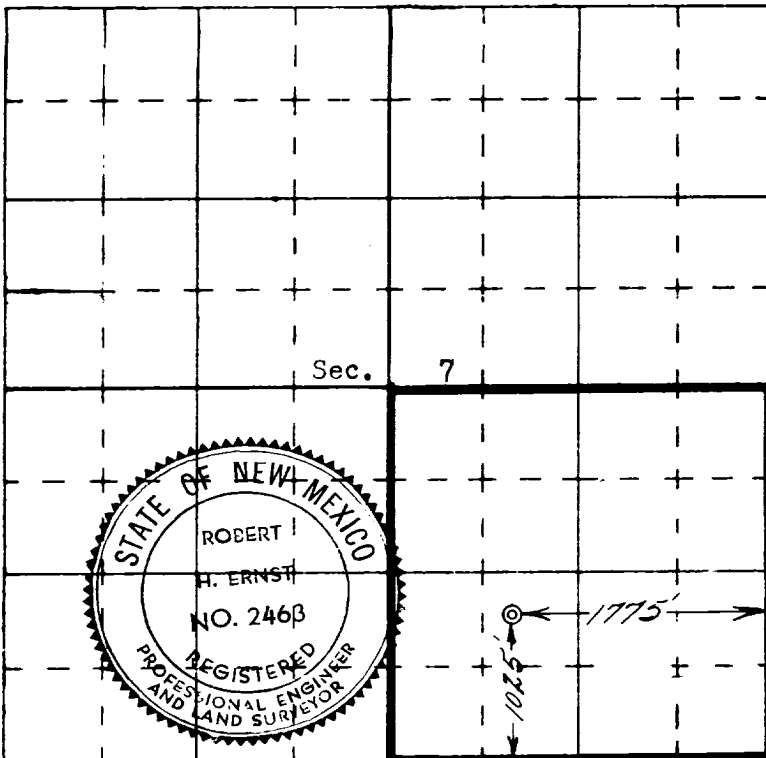
If answer is "no," list the owners and tract descriptions which have actually consolidated. (Use reverse side of this form if necessary.) _____

No allowable will be assigned to the well until all interests have been consolidated (by communitization, unitization, forced-pooling, or otherwise) or until a non standard unit, eliminating such interests, has been approved by the Commission.

CERTIFICATION

I hereby certify that the information contained herein is true and complete to the best of my knowledge and belief.

Harold C. Nichols
 Name Harold C. Nichols
 Position Senior Production Clerk
 Company Tenneco Oil Company
 Date July 18, 1966



I hereby certify that the well location shown on this plat was plotted from field notes of actual survey made by me or under my supervision, and that the same is true and correct to the best of my knowledge and belief.

21 June 1966
 Date Surveyed
Robert H. Ernst
 Registered Professional Engineer
 and/or Land Surveyor
Robert H. Ernst
N. Vex. PE & IS 2463
 Certificate No. _____

ERNST ENGINEERING COMPANY
 DURANGO, COLORADO