

UNITED STATES
DEPARTMENT OF THE INTERIOR
GEOLOGICAL SURVEY

APPLICATION FOR PERMIT TO DRILL, DEEPEN, OR PLUG BACK

1a. TYPE OF WORK

DRILL ☒DEEPEN ☐PLUG BACK ☐

b. TYPE OF WELL

OIL
WELL ☐GAS
WELL ☒

OTHER

SINGLE
ZONE ☒MULTIPLE
ZONE ☐

2. NAME OF OPERATOR

Tenneco Oil Company

3. ADDRESS OF OPERATOR

P. O. Box 1714 - Durango, Colorado

4. LOCATION OF WELL (Report location clearly and in accordance with any State requirements.)*

At surface

1650' FSL, 990' FWL

Unit "L".

At proposed prod. zone

14. DISTANCE IN MILES AND DIRECTION FROM NEAREST TOWN OR POST OFFICE*

15. DISTANCE FROM PROPOSED*

LOCATION TO NEAREST
PROPERTY OR LEASE LINE, FT.
(Also to nearest drlg. unit line, if any)

16. NO. OF ACRES IN LEASE

160

17. NO. OF ACRES ASSIGNED
TO THIS WELL

160 Sw/4

18. DISTANCE FROM PROPOSED LOCATION*
TO NEAREST WELL, DRILLING, COMPLETED,
OR APPLIED FOR, ON THIS LEASE, FT.

19. PROPOSED DEPTH

3000'

20. ROTARY OR CABLE TOOLS

Rotary

21. ELEVATIONS (Show whether DF, RT, GR, etc.)

6105' GR

22. APPROX. DATE WORK WILL START*

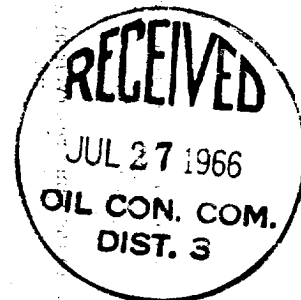
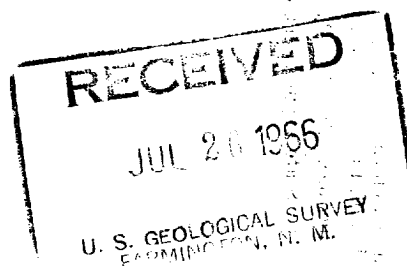
July 29, 1966

23.

PROPOSED CASING AND CEMENTING PROGRAM

| SIZE OF HOLE | SIZE OF CASING | WEIGHT PER FOOT | SETTING DEPTH | QUANTITY OF CEMENT |
|--------------|----------------|-----------------|---------------|----------------------|
| 12-1/4 | 8-5/8 | 20# | 150 | Circulate to Surface |
| 7-7/8 | 3-1/2 | 9.2# | 3000 | Circulate to Surface |

We propose to drill with Rotary to approximate T.D. of 3000'. Log. Run casing as shown above. WOC. Perforate and frac and complete as single Blanco Pictured Cliffs gas well. Conduct deliverability tests.



IN ABOVE SPACE DESCRIBE PROPOSED PROGRAM: If proposal is to deepen or plug back, give data on present productive zone and proposed new productive zone. If proposal is to drill or deepen directionally, give pertinent data on subsurface locations and measured and true vertical depths. Give blowout preventer program, if any.

24.

SIGNED

Harold C. Nichols
Harold C. Nichols

TITLE

Senior Production Clerk

DATE

July 25, 1966

(This space for Federal or State office use)

PERMIT NO.

APPROVAL DATE

APPROVED BY

TITLE

DATE

CONDITIONS OF APPROVAL, IF ANY:

Distribution:

5 - USGS

1 - Aztec Oil & Gas

1 - Continental

1 - File

*See Instructions On Reverse Side

**NEW MEXICO OIL CONSERVATION COMMISSION
WELL LOCATION AND ACERAGE DEDICATION PLAT**

All distances must be from the outer boundaries of the Section

Operator TENNECO OIL COMPANY Lease RIDDLE Well No. 7
 Unit Letter L Section 17 Township 30 North Range 9 West County San Juan
 Actual Footage Location of Well: 1650 feet from the South line and 990 feet from the West line
 Ground Level Elev. 6105' ungraded Producing Formation Blanco Pictured Cliffs Well No. 160 SW/4 Acres SW/4

1. Outline the acreage dedicated to the subject well by colored pencil or hatchure marks on the plat below.
2. If more than one lease is dedicated to the well, outline each and identify the ownership thereof (both as to working interest and royalty).
3. If more than one lease of different ownership is dedicated to the well, have the interests of all owners been consolidated by communization, unitization, force-pooling, etc?
 () Yes () No If answer is "yes," type of consolidation _____

If answer is "no," list the owners and tract descriptions which have actually consolidated (Use reverse side of this form if necessary): _____

No allowable will be assigned to the well until all interests have been consolidated (by communization, unitization, forced-pooling, or otherwise) or until a non standard unit, eliminating such interests, has been approved by the Commission.

CERTIFICATION

I hereby certify that the information contained herein is true and complete to the best of my knowledge and belief.

Harold C. Nichols
 Name Harold C. Nichols

Position Senior Production Clerk

Company Tenneco Oil Company

Date July 25, 1966

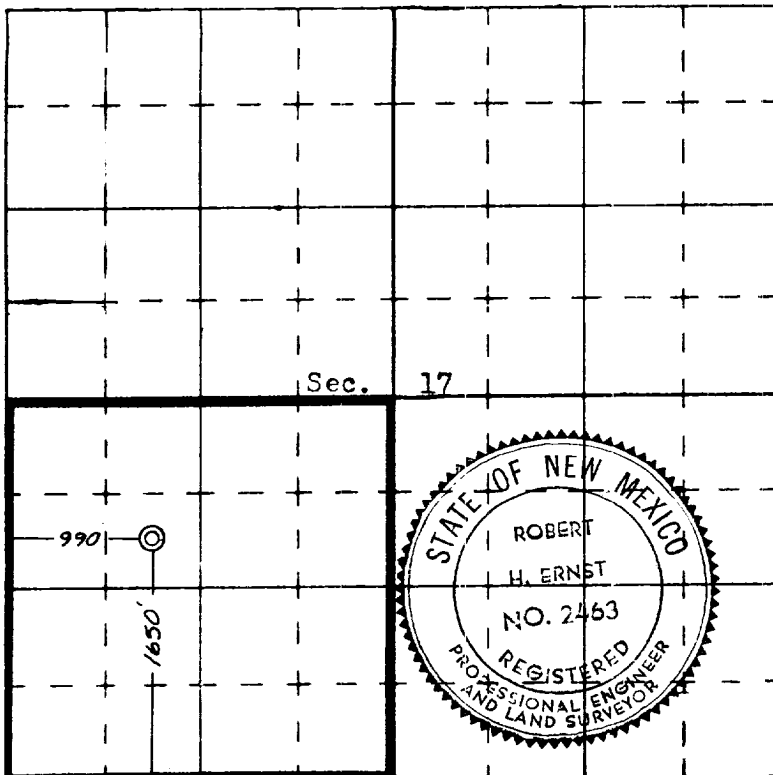
RECEIVED
 JUL 27 1966
 I hereby certify that the well location shown on this plat was plotted from field notes of actual survey made under my supervision, and that the **DIST. IS** and correct to the best of my knowledge and belief.

16 June 1966
 Date Surveyed

Robert H. Ernst
 Registered Professional Engineer
 and/or Land Surveyor

Robert H. Ernst
 Reg. PE & LS N. Mex. 2463

Certificate No. _____



N

**ERNST ENGINEERING CO.
DURANGO, COLORADO**