

*Let
Cards + Label*

SUBMIT IN TRIPLICATE*
(Other instructions on
reverse side)

Form approved.
Budget Bureau No. 42-R1425.

UNITED STATES
DEPARTMENT OF THE INTERIOR
GEOLOGICAL SURVEY

APPLICATION FOR PERMIT TO DRILL, DEEPEN, OR PLUG BACK

1a. TYPE OF WORK

DRILL ☒

DEEPEN ☐

PLUG BACK ☐

b. TYPE OF WELL

OIL WELL ☐

GAS WELL ☒

OTHER

SINGLE ZONE ☒

MULTIPLE ZONE ☐

2. NAME OF OPERATOR

Tenneco Oil Company

3. ADDRESS OF OPERATOR

P. O. Box 1714 - Durango, Colorado

4. LOCATION OF WELL (Report location clearly and in accordance with any State requirements.)*

At surface

990' FSL, 990' FEL

Unit "P"

At proposed prod. zone

14. DISTANCE IN MILES AND DIRECTION FROM NEAREST TOWN OR POST OFFICE*

15. DISTANCE FROM PROPOSED*

LOCATION TO NEAREST
PROPERTY OR LEASE LINE, FT.
(Also to nearest drig. unit line, if any)

16. NO. OF ACRES IN LEASE

171.38

18. DISTANCE FROM PROPOSED LOCATION*

TO NEAREST WELL, DRILLING, COMPLETED,
OR APPLIED FOR, ON THIS LEASE, FT.

19. PROPOSED DEPTH

3000'

17. NO. OF ACRES ASSIGNED
TO THIS WELL

171.38 SE/4

20. ROTARY OR CABLE TOOLS

Rotary

21. ELEVATIONS (Show whether DF, RT, GR, etc.)

5730' GR

22. APPROX. DATE WORK WILL START*

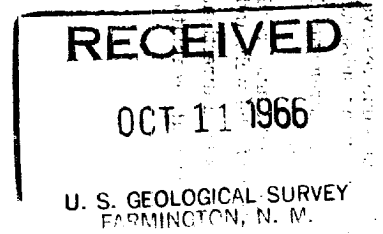
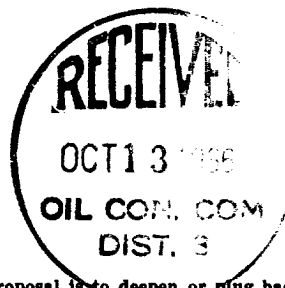
October 10, 1966

23.

PROPOSED CASING AND CEMENTING PROGRAM

SIZE OF HOLE	SIZE OF CASING	WEIGHT PER FOOT	SETTING DEPTH	QUANTITY OF CEMENT
12-1/4	8-5/8	20# & 24#	150	Cement to Surface
7-7/8	3-1/2	9.2#	3000	Cement to Surface

We propose to drill to approximate T.D. of 3000'. Run GRD Log. Run casing as shown above. W.O.C. Perforate and frac and complete as single Blanco Pictured Cliffs well. Conduct deliverability tests.



IN ABOVE SPACE DESCRIBE PROPOSED PROGRAM: If proposal is to deepen or plug back, give data on present productive zone and proposed new productive zone. If proposal is to drill or deepen directionally, give pertinent data on subsurface locations and measured and true vertical depths. Give blowout preventer program, if any.

24.

SIGNED

Harold C. Nichols
Harold C. Nichols

TITLE

Senior Production Clerk

DATE

10-10-66

(This space for Federal or State office use)

PERMIT NO.

APPROVAL DATE

APPROVED BY

TITLE

CONDITIONS OF APPROVAL, IF ANY:

Distribution:

- 5 - U.S.G.S.
- 1 - Continental
- 1 - El Paso
- 1 - File

*See Instructions On Reverse Side

NEW MEXICO OIL CONSERVATION COMMISSION

WELL LOCATION AND ACERAGE DEDICATION PLAT

All distances must be from the outer boundaries of the Section

Owner TENNECO OIL COMPANY Lessee WALKER CO. Well No. 1
 Section 25 Township 30 North Range 9 West County San Juan
 Footage Location of Well 990 feet from the South line 990 feet from the East line
 Section 25 Township 30 North Range 9 West County San Juan
 Surface Ungraded Blanco Pictured Cliffs Blanco Pictured Cliffs 171.38 SE/4 Acres

Outline the acreage dedicated to the subject well by color, legend, or hatchure marks on the plat below

If more than one lease is dedicated to the well, outline each and identify the working interest, both as to working interest and royalty.

If more than one lease of different ownership is dedicated to the well, has the interest of all owners been consolidated by communitization or unitization, for exclusive use?

Yes ☐ No ☒ If answer is "No," the interest of all owners has been consolidated by communitization or unitization, for exclusive use.

If answer is "No," list the owners and tract descriptions which have actually consolidated. (Use reverse side of this form if necessary.)

Consolidation will be assigned to the well until all interests have been consolidated by communitization or unitization, for exclusive use, or otherwise, or until a non-stakeholder unit, eliminating such interests, has been approved by the Commission.

CERTIFICATION

I hereby certify that the information contained herein is true and complete to the best of my knowledge and belief.

Harold C. Nichols
 Name Harold C. Nichols
 Position Senior Production Clerk

Tenneco Oil Company
 Company

October 10, 1966
 Date

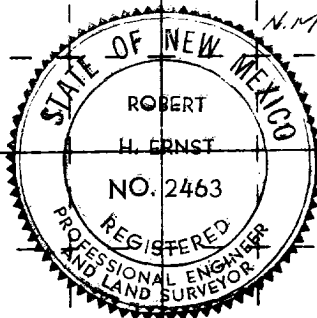
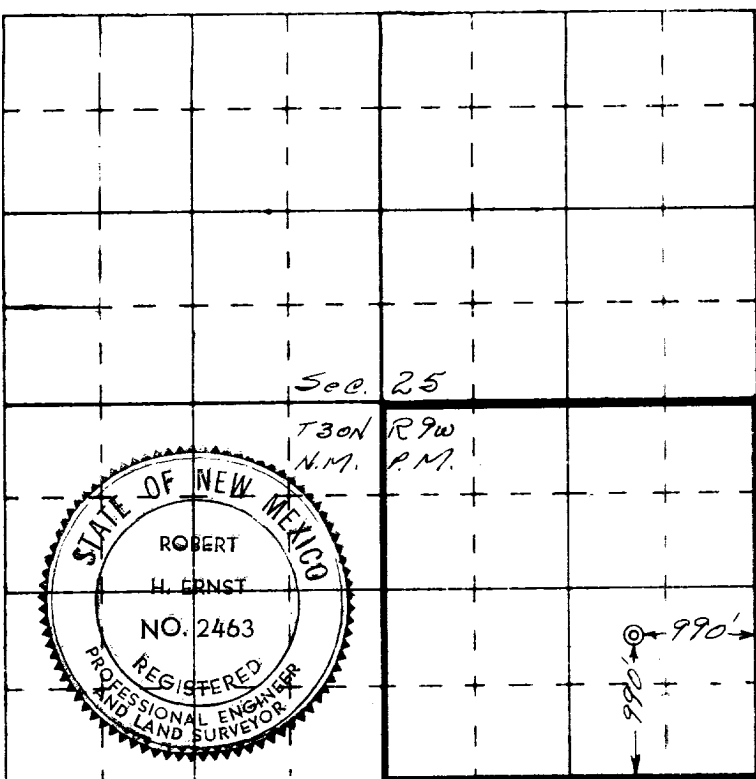
I hereby certify that the well location shown on this plat was plotted from field notes of actual surveys made by me or under my supervision, and that the same is true and correct to the best of my knowledge and belief.

7 October 1966
 Date Surveyed

Robert H. Ernst
 Registered Professional Engineer and/or Land Surveyor

Robert H. Ernst
 N. Mex. DE P. IS 2463

1
 Certificate No.



ERNST ENGINEERING CO.
 DURANGO, COLORADO