

UNITED STATES
DEPARTMENT OF THE INTERIOR
GEOLOGICAL SURVEY

APPLICATION FOR PERMIT TO DRILL, DEEPEN, OR PLUG BACK

1a. TYPE OF WORK

DRILL ☒DEEPEN ☐PLUG BACK ☐

b. TYPE OF WELL

OIL
WELL ☐GAS
WELL ☒

OTHER

SINGLE
ZONE ☐MULTIPLE
ZONE ☐

2. NAME OF OPERATOR

Tenneco Oil Company

3. ADDRESS OF OPERATOR

P. O. Box 1714, Durango, Colorado 81301

4. LOCATION OF WELL (Report location clearly and in accordance with any State requirements.)*

At surface

1170 FSL, 945 FEL, Unit *EP*

At proposed prod. zone

14. DISTANCE IN MILES AND DIRECTION FROM NEAREST TOWN OR POST OFFICE*

15. DISTANCE FROM PROPOSED*

LOCATION TO NEAREST
PROPERTY OR LEASE LINE, FT.
(Also to nearest drg. unit line, if any)

16. NO. OF ACRES IN LEASE

138.04

17. NO. OF ACRES ASSIGNED
TO THIS WELL

138.04

18. DISTANCE FROM PROPOSED LOCATION*

TO NEAREST WELL, DRILLING, COMPLETED,
OR APPLIED FOR, ON THIS LEASE, FT.

19. PROPOSED DEPTH

2760'

20. ROTARY OR CABLE TOOLS

Rotary

21. ELEVATIONS (Show whether DF, RT, GR, etc.)

5726 Gr.

22. APPROX. DATE WORK WILL START*

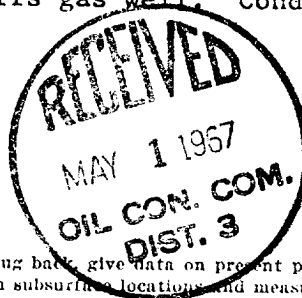
May 3, 1967

23.

PROPOSED CASING AND CEMENTING PROGRAM

SIZE OF HOLE	SIZE OF CASING	WEIGHT PER FOOT	SETTING DEPTH	QUANTITY OF CEMENT
12-1/4	8-5/8	20#	150	Circ. to surface.
7-7/8	3-1/2	9.2#	2760	Circ. to surface.

We plan to drill w/rotary to approximate T.D. 2760'. Log, run casing as shown above. Perf and frac and complete as a single Blanco Pictured Cliffs gas well. Conduct deliverability tests.



IN ABOVE SPACE DESCRIBE PROPOSED PROGRAM: If proposal is to deepen or plug back, give data on present productive zone and proposed new productive zone. If proposal is to drill or deepen directionally, give pertinent data on subsurface locations and measured and true vertical depths. Give blowout preventer program, if any.

24.

SIGNED

G. A. Ford

TITLE

Senior Production Clerk

DATE

April 27, 1967

(This space for Federal or State office use)

PERMIT NO.

APPROVAL DATE

APPROVED BY

TITLE

CONDITIONS OF APPROVAL, IF ANY:

5 USGS

1 Continental

1 File

*See Instructions On Reverse Side

RECEIVED

APR 28 1967

U. S. GEOLOGICAL SURVEY
FARMINGTON, N. M.

NEW MEXICO OIL CONSERVATION COMMISSION

WELL LOCATION AND ACERAGE DEDICATION PLAT

All distances must be from the outer boundaries of the Section

Operator TENNECO OIL COMPANY	Lease FLORANCE	Well No. 100
Unit Letter EP	Section 30	Township 30 North
Range 8 West	County San Juan	
Actual Footage Location of Well 1170	feet from the South	945 feet from the East
Producing Formation 5726' ungraded	Blanco Pictured Cliffs	Blanco Pictured Cliffs
Dedicated Acreage 138.04	Average SE/4	Acres

Outline the acreage dedicated to the subject well by colored pencil or hatchure marks on the plat below.

If more than one lease is dedicated to the well, outline each and identify the ownership thereof (both as to working interest and royalty).

If more than one lease of different ownership is dedicated to the well, have the interests of all owners been consolidated by communitization, unitization, forced-pooling, etc?

Yes ☐ No ☐ If answer is yes, type of consolidation _____

If answer is "no" list the owners and tract descriptions which have actually consolidated. (Use reverse side of this form if necessary) _____

No allowable will be assigned to the well until all interests have been consolidated (by communitization, unitization, forced-pooling, or otherwise) or until a non-standard unit, eliminating such interests, has been approved by the Commission.

CERTIFICATION

I hereby certify that the information contained herein is true and complete to the best of my knowledge and belief.

G. A. Ford
Name **G. A. Ford**
Position **Senior Production Clerk**
Company **Tenneco Oil Company**
Date **April 27, 1967**



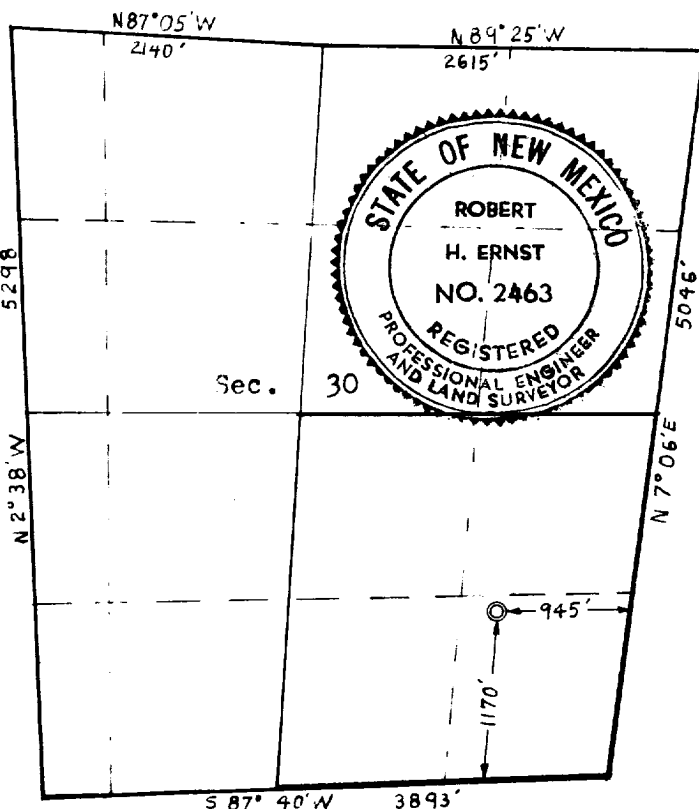
I hereby certify that the well location shown on this plat was plotted from field notes of actual surveys made by me or under my supervision, and that the same is true and correct to the best of my knowledge and belief.

6 April 1967

Date Surveyed _____
Robert H. Ernst
Registered Professional Engineer
and/or Land Surveyor

Robert H. Ernst
N. Mex. PE & LS 2463

Certificate No. _____



Ernst Engineering Co.
Durango, Colorado