

Project I
Brazos, NM
Denny E. Faust
Drawer DD, Aztec, NM 88221
DEPUTY OIL & GAS INSPECTOR
District III
10 Rio Brazos Rd. Aztec, NM 87410

State of New Mexico
Energy, Minerals and Natural Resources Department

SUBMIT 1 COPY TO
APPROPRIATE
DISTRICT OFFICE
AND 1 COPY TO
SANTA FE OFFICE

OIL CONSERVATION DIVISION

2040 South Pacheco Street
Santa Fe, New Mexico 87505

JUL 1 8 1997

PIT REMEDIATION AND CLOSURE REPORT

Operator: PNM Gas Services (Amoco) Telephone: 324-3764

Address: 603 W. Elm Street Farmington, NM 87401

Facility or Well Name: Jacques #1

Location: Unit: M Sec. 25 T. 30 N R. 9 W County San Juan

Pit Type: Separator Dehydrator ☒ Other No

Land Type: BLM State Fee ☒ Other No

Pit Location: Pit dimensions: length 20 width 20 depth 3

(Attach diagram) Reference: wellhead ☒ other

Footage from reference: 156'

Direction from reference: 10 Degrees ☒ East North ☒
West South

Depth to Ground Water: Less than 50 feet (20 points)
50 feet to 99 feet (10 points)
(Vertical distance from contaminants to seasonal high water elevation of ground water) Greater than 100 feet (0 points) 20

Wellhead Protection Area: (Less than 200 feet from a private domestic water source, or, less than 1,000 feet from all other water sources) Yes (20 points)
No (0 points) 20

Distance to Surface Water: Less than 200 feet (20 points)
200 feet to 1,000 feet (10 points)
(Horizontal distance to perennial lakes, ponds, rivers, streams, creeks, irrigation canals and ditches) Greater than 1,000 feet (0 points) 10

RANKING SCORE (TOTAL POINTS): 50

RECEIVED
APR 24 1997
OIL CON. DIV.
DIST. 3

Date Remediation Started:

7/17/96

Date Completed:

7/19/96

Remediation Method:

Excavation ☒

Approx. Cubic Yard

1109

(Check all appropriate sections)

Landfarmed ☒

Amount Landfarmed (cubic yds) 1109

Other _____

Remediation Location:

Onsite _____

Offsite

234 yds - Tierra

875

(i.e., landfarmed onsite, name and location of offsite facility)

yds - Sandoval Gas Com P&A

Backfill Material Location: _____

General Description of Remedial Action:

Excavated contaminated soil to a pit size of 39'x48'x16' and transported soil to two offsite commercial landfarms.

Groundwater was encountered at 14'. Water sample was taken - sample was below OCD groundwater standards. Lab analysis attached.

Ground Water Encountered:

No _____

Yes

☒

Depth

14' _____

Final Pit Closure
Sampling:

Sample Location

5 pt. composite-4 side walls and center of pit bottom.

(if multiple samples, attach sample result and diagram of sample locations and depths.)

Sample depth

18' _____

Sample date

7/18/96

Sample time

8:30:00 AM

Sample Results

Benzene (ppm)

0.8035

Total BTEX (ppm)

15.9928

Field headspace (ppm)

TPH

22.30

Method

8015A

Vertical Extent (ft) _____

Risk Assessment form attached

Yes _____

No _____

Ground Water Sample:

Yes ☒

No _____

I HEREBY CERTIFY THAT THE INFORMATION ABOVE IS TRUE AND COMPLETE TO THE BEST OF MY KNOWLEDGE AND MY BELIEF

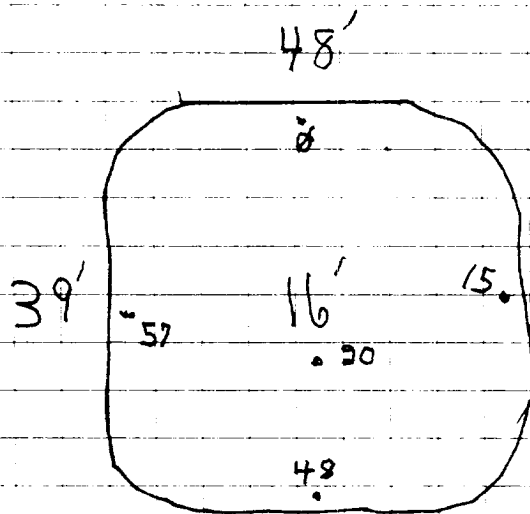
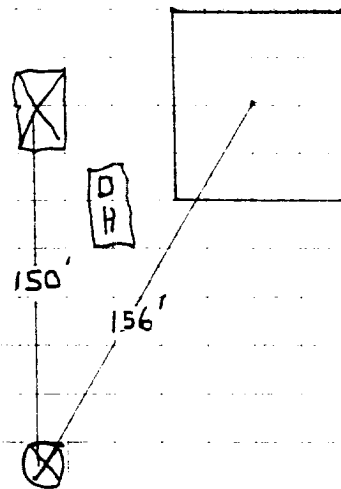
DATE April 28, 1997

SIGNATURE

PRINTED NAME
AND TITLEDenver Bearden
Administrator III

Jacques #1
 Amoco
 Sec. 25-30N-9W-M

156' to pit from WH
 10° E of N



14' hit water
 18' cobble 20 ppm

1109 yards

OFF: (505) 325-5667

ON SITE

TECHNOLOGIES, LTD.

LAB: (505) 325-1556

Diesel Range Organics

Attn: *Denver Bearden*
Company: *PNM Gas Services*
Address: *603 W. Elm*
City, State: *Farmington, NM 87401*

Date: *19-Jul-96*
COC No.: *4906*
Sample No. *11539*
Job No. *2-1000*

Project Name: *PNM Gas Services - Jacques #1*
Project Location: *9607180830; 5pt. Composite, 18' Bottom - 16' Walls*
Sampled by: *GC* Date: *18-Jul-96* Time: *8:30*
Analyzed by: *HR/DC* Date: *19-Jul-96*
Sample Matrix: *Soil*

Laboratory Analysis

Parameter	Result	Unit of Measure	Detection Limit	Unit of Measure
Diesel Range Organics (C10 - C28)	22.3	mg/kg	5.0	mg/kg

Quality Assurance Report

DRO QC No.: *0479-QC*


Calibration Check

Parameter	Method Blank	Unit of Measure	True Value	Analyzed Value	% Diff	Limit
Diesel Range (C10 - C28)	<5.0	ppm	2,000	1,912	4.4	15%

Matrix Spike

Parameter	1 - Percent Recovered	2 - Percent Recovered	Limit	%RSD	Limit
Diesel Range (C10-C28)	98	100	(70-130)	2	20%

Method - SW-846 EPA Method 8015A mod. - Nonhalogenated Volatile Hydrocarbons by Gas Chromatography

Approved by: Date: *7/19/96*

P.O. BOX 2606 • FARMINGTON, NM 87499

- TECHNOLOGY BLENDING INDUSTRY WITH THE ENVIRONMENT -

OFF: (505) 325-5667



LAB: (505) 325-1556

AROMATIC VOLATILE ORGANICS

Attn: *Denver Bearden*
Company: *PNM Gas Services*
Address: *603 W. Elm*
City, State: *Farmington, NM 87401*

Date: *19-Jul-96*
COC No.: *4906*
Sample No. *11539*
Job No. *2-1000*

Project Name: *PNM Gas Services - Jacques #1*
Project Location: *9607180830; 5pt. Composite, 18' Bottom - 16' Walls*
Sampled by: *GC* Date: *18-Jul-96* Time: *8:30*
Analyzed by: *DC* Date: *18-Jul-96*
Sample Matrix: *Soil*

Aromatic Volatile Organics

Component	Result	Units of Measure	Detection Limit	Units of Measure
<i>Benzene</i>	<i>803.5</i>	<i>ug/kg</i>	<i>0.2</i>	<i>ug/kg</i>
<i>Toluene</i>	<i>1867.9</i>	<i>ug/kg</i>	<i>0.2</i>	<i>ug/kg</i>
<i>Ethylbenzene</i>	<i>1904.4</i>	<i>ug/kg</i>	<i>0.2</i>	<i>ug/kg</i>
<i>m,p-Xylene</i>	<i>7494.4</i>	<i>ug/kg</i>	<i>0.2</i>	<i>ug/kg</i>
<i>o-Xylene</i>	<i>3922.6</i>	<i>ug/kg</i>	<i>0.2</i>	<i>ug/kg</i>
	<i>TOTAL</i>	<i>15992.8</i>		<i>ug/kg</i>

Method - SW-846 EPA Method 8020 Aromatic Volatile Organics by Gas Chromatography

Approved by: *[Signature]*
Date: *7/19/96*

P.O. BOX 2606 • FARMINGTON, NM 87499

- TECHNOLOGY BLENDING INDUSTRY WITH THE ENVIRONMENT -

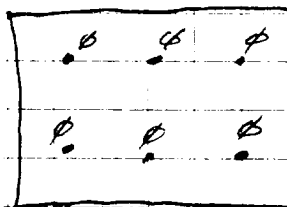
Jacques #1
Amoco
Sec. 25, 30N, 9W

9-10-96

Land Farm: Sandoval Gas Com A
Amoco
Sec. 35, 30N, 9W

Composite sample #: 9609100945 6pt.

Soil vapor head space PID readings: 3.1 ppm



2'-12" depth

OFF: (505) 325-5667



LAB: (505) 325-1556

Diesel Range Organics

Attn: *Denver Bearden*
Company: *PNM Gas Services*
Address: *603 W. Elm*
City, State: *Farmington, NM 87401*

Date: *12-Sep-96*
COC No.: *5004*
Sample No. *12086*
Job No. *2-1000*

Project Name: ***PNM Gas Services - Jacquez #1 Landfarm: Sandoval Gas Com P&A***
Project Location: ***9609101000; 6pt. Composite, 2"-12" depth***
Sampled by: *GC* Date: *10-Sep-96* Time: *10:00*
Analyzed by: *DC/HR* Date: *12-Sep-96*
Sample Matrix: *Soil*

Laboratory Analysis

<i>Parameter</i>	<i>Result</i>	<i>Unit of Measure</i>	<i>Detection Limit</i>	<i>Unit of Measure</i>
<i>Diesel Range Organics (C10 - C28)</i>	<i><5.0</i>	<i>mg/kg</i>	<i>5.0</i>	<i>mg/kg</i>

Quality Assurance ReportDRO QC No.: *0489-QC****Calibration Check***

<i>Parameter</i>	<i>Method Blank</i>	<i>Unit of Measure</i>	<i>True Value</i>	<i>Analyzed Value</i>	<i>% Diff</i>	<i>Limit</i>
<i>Diesel Range (C10 - C28)</i>	<i><5.0</i>	<i>ppm</i>	<i>100</i>	<i>104</i>	<i>4.2</i>	<i>15%</i>

Matrix Spike

<i>Parameter</i>	<i>1 - Percent Recovered</i>	<i>2 - Percent Recovered</i>	<i>Limit</i>	<i>%RSD</i>	<i>Limit</i>
<i>Diesel Range (C10-C28)</i>	<i>98</i>	<i>114</i>	<i>(70-130)</i>	<i>11</i>	<i>20%</i>

Method - *SW-846 EPA Method 8015A mod. - Nonhalogenated Volatile Hydrocarbons by Gas Chromatography*

Approved by: *[Signature]*
Date: *9/12/96*

P.O. BOX 2606 • FARMINGTON, NM 87499

- TECHNOLOGY BLENDING INDUSTRY WITH THE ENVIRONMENT -

**Diesel Range Organics**

Attn: *Denver Bearden*
Company: *PNM Gas Services*
Address: *603 W. Elm*
City, State: *Farmington, NM 87401*

Date: *12-Sep-96*
COC No.: *5003*
Sample No. *12085*
Job No. *2-1000*

Project Name: *PNM Gas Sevices - Jacquez #1 Landfarm: Sandoval Gas Com A*
Project Location: *9609100945; 6pt. Composite, 2"-12" depth*
Sampled by: *GC* Date: *10-Sep-96* Time: *9:45*
Analyzed by: *DC/HR* Date: *12-Sep-96*
Sample Matrix: *Soil*

Laboratory Analysis

Parameter	Result	Unit of Measure	Detection Limit	Unit of Measure
Diesel Range Organics (C10 - C28)	< 5.0	mg/kg	5.0	mg/kg


Quality Assurance ReportDRO QC No.: *0489-QC***Calibration Check**

Parameter	Method Blank	Unit of Measure	True Value	Analyzed Value	% Diff	Limit
Diesel Range (C10 - C28)	< 5.0	ppm	100	104	4.2	15%

Matrix Spike

Parameter	1 - Percent Recovered	2 - Percent Recovered	Limit	%RSD	Limit
Diesel Range (C10-C28)	98	114	(70-130)	11	20%

Method - SW-846 EPA Method 8015A mod. - Nonhalogenated Volatile Hydrocarbons by Gas Chromatography

Approved by: 
Date: *9/12/96*

P.O. BOX 2606 • FARMINGTON, NM 87499

- TECHNOLOGY BLENDING INDUSTRY WITH THE ENVIRONMENT -

OFF: (505) 325-5667

ON SITE

TECHNOLOGIES, LTD.

LAB: (505) 325-1556

AROMATIC VOLATILE ORGANICS

Attn: *Denver Bearden*
Company: *PNM Gas Services*
Address: *603 W. Elm*
City, State: *Farmington, NM 87401*

Date: 18-Jul-96
COC No.: 4907
Sample No.: 11540
Job No.: 2-1000

Project Name: *PNM Gas Services - Jacques #1*
Project Location: *9607180800; 14' Middle of Pit*
Sampled by: GC Date: 18-Jul-96 Time: 8:00
Analyzed by: HR Date: 18-Jul-96
Sample Matrix: *Water*

Laboratory Analysis

Parameter	Result	Unit of Measure	Detection Limit	Unit of Measure
<i>Benzene</i>	8.7	ug/L	0.2	ug/L
<i>Toluene</i>	60.5	ug/L	0.2	ug/L
<i>Ethylbenzene</i>	16.7	ug/L	0.2	ug/L
<i>m,p-Xylene</i>	178.7	ug/L	0.2	ug/L
<i>o-Xylene</i>	28.8	ug/L	0.2	ug/L
	TOTAL	293.5	ug/L	

Method - SW-846 EPA Method 8020 Aromatic Volatile Organics by Gas Chromatography

Approved by: *[Signature]*
Date: 7/18/96

P.O. BOX 2606 • FARMINGTON, NM 87499

- TECHNOLOGY BLENDING INDUSTRY WITH THE ENVIRONMENT -