

UNITED STATES
DEPARTMENT OF THE INTERIOR
GEOLOGICAL SURVEY

30-045-20663

APPLICATION FOR PERMIT TO DRILL, DEEPEN, OR PLUG BACK

1a. TYPE OF WORK

DRILL ☒DEEPEN ☐PLUG BACK ☐

b. TYPE OF WELL

OIL
WELL ☐GAS
WELL ☒

OTHER

SINGLE
ZONE ☒MULTIPLE
ZONE ☐

2. NAME OF OPERATOR

PAN AMERICAN PETROLEUM CORPORATION

3. ADDRESS OF OPERATOR

501 Airport Drive, Farmington, New Mexico 87401

4. LOCATION OF WELL (Report location clearly and in accordance with any State requirements.)*

At surface

880' FNL & 1540' FEL

At proposed prod. zone

Same

14. DISTANCE IN MILES AND DIRECTION FROM NEAREST TOWN OR POST OFFICE*

24 miles south of Ignacio, Colorado

16. DISTANCE FROM PROPOSED*

LOCATION TO NEAREST
PROPERTY OR LEASE LINE, FT.
(Also to nearest drlg. unit line, if any)

16. NO. OF ACRES IN LEASE

2314.56

17. NO. OF ACRES ASSIGNED
TO THIS WELL

320

18. DISTANCE FROM PROPOSED LOCATION*
TO NEAREST WELL, DRILLING, COMPLETED,
OR APPLIED FOR, ON THIS LEASE, FT.

19. PROPOSED DEPTH

7950'

20. ROTARY OR CABLE TOOLS

Rotary

21. ELEVATIONS (Show whether DF, RT, GR, etc.)

Will report later

22. APPROX. DATE WORK WILL START*

July 31, 1970

23. PROPOSED CASING AND CEMENTING PROGRAM

SIZE OF HOLE	SIZE OF CASING	WEIGHT PER FOOT	SETTING DEPTH	QUANTITY OF CEMENT
15"	10-3/4"	32.75#	400'	300 SX.
9-5/8"	7-5/8"	26.4#	3600'	600 SX.
6-3/4"	4-1/2"	11.6#	7950'	700 SX.

Well to be drilled thru the Dakota and completion designed from open hole logs.

Copy of location plat attached.

IN ABOVE SPACE DESCRIBE PROPOSED PROGRAM: If proposal is to deepen or plug back, give data on present productive zone and proposed new productive zone. If proposal is to drill or deepen directionally, give pertinent data on subsurface locations and measured and true vertical depths. Give blowout preventer program, if any.

24.

SIGNED

J. W. Eaton Jr.

TITLE

Area Engineer

DATE

July 7, 1970

(This space for Federal or State office use)

APPROVAL DATE

TITLE

DATE

APPROVED

APPROVED BY

JUL 8 1970

CONDITIONS OF APPROVAL, IF ANY:

*Okal*JERRY W. LONG
DISTRICT ENGINEER

*See Instructions On Reverse Side

**NEW MEXICO OIL CONSERVATION COMMISSION
WELL LOCATION AND ACERAGE DEDICATION PLAT**

All distances must be from the outer boundaries of the Section

Operator PAN AMERICAN PETROLEUM CORPORATION			Lease Horace F. McKay		Well No. 1
Unit Letter A R	Section 28	Township 31 North	Range 7 West	County San Juan	
Actual Footage Location of Well: 880 feet from the North line and 1540 feet from the East line					
Ground Level Elev. Report Later	Producing Formation Dakota	Pool Basin Dakota	Dedicated Acreage: E/2 320 Acres		

1. Outline the acreage dedicated to the subject well by colored pencil or hachure marks on the plat below.
2. If more than one lease is dedicated to the well, outline each and identify the ownership thereof (both as to working interest and royalty).
3. If more than one lease of different ownership is dedicated to the well, have the interests of all owners been consolidated by communitization, unitization, force-pooling, etc?

() Yes (X) No If answer is "yes," type of consolidation

If answer is "no," list the owners and tract descriptions which have actually consolidated. (Use reverse side of this form if necessary.)

No allowable will be assigned to the well until all interests have been consolidated (by communitization, unitization, force-pooling, or otherwise) or until a non standard unit, eliminating such interests, has been approved by the Commission.

CERTIFICATION

I hereby certify that the information contained herein is true and complete to the best of my knowledge and belief.

G. W. Eaton, Jr.
Name

G. W. Eaton, Jr.
Position

Area Engineer
Company

PAN AMERICAN PETR. CORP.
Date

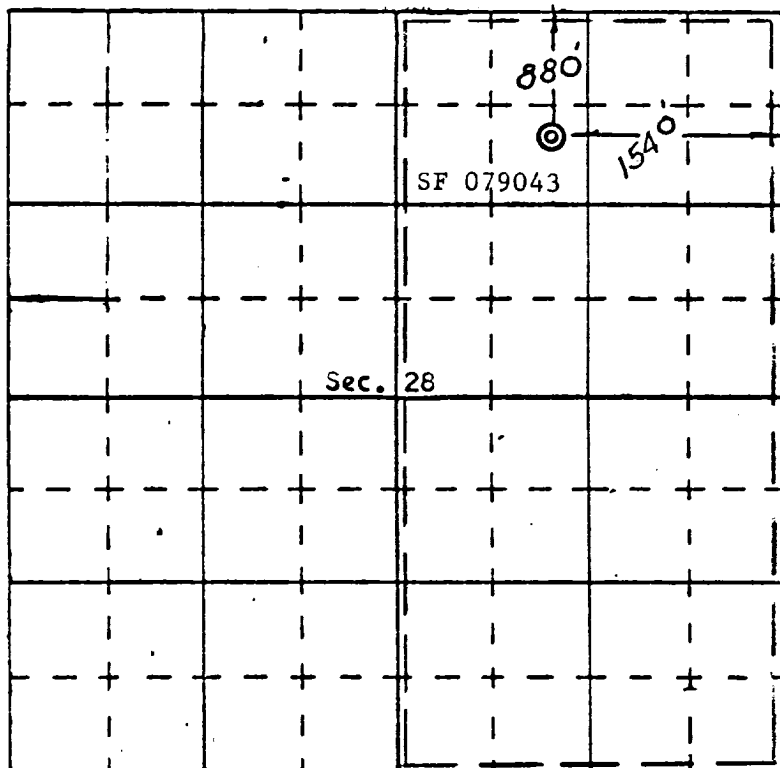
July 7, 1970

STATE OF NEW MEXICO
I hereby certify that the well location shown on this plat was plotted from field notes of actual surveys made by me or under my supervision, and that the same is true and correct to the best of my knowledge and belief.
REGISTERED LAND SURVEYOR

Date Surveyed

June 23, 1970
Registered Professional Engineer
and/or Land Surveyor

E. J. Eaton
Certificate No. **3602**



N