

JAN 12 1987

CERTIFIED--RETURN RECEIPT REQUESTED

El Paso Natural Gas Company
P.O. Box 4289
Farmington, New Mexico 87499

Gentlemen:

Reference is made to your well No. 2 Murphy, SW/4SW/4 sec. 24, T. 30 N., R. 11 W., San Juan County, New Mexico, lease SF-080113 and your Sundry Notice dated September 19, 1985, requesting approval to isolate a suspected casing leak and test well for 90 days to determine if the well is to be permanently repaired or plugged and abandoned. On June 2, 1986, you requested approval to place the well in a long term shut-in status. It was approved until June 12, 1987. Therefore, the 90 day test period as approved on your September 19, 1985 Sundry Notice has expired. When the long term shut-in status expires on June 12, 1987, you will be required to test the well which will verify production capabilities and casing integrity if you wish to continue the long term shut-in status.

Sincerely,

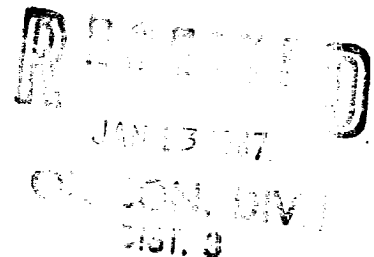
/s/ John L. Keller

Ron Fellows
Area Manager

1 Enclosure

cc:
ADO (015)
NMOCD (2)
Well file
3162.3-1.0

016:SMason: csh: 1/12/87



3162-3-1-9 (016)
3162-3-1-9 (016)

JAN 18 1987

URGENT - RETURN TO OFFICE OF THE SECRETARY

El Paso Natural Gas Company
P.O. Box 4289
Tulsa, Oklahoma 74109

Enclosure

Reference is made to your letter dated September 12, 1986, requesting approval to isolate a suspected casing leak and test well for 90 days to determine if the well is to be permanently repaired or plugged and abandoned. On June 12, 1987, you requested approval to place the well in a long term shut-in status. As approved until June 12, 1987. Therefore, the 90 day test period as approved on your September 12, 1986 letter has expired. When the long term shut-in status expires on June 12, 1987, you will be required to test the well which will verify production capabilities and casing integrity if you wish to continue the long term shut-in status.

Sincerely,

cc: John A. Kell

Ron Fellows
Area Manager

1 Enclosure

cc:
ADG (016)
WCCO (2)
Well File
3162-3-1-9

016:Shannon:cmh:1/11/87

JAN 13 1987
DIVISION
3162-3-1-9