

**UNITED STATES
DEPARTMENT OF THE INTERIOR
GEOLOGICAL SURVEY**

30-045-20697

APPLICATION FOR PERMIT TO DRILL, DEEPEN, OR PLUG BACK

1a. TYPE OF WORK
 DRILL DEEPEN PLUG BACK

b. TYPE OF WELL
 OIL WELL GAS WELL OTHER
 SINGLE ZONE MULTIPLE ZONE

2. NAME OF OPERATOR
RIJAN OIL COMPANY, INC.

3. ADDRESS OF OPERATOR
900 Bank of New Mexico Building, Albuquerque, N.M. 87101

4. LOCATION OF WELL (Report location clearly and in accordance with any State requirements.)*
 At surface
2475' fwl, 700' fwl
 At proposed prod. zone
2475' fwl, 700' fwl

14. DISTANCE IN MILES AND DIRECTION FROM NEAREST TOWN OR POST OFFICE*
7 miles east of Shiprock, New Mexico

15. DISTANCE FROM PROPOSED* LOCATION TO NEAREST PROPERTY OR LEASE LINE, FT. (Also to nearest drlg. unit line, if any)
700'

16. NO. OF ACRES IN LEASE
640

17. NO. OF ACRES ASSIGNED TO THIS WELL
40

18. DISTANCE FROM PROPOSED LOCATION* TO NEAREST WELL, DRILLING, COMPLETED, OR APPLIED FOR, ON THIS LEASE, FT.
360'

19. PROPOSED DEPTH
1000'

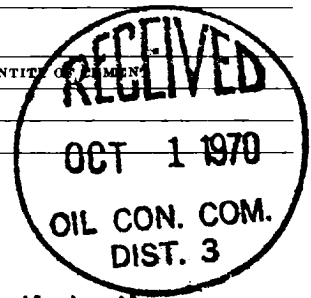
20. ROTARY OR CABLE TOOLS
Rotary

21. ELEVATIONS (Show whether DF, RT, GR, etc.)
5089' GR

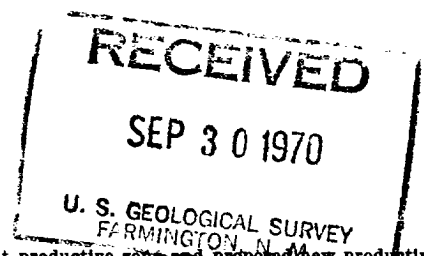
22. APPROX. DATE WORK WILL START*
September 29, 1970

23. **PROPOSED CASING AND CEMENTING PROGRAM**

SIZE OF HOLE	SIZE OF CASING	WEIGHT PER FOOT	SETTING DEPTH	QUANTITY OF CEMENT
9-5/8"	7-5/8"	17.5#	30'	15 BX
6-1/4"	4-1/2"	9.5#	950'	40 BX



Plan to drill with rotary tools to approximately 950' to 1000' depth to the top of the Dakota formation. If production is obtained, plan to complete by setting 4 1/2" casing in the top of the Dakota formation.



IN ABOVE SPACE DESCRIBE PROPOSED PROGRAM: If proposal is to deepen or plug back, give data on present productive zone and proposed new productive zone. If proposal is to drill or deepen directionally, give pertinent data on subsurface locations and measured and true vertical depths. Give blowout preventer program, if any.

24. SIGNED W. P. Rees TITLE Geologist DATE September 25, 1970

(This space for Federal or State office use)

PERMIT NO. _____ APPROVAL DATE _____

APPROVED BY W TITLE _____ DATE _____

CONDITIONS OF APPROVAL, IF ANY:

Instructions

General: This form is designed for submitting proposals to perform certain well operations, as indicated, on all types of lands and leases for appropriate action by either a Federal or a State agency, or both, pursuant to applicable Federal and/or State laws and regulations. Any necessary special instructions concerning the use of this form and the number of copies to be submitted, particularly with regard to local, area, or regional procedures and practices, either are shown below or will be issued by, or may be obtained from, the local Federal and/or State office.

Item 1: If the proposal is to redrill to the same reservoir at a different subsurface location or to a new reservoir, use this form with appropriate notations. Consult applicable State or Federal regulations concerning subsequent work proposals or reports on the well.

Item 4: If there are no applicable State requirements, locations on Federal or Indian land should be described in accordance with Federal requirements. Consult local State or Federal office for specific instructions.

Item 14: Needed only when location of well cannot readily be found by road from the land or lease description. A plat, or plats, separate or on this reverse side, showing the roads to, and the surveyed location of, the well, and any other required information, should be furnished when required by Federal or State agency offices.

Items 15 and 18: If well is to be, or has been directionally drilled, give distances for subsurface location of hole in any present or objective production zone.

Item 22: Consult applicable Federal or State regulations, or appropriate officials, concerning approval of the proposal before operations are started.

NEW MEXICO OIL CONSERVATION COMMISSION
WELL LOCATION AND ACREAGE DEDICATION PLAT

Form C-102
Supersedes C-128
Effective 1-1-65

All distances must be from the outer boundaries of the Section.

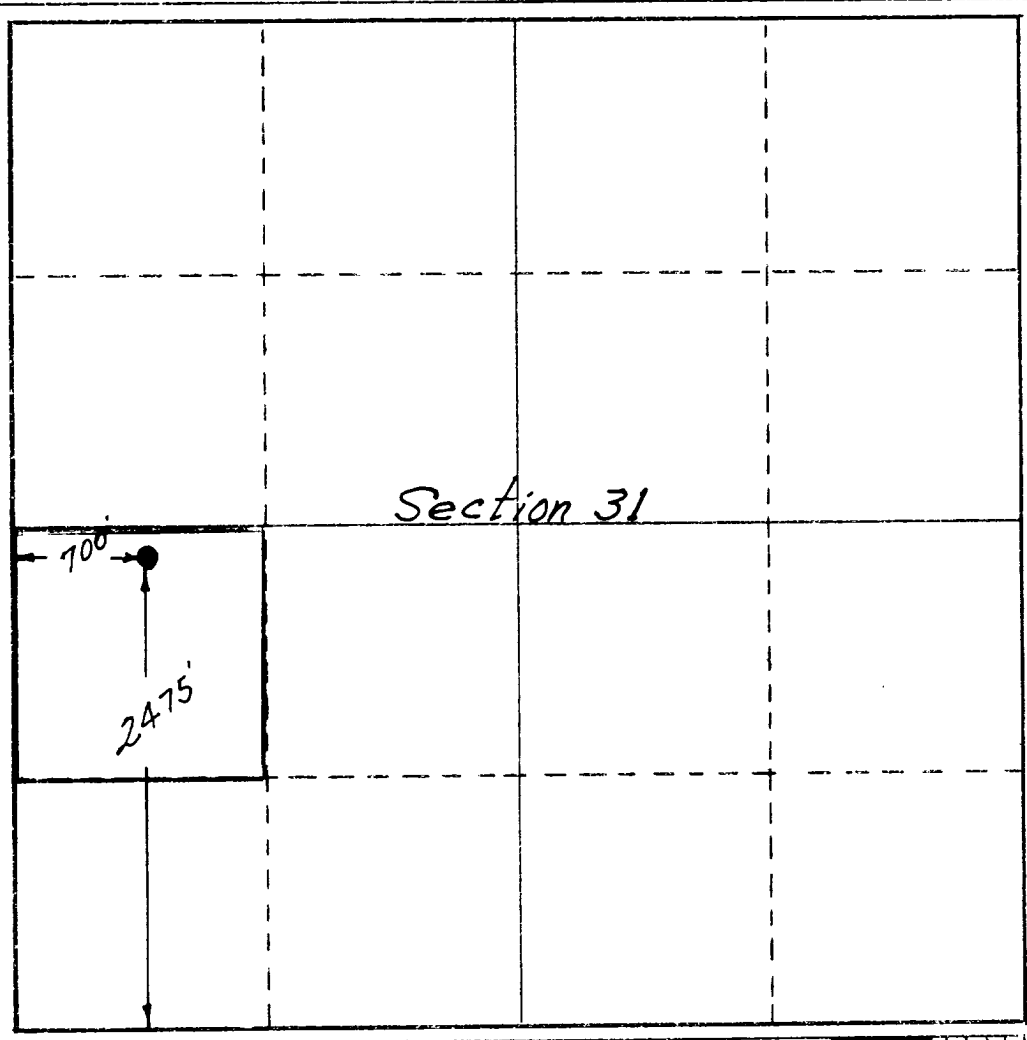
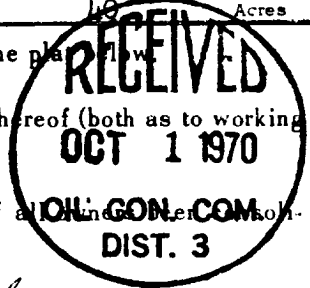
Operator Rijan Oil Company, Inc.		Lease Navajo Tribal No. 14-20-0603-742		Well No. 12
Unit Letter L	Section 31	Township 30 North	Range 16 West	County San Juan
Actual Footage Location of Well: 2475 feet from the South line and 700 feet from the West line				
Ground Level Elev. 5089	Producing Formation Dakota	Pool Slick Rock	Dedicated Acreage: 18 Acres	

- Outline the acreage dedicated to the subject well by colored pencil or hachure marks on the plat.
- If more than one lease is dedicated to the well, outline each and identify the ownership thereof (both as to working interest and royalty).
- If more than one lease of different ownership is dedicated to the well, have the interests of all leases consolidated by communitization, unitization, force-pooling, etc?

Yes No If answer is "yes," type of consolidation One interest only

If answer is "no," list the owners and tract descriptions which have actually been consolidated. (Use reverse side of this form if necessary.) One interest only

No allowable will be assigned to the well until all interests have been consolidated (by communitization, unitization, forced-pooling, or otherwise) or until a non-standard unit, eliminating such interests, has been approved by the Commission.



CERTIFICATION

I hereby certify that the information contained herein is true and complete to the best of my knowledge and belief.

Name: Val P. Reese
 Position: Geologist
 Company: Rijan Oil Company, Inc.
 Date: September 30, 1970

I hereby certify that the well location shown on this plat was plotted from field notes of actual surveys made by me or under my supervision, and that the same is true and correct to the best of my knowledge and belief.

Date Surveyed: September 25, 1970
 Registered Professional Engineer and Land Surveyor
A. L. Poteet
 Certificate No. 3084

