

UNITED STATES
DEPARTMENT OF THE INTERIOR
GEOLOGICAL SURVEY

APPLICATION FOR PERMIT TO DRILL, DEEPEN, OR PLUG BACK

1a. TYPE OF WORK

DRILL ☒DEEPEN ☐PLUG BACK ☐

b. TYPE OF WELL

OIL
WELL ☐GAS
WELL ☒

OTHER

SINGLE
ZONE ☒MULTIPLE
ZONE ☐

2. NAME OF OPERATOR

El Paso Natural Gas Company

3. ADDRESS OF OPERATOR

PO Box 990, Farmington, NM 87401

4. LOCATION OF WELL (Report location clearly and in accordance with any State requirements.*)

At surface

1850'S, 720'W

At proposed prod. zone

14. DISTANCE IN MILES AND DIRECTION FROM NEAREST TOWN OR POST OFFICE*

15. DISTANCE FROM PROPOSED*

LOCATION TO NEAREST
PROPERTY OR LEASE LINE, FT.
(Also to nearest drilg. unit line, if any)

18. DISTANCE FROM PROPOSED LOCATION*

TO NEAREST WELL, DRILLING, COMPLETED,
OR APPLIED FOR, ON THIS LEASE, FT.

16. NO. OF ACRES IN LEASE

19. PROPOSED DEPTH

3076'

17. NO. OF ACRES ASSIGNED
TO THIS WELL

155.16

20. ROTARY OR CABLE TOOLS

Rotary

21. ELEVATIONS (Show whether DF, RT, GR, etc.)

6304'GL

22. APPROX. DATE WORK WILL START*

23.

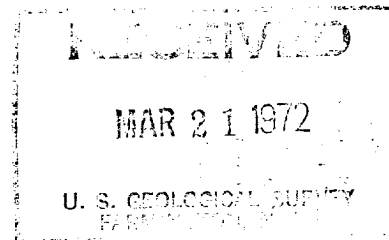
PROPOSED CASING AND CEMENTING PROGRAM

| SIZE OF HOLE | SIZE OF CASING | WEIGHT PER FOOT | SETTING DEPTH | QUANTITY OF CEMENT |
|--------------|----------------|-----------------|---------------|----------------------------|
| 12 1/4" | 8 5/8" | 24.0# | 100' | 100 cu. ft. to circulate |
| 6 3/4" | 2 7/8" | 6.4# | 3076' | 300 cu. ft. Est. Top 2000' |

Selectively perforate and sandwater fracture the Pictured Cliffs formation.

Lots 1, 2 and 3 E/2 NW/4, NE/4 SW/4 of Section 19 is dedicated to this well.

NSU order R 3669



IN ABOVE SPACE DESCRIBE PROPOSED PROGRAM: If proposal is to deepen or plug back, give data on present productive zone and proposed new productive zone. If proposal is to drill or deepen directionally, give pertinent data on subsurface locations and measured and true vertical depths. Give blowout preventer program, if any.

24.

Original Signed F. H. WOOD

SIGNED

TITLE

Petroleum Engineer

DATE March 20, 1972

(This space for Federal or State office use)

PERMIT NO.

APPROVAL DATE

APPROVED BY

TITLE

DATE

CONDITIONS OF APPROVAL, IF ANY:

*See Instructions On Reverse Side

NEW MEXICO OIL CONSERVATION COMMISSION
WELL LOCATION AND ACREAGE DEDICATION PLAT

Supersedes O.C.C.
Form No. 1-67

All distances must be from the center of the well.

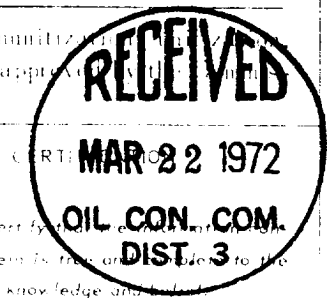
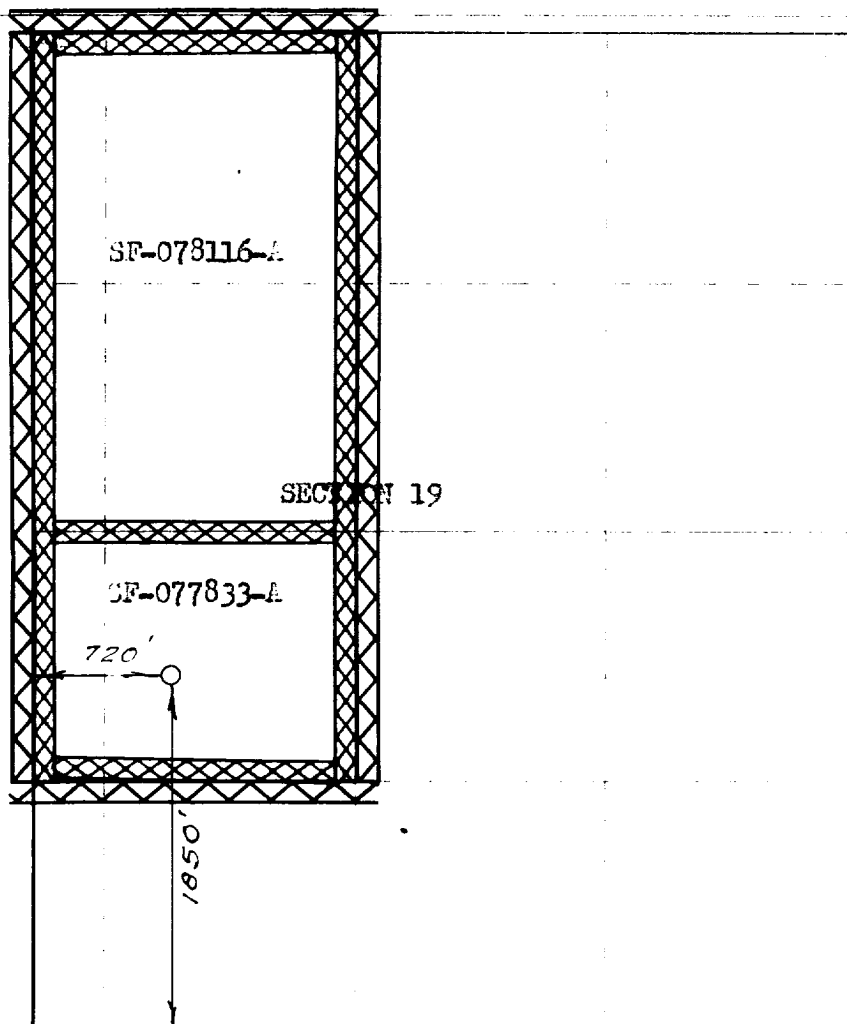
| | | | | | |
|-----------------------------|-----------------|-----------|------------------------|---------------|--------|
| EL PASO NATURAL GAS COMPANY | | MANSFIELD | | (SF-077833-A) | 10 |
| K | 19 | 30-N | 9-W | SAN JUAN | |
| 1850' | SOUTH | | 720' | WEST | |
| 630' | PICTURED CLIFFS | | BLANCO PICTURED CLIFFS | | 155.10 |

1. Outline the acreage dedicated to the subject well by colored pencil or hatchure marks on the plat below.
2. If more than one lease is dedicated to the well, outline each and identify the ownership thereof (both as to working interest and royalty).
3. If more than one lease of different ownership is dedicated to the well, have the interests of all owners been consolidated by communitization, unitization, force-pooling, etc?

☒ Yes ☐ No If answer is "yes," type of consolidation communitization

If answer is "no," list the owners and tract descriptions which have actually been consolidated. (Use reverse side of this form if necessary.)

No allowable will be assigned to the well until all interests have been consolidated (by communitization, unitization, force-pooling, or otherwise) or until a non-standard unit, eliminating such interests, has been approved by the Commission.



Original Signed F. H. WOOD
Petroleum Engineer
El Paso Natural Gas Co.

March 21, 1972

I hereby certify that the well location shown on this plat was plotted from field notes of actual survey made by me or by a duly licensed surveyor of the same State and is correct to the best of my knowledge and belief.

FEBRUARY 16, 1972

Paul C. Miller
1760