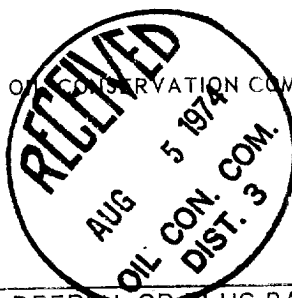


NO. OF COPIES RECEIVED	6
DISTRIBUTION	
SANTA FE	1
FILE	1
U.S.G.S.	2
LAND OFFICE	1
OPERATOR	1

NEW MEXICO OIL CONSERVATION COMMISSION



30-045-21065

Form C-101
Revised 1-1-65

5A. Indicate Type of Lease	
STATE <input type="checkbox"/>	FEE <input checked="" type="checkbox"/>

5. State Oil & Gas Lease No.

APPLICATION FOR PERMIT TO DRILL, DEEPEN, OR PLUG BACK

1a. Type of Work		7. Unit Agreement Name	
b. Type of Well OIL WELL <input type="checkbox"/> GAS WELL <input checked="" type="checkbox"/> OTHER <input type="checkbox"/>		8. Farm or Lease Name Lester	
2. Name of Operator Southern Union Production Company		9. Well No. 1	
3. Address of Operator P. O. Box 808, Farmington, New Mexico 87401		10. Field and Pool, or Wildcat Aztec Pictured Cliffs Blanco Mesaverde	
4. Location of Well UNIT LETTER H LOCATED 1670 FEET FROM THE North LINE AND 1010 FEET FROM THE East LINE OF SEC. 3 TWP. 30N RGE. 11W NMPM		12. County San Juan	
19. Proposed Depth 4775		19A. Formation Pictured Cliffs Mesaverde	
21. Elevations (Show whether DF, RT, etc.) 5749 Ungraded Ground		20. Rotary or C.T. Rotary	
21A. Kind & Status Plug. Bond State Wide		22. Approx. Date Work will start November 1, 1972	

23.

PROPOSED CASING AND CEMENT PROGRAM

SIZE OF HOLE	SIZE OF CASING	WEIGHT PER FOOT	SETTING DEPTH	SACKS OF CEMENT	EST. TOP
12-1/4"	8-5/8"	24.0#	300 Ft.	200 sks.	Surface
7-7/8"	5-1/2"	15.50#	4775	1300 cu. ft.	Surface

We propose to drill a dual Pictured Cliffs - Mesaverde well to a total depth of approx. 4775 ft. Logs will be run to evaluate the productive zones and all zones will be perforated accordingly. The Pictured Cliffs and Mesaverde will be sand fraced to stimulate production. 1-1/2" tubing will be run to Mesaverde with a production packer set on top of formation at approx. 3800 ft. 1-1/4" tubing will be run to Pictured Cliffs.

APPROVAL VALID
FOR 90 DAYS UNLESS
DRILLING COMMENCED,

EXPIRES 11-4-74

IN ABOVE SPACE DESCRIBE PROPOSED PROGRAM: IF PROPOSAL IS TO DEEPEN OR PLUG BACK, GIVE DATA ON PRESENT PRODUCTIVE ZONE AND PROPOSED NEW PRODUCTIVE ZONE. GIVE BLOWOUT PREVENTER PROGRAM, IF ANY.

I hereby certify that the information above is true and complete to the best of my knowledge and belief.

Signed B. B. Vanderslice Title Area Superintendent Date August 2, 1974

(This space for State Use)

Original Signed by Emery C. Arnold

APPROVED BY _____ TITLE SUPERVISOR DIST. #3 DATE AUG 5 1974

CONDITIONS OF APPROVAL, IF ANY:

**NEW MEXICO OIL CONSERVATION COMMISSION
WELL LOCATION AND ACERAGE DEDICATION PLAT**

All distances must be from the outer boundaries of the Section

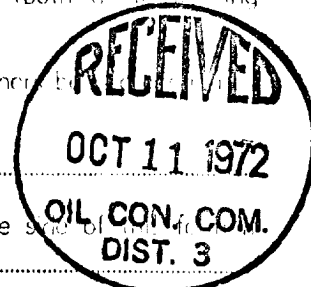
Operator SOUTHERN UNION PRODUCTION COMPANY		Lease XXXXXX LESTER		Well No. 1
Unit Letter H	Section 3	Township 30 NORTH	Range 11 WEST	County SAN JUAN
Actual Footage Location of Well:				
1670 feet from the NORTH line and		1010 feet from the EAST line		
Ground Level Elev. 5749	PICTURED CLIFFS MESAVERDE	AZTEC PICTURED CLIFFS BLANCO MESAVERDE		N/2 - 320.40 - M.V. NE/4 - 160.70 P.C.

1. Outline the acreage dedicated to the subject well by colored pencil or hatchure marks on the plat below.
2. If more than one lease is dedicated to the well, outline each and identify the ownership thereof (both as to working interest and royalty).
3. If more than one lease of different ownership is dedicated to the well, have the interests of all owners consolidated by communitization, unitization, force-pooling, etc?

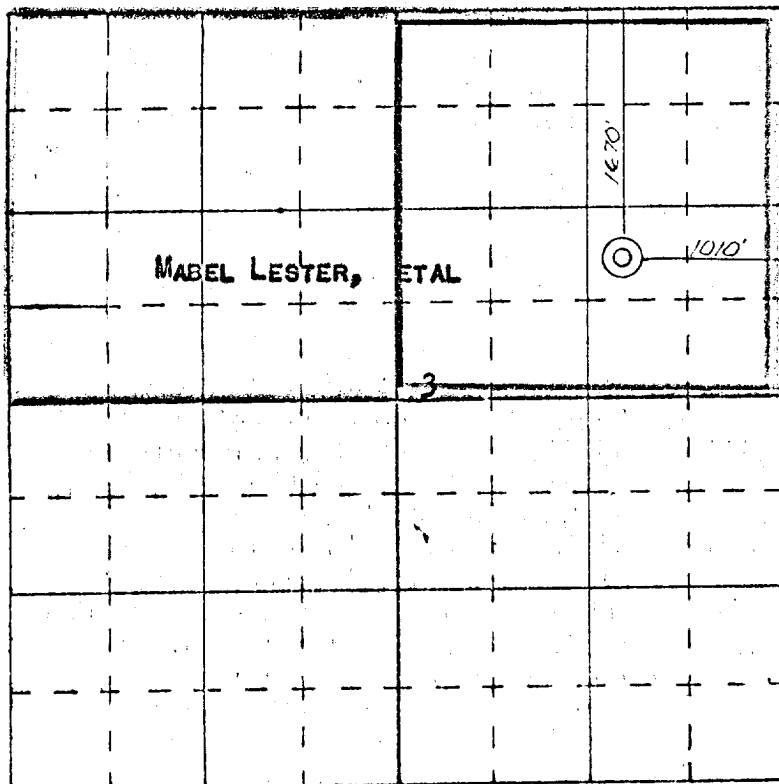
☒ Yes ☐ No If answer is "yes," type of consolidation **COMMUNITIZATION**

If answer is "no," list the owners and tract descriptions which have actually consolidated. (Use reverse side of plat if necessary.)

No allowable will be assigned to the well until all interests have been consolidated (by communitization, unitization, forced-pooling, or otherwise) or until a non standard unit, eliminating such interests, has been approved by the Commission.



—— **PICTURED CLIFFS DEDICATION**
—— **MESAVERDE DEDICATION**



SCALE—4 INCHES EQUALS 1 MILE

SAN JUAN ENGINEERING COMPANY, FARMINGTON, N. M.

CERTIFICATION

I hereby certify that the information contained herein is true and complete to the best of my knowledge and belief.

**ORIGINAL SIGNED BY
B. R. VANDERSLICE**

Name
B. R. VANDERSLICE
Position

AREA SUPERINTENDENT
Company

SOUTHERN UNION PRODUCTION CO.
Date

OCTOBER 10, 1972

I hereby certify that the well location shown on this plat was plotted from field notes of actual surveys made by me or under my supervision, and that the same is true and correct to the best of my knowledge and belief.

Date
October 1972
Signature
James P. Leese
Registered Professional Engineer
and/or Land Surveyor **James P. Leese**

1463
Certificate No.