

30-045-21702

NO. OF COPIES RECEIVED	6
DISTRIBUTION	
SANTA FE	1
FILE	1
U.S.G.S.	2
LAND OFFICE	1
OPERATOR	1

NEW MEXICO OIL CONSERVATION COMMISSION

Form C-101
Revised 1-1-65

5A. Indicate Type of Lease

STATE ☒ FEDERAL ☐

5. State Oil & Gas Lease No.

B-11240-47

E-5113-15; E-5384

APPLICATION FOR PERMIT TO DRILL, DEEPEN, OR PLUG BACK

1a. Type of Work

DRILL ☒DEEPEN ☐PLUG BACK ☐

b. Type of Well

OIL WELL ☐GAS WELL ☒

OTHER

SINGLE ZONE ☒MULTIPLE ZONE ☐

2. Name of Operator

Mesa Petroleum Co.

3. Address of Operator

P. O. Box 2009 Amarillo, Texas 79105

4. Location of Well

UNIT LETTER P LOCATED 990 FEET FROM THE South LINEAND 990 FEET FROM THE East LINE OF SEC. 32 TWP. 31N RGE. 8W NMPM

7. Unit Agreement Name

8. Farm or Lease Name

State Com K

9. Well No.

#7A

10. Field and Pool, or Wildcat

Blanco (Mesaverde)

17. County

San Juan

19. Proposed Depth

5800'

19A. Formation

Mesaverde

20. Rotary or C.T.

Rotary

21. Elevations (Show whether DI, RI, etc.)

21A. Kind & Status Plug. Bond

Blanket

21B. Drilling Contractor

unknown

22. Approx. Date Work will start

As Rig Availability

23.

Dictates

PROPOSED CASING AND CEMENT PROGRAM

SIZE OF HOLE	SIZE OF CASING	WEIGHT PER FOOT	SETTING DEPTH	SACKS OF CEMENT	EST. TOP
13 3/4"	10 3/4"	32.75#	150'	Sufficient to	circ. to surface
8 3/4"	7"	29 #	3400'	Sufficient to	cover OJO Alamo
6 1/8"	4 1/2"	10.5#	3200-5800'	Sufficient to	tie back into 7" csg.

Mesa proposes to drill a Mesaverde infill well at the above location to an approximate depth of 5800'. Electric Logs will be run from surface casing to 7" casing point and from bottom of 7" casing to T.D. Production liner will be set through the pay zone and perforated.

BOP Program: Install 10", series 900 double gate preventer on 10 3/4" casing. B.O.P. will be tested to 500 psi prior to drilling out cement in surface casing and 1000 psi prior to drilling out cement in intermediate casing.

All work will be conducted in accordance with rules and regulations of the State of New Mexico.

APPROVAL VALID
FOR NEW MEXICO
5-15-75

FEB 14 1975

OIL CON. COM.

DIST 2

IN ABOVE SPACE DESCRIBE PROPOSED PROGRAM IF PROPOSAL IS TO DEEPEN OR PLUG BACK, GIVE DATA ON PRESENT PRODUCTIVE ZONE AND PROPOSED NEW PRODUCTIVE ZONE, GIVE BLENDOUT PREVENTER PROGRAM, IF ANY.

I hereby certify that the information above is true and complete to the best of my knowledge and belief.

Signed R. J. Flaker Title Production Engr. Date 2/12/75

(This space for State Use)

RECEIVED NEW MEXICO OIL CON. COM. NO. 3

FEB 14 1974

APPROVED BY AK TITLE 7-State DATE 1-2-75

CONDITIONS OF APPROVAL, IF ANY

**NEW MEXICO OIL CONSERVATION COMMISSION
WELL LOCATION AND ACREAGE DEDICATION PLAT**

Form C-102
Supersedes C-128
Effective 1-1-65

All distances must be from the outer boundaries of the Section.

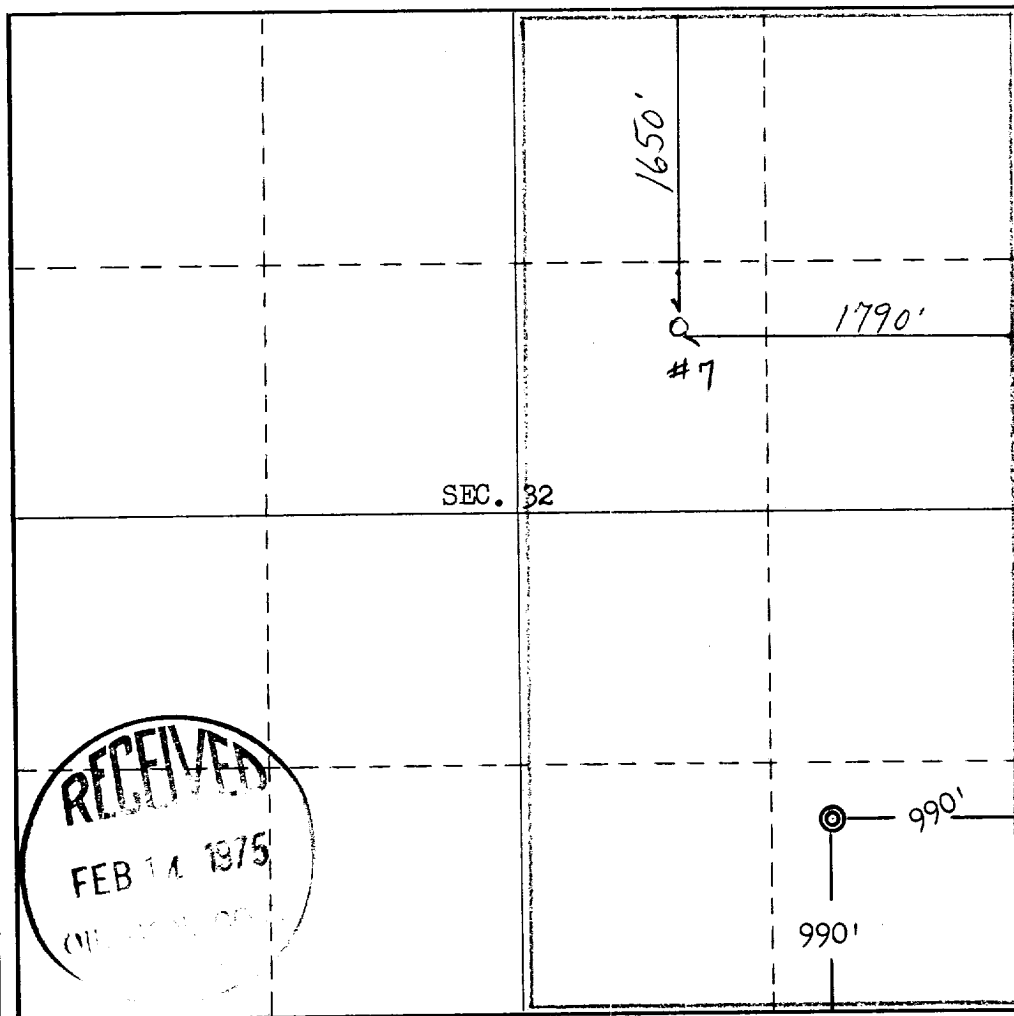
Operator Mesa Petroleum Company			Lease State Com K		Well No. 7A
Unit Letter P	Section 32	Township 31 North	Range 8 West	County San Juan	
Actual Footage Location of Well: 990 feet from the South line and 990 feet from the East line					
Ground Level Elev. 6315	Producing Formation Mesaverde		Pool Blanco		Dedicated Acreage: 320 Acres

1. Outline the acreage dedicated to the subject well by colored pencil or hachure marks on the plat below.
2. If more than one lease is dedicated to the well, outline each and identify the ownership thereof (both as to working interest and royalty).
3. If more than one lease of different ownership is dedicated to the well, have the interests of all owners been consolidated by communitization, unitization, force-pooling, etc?

☐ Yes ☐ No If answer is "yes," type of consolidation _____

If answer is "no," list the owners and tract descriptions which have actually been consolidated. (Use reverse side of this form if necessary.) _____

No allowable will be assigned to the well until all interests have been consolidated (by communitization, unitization, forced-pooling, or otherwise) or until a non-standard unit, eliminating such interests, has been approved by the Commission.



CERTIFICATION

I hereby certify that the information contained herein is true and complete to the best of my knowledge and belief.

R. J. Flaker

Name

R. J. Flaker

Position

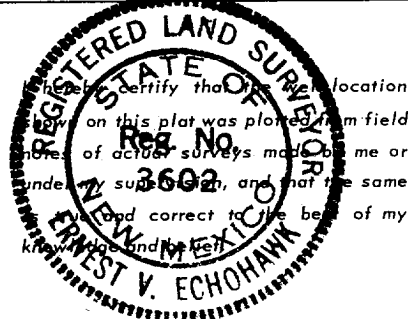
Production Engr.

Company

Mesa Petroleum Co.

Date

2/12/75



Date Surveyed

January 29, 1975

Registered Professional Engineer and/or Land Surveyor

E. V. Echohawk

Certificate No. **3602**

E. V. Echohawk LS

XC 2/12/75 EPNG