

UNITED STATES  
DEPARTMENT OF THE INTERIOR  
GEOLOGICAL SURVEY

30-045-21786

5. LEASE DESIGNATION AND SERIAL NO.

SF-078385

6. IF INDIAN, ALLOTTEE OR TRIBE NAME

7. UNIT AGREEMENT NAME

8. FARM OR LEASE NAME

Florance

9. WELL NO.

29A

10. FIELD AND POOL, OR WILDCAT

Blanco Mesa Verde

11. SEC., T., R., M., OR BLK.  
AND SURVEY OR AREA

Sec. 25, T30N, R8W

12. COUNTY OR PARISH 13. STATE

San Juan

New Mexico

## APPLICATION FOR PERMIT TO DRILL, DEEPEN, OR PLUG BACK

1a. TYPE OF WORK

DRILL ☒DEEPEN ☐PLUG BACK ☐

b. TYPE OF WELL

OIL  
WELL ☐GAS  
WELL ☒

OTHER

SINGLE  
ZONE ☐MULTIPLE  
ZONE ☐

2. NAME OF OPERATOR

TENNECO OIL COMPANY

3. ADDRESS OF OPERATOR

1860 Lincoln Street, Denver, Colorado 80203

4. LOCATION OF WELL (Report location clearly and in accordance with any State requirements.)\*

At surface

1770' FNL &amp; 1795' FWL

At proposed prod. zone

14. DISTANCE IN MILES AND DIRECTION FROM NEAREST TOWN OR POST OFFICE\*

15. DISTANCE FROM PROPOSED\*

LOCATION TO NEAREST

PROPERTY OR LEASE LINE, FT.

(Also to nearest drlg. unit line, if any)

1770'

16. NO. OF ACRES IN LEASE

1,280

17. NO. OF ACRES ASSIGNED

TO THIS WELL

320

18. DISTANCE FROM PROPOSED LOCATION\*

TO NEAREST WELL, DRILLING, COMPLETED,  
OR APPLIED FOR, ON THIS LEASE, FT.

19. PROPOSED DEPTH

5580'

20. ROTARY OR CABLE TOOLS

Rotary

21. ELEVATIONS (Show whether DF, RT, GR, etc.)

6263' GL

22. APPROX. DATE WORK WILL START\*

May 20, 1975

23.

## PROPOSED CASING AND CEMENTING PROGRAM

SIZE OF HOLE	SIZE OF CASING	WEIGHT PER FOOT	SETTING DEPTH	QUANTITY OF CEMENT
12 1/4"	9 5/8"	36#	200'	Sufficient to circulate
8 3/4"	7"	20#	3450'	Cement back to surface casing

The proposed drilling program for this well is as follows:

Drill 12 1/4" hole + 200 and set 9 5/8" surface csg, circ cement to surface.

Drill 8 3/4" hole + 3450 and set 7" csg, circ cement to surface.

Drill 6 1/8" hole to TD using gas as the drilling fluid. Log the hole and hang a 4 1/2" liner from + 3000 to TD and cement over the Mesa Verde interval.

BOP equipment is listed as points No 4 &amp; No 5 in the attached 7 point program.

The well will be completed through casing perforations in the Mesa Verde formation and stimulated as necessary to establish commercial gas production.

RECEIVED

MAY 5 1975

U. S. GEOLOGICAL SURVEY  
BIRMINGHAM, N. M.

IN ABOVE SPACE DESCRIBE PROPOSED PROGRAM: If proposal is to deepen or plug back, give data on present productive zone and proposed new productive zone. If proposal is to drill or deepen directionally, give pertinent data on subsurface locations and measured and true vertical depths. Give blowout preventer program, if any.

24.

SIGNED

Linda Sugar

TITLE

Production Clerk

DATE

May 2, 1975

(This space for Federal or State office use)

PERMIT NO.

APPROVAL DATE

APPROVED BY

Gru

TITLE

CONDITIONS OF APPROVAL, IF ANY:

\*See Instructions On Reverse Side

RECEIVED  
MAY 5 1975  
OIL CON. COM.  
INST. 3

NEW MEXICO OIL CONSERVATION COMMISSION  
WELL LOCATION AND ACREAGE DEDICATION PLAT

Form C-102  
Supersedes C-128  
Effective 1-1-65

All distances must be from the outer boundaries of the Section.

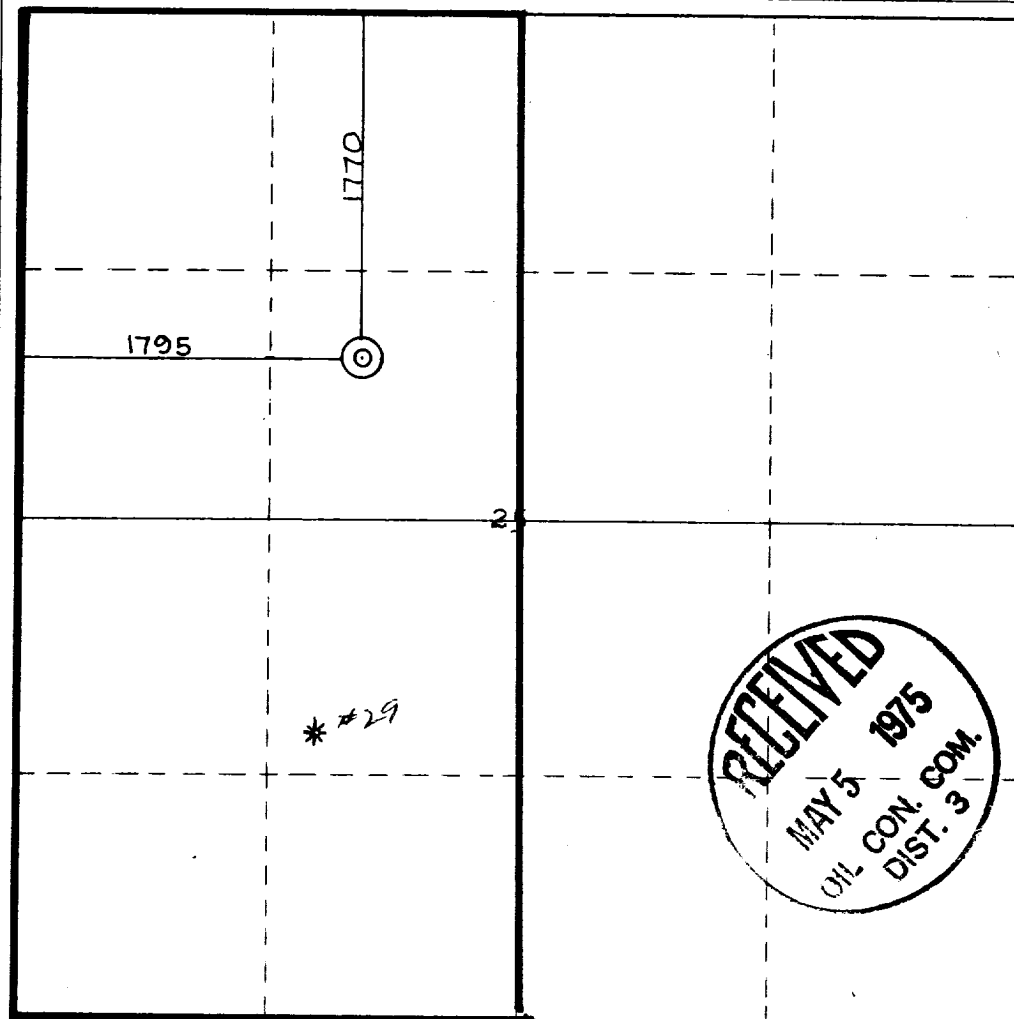
Operator <b>TENNECO OIL COMPANY</b>			Lease <b>FLORANCE</b>		Well No. <b>29A</b>
Map Letter <b>F</b>	Section <b>25</b>	Township <b>30N</b>	Range <b>8W,</b>	County <b>SAN JUAN</b>	
Actual Section Location of Well: <b>1770</b> feet from the <b>North</b> line and <b>1795</b> feet from the <b>West</b> line					
Ground Level Elev. <b>6263</b>	Producing Formation <b>Mesa Verde</b>		Pool <b>Blanco Mesa Verde</b>	Dedicated Acreage: <b>320</b> Acres	

1. Outline the acreage dedicated to the subject well by colored pencil or hachure marks on the plat below.
2. If more than one lease is dedicated to the well, outline each and identify the ownership thereof (both as to working interest and royalty).
3. If more than one lease of different ownership is dedicated to the well, have the interests of all owners been consolidated by communitization, unitization, force-pooling, etc?

☐ Yes ☐ No If answer is "yes," type of consolidation \_\_\_\_\_

If answer is "no," list the owners and tract descriptions which have actually been consolidated. (Use reverse side of this form if necessary.) \_\_\_\_\_

No allowable will be assigned to the well until all interests have been consolidated (by communitization, unitization, forced-pooling, or otherwise) or until a non-standard unit, eliminating such interests, has been approved by the Commission.



CERTIFICATION

I hereby certify that the information contained herein is true and complete to the best of my knowledge and belief.

Name  
*Linda Magree*  
Position  
*Production Clerk*  
Company  
*Tenneco Oil Co.*  
Date  
*May 2, 1975*

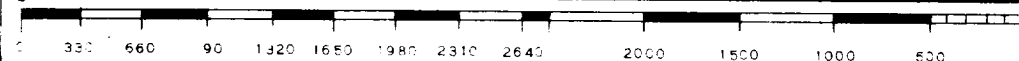
I hereby certify that the well location shown on this plat was plotted from field notes of actual surveys made by me or under my supervision, and that the same is true and correct to the best of my knowledge and belief.

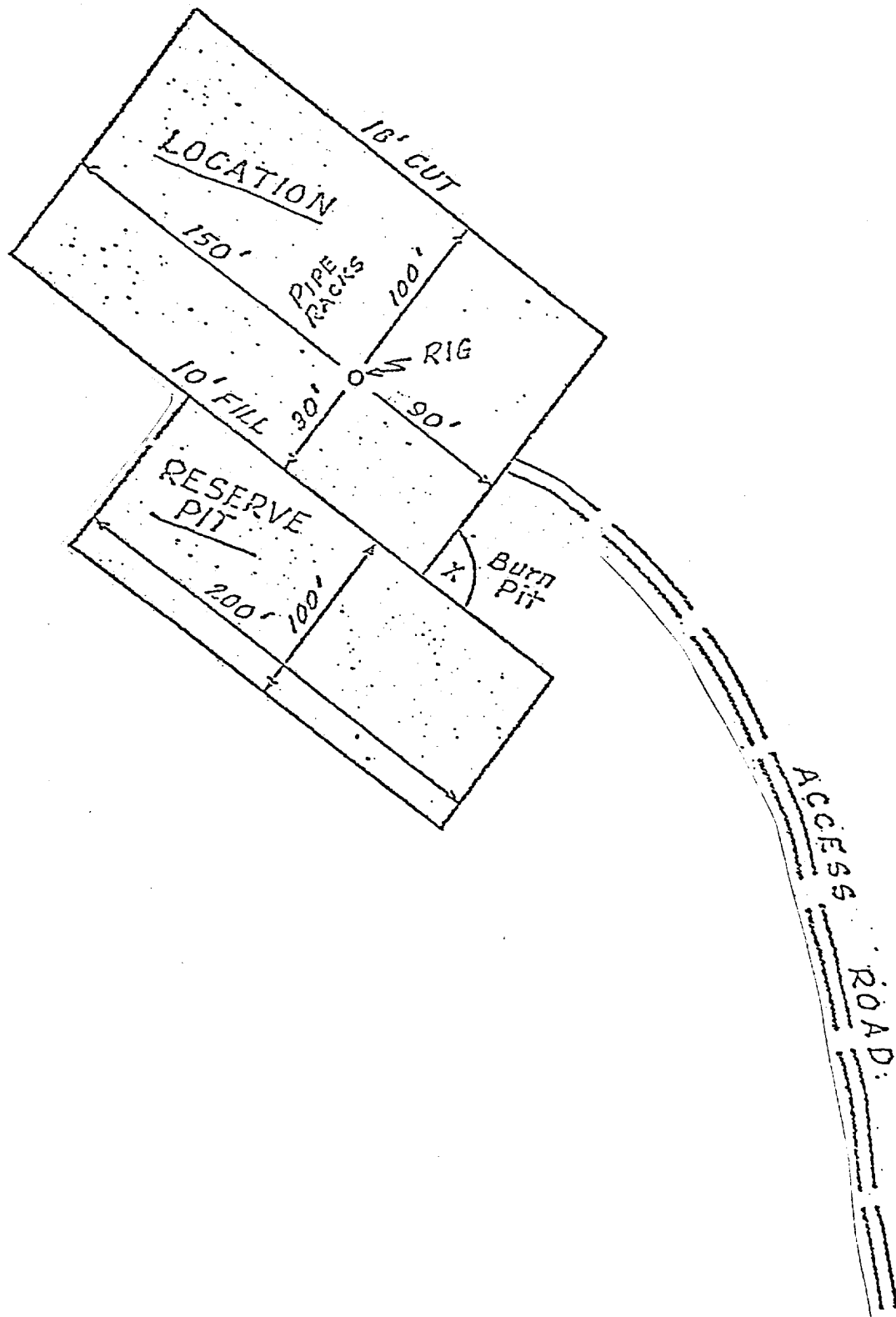
17 April, 1975

Date Surveyed  
**JAMES P. LNESE**  
Registered Professional Engineer  
and/or Land Surveyor

*James P. Lnese*  
1463

Certificate No.





SURFACE USE PLAN

1. Shown on attached map.
2. Shown on attached map. Approximately 200' of 16' wide road will be required.
3. Shown on attached map.
4. Shown on attached map.
5. This is expected to be a dry gas well, therefore, a tank battery will not be required.
6. Water will be hauled from the San Juan River or nearest wash.
7. All waste material will be buried in reserve pit at time of location clean up.
8. No camps will be associated with this operation.
9. No airstrip will be built for this operation.
10. Shown on attached diagram.
11. Upon completion or abandonment of this well, the location will be cleaned and levelled and a dry hole marker placed, if applicable.
12. The location is sandy, rocky, typical for the area. Vegetation is sage brush, scrub oak and scrub cedar.

7 POINT WELL CONTROL PLAN

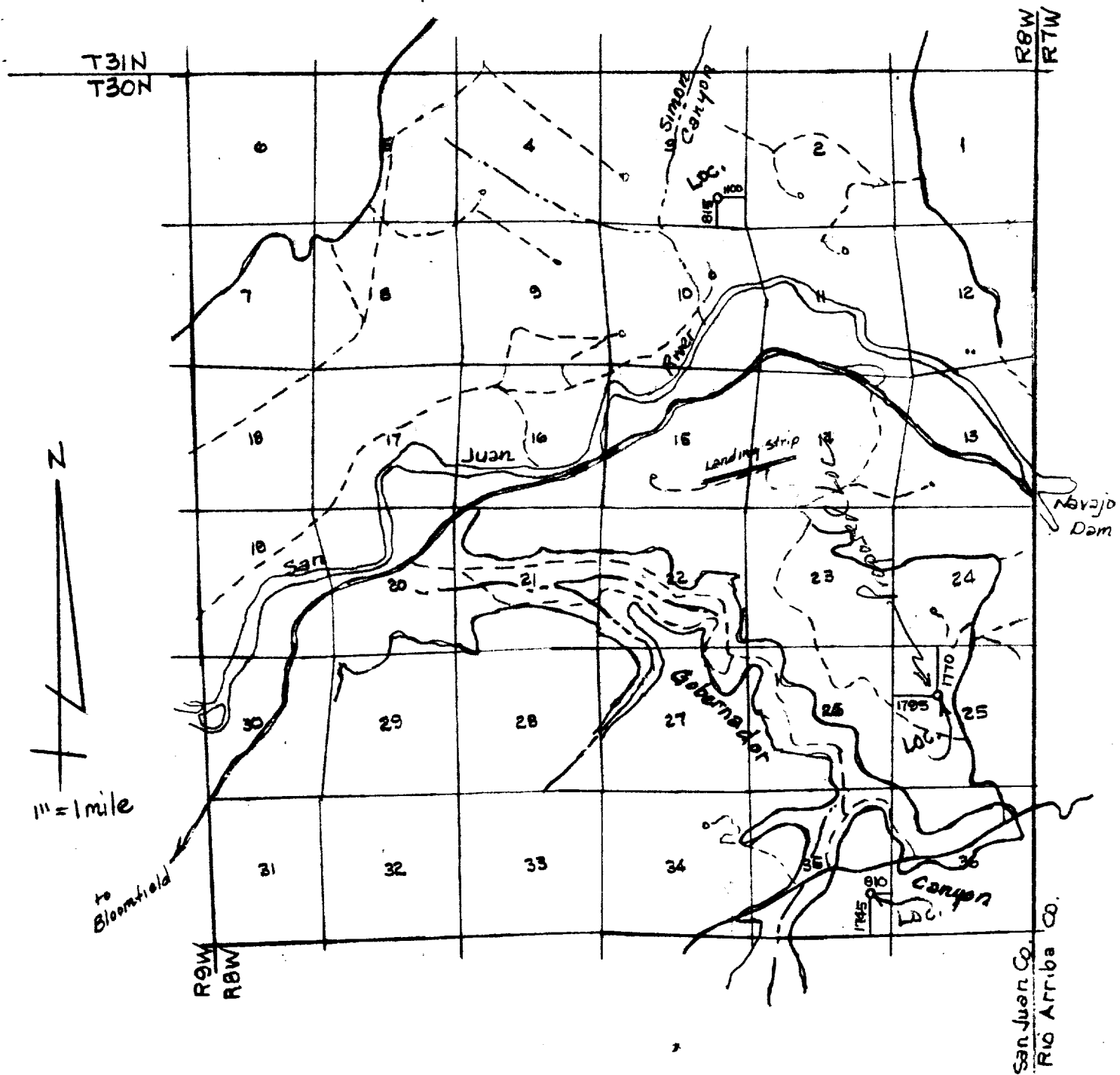
1. Surface casing: 9 5/8", 24#, approximately 200, grade K-55, new condition.
2. Casinghead will be 10", 900 Series, 3,000 psi rating.
3. Intermediate casing - 7", 20#, K-55, will be set at  $\pm$  3300, and cemented to surface casing.
4. Blowout preventors: Hydraulic, double ram, 10". One set of rams will be provided for each size drill pipe in the hole. One set of blind rams at all times. Fill line will be 2", kill line will be 2", choke relief line will be 2" with variable choke.
5. Auxiliary equipment:
  - (1) Kelly cock will be in use at all times.
  - (2) Stabbing valve to fit drill pipe will be present on floor at all times.
  - (3) Mud monitoring will be visual, no abnormal pressures are anticipated in this area.
  - (4) Rotating head will be used when drilling with gas.
6. Anticipated bottom-hole pressure:

This is an area of known pressures. Maximum anticipated pressure at 5700' T.D. is 1000 psi.
7. Drilling Fluids:

0 -200 Spud mud

200-3300 Gel water - low solids as needed to maintain good hole conditions

3300-T.D.Compressed gas



Vicinity map for  
 Tenneco Oil Company  
 Wells located in the SE/SE  
 of Sec. 3; SE/NW of Sec. 25;  
 NE/SE of Sec 35; T30N, R8W,  
 N.M.P.M., San Juan Co., N.Mex  
 Scale 1"=1mile Date 4-12-75

San Juan Engineering Co.

TENNECO OIL COMPANY

PROGNOSIS TO DRILL AND COMPLETE

DIVISION Rocky Mountain Division

DATE: April 25, 1975

LEASE: Florence

WELL NO.: 29-A

LOCATION: 1770' FNL & 1795' FNL  
S 25, T 30 N, R 8 W

FIELD: Blanco Mesa Verde

San Juan County, New Mexico

ESTIMATED ELEVATION: 6263' GL

ESTIMATED TOTAL DEPTH: 5580'

PROJECTED HORIZON: Blanco Mesa Verde

DRILLING, CASING AND CEMENT PROGRAM:

1. MIRURT, Drill 12 $\frac{1}{4}$ " hole to + 200'.
2. Set and cement 9 5/8" casing to T.D. and cement with sufficient cement to circ.
3. DO with 8 3/4" bit to 3450 feet.
4. Run 7" casing and cement back to surface casing.
5. DO of 7" using gas as the circulating fluid, do not drill more than 10' below 7" casing shoe until the hole has dried up completely and is dusting.
6. Drill the hole to T.D., log the hole dry as requested by drillsite geologist.
7. Run 4 $\frac{1}{2}$ " liner to T.D., load hole with mud and cement liner back to 7". Set liner hanger and POH w/drill pipe.
8. Estimated Tops:

Kirtland 2225  
Fruitland 2850

Pictured Cliffs 3140  
Green Horn Shale 4580

Cliff House 4865  
Point Lookout 5345

0 - 200 Feet spud mud

200 - + 3300 Gel chemical - low solids as needed to maintain good hole conditions.

CORING AND TESTING PROGRAM:

None

DEVIATION SURVEYS:

1. Survey surface hole at 100' intervals. Maximum allowable deviation at 200 is  $1/2^{\circ}$ .
2. FROM SURFACE TO TOTAL DEPTH DEVIATION SURVEYS MUST BE TAKEN EVERY 500' OR EACH TRIP WHICHEVER IS FIRST. This may entail running the TOTCO on wireline. Record each survey on the A.A.O.D.C. Drilling Report sheet. Maximum allowable change in deviation is  $1^{\circ}$  per 100'.

SAMPLES:

200 - 3450 30' samples

3450 to T.D. 10' samples

WELL SURVEYS:

GR - Induction

GR - FDC

B.O.P.:

PREVENTORS MUST BE CHECKED FOR OPERATION EVERY 24 HOURS, AND THE CHECK MUST BE RECORDED ON THE A.A.O.D.C. DRILLING REPORT SHEET.



REPORTS:

1. A 6:00 A.M. drilling report including depth, formation, time distribution, mud properties, bit record, weight on bit, rotary speed, pump pressure, daily and cumulative water used, daily and cumulative mud cost and other pertinent information to be called in to Tenneco Oil Company, Denver, Colorado

Call the following numbers:

255-1995 - Report Box - automatic answering receiver that will take calls anytime day or night.

292-9920 - Phyllis Matera - 7:45 A.M. to 8:30 A.M. Monday morning report to include separate reports for Saturday, Sunday and Monday.

2. The yellow sheet of the A.A.O.D.C. report filled out completely, the original copy of the drilling time recorder, copies of water tickets and copies of any other invoices signed and received for Tenneco Oil Company will be mailed daily to:

Tenneco Oil Company  
Suite 1200 - Lincoln Tower Building  
Denver, Colorado 80203

3. In cases of emergencies, call the following:

D. E. Brown (303) 771-8297

**Tenneco Oil**  
A Tenneco Company

Suite 1200  
Lincoln Tower Building  
Denver, Colorado 80203  
(303) 292-9920



July 10, 1975

U. S. Geological Survey  
P.O. Box 959  
Farmington, New Mexico 87401



RE: Florance # 29 A  
Sec. 25, T 30N, R 8W  
San Juan County, New Mexico

Gentlemen:

Due to an archeological request, we are changing the Florance # 29 A well site from 1770' FNL and 1795' FWL to 1850' FNL and 1850' FWL. This is located in Section 25, Township 30N, Range 8W, in the county of San Juan, New Mexico.

Enclosed are five copies each of the amended Permit to Drill, Vicinity Map, and the Surveyor's Plat. The Location Access Map, 12-Point Surface Use Plan, and Prognosis to Drill from our May 2, 1975 letter will still be applicable.

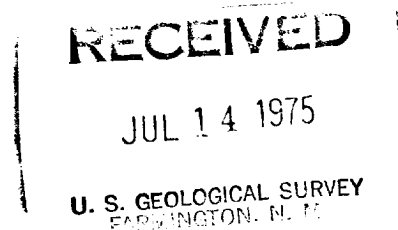
Yours truly,

TENNECO OIL COMPANY

D. D. Myers  
Division Production Manager

TFD:pm

Enclosures



COPY